

**LAS VIRGENES MUNICIPAL WATER DISTRICT
SCADA Communications Upgrade Phase 1**

Notice to Planholders

ADDENDUM NO. 1

October 8, 2014

To: All Planholders of Record

Notice is hereby given to prospective bidders that the Plans and Specifications for the SCADA Communications Upgrade Phase 1 Project have been modified as hereinafter set forth. This Addendum No. 1 shall form a part of the Contract Documents and take precedence over the original Contract Documents.

Bidder shall acknowledge receipt of this Addendum No. 1 in the space below and by completing the acknowledgement on page 1 of the proposal. This page shall be attached to the proposal.

By:  _____
Eric Schlageter, P.E. Associate Engineer

ACKNOWLEDGEMENT TO BE INCLUDED WITH SEALED PROPOSAL:

I have read six pages for Addendum No. 1 including (pages 1-4, plan sheet 1422-4.1 and 1422-4.2) attached hereto.

Signed: _____

Date: _____

The following clarifications, revisions, replacements, additions, and/or deletions shall be made a part of the above-referenced contract documents.

Revisions

1. Replace Proxim Radio Model Numbers as follows:

Old

- Tsunami QB-8200 Link, 300 Mbps, MIMO 3x3, Type-N Connectors (Two QB-8200-EPA-US)
- Tsunami QB 8250 Link, 300 Mbps, MIMO 2x2, 23 dBi panel antenna (Two QB-8250-EPR-US)

New

- Tsunami QB-8200-G Link, 300 Mbps, MIMO 3x3, GPS Sync ready, Type-N Connectors - US PoE (Two **QB-8200-EPA-G-US**)
- Tsunami QB-8250-G Link, 300 Mbps, MIMO 2x2, GPS Sync ready, 23 dBi panel antenna - US PoE (Two **QB-8250-EPR-G-US**)

2. Correction to part number in list of parts shown on drawings:

Battery Quick Disconnects

Old - MCMaster-CARR 7043K21, BLACK, 10 AWG

New - MCMaster-CARR **7043K1**, BLACK, 10 AWG

UPS Battery, 12 VDC Sealed Lead Acid

Old - POWER SONIC PS12550

New - POWER SONIC **PS12550B** – battery terminal T6 with threaded insert

Ground Terminal

Old – AB 1492-WG4

New – AB 1492-**JG3** (Calleguas East Portal – Qty 4, Reservoir 1 – Qty 4)

3. Westlake Drawing 1422-4.1

Antenna mast details, Ethernet panel and Panel Parts List shown on Drawing 1422-4.1 are not correct and should be removed from Drawing 1422-4.1. The details and parts are shown correctly on Drawing 1422-4.2. Please refer to revised sheet 1422-4.1 along with 1422-4.2 (attached)

4. Small enclosures for Ethernet and Radios are correctly shown as stainless steel panels in the Panel Parts List. Larger enclosures for batteries, power panels and control panels are not intended to be stainless steel enclosures, see Section 17001 Control Enclosures.

5. The spare parts list under bid item number 24 was not included. The spare parts list for bid item 24 as a lump sum item shall include the following:

SPARE PARTS LIST			
ITEM	QTY.	DESCRIPTION	MANUFACTURER
A	1	ETHERNET ROUTER	CISCO IE-3000-8TC-E
B	1	SERIAL ETHERNET BRIDGE, INDUSTRIAL PROTOCOL	LANTRONIX XPRESS-DR-IAP
C	1	PROGRAMMABLE LOGIC CONTROLLER, CPU	MODICON 171 CBU 980 90
D	2	ETHERNET 24/48V POE	TYCON TP-DCDC-1248M
E	2	POE DIN ADAPTER	TYCON DIN RAIL ADAPTER KIT
F	2	ETHERNET POE SURGE PROTECTOR	CITEL MJ8-POE-B
G	1	BATTERY CHARGER, 20A	XANTREX TRUECHARGE2 TC2012
H	1	DC/DC CONVERTER, 12/24 VDC	ANALYTIC SYSTEMS VTC605-12-24
I	1	120 VAC TO 24 VDC POWER SUPPLY, 10A	PHOENIX QUINT-PS 2938604
J	1	DIODE MODULE	PHOENIX DIODE-40 2938963
K	1	SOLAR CHARGE CONTROLLER	MORNINGSTAR TRISTAR TS-MPPT-60
L	1	BATTERY REMOTE TEMP SENSOR	MORNINGSTAR RTS
M	1	2 FOOT MICROWAVE DISH	MWAVE RPD2-54-N, DUAL POLARIZATION
N	1	2 FOOT MICROWAVE DISH RADOME	MWAVE DSD2, RADOME
O	4	6 FOOT COAX JUMPERS	TIMES LMR600, N MALE TO N MALE
P	3	THREAD ADAPTER, 1/2" NPT to M25	A-NPTM-1225-BR, NICKEL PLATED BRASS
Q	1	ETHERNET RADIO, 900 Mhz, SS WITH DIN MOUNT	MDS INET II ACCESS POINT, INETII-AP-D-N GE ORDER CODE INETII-MD9A1AVFCD1NN0
R	2	COAX JUMPER CABLE, 1 FT	LMR240, TNC RT ANGLE MALE TO N MALE, 1 FT
S	2	COAX JUMPER CABLE, 3 FT	LMR240, TNC RT ANGLE MALE TO N MALE, 3 FT
T	3	COAX JUMPER CABLE, 30 FT	LMR400, TNC MALE TO N MALE, 30 FT
U	3	SURGE PROTECTOR	POLYPHASER, DSXL
V	3	YAGI ANTENNA	SCALA TY900
W	3	TILT KIT	SCALA TY900 TILT KIT

Clarifications / Response to Questions

1. Question: The Title sheet and Radio detail drawings 1422-1.0, 1422-1.1 & 1422-1.2 are labeled '0 of 6', '1 of 6' and '2 of 6'. No additional sheets are listed on the title page. Are there missing sheets or is the '6' a typo and '3' is the correct total??

Answer: Drawings sheets 1422-1.3 to 1422-1.6 contain IP address information and this information is not required by the bidders and the information on those sheets will not be made public.

2. Question: Some of the part numbers indicated for miscellaneous items for panels, such as DIN rail, wire duct, etc. do not appear to match current part numbers. Are there any special requirements for these items or can standard generic materials that match the description be used for these

Answer: Part numbers for miscellaneous items for panels, such as DIN rail, wire duct maybe no longer be valid however every attempt should be made to offer items of the same quality and by the same manufacture if possible and such substitutions will be subject to acceptance in the submittal review process. Some parts numbers are being corrected or updated in this addendum.

3. Question: Specification Section 01011- 1.1-14 (page 4) describes magnetic mounts for Calabasas tank however; drawings do not indicate magnetic mounts for this site. Are any magnetic mounts or related engineering required for this site?

Answer: The antenna mast will be mounted to the existing hand rail as shown on sheet 1422-15.3 and a magnetic mount tripod will not be required. Calabasas Tank is being rehabilitated and the contractor doing the work will be providing mounting studs as shown on sheet 1422-15.3. The studs being installed are intended to provide for mounting of conduit and solar panels.

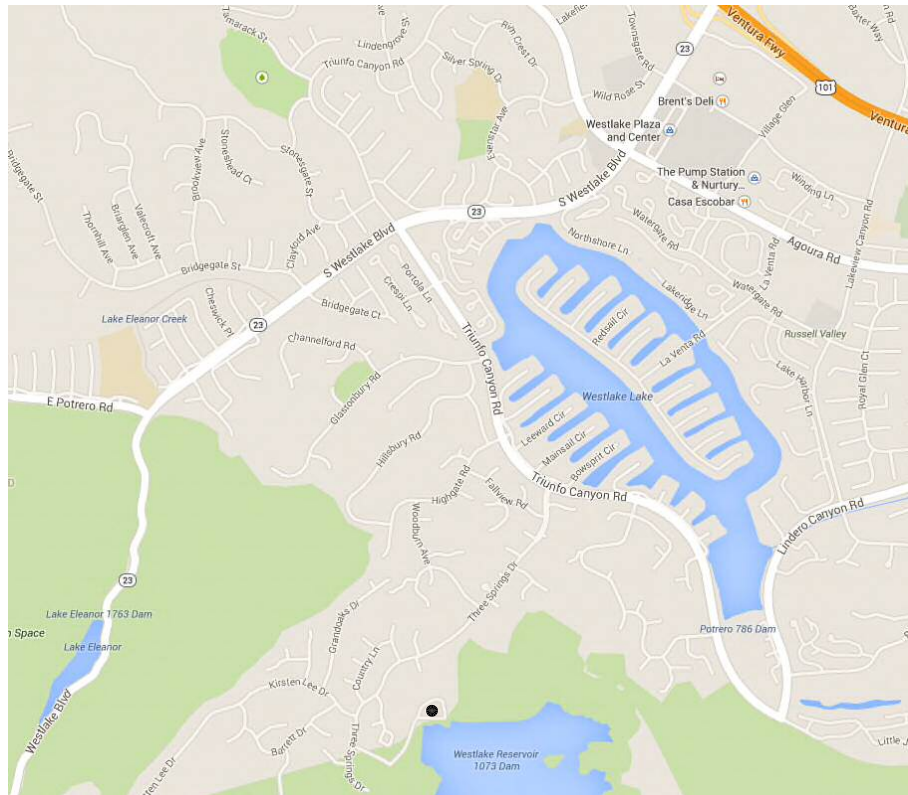
4. Question: Warner Tanks' – antenna – north mast – detail shows a 3 ft. dish however the BOM shows 2 ft dish. Which is required for this site?

Answer: The dish antenna listed in the Backhaul Radio Parts List shown on sheet 1422-9.4, Warner Tank North Antenna Mast is shown as a 2 foot dish, that is incorrect it should be a 3ft dish as shown on the North Antenna Mast Layout details.

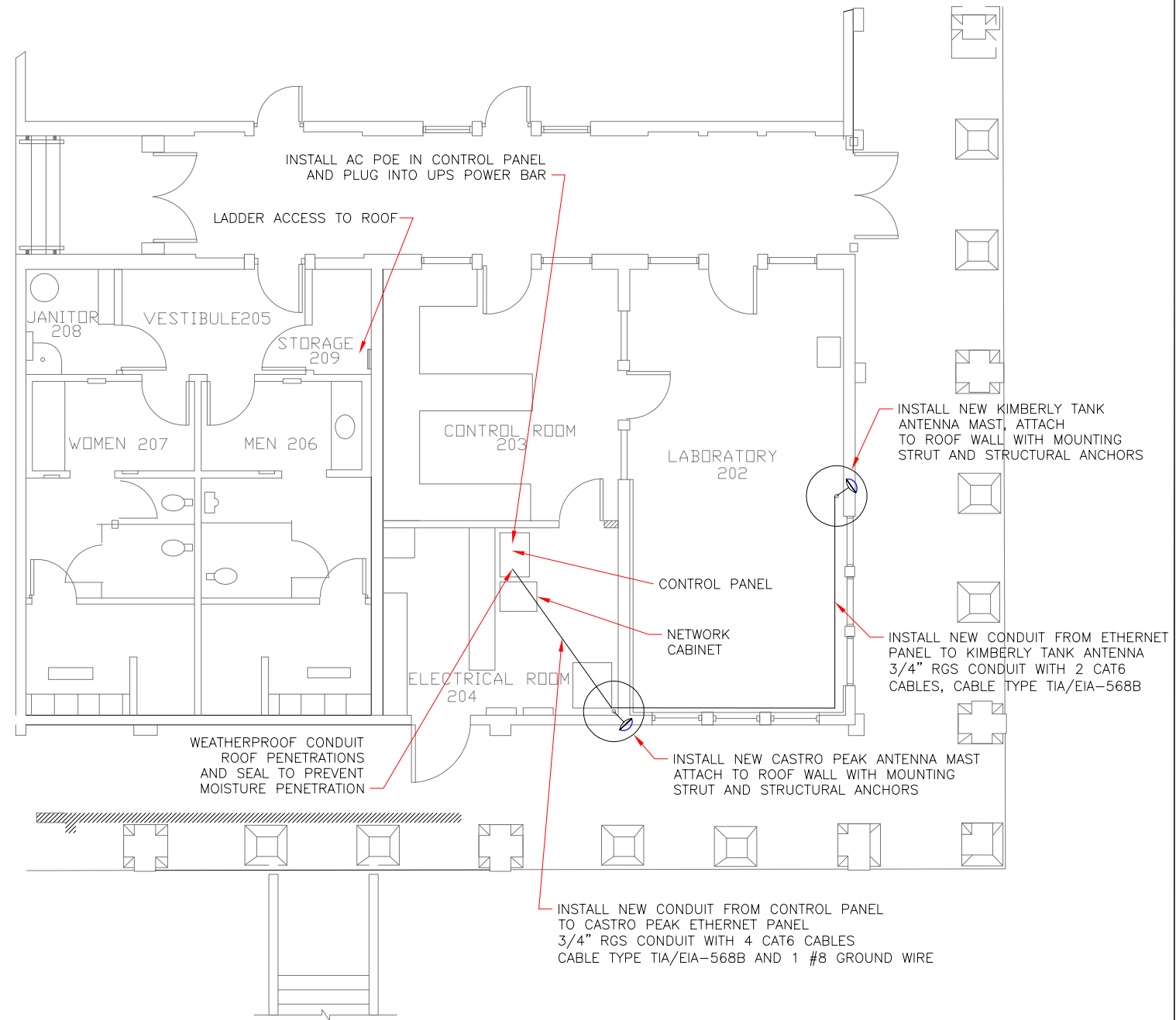
5. Question: Section 17001 indicates wall mounted enclosures shall be Nema 4X SS. Can Nema 4 enclosures be utilized, in lieu of Nema 4X, for the wall mount cabinets where drawing bill of materials/part numbers indicate a Standard Nema 4 enclosure.

Answer: NEMA 4 enclosures shall be used unless otherwise specified in the material parts list as stainless steel.

END OF ADDENDUM #1

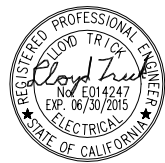


32501 TORCHWOOD PLACE
WESTLAKE VILLAGE, CA SITE LOCATION



WESTLAKE FILTRATION FACILITY PLAN VIEW

116-081.dwg
MSD 03/17/2005

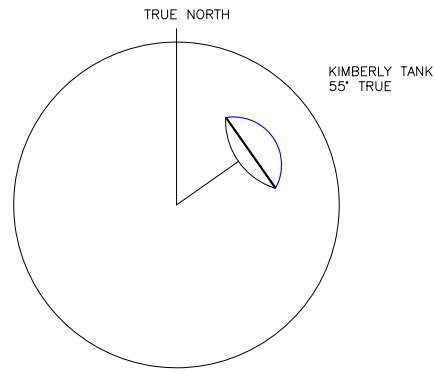


17526 Von Karman, Suite B
Irvine, CA 92614 PH. (949) 250-8668
2985 East Hillcrest Drive, Suite 101
Thousand Oaks, CA 91362 PH. (805) 379-8668

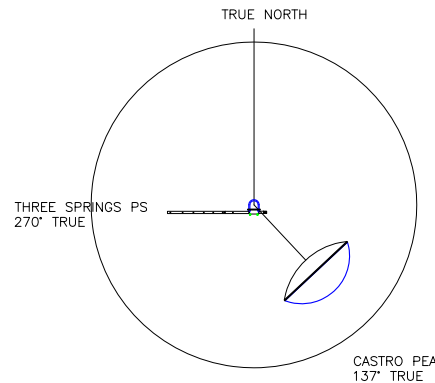
LAS VIRGENES MUNICIPAL WATER DISTRICT
SCADA NETWORK UPGRADE
WESTLAKE FILTRATION FACILITY
COMMUNICATIONS MODIFICATIONS

ISSUE No.	ISSUE DATE	DRWN BY	DES'D BY	CHK'D BY	ISSUED FOR
1	09/2014	LFT	LFT		BID

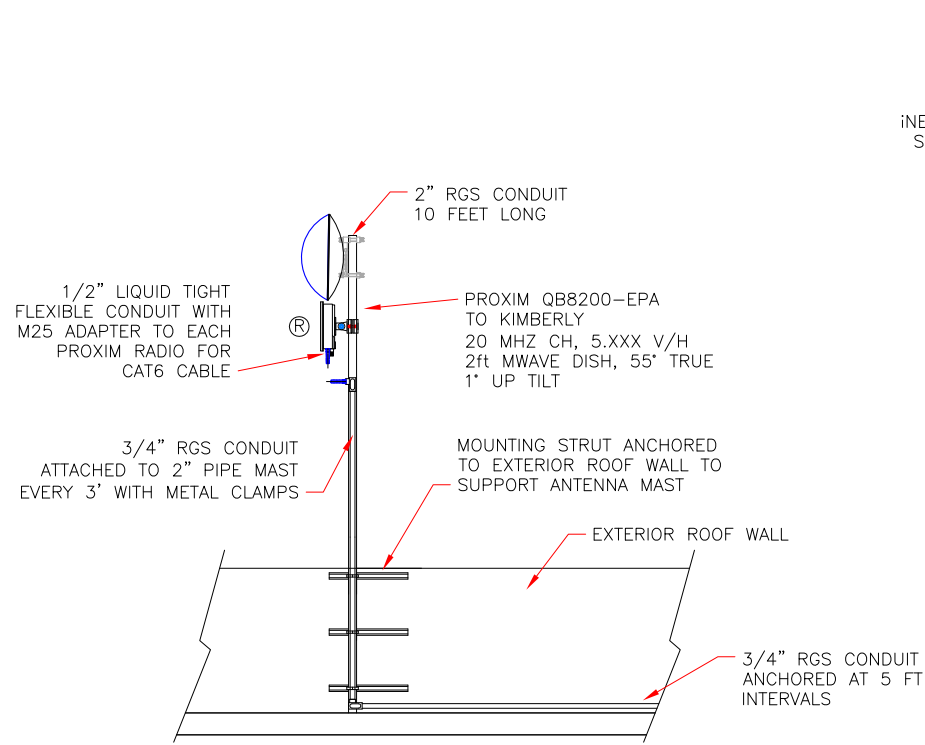
SHEET 1 OF 1
DRAWING No. 1422-4.1
JOB No. 1422
SCALE: NONE
UNLESS NOTED OTHERWISE
BY A SPECIFIC DETAIL



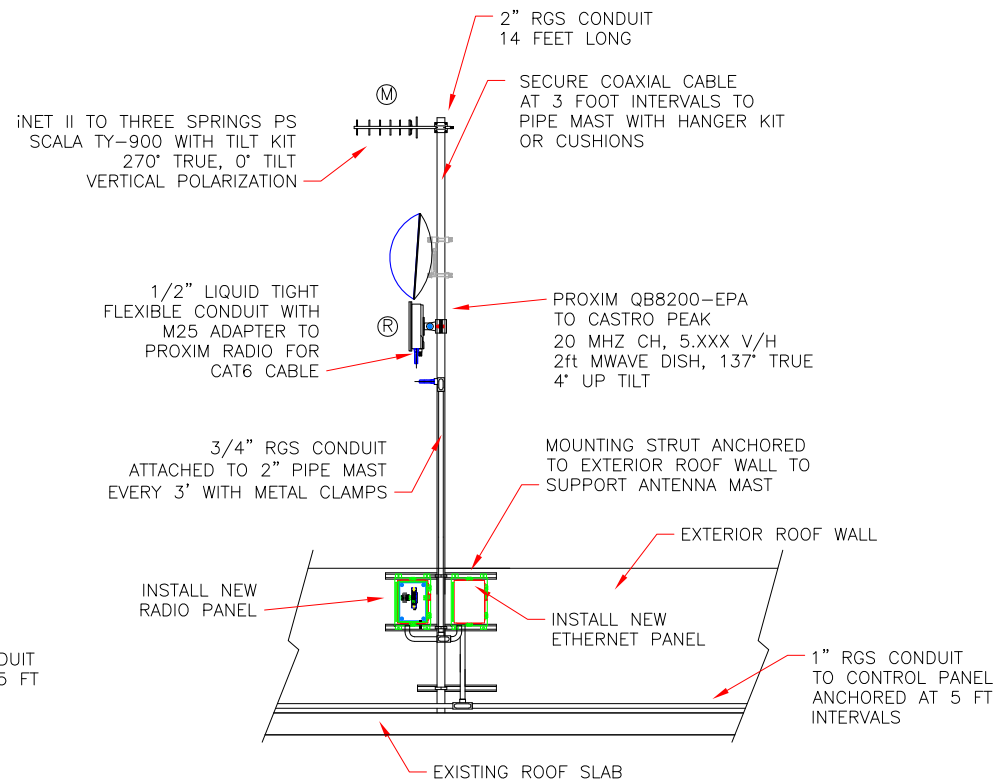
KIMBERLY ANTENNA DIRECTION DETAILS



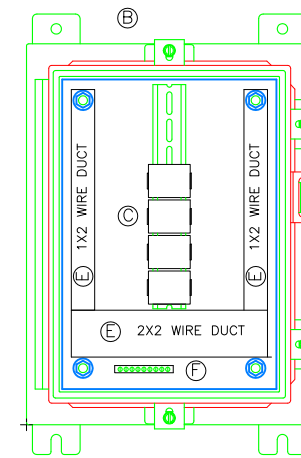
CASTRO ANTENNA DIRECTION DETAILS



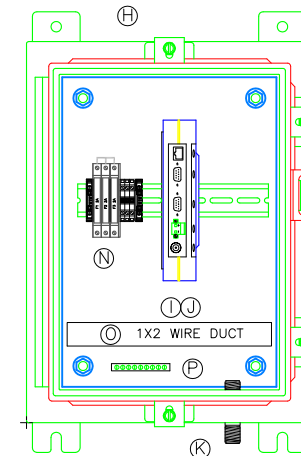
KIMBERLY ANTENNA MOUNTING MAST DETAILS



CASTRO ANTENNA MOUNTING MAST DETAILS



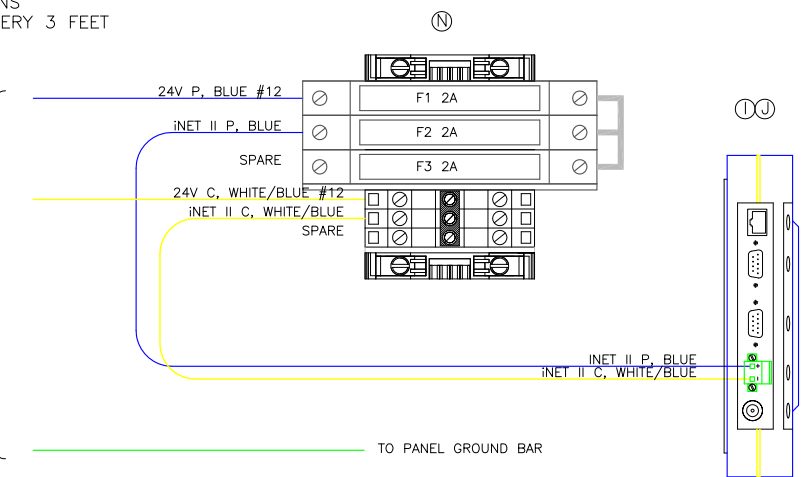
ETHERNET PANEL LAYOUT



RADIO PANEL LAYOUT

INSTALL WATERPROOF KIT AT ALL EXTERNAL COAX CONNECTIONS PROVIDE COAX SUPPORT EVERY 3 FEET

FROM EXISTING CONTROL PANEL



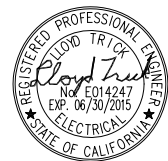
RADIO PANEL WIRING DETAILS

WESTLAKE COMMUNICATION PANEL PARTS LIST			
ITEM	QTY.	DESCRIPTION	MANUFACTURER
A	2	ETHERNET AC POE POWER SUPPLY	COMES WITH PROXIM RADIO
	2	CAT6 ETHERNET JUMPER, 15 FT	TRIPPLITE N201-015-BL

ETHERNET PANEL PARTS LIST			
ITEM	QTY.	DESCRIPTION	MANUFACTURER
B	1	NEMA 4 16x12x8 ENCLOSURE	HOFFMAN A-16H1208SSLP
C	1	ENCLOSURE BACK PLATE	HOFFMAN A-16P12
D	4	ETHERNET POE SURGE PROTECTOR	CITEL M-J8-POE-B
E	1	DIN RAIL	WEIDMULLER EGU4/24
	1	WIREWAY 1"x2"x6" WHITE	PANDUIT 1X2WH6N
	1	WIREWAY COVER 1"x6" WHITE	PANDUIT C1WH6N
	1	WIREWAY 2"x2"x6" WHITE	PANDUIT 2X2WH6N
	1	WIREWAY COVER 2"x6" WHITE	PANDUIT C2WH6N
F	4	GROUND BAR	SQUARED PK7GTA
G	1	CAT6 ETHERNET CABLE, RED	FROM COMMUNICATIONS PANEL
	1	GROUND WIRE	GREEN #8

RADIO PANEL PARTS LIST			
ITEM	QTY.	DESCRIPTION	MANUFACTURER
H	1	NEMA 4 16x12x8 ENCLOSURE	HOFFMAN A-16H1208SSLP
I	1	ENCLOSURE BACK PLATE	HOFFMAN A-16P12
J	1	ETHERNET RADIO, 900 Mhz, SS WITH DIN MOUNT	MDS INET II REMOTE
K	1	COAX JUMPER CABLE, 1 FT	GE ORDER CODE INETII-MD9A1AVFCD1NNO
L	1	SURGE PROTECTOR	LMR240, TNC RT ANGLE MALE TO N MALE, 1 FT
	AS REQ'D	3/8" COAX CABLE	POLYPHASER, DSL
	AS REQ'D	3/8" COAX CABLE HANGER KIT	3/8" SUPERFLEX FSJ2-50, N MALE TO N MALE
	AS REQ'D	COAX CABLE HANGER MOUNTING	WIRELESS SOLUTIONS BH-S38-NH
M	1	YAGI ANTENNA	STAINLESS STEEL CAMPS
N	3	FUSE TERMINAL	SCALA TY900
		F1 24 VDC +	AB 1492-H6 WITH FUSE
		F2 24 INET RADIO	2 AMP
		F3 24 SPARE	2 AMP
	1	FUSE TERMINALS END PLATE	AB 1492-N37
	3	FEED THRU TERMINAL	AB 1492-J3
	1	END BARRIER	AB 1492-EBJ3
	1	SCREW CENTER JUMPER BAR - 3 POLE	AB 1492-CJ5-3
	3	END ANCHOR - NORMAL DUTY	AB 1492-EAJ35
	1	DIN RAIL	WEIDMULLER EGU4/24
O	1	WIREWAY 1"x2"x6" WHITE	PANDUIT 1X2WH6N
	1	WIREWAY COVER 1"x6" WHITE	PANDUIT C1WH6N
P	1	GROUND BAR	SQUARED PK7GTA
Q	1	CAT6 ETHERNET JUMPER, 6 FT	TRIPPLITE N201-006-BL
	1	24V+ POWER CONDUCTOR	BLUE #12
	1	24V- POWER CONDUCTOR	WHITE/BLUE #12
	1	GROUND WIRE	GREEN #10

RADIO AND MAST PARTS LIST			
ITEM	QTY.	DESCRIPTION	MANUFACTURER
R	2	ETHERNET RADIO EXTERNAL ANTENNA	PROXIM QB-8200-EPA
	2	2 FOOT MICROWAVE DISH	MWAVE RPD2-54-N, DUAL POLARIZATION
	2	2 FOOT MICROWAVE DISH RADOME	MWAVE DSD2, RADOME
	4	4 FOOT COAX JUMPERS	TIMES LMR400, N MALE TO N MALE
	2	THREAD ADAPTER, 1/2" NPT to M25	A-NPTM-1225-BR, NICKEL PLATED BRASS
	AS REQ'D	LIQUID TIGHT FLEXIBLE METAL CONDUIT	TYPE LFMC
	AS REQ'D	CONDUIT, WEATHERHEADS, FITTINGS	
S	AS REQ'D	UNISTRUT, FITTINGS, ANCHORS	
T	2	WALL MOUNT ANTENNA MAST	
	AS REQ'D	WALL MOUNT SUPPRT AND ANCHORS	



17526 Von Karman, Suite B
Irvine, CA 92614 PH. (949) 250-8668
2985 East Hillcrest Drive, Suite 101
Thousand Oaks, CA 91362 PH. (805) 379-8668

LAS VIRGENES MUNICIPAL WATER DISTRICT
SCADA NETWORK UPGRADE
WESTLAKE FILTRATION FACILITY
ANTENNA MASTS AND PANELS

ISSUE No.	ISSUE DATE	DRWN BY	DES'D BY	CHK'D BY	ISSUED FOR	SHEET	OF
1	08/2014	LFT	LFT		BID	2	2
						DRAWING No. 1422-4.2	
						JOB No. 1422	
						SCALE: NONE	
						UNLESS NOTED OTHERWISE BY A SPECIFIC DETAIL	