



Next Resolution No. 01-09-2386
Next Ordinance No. 01-09-256

LAS VIRGENES MUNICIPAL WATER DISTRICT
4232 Las Virgenes Road
Calabasas, California

AGENDA
REGULAR MEETING

Members of the public wishing to address the Board of Directors are advised that a statement of Public Comment Protocols is available from the Clerk of the Board. Prior to speaking, each speaker is asked to review these protocols and MUST complete a speakers' card and hand it to the Clerk of the Board. Speakers will be recognized in the order cards are received.

The Public Comments agenda item is presented to allow the public to address the Board on matters not on the agenda. The public may present comments on any agenda item at the time the item is called upon for discussion.

Materials prepared by the District in connection with subject matter on the agenda are available for public inspection at 4232 Las Virgenes Road, Calabasas, CA 91302. Materials prepared by the District and distributed to the Board during this meeting are available for public inspection at the meeting or as soon thereafter as possible. Materials presented to the Board by the public will be maintained as part of the records of these proceedings and are available upon written request to the Clerk of the Board.

5:00 p.m.

JANUARY 27, 2009

PLEDGE OF ALLEGIANCE

1. CALL TO ORDER AND ROLL CALL

The meeting was called to order at ___ p.m. by ___ in the District offices, and the Secretary called the roll.

<u>Board of Directors</u>	<u>Present</u>	<u>Left</u>	<u>Absent</u>
Charles Caspary, President	_____	_____	_____
Lee Renger, Vice President	_____	_____	_____
Glen Peterson, Secretary/MWD Rep.	_____	_____	_____
Jeff Smith, Treasurer	_____	_____	_____
Joseph M. Bowman, Director	_____	_____	_____

2. APPROVAL OF AGENDA

Moved by Director _____, seconded by Director _____, and _____, that the agenda for the Regular Meeting of January 27, 2009, be approved as presented/amended.

3. **PUBLIC COMMENTS**

Members of the public may now address the Board of Directors **ON MATTERS NOT APPEARING ON THE AGENDA**, but within the jurisdiction of the Board. No action shall be taken on any matter not appearing on the agenda unless authorized by Subdivision (b) of Government Code Section 54954.2.

4. **ILLUSTRATIVE AND/OR VERBAL PRESENTATION AGENDA ITEMS**

- A Water Pressure Study, Westhills – Tract 23762
- B Legislative Update

5. **CONSENT CALENDAR**

- A Minutes: Regular Meetings of 10/28/08 and 11/25/08. APPROVE
- B List of Demands – 01/27/09. APPROVE
- C Investment Report for the Month of December 2008. APPROVE
- D Investment Review for the Fourth Quarter 2008. RECEIVE & FILE

Moved by Director_____, seconded by Director_____, and_____, that Consent Calendar Items 5A-5D be approved as presented.

6. **TREASURER**

7. **LEGAL SERVICES**

- A Resolution - Repealing Resolution No. 06-08-2382

Moved by Director_____, seconded by Director_____, and_____, that the Board, pass, approve and adopt as presented, Resolution 01-09-2385 Repealing Resolution 6-08-2382 Adopting Mandatory Water Conservation Measures.

RESOLUTION NO. 01-09-2385

A RESOLUTION OF THE BOARD OF DIRECTORS OF LAS VIRGENES
MUNICIPAL WATER DISTRICT REPEALING RESOLUTION NO. 06-08-2382

(Reference is hereby made to Resolution 01-09-2385 on file in the District's Resolution Book and by this reference the same is incorporated herein and made a part hereof.)

- B Water Conservation

Moved by Director_____, seconded by Director_____, and_____, that full reading of the proposed Ordinance No. 01-09-254 as it relates to Water Conservation be waived.

Moved by Director_____, seconded by Director_____, and_____, by the following roll call vote, that the proposed Ordinance No. 01-09-254 as it relates to Water Conservation, given second reading by title only, be passed, approved and adopted as presented.

Ayes: Noes: Abstain: Absent:

ORDINANCE 01-09-254

AN ORDINANCE OF THE BOARD OF DIRECTORS OF LAS VIRGENES MUNICIPAL WATER DISTRICT AMENDING ORDINANCE NO. 11-86-161 (LAS VIRGENES CODE) AS IS RELATES TO WATER CONSERVATION

(Reference is hereby made to Ordinance No. 01-09-254 on file in the District's Ordinance Book and by this reference the same is incorporated herein and made a part of hereof.)

C Potable Water Replacement Fund Standby Charge

Moved by Director_____, seconded by Director_____, and_____, that full reading of the proposed Ordinance No. 01-09-255 as it relates to Standby Charges for fiscal year commencing July 1, 2009, be waived.

Moved by Director_____, seconded by Director_____, and_____, by the following roll call vote, that the proposed Ordinance No. 01-09-255 as it relates to Standby Charges for fiscal year commencing July 1, 2009, given second reading by title only, be passed, approved and adopted as presented.

Ayes: Noes: Abstain: Absent:

ORDINANCE 01-09-255

AN ORDINANCE OF THE BOARD OF DIRECTORS OF LAS VIRGENES MUNICIPAL WATER DISTRICT AS RELATES TO STANDBY CHARGES FOR THE FISCAL YEAR COMMENCING JULY 1, 2009

(Reference is hereby made to Ordinance No. 01-09-255 on file in the District's Ordinance Book and by this reference the same is incorporated herein and made a part of hereof.)

8. FACILITIES AND OPERATIONS

A Corrosion Control Program 2008-09 – Approve Proposal

Moved by Director_____, seconded by Director_____, and_____, that the Board accept the proposal from Harper & Associates Engineering, Inc. in an amount not to exceed \$54,300.

B Tapia Water Reclamation Facility BNR Project: Biological Nutrient Project Phase II Award of Contract

Moved by Director_____, seconded by Director_____, and_____, that the Board award the contract for the Tapia Water Reclamation Facility BNR Biological Nutrient Reduction Project Phase II to Spiess Construction, Inc. in the amount of \$378,260; and that the remaining bid be rejected upon receipt of duly executed contract documents.

9. FINANCE AND ADMINISTRATION

Second Quarter Financial Review & Spotlight

Moved by Director_____, seconded by Director_____, and_____, that the Second Quarter Financial Review and Spotlight on LVMWD be received and filed.

10. RESOURCE CONSERVATION AND PUBLIC OUTREACH

Water Conservation Rebate Program Changes

Moved by Director_____, seconded by Director_____, and_____, that the Board approve the staff recommendation of Option 2, discontinuing the \$200 supplemental HECW rebate for applications received after January 23, 2009.

11. NON-ACTION ITEMS

- A Organization Reports
 - (1) MWD
 - (2) Other
- B Directors' Reports on Outside Meetings
- C Information Items
 - (1) Consultant Contracts Given Administrative Approval for the Three Month Period Ending December 31, 2008
- D General Manager Reports
- E Director's Comments

12. FUTURE AGENDA ITEMS

13. CLOSED SESSION

Conference with District Counsel - Potential Litigation

- A In the opinion of District Counsel, disclosure of the identity of the litigant would be prejudicial to the district.

Conference with District Counsel – Existing Litigation

- B Gerling America Insurance Company v. Woodland Construction, Inc. et al
- C Gerling America Insurance Company v. Vikron, Inc. et al
- D Cooper, et al. v. Calabasas Park Estates, et al
- E California Water Impact Network, et al v. California Department of Water Resources, et al
- F Mehta Construction Company v. LVMWD

14. OPEN SESSION AND ADJOURNMENT

UPCOMING EVENTS

MWD State Water Project Tour	February 6-8, 2009
ACWA 2009 D.C. Conference	February 24-26, 2009
CASA Washington D.C. Conference	March 9-11, 2009
MWD Colorado River/Hoover Tour	April 3-5, 2009



January 27, 2009 Board Meeting

TO: Board of Directors
FROM: Facilities & Operations

**Subject: Water Pressure Study
Westhills - Tract 23762**

SUMMARY

At the September 23, 2008 Board meeting, Mr. Kallich expressed the following concerns: 1) low water pressure served to his home, 2) if water supply at the location would be adequate for firefighting in light of recent fires in Chatsworth.

Mr. Kallich lives in Tract 23762 that is served from the 1235' backbone system. He is currently the President of the Westhills HOA which includes 177 homes in Tract 23762.

In response to the concerns and questions raised by the HOA Board of Directors for Tract 23762 in a subsequent meeting, staff performed field water pressure recording as well as an Information Update (Attachment A) to the Tract 23762 Pressure Study dated January 2003 (Attachment B).

Staff's conclusions and recommendations are as follows:

- 1) The current water pressure at the location is similar to the water pressure recorded in 2003. These water pressures are the same as the designed water pressure when the tract was first developed.
- 2) The water system retains its designed water supply and pressure requirements for firefighting.
- 3) Water pressure at the location is determined by infrastructure serving the development, not by operational parameters and services levels.
- 4) The 2003 Study recommendation of constructing a private pump station for each resident is still the quickest and most economical way to achieve the desired water pressure for each resident.

John Zhao, Principal Engineer, prepared this report.

 1/22/09

David R. Lippman Date
Director of Facilities and Operations

 01.22.2009

John R. Mundy Date
General Manager

4A

ATTACHMENT A

January 15, 2008

To: David R Lippman, P.E., Director of Facilities & Operations

From: John Zhao, P.E., Principal Engineer

**Subject: Information Update
Pressure Study dated January 2003
Mr. Joel Kallich, 24630 Kittridge Street, Tract 23762**

Introduction

In response to a water outage event due to a planned pipeline repair project, Mr. Kallich expressed the following concerns at the September 23, 2008 Board meeting:

- 1) Low water pressure in his second story home.
- 2) If water supply at the location would be adequate for firefighting in light of the recent fires in Chatsworth.

A subsequent meeting was held between David Lippman and the HOA Board of Directors for Tract 23762. Additional questions were raised by the HOA Board of Directors:

- 3) Would the increase in the water level in the Calabasas storage tank help increase water pressure?
- 4) What is the average water pressure and standard deviation for the entire Las Virgenes MWD service area?
- 5) Are the residents in Tract 23762 who are experiencing low water pressure underserved by LVMWD?
- 6) Where would be the location for a hydropneumatic station?
- 7) What would be the rate structure for operating the pump station?
- 8) What are the finance mechanisms to build the pump station?
- 9) New cost estimates.

Background

At the request of Mr. Joel Kallich that LVMWD investigate options to increase the water pressure in Tract 23762, a water pressure study was completed in January 2003 after field pressure was determined to be in between 37 psi and 48 psi.

The water pressure study concluded that the nominal water pressure, which is determined by the pressure difference between the 1235' backbone water pressure and the elevation pad at 24630 Kittridge, was 50.7 psi. This nominal pressure is greater than the minimum system pressure of 43 psi required by Section 3-3.111" minimum system pressure of LVMWD ordinance. Therefore, no mandatory action is needed from LVMWD.

The Study identified 5 options ranging from private pump station to connection to Los Angeles DWP services, and cost impacts associated with each option (see attachment 1).

Information Update

This information update utilizes information gathered in the January 1993 study supplemented by new information in an attempt to answer the questions raised by Mr. Kallich and the HOA Board of Directors.

Question #1: Low water pressure in Mr. Kallich's second story home

In response to the concern, staff performed a field water pressure recording over a two week period. A minimum of 38 psi to a maximum of 44 psi was recorded. These field water pressures are similar to the field water pressure recorded in the 1993 study. The pressure range is also within the "reasonable constant pressure delivered at its system pressure" as stated in Section 3-3.108 of the District Water Code. Although it is conceivable that Mr. Kallich would experience lower water pressure than the recorded field pressures at plumbing fixtures on the second story.

Question #2: If water supply and pressure at the location would be adequate for firefighting in light of the fire in Chatsworth

The recorded field water pressures from 38 psi to 44 psi are consistently above the minimum 20 psi pressure for firefighting. In the event of an outage, an interconnection to the City of Los Angeles water system can be activated near the location. This interconnection would provide supplemental water to the District 1235' backbone system if needed.

Question #3: Would the increase in the water level in the Calabasas storage tank help increase water pressure?

The Calabasas water storage tank is 32' in height with an overflow elevation at 31'. Normal operating high level alarm is set at 28', just 3' under overflow elevation. The low level alarm is typically at 15'. To operate a tank higher than the current 3' before overflow would increase the risk and frequency of overflowing and cause potential washout downstream of the overflow structure. In addition, in order to meet water quality standards and protect water in the tank from nitrification, the water level in the tank must be lowered and refilled with fresh water. Therefore, it is not feasible to operate the water tank constantly at high level.

Question #4: What is the average water pressure and standard deviation for the entire Las Virgenes MWD service area?

It is very difficult to measure the field average water pressure through LVMWD services area. The District currently provides five classes of services ranging from 1235' pressure zone to greater than 2200' pressure zone. In each pressure zones and even within the same tract, based on the building pad elevation and distance to the pump stations, water pressure may vary from slightly to significantly from one house to the next and from one end of the same service zone. to the other end. In order to determine the average water pressure for each of the service connections, hundreds, maybe thousands of sampling locations must be identified before the same number of pressure recordings have to be performed.

Question #5: Are the residents in Tract 23762 who are experiencing low water pressure underserved by the LVMWD?

Three basic elements that determine the water pressure in Tract 23762: the backbone water pressure, the pipe system that serves Tract 23762 and elevations of building pads in the tract which were built by the developer.

The backbone pressure is based on the water pressure supplied by the MWD of Southern California. Attachment 2 is a 12-month summary of water pressure from MWD at the LV-2 interconnection. This backbone pressure was part of the design requirements which are applied to all developments within LVMWD service area, including Tract 23762.

Once the development is constructed, the water pressure, like the building pad elevations and the pipe system, is set permanently independent of daily operation and services levels. Unless there is a change in the 1235' backbone system, which is not possible, the water pressure in Tract 23762 will stay at the same level as it was designed for.

Question #6: Where would the location for a hydro-pneumatic station be?

The January 2003 water pressure report identified that a hydro-pneumatic pump station could be designed and installed on the District's fee parcel in the Tract.

Question #7: What would the rate structure for operating a booster station be?

LVMWD has five classes of service for water delivered. If a hydro-pneumatic booster station is constructed, the residents served by the pump station will be paying Zone II rates for water pressure between 1235' to 1700'. Please see the attached current rate sheet.

Question #8: What are the finance mechanisms to build the booster station?

An improvement District for the 25 homes identified in the January 2003 study would likely be the common finance mechanism to construct a booster station.

Question #9: New cost estimate

Of the five options considered, the 2003 report recommended a private pump station as the quickest and most economical way to increase water pressure to each homeowner's desire level. The 2003 cost estimate is \$2,500 for each homeowner. Based on the most recent research, a private pump station would cost approximately \$3,000 based on varieties of types and models.

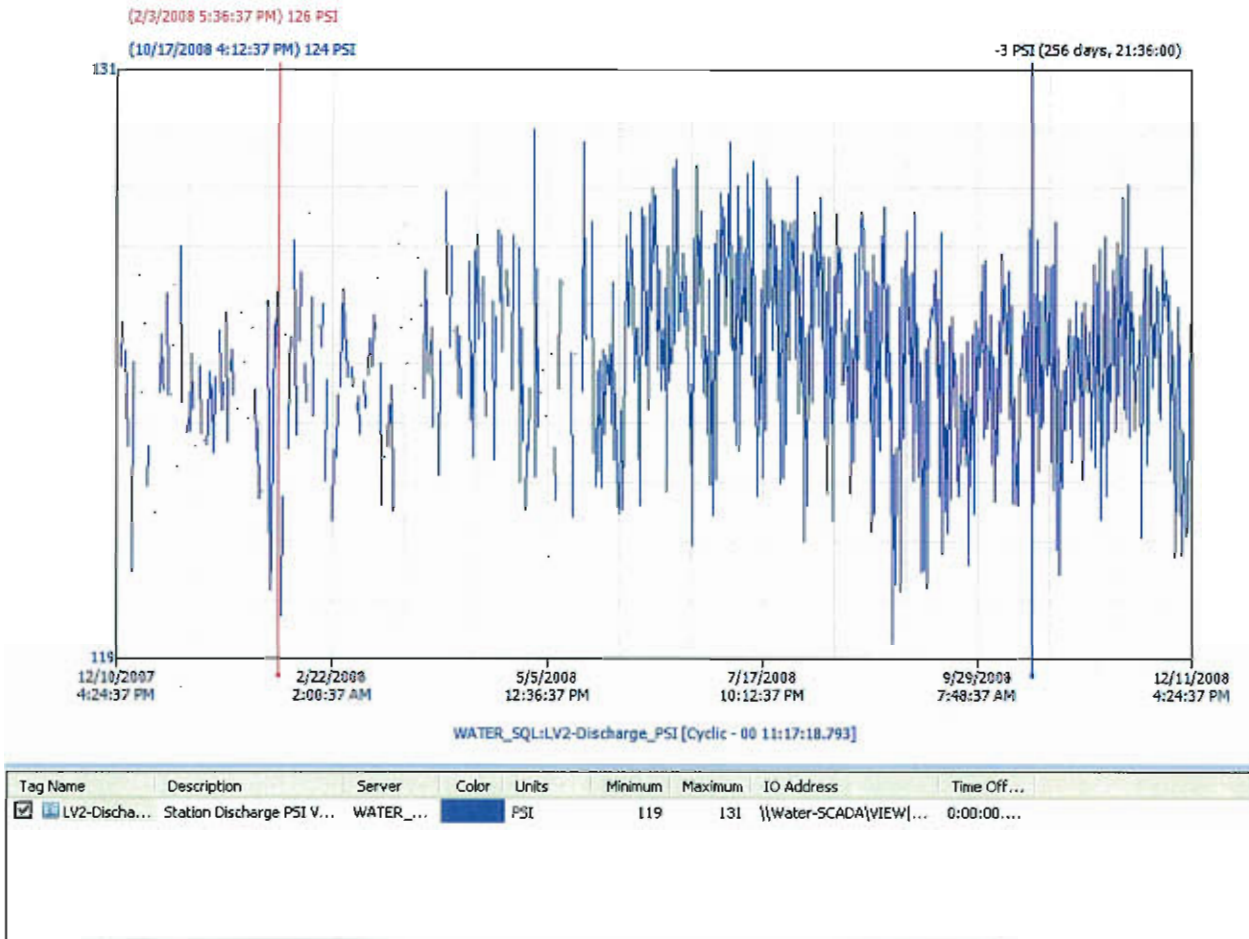
The 2003 report estimated the cost of a District hydropneumatic pump station at \$150,000 to \$200,000. Based on Engineer News Records cost of construction index, current cost for such a system would cost 30% more than the 2003 cost estimate.

Table 2
Comparison of Options Tract 23762

Option	Estimated capital cost per home	Pressure increase to above 50 psi	Time to implement	Long term costs	Requires other agency approval	Affects whole tract?
Private Pump	\$ 2,500.00	Y	Short	Minor	Yes (B&S)	No
Booster Station	\$ 8,000.00	Y	Long	Higher bills (zone II)	Yes (CEQA)	No (25 homes)
Larger Lateral	\$ 4,500.00	N	Med	None	No	No
DWP Service	\$ 283.00	Y	Long	Higher bills (1.5 times)	Yes (DWP)	Yes (177 homes)
DWP Service	\$ 2,000.00	Y	Long	Higher bills (1.5 times)	Yes (DWP)	Yes (25 homes)

DWP Service is shown either for all 177 homes or just the 25 homes that would have been in the upper zone. The DWP 25 home option cost is depend on the location of DWP facilities to the pump station fee parcel .

ATTACHMENT 2



ATTACHMENT 3

RATES



C
U
S
T
O
M
E
R

S
E
R
V
I
C
E

Service Zones

To cover additional costs of infrastructure and power to pump water to higher locations, billir with people living at higher elevations paying higher costs per unit of water. 95% of district ci zones 1 and 2.

Zone 1, includes all domestic water customers receiving water that does not require pumpin gradient of 1235 feet.

Zone 2, includes all domestic water customers receiving water that requires pumping to elev 1235 and 1700 feet.

Zone 3, includes all domestic water customers receiving water that requires pumping to elev 1700 and 2200 feet.

Zone 4, includes all domestic water customers receiving water that requires pumping to elev 2200 feet.

Zone 5, includes all domestic water customers who are served water purchased by the Distr other than the Metropolitan Water District of Southern California.

Potable Water Rates	Tier 1	Tier 2	Tier 3	Tier 4
Commodity Charge per unit	\$ 1.28	\$ 1.60	\$ 2.39	\$ 3.58
Zone 1 Elevation Charge per unit	\$0.00	\$0.00	\$0.00	\$0.00
Zone 2 Elevation Charge per unit	\$0.33	\$0.33	\$0.33	\$0.33
Zone 3 Elevation Charge per unit	\$0.56	\$0.56	\$0.56	\$0.56
Zone 4 Elevation Charge per unit	\$0.98	\$0.98	\$0.98	\$0.98
Zone 5 Elevation Charge per unit	\$1.97	\$1.97	\$1.97	\$1.97

Recycled Water Rates	Tier 1	Tier 2	Tier 3	Tier 4

Las Virgenes Valley Zone Commodity Charge	\$ 0.94	\$ 1.23	\$ 1.95	\$3.02
Western / Calabasas Zone Commodity Charge	\$1.14	\$1.43	\$2.15	\$3.22

Temporary Water Rates	Zone 1	Zone 2	Zone 3	Zone 4	Zone 5
	Potable	\$ 5.37	\$ 5.86	\$ 6.21	\$ 9.52
Recycled	LV Valley \$4.53		Calabasas \$4.83		

Tier Break Points

Single Family Residence	Multi-Family Residence
First 16 units	First 12 units
Next 51 units	Next 2 units
Next 133 units	Next 10
Over 200 units	Over 24 units

Commercial / Irrigation / Recycled							
Meter Sizes							
3/4"	1"	1 1/2"	2"	3"	4"	6"	8"
First 16	First 28	First 53	First 85	First 171	First 267	First 533	First 852
Next 51	Next 88	Next 168	Next 270	Next 546	Next 852	Next 1,698	Next 2,547
Next 133	Next 226	Next 439	Next 705	Next 1,423	Next 2,221	Next 4,429	Next 6,642
Over 200	Over 340	Over 660	Over 1,060	Over 2,140	Over 3,340	Over 6,660	Over 9,960

Readiness to Serve Charge

Meter Size	
3/4"	\$23.79 (standard household service)
1"	\$35.03
1 1/2"	\$63.12
2"	\$96.84
3"	\$187.00
4"	\$288.00
6"	\$569.00
8"	\$906.00
10"	\$1,299.00

12"	\$1,861.00
Temporary Meters	
1"	\$26.27
2 1/2 - 3"	\$140.25
4"	\$216.00
6"	\$426.75
8"	\$679.50
10"	\$974.25

Sanitation Service Charge

Effective July 1, 2008 This charge is determined by totaling the annual cost for wastewater throughout the district and dividing by the number of properties served. This fee includes the treatment to transform wastewater to recycled supplies, safe to return to the community for its discharge into the unique local environment.

Residential	Bi - monthly S
Single Family You are eligible to receive a 10% discount on your sanitation service charge when your water use is kept within the first tier (16 billing units).	
Multi-Family	
Commercial Accounts ~ call Customer Service for more information	818

[Who We Are](#) | [Customer Service](#) | [Your Water](#) | [Community Outreach](#) | [Hot Topics](#)
[Conservation](#) | [Employment Opportunities](#) | [Doing Business](#) | [FAQ's](#) | [HOME](#) | [SiteMap](#)

Feedback and Inquiries

updated: July 29, 2008

ATTACHMENT B

January 7, 2003

To: James E. Colbaugh, General Manager
John R. Mundy, Director of Facilities & Operations

From: David R. Lippman, P.E. Facilities Manager

Subject: Tract 23762
Joel Kallich 24630 Kittridge Street
Pressure Compliant

Introduction

Mr. Joel Kallich of 24630 Kittridge Street in West Hills has requested that the district investigate options to increase the pressure in his neighborhood. Mr. Kallich lives in Tract 23726 that is served from 1235-foot backbone system. He has been a resident for 15 years and is the President of the West Hills HOA that includes the 177 homes in Tract 23762.

Background

Tract 23762 is located west of Valley Circle Blvd. and is served from the 1235-foot system. This tract was constructed in 1965 during the early development of the district. Tract 23762 was the first phase of a larger tract (30057). The second phase located to the west of Randiwood Lane was envisioned to be served from a pump station storage tank system. In anticipation of this upper system, higher-pressure class piping was installed in Kittridge west of Vickiview and in Randiwood to Welby Way as shown on the attached map. A small pump station site, 2,200 square feet in area, was also dedicated to the district. If the upper system had been constructed 25 homes in tract 23762 would have been served from it. However the development to the west was never constructed and the 25 homes have been served from the 1235-foot system since 1965. Of the 25 homes four appear to have recorded elevation agreements, all located on Randiwood Lane¹.

Mr. Kallich's property is the western most home on Kittridge Street with an estimated pad elevation of 1,118 feet². Based on the nominal hydraulic gradient of 1235-feet, the static pressure at the point of service for this property would be 50.6 psi. Pressure recorders were set adjacent to Mr. Kallich home during October and November of 2002 and the maximum and minimum pressures are summarized in the table 1.

Table 1

Date	Min Pressure PSI	Max Pressure
9/25 – 10/02/02	37	45
10/02 – 10/03/02	38	45
11/04 – 11/11/02 ³	40	48

The street elevations on the water plans⁴ for the area that was to be included in the upper pressure zone range from 1075.0 to 1141.8 feet which correspond to calculated static

¹ Parcel Map 605 - 6712, 6720, 6728 & 6736 Randiwood Lane

² Based on a tentative tract map for tract 30057 dated April 28, 1965.

³ This time period includes several days when the tract was connected to LADWP facilities. During this time period the maximum pressure was 64 psi. Table 1 represents pressure when served from LVMWD facilities.

⁴ Dated December 30, 1965

pressures of 69.3 to 40.4 psi. The high point is opposite the four homes with the recorded elevation agreements. The pad elevations for these 25 homes range from 1074.0 to 1133.0⁵ feet, which correspond to, calculated static pressures of 69.7 to 43.3 psi.

Options

Five potential options have been identified to address pressure concerns in tract 23762.

1. Installation of individual private booster pumps
2. Installation of a hydropneumatic pump station
3. Installation of larger service laterals from the main to the meter
4. Connection to LADWP facilities
5. Do nothing since all pads receive the district's minimum static pressure of 43 psi⁶.

Private Booster Pumps

The customer may install individual private hydropneumatic booster pumps that would increase their pressure after the district's meter. Any licensed plumbing contractor could supply and install the pump. The estimated purchase and installation cost ranges between \$1,500 and \$2,500 depending pump selection and the homes plumbing configuration. It appears that this option was considered for several of the lots during construction of the water system, however 24630 Kittridge was not one of them. The four lots recommended having individual booster pumps were the four lots that became Parcel Map 605⁷, which are the four lots with recorded elevation agreements.

District Hydropneumatic Pump Station

A hydropneumatic pump station could be designed and installed on the district's fee parcel to provide increased domestic pressure to the 25 homes that would have been included in the proposed upper zone. Fire flow would be provided from the 1235-foot system via a check valve. The estimated cost for the planning, design and installation of the station ranges from \$150,000 to \$200,000. The process to provide a hydropneumatic pump station would require a site study to determine that the fee parcel is adequate in size, preliminary design, preparation of CEQA documentation to determine environmental impacts, detailed design and construction. This process would take 12 to 24 months to complete.

Larger Service Laterals

Currently the homes in tract 23762 are served by one-inch service laterals and ¾" meters. A larger service lateral (1 ½ to 2 inch) would decrease the friction loss and increase the available pressure at the meter. There are two cases to consider when determining the pressure increase available from installation of a larger service lateral, a short side service and a long side service. The short side service estimated pressure increase measured at the meter inlet would be 3.1 psi @ 30 gpm and the estimated pressure increase for a long side service would be 8.16 psi @ 30 gpm. These calculations are based on the installation of a 1-½ inch lateral. 24630 Kittridge is a short side service. The cost to install larger service laterals would range from \$3,600 to \$4,500 each. If this option was selected the homeowner's should also increase their on-site plumbing from the meter to the house.

Connection to LADWP Facilities

LADWP has facilities located near the intersection of Kittridge Street and Julie Lane providing service at a hydraulic gradient of 1,288 feet, 53 feet higher than the backbone system. Based on the 1,288-foot gradient, the property at 24630 Kittridge would have a

⁵ Based on a tentative tract map for tract 30057 dated April 28, 1965.

⁶ With the exception of the four lots with recorded elevation agreements.

⁷ See correspondence in Tract 23762 and PM 605 files.

calculated static pressure of 73.6 psi. The district has an agreement with LADWP for temporary service from their facilities during periods when service is not available from our MWDSO turnouts or during an emergency. If permanent service were to be provided solely to tract 23762 from the LADWP facilities a different agreement would be required, and a metered connection sized to provide fire flow would have to be installed and potentially water cost to the homeowners would increase⁸. The capital cost of designing and installing the metered connection is estimated at \$50,000. This option may be available to only the 25 homes that were to be in the upper zone depending on the location of LADWP facilities near the intersection of Kittridge Street and Vickiview Drive. However additional research of LADWP facilities is needed to determine the feasibility of serving only the upper 25 homes.

Conclusion and Recommendation

Section 3-3.111 "Minimum System Pressure" of the district's ordinance states, "The nominal hydraulic gradient at the point of use for the system is 43-psi static pressure. If the minimum expected hydraulic gradient at the point of use is between 43 and 35 psi the applicant may install a service connection at least one size larger than would be needed if the pressure were 43 psi or the applicant may execute an elevation agreement."⁹

The nominal hydraulic gradient serving 24630 Kittridge Street is 1,235 feet that equates to a static pressure of 50.7 psi at the point of use, which is greater than 43 psi. The point of use is defined as the district's meter. The actual minimum pressures measured at this location were between 40 and 37 psi, greater than 35 psi.

Of the five options considered the installation of a private booster pump by the customer is the recommended option. As shown in table 2 this option is the quickest for the homeowner to implement, provides an adequate pressure increase, results in minor capital costs and is an individual choice for each homeowner. Section 3-3.109 "Pressure, Supply and Emergency Storage" of the district's ordinance states in part "The district offers water at its system pressure, and the applicant must install adequate plumbing and protective devices in accordance with the current Uniform Plumbing Code in order to utilize the available water at whatever reasonable constant pressure is available in the system." The pressure supplied to the upper portion of tract 23762, including 24630 Kittridge Street, meets the requirements of section 3-3.111 and it is the homeowner's responsibility to install devices to increase available pressure after the meter.

⁸ Typically customers served from an adjacent agency are charge 1.5 times the cost of the purchased water. In addition, service from outside the district's boundaries would be deemed "temporary" from LADWP and could be cut off during times of shortage.

⁹ In comparison the 2002 Uniform Plumbing Code (section 608.1) defines inadequate pressure as less than 15 psi, the LADWP sets a minimum pressure requirement of 43 psi and the LACFD requires a minimum of 20-psi residual pressure under fire flow conditions.

Table 2
Comparison of Options Tract 23762

Option	Estimated capital cost per home	Pressure increase to above 50 psi	Time to implement	Long term costs	Requires other agency approval	Affects whole tract?
Private Pump	\$ 2,500.00	Y	Short	Minor	Yes (B&S)	No
Booster Station	\$ 8,000.00	Y	Long	Higher bills (zone II)	Yes (CEQA)	No (25 homes)
Larger Lateral	\$ 4,500.00	N	Med	None	No	No
DWP Service	\$ 283.00	Y	Long	Higher bills (1.5 times)	Yes (DWP)	Yes (177 homes)
DWP Service	\$ 2,000.00	Y	Long	Higher bills (1.5 times)	Yes (DWP)	Yes (25 homes)

DWP Service is shown either for all 177 homes or just the 25 homes that would have been in the upper zone. The DWP 25 home option cost is depend on the location of DWP facilities to the pump station fee parcel .

Tract 23672

District Hydro-pneumatic Station Planning Level Estimate

		Case 1	Case 2
		20 hp	30 hp
Construction Cost	\$4,000/hp	\$ 80,000	\$ 120,000
Prelim Design	10% CC	\$ 8,000	\$ 12,000
CEQA	\$10,000	\$ 10,000	\$ 10,000
Design	15% CC	\$ 12,000	\$ 18,000
Bidding	1% CC	\$ 800	\$ 1,200
Dist labor	10% CC	\$ 8,000	\$ 12,000
Sum		\$ 118,800	\$ 173,200
15% contingency		\$ 17,820	\$ 25,980
Total Estimate		\$ 136,620	\$ 199,180

Case 1 assumes 2 pumps 1 duty & 1 stand by @ 10 hp each

Case 2 assumes 2 pumps 1 duty & 1 stand by @ 15 hp each

Say \$150,000 to \$200,000

These estimates are planning level estimates only

Assumes current fee parcel is adequate in size and minimal grading is required

Assumes 480-volt power at or near fee parcel

Tract 23762

12/27/02
DRL

Friction Loss Δ w/ Larger Service Lateral

$$1'' \text{ lateral loss} = 54.6' / 100' @ 30 \text{ gpm} \quad (1)$$

$$1\frac{1}{2}'' \text{ lateral loss} = 6.26' / 100' @ 30 \text{ gpm} \quad (1)$$

$$\text{short side service} = 15' \text{ length} \quad (2)$$

$$\text{long side service} = 39' \text{ length} \quad (2)$$

Short side

$$1'' = (54.6' / 100') * 15' = 8.19' = 3.55 \text{ psi}$$

$$1\frac{1}{2}'' = (6.26' / 100') * 15' = 0.94' = 0.41 \text{ psi}$$

$$\text{Diff} = 3.55 - 0.41 = \underline{\underline{3.14}} \text{ psi @ 30 gpm}$$

Long side

$$1'' = (54.6' / 100') * 39' = 21.29' = 9.22 \text{ psi}$$

$$1\frac{1}{2}'' = (6.26' / 100') * 39' = 2.44' = 1.06 \text{ psi}$$

$$\text{Diff} = 9.22 - 1.06 = \underline{\underline{8.16}} \text{ psi @ 30 gpm}$$

Cost Estimate

$$3 \text{ men, } 16 \text{ hours @ } \$75 / \text{hr} = \$3600 \text{ short side} \quad (3)$$

$$3 \text{ men, } 20 \text{ hours @ } \$75 / \text{hr} = \$4500 \text{ long side}$$

(1) Fig A.2 Water Dist System O&M CSU Sac 1987.

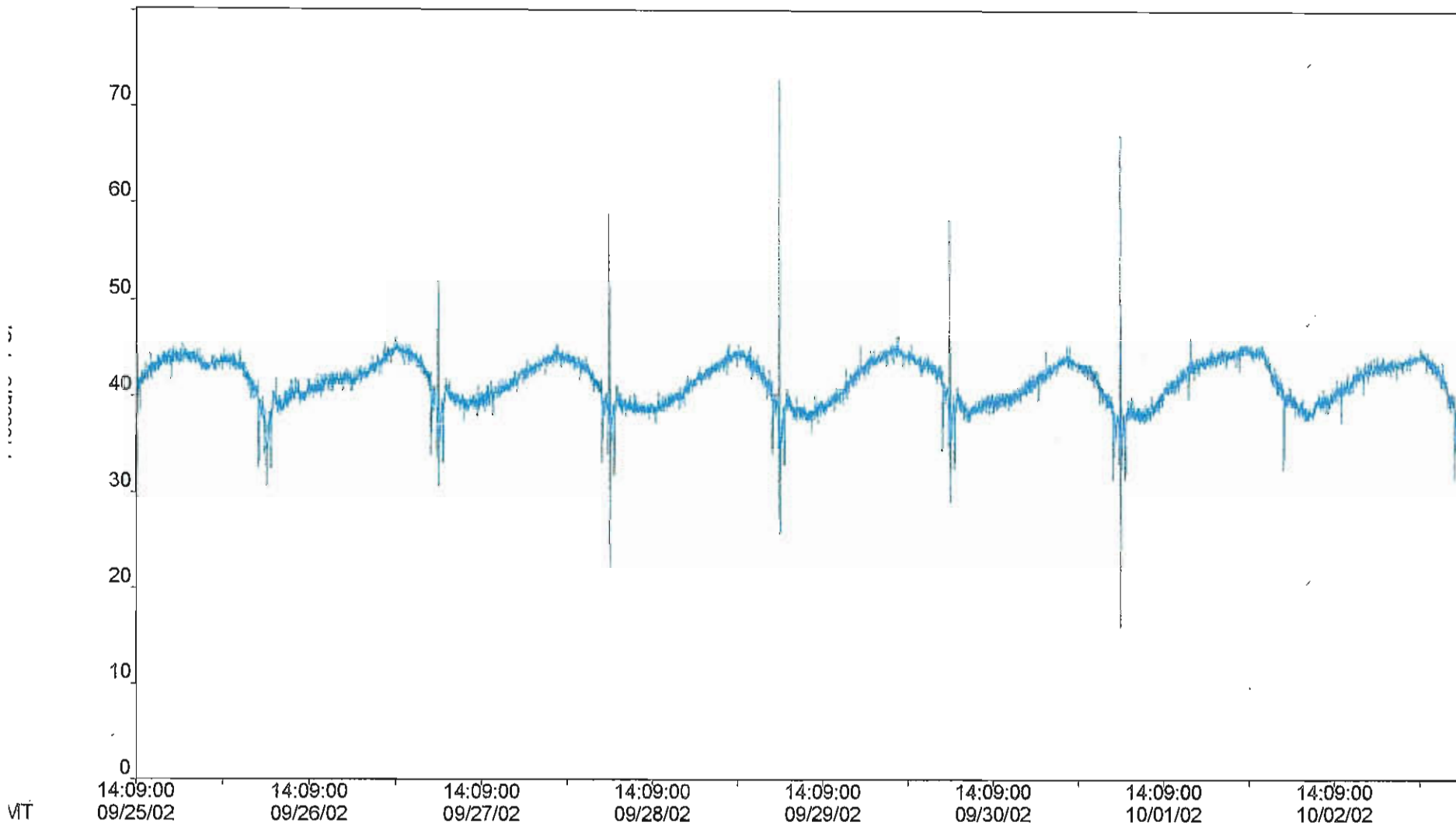
(2) measured from water plans

(3) est includes equip & mat'l

Radcom View Data

Company Name: Las Virgenes Municipal Water District
Division: Water Treatment & Production
Department: Operations

Pressure:

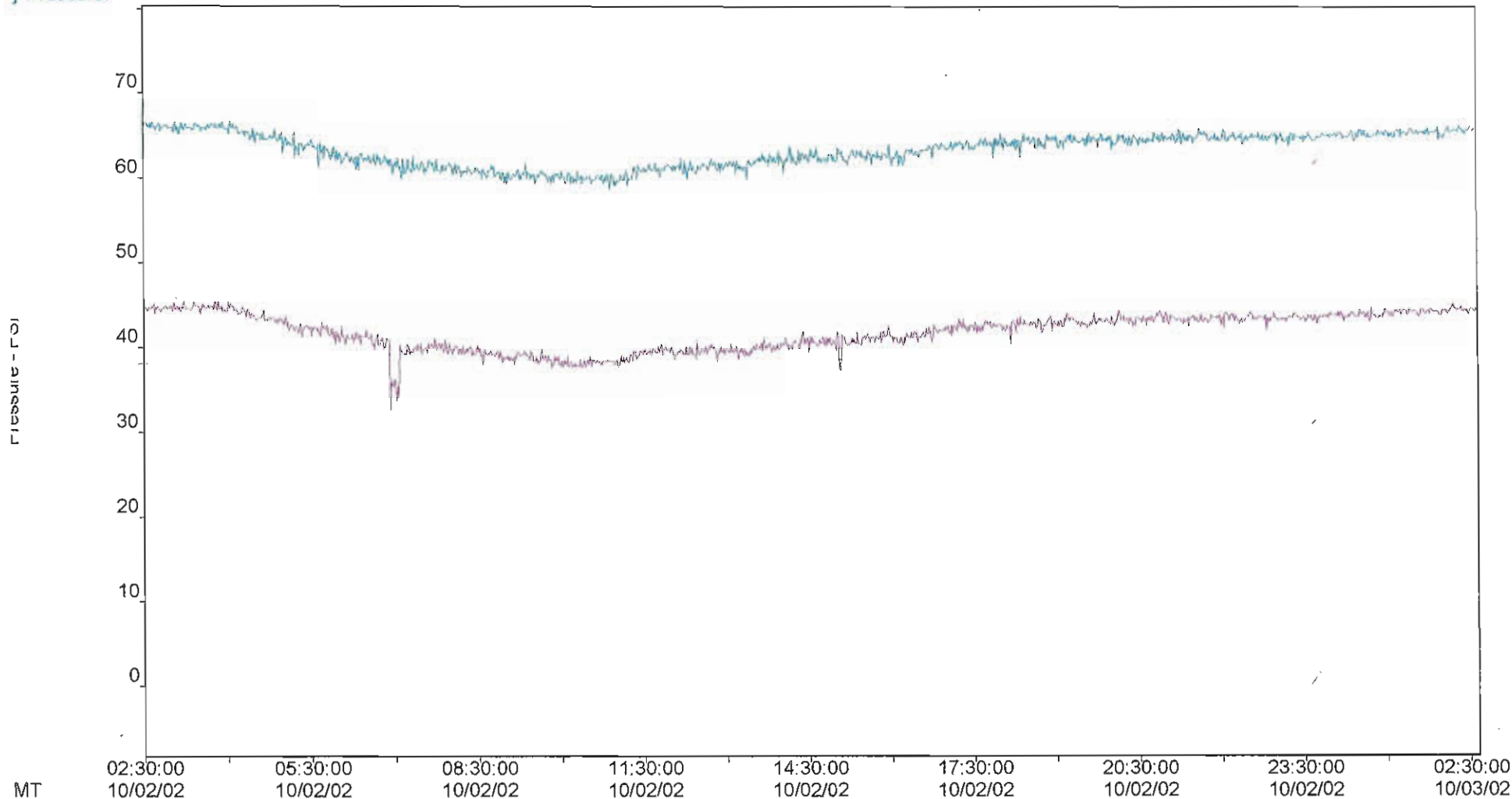


1] Pressure: __03_03 on service before house on Kittridge #838 09/25/02 : M0001 Channel 1 :

Radcom View Data

Company Name: Las Virgenes Municipal Water District
Division: Water Treatment & Production
Department: Operations

[2] Pressure:
[1] Pressure:

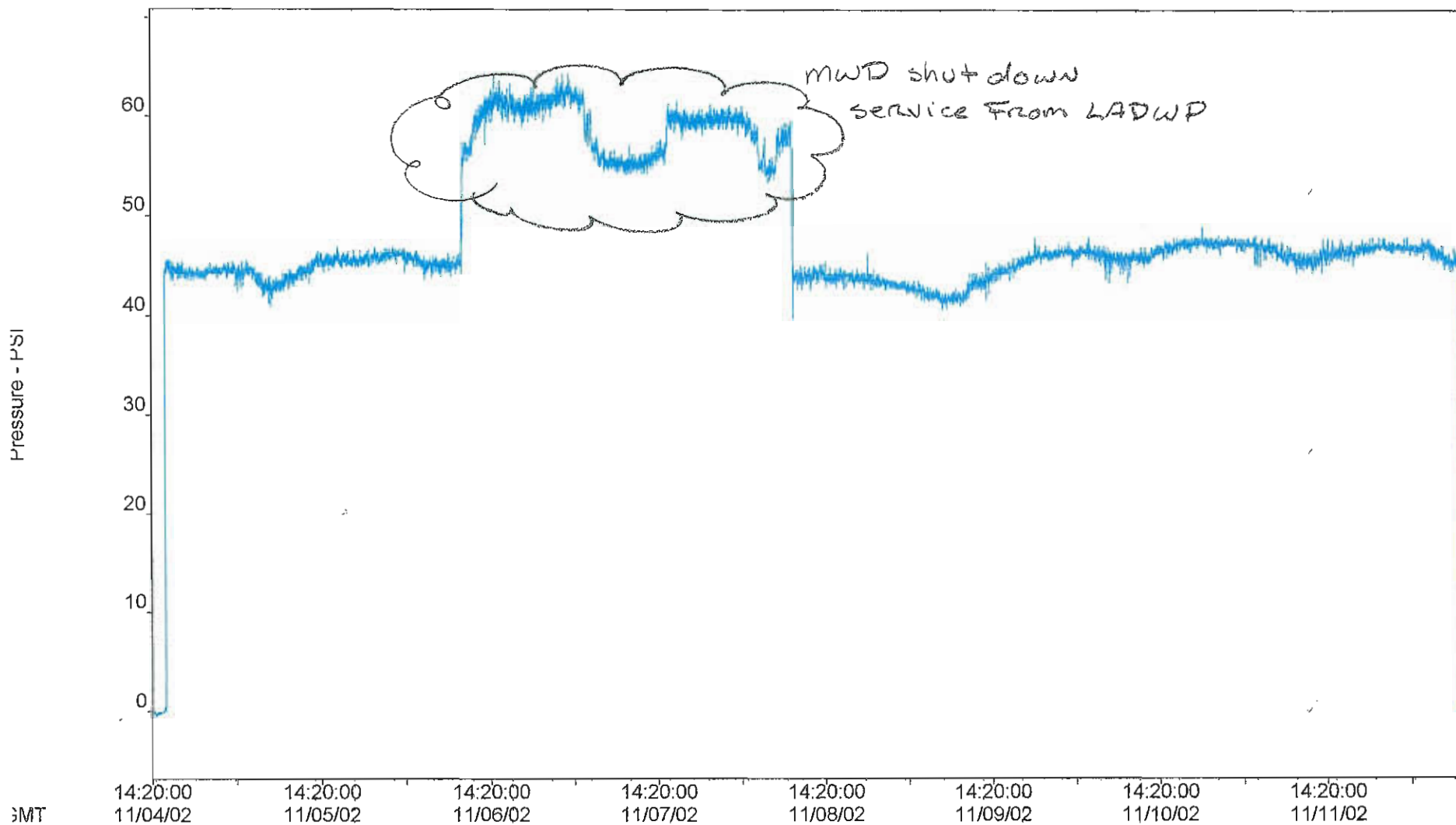


[2] Pressure: __03_03 on service before house on Kittridge #838 09/25/02 : M0001 Channel 1 :
[1] Pressure: __03_06 FH at add. 171 Kittridge/Randiwood # 840 09/25/02 : M0001 Channel 1 :

Radcom View Data

Company Name: Las Virgenes Municipal Water District
Division: Water Treatment & Production
Department: Operations

[1] Pressure:



[1] Pressure: __03_03 FH @ 24630 Kittridge 11-4-02 : M0002 Channel 1 :

3-3.108

CLASSES OF SERVICE

The classes of service for water delivered by the district are:

- (a) Zone I, which includes all domestic water customers receiving water that does not require pumping above a hydraulic gradient of 1235'. As used in this Title, Hydraulic Gradient or H.G. shall mean the maximum water elevation represented by the pressure in water system, or the maximum surface elevation of the water in the reservoir serving the system.
- (b) Zone II, which includes all domestic water customers receiving water that requires pumping to elevations between 1235' and 1700'.
- (c) Zone III, which includes all domestic water customers receiving water that requires pumping to elevations between 1700' and 2200'.
- (d) Zone IV, which includes all domestic water customers receiving water that requires pumping to elevations greater than 2200'.
- (e) Zone V, which includes all domestic water customers who are served water purchased by the district from other than The Metropolitan Water District of Southern California.
- (f) Temporary, which is as defined hereinabove.
- (g) Private fire service, which is as defined hereinabove.

3-3.109

PRESSURE, SUPPLY AND EMERGENCY STORAGE

The district will exercise reasonable diligence and care to deliver a continuous and adequate supply of water to the customer at a reasonable constant pressure and to avoid any shortage or interruption in delivery. The district offers water at its system pressure, and the applicant must install adequate plumbing and protective devices in accordance with the current Uniform Plumbing Code in order to utilize the available water at whatever reasonable constant pressure is available in the system. The district is not responsible for the maintenance of pressure and reserves the right to discontinue service while making repairs required in the operation of the water system. Customers depending upon a continuous supply should provide for their own emergency storage.

3-3.110

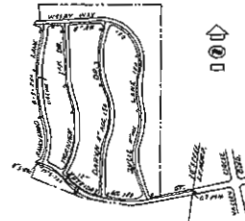
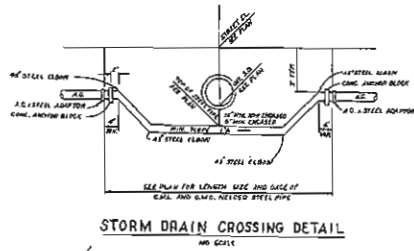
MAXIMUM SYSTEM PRESSURE

Regulators will be required ahead of the district's meter where static pressures are in excess of 150 psi. Applicants for service will be charged for the district's costs of furnishing and installing the regulator, which the district will attempt to set at any pressure under 150 psi desired by the applicant. The district assumes no liability for the accuracy of the regulator pressure setting, nor the reliability of the regulator.

3-3.111

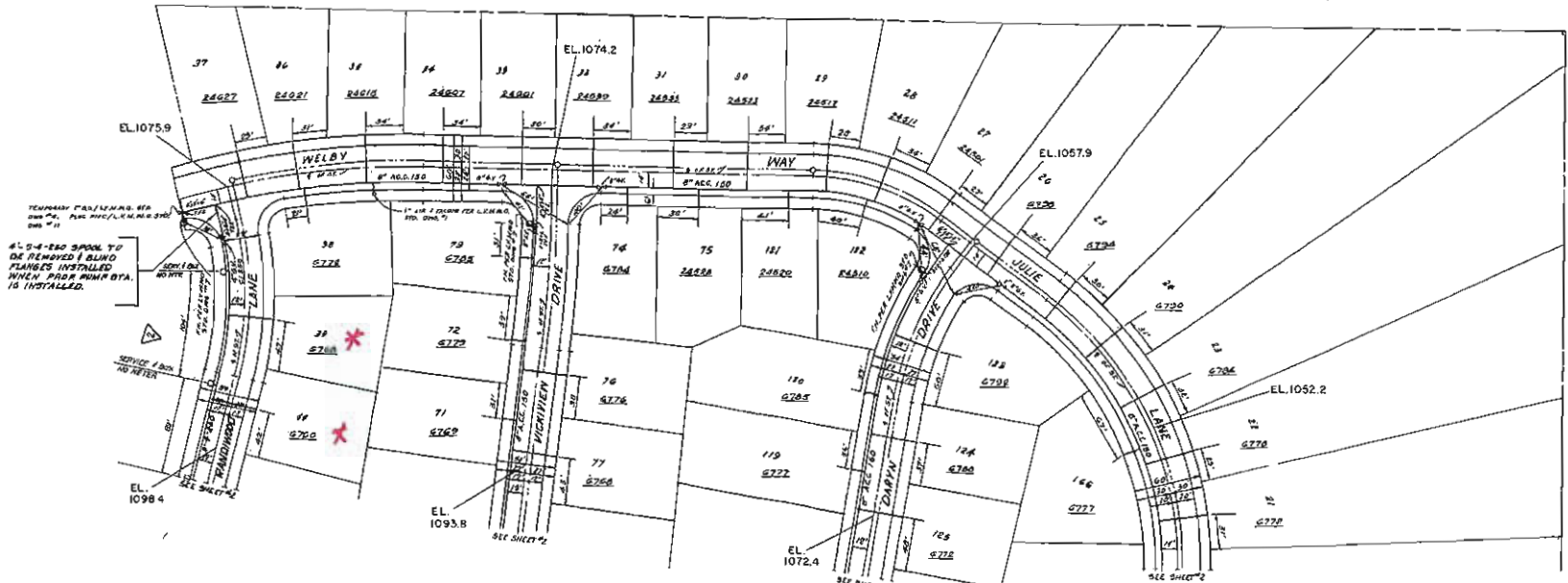
MINIMUM SYSTEM PRESSURE

The nominal hydraulic gradient at the point of use for the system is 43-psi static pressure. If the minimum expected hydraulic gradient at the point of use is between 43 and 35 psi the applicant may install a service connection at least one size larger that would be needed if the pressure were 43 psi or the applicant may execute an elevation agreement. If the minimum gradient at the point of use is lower than 35 psi, the applicant must execute an elevation agreement. The form for elevation agreements shall be as from time to time approved by the Board.



GENERAL NOTES

1. ALL WORK AND ALL MATERIALS SHOWN ON THE PLANS SHALL BE IN ACCORDANCE WITH THE MIN. STANDARDS OF THE COUNTY OF LOS ANGELES AND WATER MAINS AND WATER SYSTEM MATERIALS AND CONSTRUCTION RULES TO THE CREDIT OF THE BOARD OF SUPERVISORS.
2. ALL WORK AND MATERIALS SHALL BE APPROVED BY L.A.M.W.D. IN ACCORDANCE WITH THE LATEST REVISIONS OF L.A.M.W.D. SPEC. I STD. DMS. THE CONTRACTOR SHALL NOTIFY THE SUPERVISOR FROM L.A.M.W.D. AND L.A. COUNTY ENGINEER IN BUREAU BEFORE STARTING WORK. THE CONTRACTOR SHALL VERIFY AND PROTECT IN PLACE ALL EXISTING UNDER GROUND STRUCTURES.
3. ALL FITTINGS SUBJECT TO THIS LIST SHALL HAVE THROTTLE BLOCKS FOR VALVE D. STANDARD DIA. 1/2" OR AS NOTED.
4. ALL SERVICES SHALL BE SIZED BY L.A. COUNTY ENGINEER, BUILDING AND SAFETY AND SHALL BE INSTALLED TO THE LIMIT OF SERVICE TAPPING FOR L.A.M.W.D. STANDARD DIA. 1/2", 1/2" AND 3/4" AS APPLICABLE. THE LATEST REVISIONS.
5. ALL SERVICES SHALL BE INSTALLED PER L.A.M.W.D. STANDARD DIA. 1/2" WITH VALVE BOX AND COVER PER L.A.M.W.D. STANDARD DIA. 1/2".
6. ALL FIRE HYDRANTS SHALL BE BUILT PER L.A.M.W.D. STANDARD DIA. 1/2" WITH 6" x 6" x 24" HEADS.
7. COMPLETE HYDRANT TO BE FURNISHED BY CONTRACTOR.
8. FIRE HYDRANTS TO BE BUILT PER SPEC. OF UTILITY MANUAL.
9. FIRE SHOWN AS A C.S. 200 MAY HAVE 12" DIA. C.I. AND C.I. STEEL PIPE OF THE SAME DIAMETER SUBSTITUTED FOR DIAMETERS LESS THAN 12" DIA. PIPE FOR DIAMETERS OVER 12" IF APPROVED BY L.A.M.W.D.
10. ALL SERVICES SHALL HAVE INDIVIDUAL PRESSURE REGULATORS (R.O.M. EXCEPT 1000).
11. ALL SERVICES ARE TO BE METERED. LOTS HAVING MORE THAN ONE SERVICE SHALL HAVE CHECK VALVES.
12. REQUIRED FIRE TAP.
13. 1800 DIA. 2" R.O.M. RESIDUAL IN R-1 EDGE.
14. ALL METER WATERMETERS TO BE INSTALLED BY WORKING UPON APPLICATION (PRODUCT OF PUBLISHING FIRM).
15. ALL METER WATERMETERS SHALL HAVE AIR / VAC. VALVE ASSEMBLY.
16. LOCATION OF SERVICE TO BE PERMANENTLY MARKED ON THE FACE OF THE CURB WITH A "T" AND THE CONTRACTOR SHALL BE RESPONSIBLE FOR THE LOCATION UNTIL SUCH TIME AS THE L.A.M.W.D. HAS INSTALLED THE METERS. (SERVICES TENDING TO METER BOX PAID. METER BOX SET TO CURB.) IS THE RESPONSIBILITY OF THE CONTRACTOR. THE METER WILL BE INSTALLED PER NOTE NO. 10.



TEMPORARY POLYETHYLENE PIPE SHALL BE REMOVED AND BLIND FLANGES INSTALLED WHEN PUMP MAIN DIA. IS INSTALLED.

* = lots in upper zone

00034

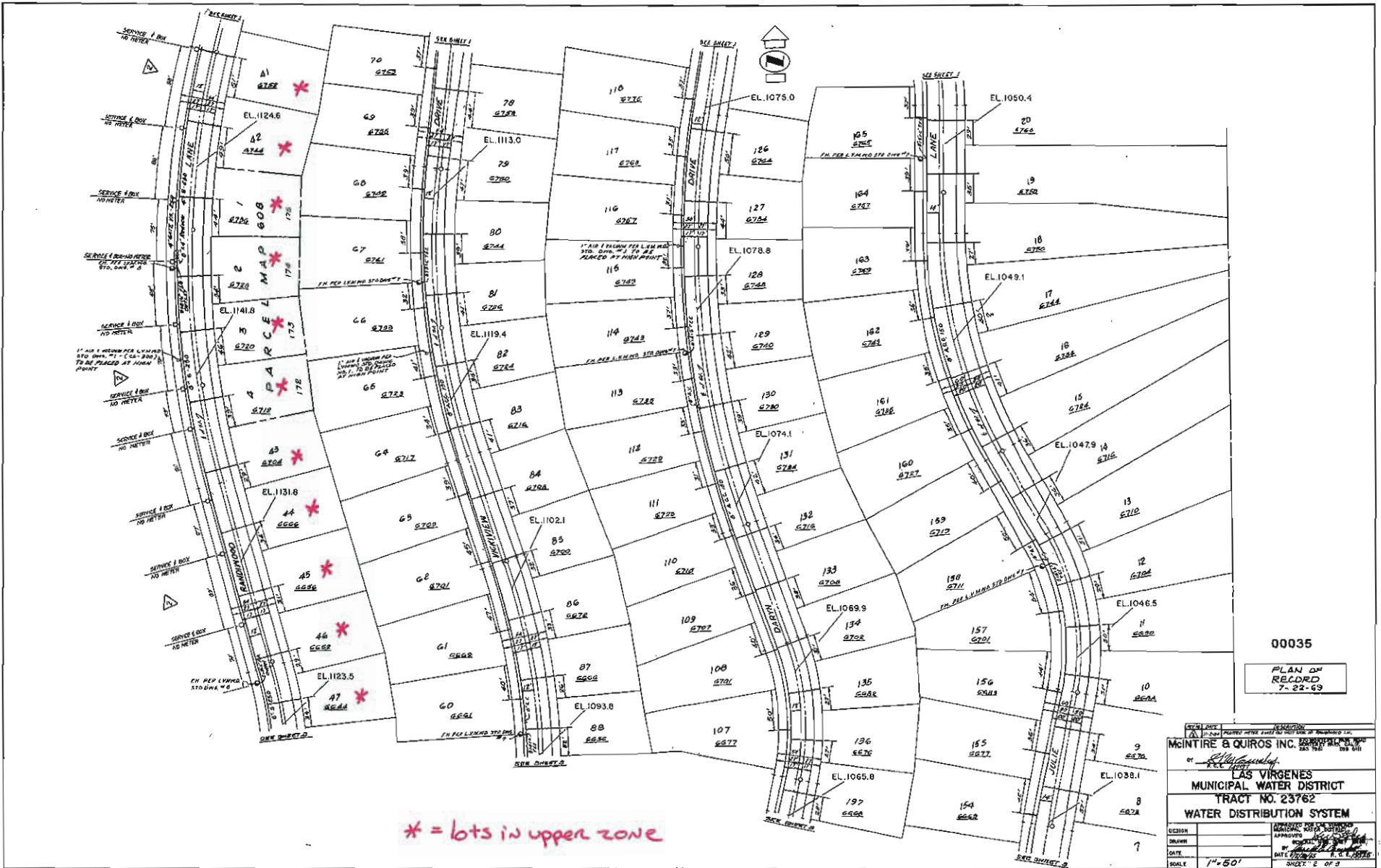
PLAN OF RECORD
7-22-69

McINTIRE & QUIROS INC. ENGINEERS
15100 W. 151ST ST. LOS ANGELES, CALIF. 90047

LAS VIRGENES MUNICIPAL WATER DISTRICT
TRACT NO. 23762
WATER DISTRIBUTION SYSTEM

DESIGNED BY: [Signature]
CHECKED BY: [Signature]
APPROVED BY: [Signature]
DATE: 7/22/69
SCALE: 1" = 60'
SHEET 1 OF 4

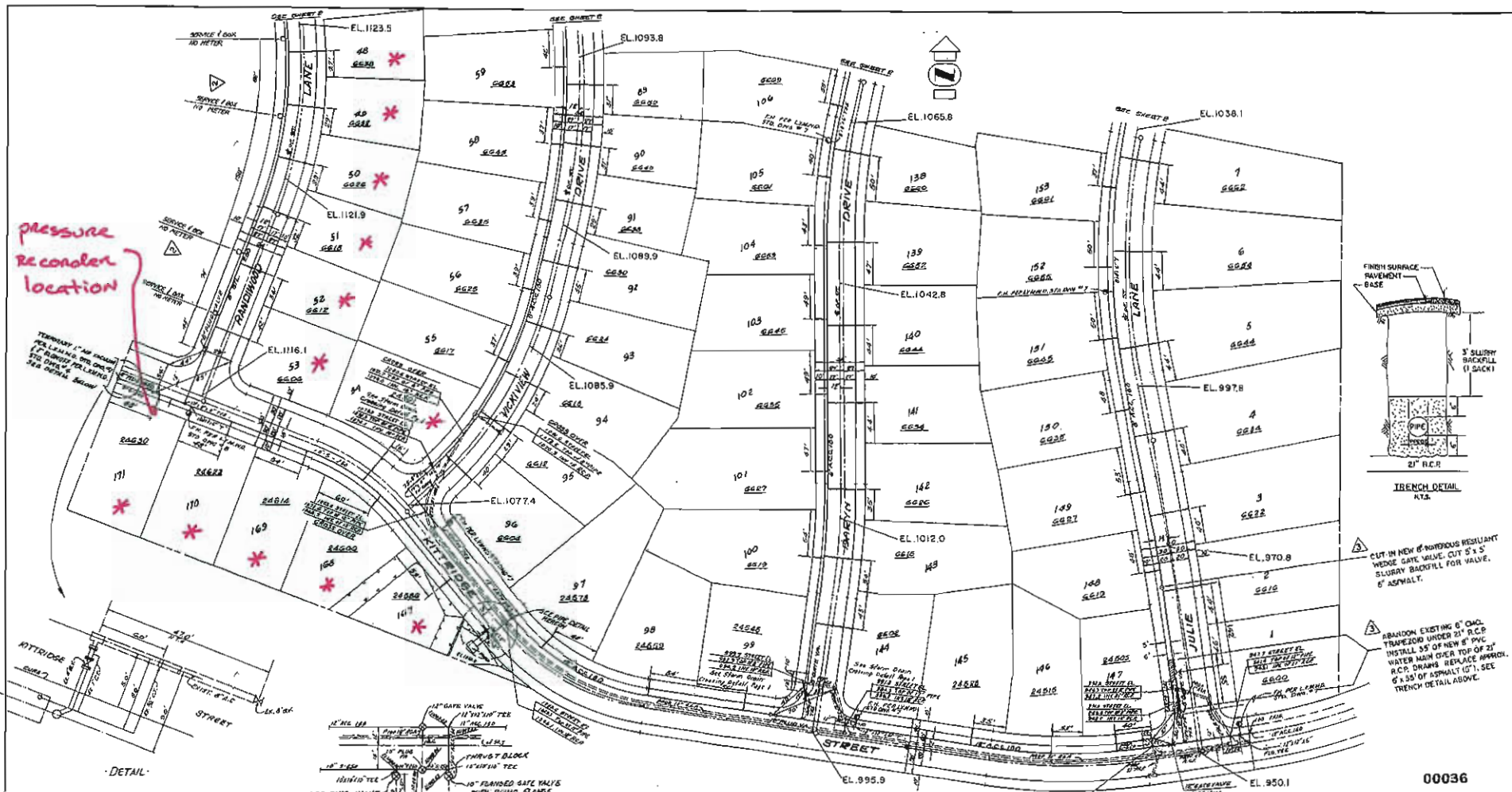
REVISION 0



* = lots in upper zone

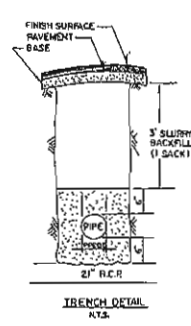
00035
 PLAN 001
 RECORDED
 7-22-69

MCINTIRE & QUIROS INC. ENGINEERS 1000 S. GARDNER ST. OAKLAND, CALIF. 94612	
or <i>[Signature]</i> LAS VIRGENES MUNICIPAL WATER DISTRICT TRACT NO. 23762 WATER DISTRIBUTION SYSTEM	
DESIGN	APPROVED
DRAWN	BY
DATE	DATE
SCALE	SHEET
1" = 50'	2 OF 3



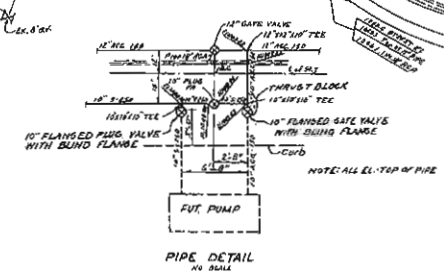
pressure recondenser location

* = lots in upper zone



CUT-IN NEW 6" RADIUS RESILIENT WEDGE GATE VALVE, CUT 2' x 5' SLURRY BACKFILL FOR VALVE, 6" ASPHALT.

ABANDON EXISTING 6" CHC. TRAPEZOID UNDER 24" R.C.P. INSTALL 55' OF NEW 6" PVC WATER MAIN OVER TOP OF 24" R.C.P. DRAWN OVER TOP OF 6" x 55' OF ASPHALT (6"). SEE TRENCH DETAIL ABOVE.



PLAN OF RECORD 7-22-69

00036

MCINTIRE & QUIROS INC. ENGINEERS AND ARCHITECTS 1000 S. GARDEN ST. SUITE 100 LAS VEGAS, NEV. 89102	
LAS VIRGENES MUNICIPAL WATER DISTRICT TRACT NO. 23762 WATER DISTRIBUTION SYSTEM	
DESIGN: [Signature] DRAWN: [Signature] DATE: [Signature]	APPROVED: [Signature] DATE: [Signature]
SHEET NO. 3 OF 3	SCALE: 1" = 50'

REV.	DESCRIPTION	BY	APPROV.	DATE
1	NEW 6" PVC WATER MAIN & 10" CHC. R.C.P. OVER EXISTING 6" CHC. R.C.P. WATER MAIN BREAK 0.39, 0.00			

MINUTES
REGULAR MEETING OF THE
BOARD OF DIRECTORS
LAS VIRGENES MUNICIPAL WATER DISTRICT

October 28, 2008

1 The Board of Directors of Las Virgenes Municipal Water District met in Regular Meeting at 4232 Las Virgenes Road, in Calabasas, California, at 5:00 PM on Tuesday, October 28, 2008

President Bowman called the meeting to order at 5:00 PM

The Pledge of Allegiance to the Flag was given, led by President Bowman.

Secretary Smith called the roll. Those answering present were Directors Bowman, Caspary, Peterson, Renger and Smith.

The Chair declared a quorum present.

2 General Manager Mundy stated there was no amendment to the agenda, but that no report would be provided during Closed Session for item B - Mehta Construction Company v. LVMWD. It was moved by Director Caspary, seconded by Director Renger, and carried unanimously, that the agenda for the Regular Meeting of October 28, 2008 be approved as presented.

3 Citizen of the Month - the Board of Directors presented a Proclamation in Special Recognition of Albert and Mary Parisi for their Water Conservation Efforts.

4 Public Comments – Las Virgenes Unified School District (LVUSD) Superintendent of Schools, Dr. Donald Zimring congratulated the District on its 50th Anniversary and stated kudos be given for the cooperative relationship between the two agencies and their staff members. LVUSD Board of Education Member, Gordon Whitehead was also in attendance.

5 A Director of Resource Conservation and Public Outreach Cho provided an update of the LVMWD Water Shortage Plan.

B General Manager Mundy stated no Legislative Update would be provided.

6 It was moved by Director Peterson, seconded by Director Caspary, and carried unanimously, that Consent Calendar Items 6A-6F be approved as presented.

A List of Demands – 10/28/08. APPROVE

B Investment Report for the Month of September 2008. APPROVE

C Investment Review for the Third Quarter 2008. RECEIVE & FILE

D Award of Bid for Ferric Chloride: Authorize the General Manager to issue a one-year contract, with two one-year renewal options to Miles Chemical for the purchase and delivery of ferric chloride at the cost of \$681.05 per dry ton delivered. APPROVE

E Dardenne Tank Site Lease: Authorize the General Manager to execute the Communications Site Lease agreement. APPROVE

F Main Extension Refund Agreement for Parcel Map 21951: Authorize the General Manager to execute the "Main Extension Refund Agreement" for the offsite pipeline for Parcel Map 21951. APPROVE

7 Miscellaneous Report from Treasurer – None

8 A It was moved by Director Renger, seconded by Director Caspary, and carried unanimously, that the Board accept the proposal from RMC Water and Environment for engineering services to design sewer plug and manhole improvements in an amount not to exceed \$29,946.

B It was moved by President Bowman, seconded by Director Peterson, and carried unanimously, that the Board approve \$175,000 in funding to conduct reconnaissance level studies of recycled water storage sites; and at this time participation will not be requested from the Joint Powers Authority (JPA) as the study was not approved in the fiscal year 2008-09 JPA budget.

C It was moved by Director Caspary, seconded by Director Renger, and carried unanimously, that the Board waive the formal bidding process; and authorize the General Manager to issue a purchase order to General Pump Company in the amount of \$30,686.70 for pump repairs to Westlake Well #1.

9 It was moved by Director Caspary, seconded by Director Smith, and carried unanimously, that the First Quarter Financial Review and Spotlight on LVMWD be received and filed.

10 It was moved by Director Renger, seconded by President Bowman, and carried unanimously, that the Board adopt the Memorandum of Understanding for 2008-09 Integrated Regional Water Management Planning and Implementation requisite for formal participation on the Greater Los Angeles County IRWMP Leadership Committee.

11 A Organization Reports

(1) MWD Representative Peterson provided an update regarding general business of Metropolitan Water District.

(2) Other – None

B Directors' Reports on Outside meetings – Director Renger provided an update on his attendance at the AWA breakfast of October 16, 2008; and Director Smith discussed his attendance at the October 24, 2008, California Special Districts Association-Human Resource Module training.

C Information Items

(1) California Association of Sanitation Agencies – State Water Board Adopts Waste Discharge Permit Fee Increases

(2) Consultant Contracts Given Administrative Approval for the Three Month Period Ending September 30, 2008

(3) National Theatre for Children

D General Manager Reports - General Manager Mundy provided an update regarding general business of the District including the ACWA Fall Conference.

E Director's Comments - None

12 Future Agenda items – None

13 The meeting convened into Closed Session at 6:52 p.m.

Conference with District Counsel – Existing Litigation

A Cooper, et al. v. Calabasas Park Estates, et al.

C Personnel – Negotiations - Employee Compensation & Benefits

14 The meeting reconvened into Open Session at 7:44 p.m. The Chair declared the meeting adjourned at 7:45 p.m.

CHARLES CASPARY, President
Board of Directors
Las Virgenes Municipal Water District

ATTEST:

GLEN PETERSON, Secretary
Board of Directors
Las Virgenes Municipal Water District

(SEAL)

MINUTES
REGULAR MEETING OF THE
BOARD OF DIRECTORS
LAS VIRGENES MUNICIPAL WATER DISTRICT

November 25, 2008

1 The Board of Directors of Las Virgenes Municipal Water District met in Regular Meeting at 4232 Las Virgenes Road, in Calabasas, California, at 5:00 PM on Tuesday, November 25, 2008

President Bowman called the meeting to order at 5:00 PM

The Pledge of Allegiance to the Flag was given, led by President Bowman.

Vice President Renger called the roll. Those answering present were Directors Bowman, Caspary, Peterson and Renger.

Directors not present: Smith – Excused.

The Chair declared a quorum present.

2 Acting General Manager Lippman stated Nitin Patel of Diehl Evans would be providing an overview and presentation of the final audit and requested Agenda Item 8 – Comprehensive Annual Report be heard immediately following Agenda Item 6 - Treasurer. It was moved by Director Renger, seconded by President Bowman, and carried unanimously, that the agenda for the Regular Meeting of November 25, 2008 be approved as amended.

3 Citizen of the Month - the Board of Directors presented David Stiller and Margie Sillman a Proclamation in Special Recognition of Los Angeles Pet Memorial Park upon the 50th Anniversary of Las Virgenes Municipal Water District.

4 Public Comments – No speaker cards were received from the public.

5 It was moved by Director Peterson, seconded by Director Caspary, and carried unanimously, that Consent Calendar Items 5A-5E be approved as presented.

A Minutes: Regular Meetings of 09/23/08 and 10/14/08. APPROVE

B List of Demands – 11/25/08. APPROVE

C Investment Report for the Month of October 2008. APPROVE

D Claim submitted by EH Excavation, Inc. DENY

E Claim submitted by Taslimi Construction Company, Inc. DENY

6 Miscellaneous Report from Treasurer – Director Caspary stated on November 25, 2008, he and Triunfo Sanitation District Director Ron Stark had attended an exit interview with the audit staff of Diehl Evans.

8 Nitin Patel, CPA of Diehl, Evans & Company, LLC presented a report entitled “District and Auditors’ Responsibilities.” It was then moved by Director Renger, seconded by Director Caspary, and carried unanimously, that the LVMWD Comprehensive Annual Financial Report for the Fiscal Year 2007-08 be received and filed.

7 A President Bowman made a motion to amend the Agreement revising “2. Compensation” to read “LVMWD shall bill TRIUNFO monthly for all water delivered in accordance with its then-current potable water temporary rates. Payment for such bills shall be made within 30 days after receipt. Payment will incur a late charge of 1.5% per month of the unpaid balance for over 30 days unless waived

by the LVMWD General Manager for good cause.” It was then moved by Director Peterson, seconded by Director Renger, and carried unanimously, that the Board approve and execute an amended Agreement for Emergency and Maintenance Water Supply between Las Virgenes Municipal Water District and Triunfo Sanitation District for the Oak Park Water Service Emergency Connection.

B A motion was made and moved by Director Caspary, seconded by President Bowman, and carried unanimously, that the Board approve financial participation by the District in the extension of the recycled water system by the City of Westlake Village to the Westlake Village Community Park in an amount not to exceed the engineering estimate plus or minus a 12% contingency.

9 A Organization Reports

(1) MWD Representative Peterson provided an update regarding general business of Metropolitan Water District.

(2) Other – None

B Directors' Reports on Outside meetings – Director Caspary reported on his attendance at the November 20, 2008 AWA Meeting; and President Bowman discussed his attendance at The National Water Resources Association Conference of November 19-21, 2008, which included a report of the Water Supply Task Force.

C Information Items - None

D General Manager Reports – Acting General Manager Lippman provided an update regarding general business of the District including creek avoidance, which ended November 15, 2008.

E Director's Comments – Director Peterson recommended staff review ACWA Sustainability Principles and consider development of our own sustainability principles.

10 Future Agenda Items - Director Caspary requested a report explaining Local Agency Investment Fund (LAIF) investment risks.

11 The meeting convened into Closed Session at 6:06 p.m.

Conference with District Counsel – Existing Litigation

A Cooper, et al. v. Calabasas Park Estates, et al.

B Mehta Construction Company v. LVMWD

C Personnel – Negotiations - Employee Compensation & Benefits

12 The meeting reconvened into Open Session at 6:50 p.m. The Chair declared the meeting adjourned at 6:51 p.m.

CHARLES CASPARY, President
Board of Directors
Las Virgenes Municipal Water District

ATTEST:

GLEN PETERSON, Secretary
Board of Directors
Las Virgenes Municipal Water District

(SEAL)

LAS VIRGENES MUNICIPAL WATER DISTRICT

To: CHARLES CASPARY, TREASURER

Payments for Board Meeting of : January 27, 2009

Upon certification by the Treasurer the checks and wire transfers were correct and supporting documents available, it is recommended the following demands on the various funds be approved and payments authorized.

5B Wells Fargo Bank A/C No. 4806-994448

Checks Nos. 47439 through 47571 were issued in the total amount of \$ 902,228.05

Payments through wire transfers as follows:

No Wires Transfer

Total payments \$ 902,228.05

(Reference is hereby made to these demands on file in the District's Check Register and by this reference the same is incorporated herein and made a part hereof.)

**CHECK LISTING FOR BOARD MEETING
01/27/09**

Company Name	Company No.	Check No. 47439 thru 47487 01/13/09	Check No. 47488 thru 47519 01/20/09	Check No. 47520 thru 47571 01/27/09	Total
		Amount	Amount	Amount	
Potable Water Operations	101	85,179.99	5,366.55	2,037.29	92,583.83
Recycled Water Operations	102	3,603.30			3,603.30
Sanitation Operations	130	8,933.44	2,102.89	61,038.00	72,074.33
Potable Water Construcion	201				0.00
Potable Water Replacement	301		5,500.00		5,500.00
Sanitation Replacement	330			(159.40)	(159.40)
Internal Service	701	61,830.24	43,204.04	30,985.97	136,020.25
Joint Venture Operations	751	187,469.07	7,966.02	113,654.55	309,089.64
Joint Venture Construction	752			9,301.83	9,301.83
Joint Venture Replacement	754			274,214.27	274,214.27
Total Printed		347,016.04	64,139.50	491,072.51	902,228.05
Voided Checks/Payment Stopped:		none			
Total Voids		0.00	0.00	0.00	0.00
Net Total		347,016.04	64,139.50	491,072.51	902,228.05

Batch Number - 192666

Bank Account - 00146807 Cash-General

Payment Number	Date	Address Number	Name	Payment Slub Message	Document Ty	Key Number	Co	Amount	Invoice Number
47520	01/27/09	2317	ACORN NEWSPAPER	DISPLAY ADS-50 WAYS #17.34.2	PV	94554	001 00101	948.00	870105/123108
				Payment Amount				948.00	
47521	01/27/09	16649	AMERICAN PRINCIPLE BANK	RETENTION#7 /SPIESS CONST	PV	94611	001 00754	16,855.34	10379/RTN-7
				Payment Amount				16,855.34	
47522	01/27/09	2397	AQUATIC BIOASSAY & CONSULTING	LAB ANALYSIS-NPDES BIOASSAYS	PV	94555	001 00751	810.00	LVS1281.297
				LAB ANALYSIS-NPDES BIOASSAYS	PV	94556	001 00751	810.00	LVS1281.317
				Payment Amount				1,620.00	
47523	01/27/09	7965	B&B PALLET CO.	125YDS WOOD CHIPS 1"	PV	94557	001 00701	1,302.50	101355
				125YDS WOOD CHIPS 1"	PV	94558	001 00701	1,302.50	101356
				125YDS WOOD CHIPS 1"	PV	94581	001 00701	1,302.50	101357
				125YDS WOOD CHIPS 1"	PV	94583	001 00701	1,302.50	101358
				125YDS WOOD CHIPS 1"	PV	94586	001 00701	1,302.50	101359
				Payment Amount				6,512.50	
47524	01/27/09	2417	B&R TOOL & SUPPLY CO	BROOM-STREET, 16" W/HANDLE	PV	94560	001 00701	39.88	1196384-0002-01
				FREIGHT	PV	94560	002 00701	6.14	1196384-0002-01
				Payment Amount				46.02	
47525	01/27/09	16023	BELL BUILDING MAINTENANCE CO.	12/08 JANITORIAL SRV	PV	94456	001 00701	4,451.50	42096-S
				12/08 JANITORIAL SRV	PV	94456	003 00701	275.50	42096-S
				12/08 JANITORIAL SRV	PV	94456	004 00701	1,102.00	42096-S
				Payment Amount				5,829.00	
47526	01/27/09	3075	BOYLE ENGINEERING CORP	11/29-12/26 8MG/L NITROGEN-CPS	PV	94559	001 00701	4,045.69	62321
				Payment Amount				4,045.69	
47527	01/27/09	16888	BY DESIGN FLOOR COVERING	REPLACE CARPET ON STAIRS	PV	94561	001 00701	729.94	005955
				Payment Amount				729.94	
47528	01/27/09	16626	CALIFORNIA SPECTRA INSTRUMENTATION, INC	PROG PMT#6-L/S PUMP ELEC&CNTRL	PV	94562	001 00701	1,594.00	10293/#6
				10% RETENTION-PMT #6	PD	94563	001 00330	159.40	10293/RTN#6
				Payment Amount				1,434.60	
47529	01/27/09	7749	CITIZENS BUSINESS BANK	RETENTION#8/PASCAL&LUDWIG	PV	94614	001 00754	9,560.00	10378/RTN#8
				Payment Amount				9,560.00	
47530	01/27/09	2536	CITY OF LOS ANGELES	SWG CHG 08/09 O&M 4TH INSTALL	PV	94550	001 00130	36,467.00	74WP090000571/4

Batch Number - 192666
Bank Account - 00146807 Cash-General

Payment Number	Date	Address Number	Name	Payment Slub Message	Document Ty	Key Number	Co	Amount	Invoice Number
				SWG CHG 08/09 CAP 4TH INSTALL	PV	94551	001 00130	24,571.00	74WP090000572/4
				Payment Amount:				61,038.00	
47531	01/27/09	2565	CONEJO AWARDS	ENGRAVE CLOCK-50TH CT MNTH	PV	94580	001 00701	21.45	69585
				Payment Amount				21.45	
47532	01/27/09	2613	DIETERICH POST	DPO-JJ-C24 24# COLOR 42"X300	PV	94564	001 00701	51.67	683216
				FREIGHT	PV	94564	002 00701	1.99	683216
				Payment Amount				53.66	
47533	01/27/09	7178	DISCOUNT SPECIALTY CHEMICALS	RTV SILICONE BLUE, 8 OZ.	PV	94591	001 00701	268.46	00009901
				Payment Amount				268.46	
47534	01/27/09	16303	DUDEK	11/1-11/28 PERMITTING 11/1-11/28 DISTRICT SUPPORT	PV	94567	001 00701	790.89	20085609
				11/1-11/28 SURGE	PV	94568	001 00701	255.59	20085610
				ANALYSIS	PV	94569	001 00701	107.50	20085611
				11/1-11/28	PV	94572	001 00701	8,147.85	20085608
				ANALYSIS/DESIGN				9,301.83	
47535	01/27/09	2654	FAMCON PIPE	ELL-90, 4" PLUG, 2"	PV	94541	001 00701	253.57	114921
				Payment Amount				253.57	
47536	01/27/09	4896	FEDEX KINKO'S INC.	LAMINATE/MOUNT BLNK BR CK	PV	94579	001 00701	34.64	429500003693
				Payment Amount				34.64	
47537	01/27/09	2672	FRUIT GROWERS LABORATORY INC.	LAB ANALYSIS	PV	94535	001 00701	1,780.35	812694C
				LAB ANALYSIS	PV	94536	001 00701	122.10	812697C
				LAB ANALYSIS	PV	94537	001 00701	62.40	812699A
				LAB ANALYSIS	PV	94538	001 00701	184.80	812744C
				LAB ANALYSIS	PV	94539	001 00701	59.40	813248C
				LAB ANALYSIS	PV	94540	001 00701	22.80	813361A
				LAB ANALYSIS	PV	94543	001 00701	2,306.89	812181C
				LAB ANALYSIS	PV	94545	001 00701	3,895.92	812184C
				LAB ANALYSIS	PV	94546	001 00701	1,165.97	812187C
				LAB ANALYSIS	PV	94547	001 00701	13,508.29	812692C
				LAB ANALYSIS	PV	94548	001 00701	976.80	812695C
				LAB ANALYSIS	PV	94549	001 00701	7,752.67	813174C
				Payment Amount				31,838.39	
47538	01/27/09	4971	FUGRO WEST, INC.	11/27-12/31 BNR	PV	94570	001 00701	50.00	3000.020-0000003

Batch Number - 192666
Bank Account - 00146807 Cash-General

Payment Number	Date	Address Number	Name	Payment Stub Message	Document Ty	Key Number	Co	Amount	Invoice Number
PAVEMENT REPR									
		All Payee	6803	FUGRO WEST, INC. P. O. BOX 200375 HOUSTON TX 77216-0375					
				Payment Amount				50.00	
47539	01/27/09	16858	GENERAL PUMP COMPANY	WLK WELL #1 PUMP REPAIR	PV	94571	001 00701	30,686.30	20201
				Payment Amount				30,686.30	
47540	01/27/09	2698	GOLDEN STATE ELEVATOR	1/09 ELEVATOR MAINT	PV	94592	001 00701	283.50	00730402
				Payment Amount				283.50	
47541	01/27/09	2700	GRAFFITI PREVENTION SYSTEMS	GRAFFITI RMVL-OLD	PV	94552	001 00101	75.00	2045
				TOPANGA					
				Payment Amount				75.00	
47542	01/27/09	4525	HARRINGTON INDUSTRIAL PLASTICS INC.	SS SCREEN (20 MESH)	PV	94593	001 00701	99.59	00563060
				FREIGHT	PV	94593	002 00701	13.95	00563060
		Alt Payee	7132	HARRINGTON INDUSTRIAL PLASTICS LLC P. O. BOX 5128 14480 YORBA AVENUE					
				Payment Amount				113.54	
47543	01/27/09	3083	JCI JONES CHEMICALS, INC	SODIUM BISULFITE	PV	94454	001 00701	7,832.40	417643
				4280GALS					
		All Payee	13647	JCI JONES CHEMICALS, INC P.O. BOX 412641 KANSAS CITY MO 64141					
				Payment Amount				7,832.40	
47544	01/27/09	16775	JR'S ENVIRONMENTAL SERVICES	ISO SAMPLER	PV	94595	001 00701	312.50	010209-2
				MAINTENANCE					
				Payment Amount				312.50	
47545	01/27/09	3755	MICROWEST SOFTWARE SYSTEMS INC.	TOOLS MAINT	PV	94629	001 00701	4,400.00	21107
				1/01/09-12/31/09					
				Payment Amount				4,400.00	
47546	01/27/09	2365	MSO TECHNOLOGIES	11/01-11/30/08 CONSULT	PV	94353	001 00701	880.00	2986
				SRV					
				Payment Amount				880.00	
47547	01/27/09	2842	NAPA AUTO PARTS	VEHICLE MAINT#856	PV	94633	001 00701	219.49	296289
				Payment Amount				219.49	
47548	01/27/09	16754	NATURAL SURROUNDINGS	1/09 INTERIOR PLANT	PV	94630	001 00701	235.00	4425
				MAINT					
				Payment Amount				235.00	
47549	01/27/09	2302	OFFICE DEPOT	MISC OFFICE SUPPLIES	PV	94597	001 00701	209.55	457500084-1

Batch Number - 192666
Bank Account - 00146807 Cash-General

Payment Number	Date	Address Number	Name	Payment Stub Message	Document Ty	Key Number	Co	Amount	Invoice Number
				MISC OFFICE SUPPLIES	PV	94598	001 00701	56.93	457827053-1
				Payment Amount				266.48	
47550	01/27/09	16372	OLIN CORPORATION - CHLOR ALKALI	12/26 SODIUM HYPOCHLORITE	PV	94349	001 00701	3,872.36	1106620
				12/30 SODIUM HYPOCHLORITE	PV	94350	001 00701	3,840.95	1107400
				1/6/09 SODIUM HYPOCHLORITE	PV	94628	001 00701	3,759.29	1110476
			All Payee 16373	OLIN CORPORATION - CHLOR ALKALI BANK OF AMERICA P.O. BOX 402766					
				Payment Amount				11,472.60	
47551	01/27/09	16615	OLWYN KINGERY LANDSCAPE DESIGN	1/08/09 HQ DESIGN LANDSCAPE	PV	94641	001 00701	130.00	1203
				Payment Amount				130.00	
47552	01/27/09	2868	OXNARD AUTO ELECTRIC	HONDA GX 120 GASOLINE ENGINE	PV	94625	001 00701	427.59	98867
				Payment Amount				427.59	
47553	01/27/09	2882	PASCAL & LUDWIG CONSTRUCTORS	PRG PMT#8 CENTRATE TRM PROJ	PV	94612	001 00701	95,600.00	10378/#8
				10% RETENTION ON PMT#8D	PV	94613	001 00754	9,560.00-	10378/RTN#8
				Payment Amount				86,040.00	
47554	01/27/09	14548	PATTON BOGGS, LLP	12/08 CONSULT SRV	PV	94616	001 00701	9,507.52	10256330
				Payment Amount				9,507.52	
47555	01/27/09	16756	PENELOPE B. GRENOBLE, INC.	12/15-1/13/09 CONSULT SRV	PV	94615	001 00701	7,410.00	121308
				Payment Amount				7,410.00	
47556	01/27/09	8450	R & B AUTOMATION, INC.	R&R FORCE MAIN 2 PUMP & VALVE	PV	94621	001 00701	4,510.41	10143587
				R&R FORCE MAIN 2 PUMP & VALVE	PV	94621	004 00701	1,800.00	10143587
				Payment Amount				6,310.41	
47557	01/27/09	2907	RED WING SHOE STORE	SAFETY SHOES/2 EMPLOYEES	PV	94340	001 00701	401.09	416000000551
				Payment Amount				401.09	
47558	01/27/09	9354	RM AUTOMATION, INC.	ABSOLUTE PROCESS INSTRUMENTS	PV	94619	001 00701	1,251.37	00008364
				FREIGHT	PV	94619	002 00701	11.97	00008364
				DC INPUT ALARM TRIP	PV	94620	001 00701	539.09	00008365
				FREIGHT	PV	94620	002 00701	10.96	00008365

Batch Number - 192666
Bank Account - 00146807 Cash-General

Payment Number	Date	Address Number	Name	Payment Stub Message	Document Ty	Key Number	Co	Amount	Invoice Number
				Payment Amount				1,813.39	
47559	01/27/09	16859	RMC WATER AND ENVIRONMENT	71~11/28/08 CONSULT SRV	PV	94623	001 00701	5,085.21	8341
				Payment Amount				5,085.21	
47560	01/27/09	11430	SPIESS CONSTRUCTION	PRG PMT#7/BNR PHSE1 P/E12/31	PV	94609	001 00701	168,553.37	10379/#7
				10% RETENTION ON PMT#PD		94610	001 00754	16,855.34-	10379/RTN-7
				Payment Amount				151,698.03	
47561	01/27/09	9505	TIRE MAN AGOURA	40 TIRES DISPOSAL FEE	PV	94643	001 00701	150.00	31522
				Payment Amount				150.00	
47562	01/27/09	2436	VINCE BARNES AUTOMOTIVE	VEHICLE MAINT#802	PV	94634	001 00701	1,053.69	16688
				VEHICLE MAINT#828	PV	94636	001 00701	253.58	016740
				VEHICLE MAINT#845	PV	94637	001 00701	567.01	016747
				VEHICLE MAINT#830	PV	94638	001 00701	261.99	016770
				VEHICLE MAINT#838	PV	94639	001 00701	554.61	016657
				Payment Amount				2,690.88	
47563	01/27/09	2729	VULCAN MATERIALS CO.	12/23 HOT MIX ASPHALT	PV	94332	001 00701	259.95	366322
				1/7/09 HOT MIX ASPHALT	PV	94626	001 00701	164.36	373453
			All Payee 6457	VULCAN MATERIALS COMPANY FILE 55572 LOS ANGELES CA 90074-5572					
				Payment Amount				424.31	
47564	01/27/09	3035	VWR SCIENTIFIC	MISC LAB SUPL	PV	94333	001 00701	1,089.79	36829512
				FREIGHT	PV	94333	006 00701	66.47	36829512
				AMMONIUM CHLORIDE	PV	94335	001 00701	106.09	36841417
				FREIGHT	PV	94335	002 00701	6.97	36841417
				13MM SYRINGE FILTERS	PV	94336	001 00701	362.51	36869434
				FREIGHT	PV	94336	002 00701	3.62	36869434
				ANION EXCHANGE RESIN TYPE II	PV	94352	001 00701	221.61	36811098
				FREIGHT	PV	94352	002 00701	4.55	36811098
			All Payee 3216	VWR INTERNATIONAL, INC P. O. BOX 31001-1257 PASADENA CA 91110-1257					
				Payment Amount				1,861.61	
47565	01/27/09	3109	W. LITTEN	SRV 12/28/08~01/03/09 RANCHO	PV	94351	001 00701	1,998.00	032012667
				SRV 1/9~1/11/09 RANCHO	PV	94617	001 00701	2,257.00	03201268
				Payment Amount				4,255.00	
47566	01/27/09	3047	WESCO DISTRIBUTION, INC.	REBUILD LIGHT FIXTURES	PV	94627	001 00701	1,396.43	608507

Batch Number - 192666
Bank Account - 00146807 Cash-General

Payment Number	Date	Address Number	Name	Payment Stub Message	Document Ty	Number	Key Co	Amount	Invoice Number
				FREIGHT	PV	94627	002 00701	45.00	608507
		Alt Payee	6443	WESCO DISTRIBUTION, INC PO BOX 31001-0465 PASADENA CA 91110-0465					
				Payment Amount				1,441.43	
47567	01/27/09	3048	WEST COAST AIR CONDITIONING	A/C @ BLDG 7	PV	94618	001 00701	117.00	S16525
				Payment Amount				117.00	
47568	01/27/09	3049	WEST COAST WATER SERVICE	09 WTR TRMT MAINT	PV	94622	001 00701	278.00	18673
			INC						
				Payment Amount				278.00	
47569	01/27/09	8510	WORK BOOT WAREHOUSE	SAFETY SHOES/HAND, MIKE	PV	94338	001 00701	209.46	88168
				SAFETY	PV	94339	001 00701	217.74	88170
				SHOES/BOCKELMAN, DUANE					
				SAFETY SHOES/PEDERSON	PV	94624	001 00701	225.00	88414
				COREY					
				Payment Amount				652.20	
47570	01/27/09	16623	WTS, INC.	2/09 DIASTER RECOVERY	PV	94642	001 00701	2,874.00	C0303/001-08
				Payment Amount				2,874.00	
47571	01/27/09	3067	XEROX CORPORATION	WCP123-RLV/PMT#25-DEC	PV	94631	001 00701	286.94	037754900
				8					
				Payment Amount				286.94	
				Total Amount of Payments Written				491,072.51	
				Total Number of Payments Written				52	

Batch Number - 192664
Bank Account - 00146807 Cash-General

Payment Number	Date	Address Number	Name	Payment Stub Message	Document Ty	Key Number	Co	Amount	Invoice Number
47488	01/20/09	16051	ACCURATE TELECOM INC.	12/10 & 11 TELEPHONE REPR	PV	94574	001 00701	240.00	159927
				12/10 TELEPHONE REPR	PV	94575	001 00751	60.00	159928
				12/15 TELEPHONE REPR	PV	94576	001 00751	180.00	159962
				Payment Amount				480.00	
47489	01/20/09	16923	ACE HYDRALIC SALES & SERVICE INC.	AUTO CRANE HYD POWER UNIT	PV	94450	001 00701	1,090.59	5054443
				Payment Amount				1,090.59	
47490	01/20/09	8680	ADS, LLC	12/08 FLOW METERING SRVS	PV	94451	001 00701	667.01	12408.22-1208
				12/08 FLOW METERING SRVS	PV	94451	002 00701	2,001.04	12408.22-1208
				Payment Amount				2,668.05	
47491	01/20/09	16927	AGOURA AUTO SERVICE	SMOG TEST #860	PV	94507	001 00701	60.00	4684
				SMOG TEST #817	PV	94508	001 00701	60.00	4685
				SMOG TEST #806	PV	94509	001 00701	50.00	4687
				SMOG TEST #837	PV	94510	001 00701	50.00	4688
				SMOG TEST #821	PV	94511	001 00701	50.00	4689
				SMOG TEST #922	PV	94512	001 00701	80.31	4693
				SMOG TEST #801	PV	94513	001 00701	50.00	4695
				SMOG TEST #160	PV	94514	001 00701	60.00	4699
				SMOG TEST #322	PV	94515	001 00701	50.00	4701
				SMOG TEST #820	PV	94516	001 00701	50.00	4705
				SMOG TEST #138	PV	94517	001 00701	60.00	4707
				SMOG TEST #814	PV	94518	001 00701	50.00	4722
				SMOG TEST #136	PV	94519	001 00701	112.26	4723
				SMOG TEST #836	PV	94520	001 00701	50.00	4725
				SMOG TEST #857	PV	94521	001 00701	50.00	4726
				SMOG TEST #858	PV	94522	001 00701	50.00	4727
				SMOG TEST #155	PV	94523	001 00701	99.69	4728
				SMOG TEST #838	PV	94524	001 00701	50.00	4733
				SMOG TEST #808	PV	94525	001 00701	50.00	4742
				SMOG TEST #129	PV	94526	001 00701	152.05	4743
				SMOG TEST #715	PV	94527	001 00701	75.30	4746
				SMOG TEST #816	PV	94528	001 00701	60.00	4751
				SMOG TEST #832	PV	94529	001 00701	60.00	4752
				SMOG TEST #854	PV	94530	001 00701	60.00	4759
				SMOG TEST #828	PV	94531	001 00701	60.00	4760
				SMOG TEST #848	PV	94532	001 00701	60.00	4762
				SMOG TEST #845	PV	94533	001 00701	584.00	4770
				SMOG TEST #840	PV	94542	001 00701	62.50	4683

Batch Number - 192664
Bank Account - 00146807 Cash-General

Payment Number	Date	Address Number	Name	Payment Stub Message	Document Ty	Key Number	Co	Amount	Invoice Number
Payment Amount								2,306.11	
47492	01/20/09	2869	AT&T	SRV 01/05--02/04/09	PV	94603	001 00101	27.90	9054/010509
				SRV 12/15--01/14/09	PV	94604	001 00701	663.20	6469/010109
				L.RENGER SRV 1/5--2/4/09	PV	94605	001 00701	32.28	0186/110509
				SRV 12/04/08--01/05/09	PV	94606	001 00101	682.04	0051/010509
				SRV 12/04/08--01/05/09	PV	94606	002 00101	65.34	0051/010509
				SRV 12/04/08--01/05/09	PV	94606	003 00101	800.15	0051/010509
				SRV 12/04/08--01/05/09	PV	94606	004 00101	6,582.01	0051/010509
				SRV 12/04/08--01/05/09	PV	94606	005 00101	1,393.62	0051/010509
				SRV 12/04/08--01/05/09	PV	94606	006 00101	986.23	0051/010509
				SRV 12/04/08--01/05/09	PV	94606	007 00101	464.30	0051/010509
				SRV 12/04/08--01/05/09	PV	94606	008 00101	958.04	0051/010509
				SRV 12/04/08--01/05/09	PV	94606	009 00101	367.81	0051/010509
				SRV 12/04/08--01/05/09	PV	94606	010 00101	3,294.63	0051/010509
				SRV 12/04/08--01/05/09	PV	94606	011 00101	25.56	0051/010509
				SRV 12/04/08--01/05/09	PV	94606	012 00101	25.62	0051/010509
				SRV 12/04/08--01/05/09	PV	94606	013 00101	25.56	0051/010509
				SRV 12/04/08--01/05/09	PV	94606	014 00101	25.56	0051/010509
				SRV 12/04/08--01/05/09	PV	94606	015 00101	25.56	0051/010509
				SRV 12/04/08--01/05/09	PV	94606	016 00101	51.12	0051/010509
				SRV 12/04/08--01/05/09	PV	94606	017 00101	25.56	0051/010509
				SRV 12/04/08--01/05/09	PV	94606	018 00101	25.56	0051/010509
				SRV 12/04/08--01/05/09	PV	94606	019 00101	25.94	0051/010509
				SRV 12/04/08--01/05/09	PV	94606	020 00101	25.56	0051/010509
				SRV 12/04/08--01/05/09	PV	94606	021 00101	25.56	0051/010509
				SRV 12/04/08--01/05/09	PV	94606	022 00101	25.86	0051/010509
				SRV 12/04/08--01/05/09	PV	94606	023 00101	25.56	0051/010509
				SRV 12/04/08--01/05/09	PV	94606	024 00101	25.63	0051/010509
				SRV 12/04/08--01/05/09	PV	94606	025 00101	25.56	0051/010509
				SRV 12/04/08--01/05/09	PV	94606	026 00101	25.56	0051/010509
				SRV 12/04/08--01/05/09	PV	94606	027 00101	17.49	0051/010509
				SRV 12/04/08--01/05/09	PV	94606	028 00101	8.62	0051/010509
Payment Amount								16,778.99	
47493	01/20/09	16253	AT&T MOBILITY	SRV 12/04/08--01/03/09	PV	94553	001 00701	79.22	992789332X01112009
				SRV 12/04/08--01/03/09	PV	94553	002 00701	91.08	992789332X01112009
				SRV 12/04/08--01/03/09	PV	94553	003 00701	28.10	992789332X01112009
				SRV 12/04/08--01/03/09	PV	94553	004 00701	570.45	992789332X01112009
				SRV 12/04/08--01/03/09	PV	94553	005 00701	97.98	992789332X01112009
				SRV 12/04/08--01/03/09	PV	94553	006 00701	55.98	992789332X01112009
				SRV 12/04/08--01/03/09	PV	94553	007 00701	62.49	992789332X01112009
				SRV 12/04/08--01/03/09	PV	94553	008 00701	153.20	992789332X01112009

Batch Number - 192664
Bank Account - 00146807 Cash-General

Payment Number	Date	Address Number	Name	Payment Stub Message	Document Ty	Key Number	Co	Amount	Invoice Number
				SRV 12/04/08~01/03/09	PV	94553 009	00701	70.34	992789332X01112009
				SRV 12/04/08~01/03/09	PV	94553 010	00701	27.99	992789332X01112009
				SRV 12/04/08~01/03/09	PV	94553 011	00701	391.86	992789332X01112009
				SRV 12/04/08~01/03/09	PV	94553 012	00701	293.15	992789332X01112009
				SRV 12/04/08~01/03/09	PV	94553 013	00701	27.99	992789332X01112009
				SRV 12/04/08~01/03/09	PV	94553 014	00701	199.69	992789332X01112009
				SRV 12/04/08~01/03/09	PV	94553 015	00701	14.00	992789332X01112009
				SRV 12/04/08~01/03/09	PV	94553 016	00701	13.99	992789332X01112009
				SRV 12/04/08~01/03/09	PV	94553 017	00701	27.99	992789332X01112009
				SRV 12/04/08~01/03/09	PV	94553 018	00701	27.99	992789332X01112009
				SRV 12/04/08~01/03/09	PV	94553 019	00701	27.99	992789332X01112009
				SRV 12/04/08~01/03/09	PV	94553 020	00701	226.08	992789332X01112009
				SRV 12/04/08~01/03/09	PV	94553 021	00701	62.89	992789332X01112009
				SRV 12/04/08~01/03/09	PV	94553 022	00701	66.30	992789332X01112009
				SRV 12/04/08~01/03/09	PV	94553 023	00701	27.99	992789332X01112009
				SRV 12/04/08~01/03/09	PV	94553 024	00701	27.99	992789332X01112009
				SRV 12/04/08~01/03/09	PV	94553 025	00701	27.99	992789332X01112009
				SRV 12/04/08~01/03/09	PV	94553 026	00701	192.49	992789332X01112009
				Payment Amount				2,893.21	
47494	01/20/09	5405	CALOLYMPIC SAFETY	RESPIRATOR, CARTRIDGE PAIR	PV	94477 001	00701	862.85	049479
				Payment Amount				862.85	
47495	01/20/09	7442	CLARK PLUMBING, HEATING & A/C	12/26 PLUMBING REPR-BLDG 7	PV	94478 001	00701	575.00	127055
				Payment Amount				776.00	
47496	01/20/09	2590	DAILY NEWS	LEGAL ADS-NOTICES	PV	94474 001	00701	584.80	0289956000/1208
				Payment Amount				584.80	
47497	01/20/09	8213	DATAMATIC, LTD.	SV TRAINING MOSAIC SOFTWARE	PV	94600 001	00701	5,500.00	IN-0000010871
			Alt Payee 16479	ALLIED CAPITAL PARTNERS, LP C/O DATAMATIC, LTD. P. O. BOX 676649 DALLAS TX 75267-6649				5,500.00	
47498	01/20/09	2834	DIAL COMMUNICATIONS SERVICES	12/18 SRV RADIO MAINTENANCE CAMERA-HQ	PV	94486 001	00701	1,537.00	24615
				Payment Amount				1,537.00	
47499	01/20/09	11330	DIAL SECURITY	12/18 SRV CALL-FIX	PV	94475 001	00701	274.50	99360

Batch Number - 192664
Bank Account - 00146807 Cash-General

Payment Number	Date	Address Number	Name	Payment Stub Message	Type	Document Number	Key Co	Amount	Invoice Number
				1/09 SECURITY SRV-HQ	PV	94480 001	00701	230.00	100237
				1/09 SECURITY SRV-TAPIA	PV	94481 001	00701	45.00	100238
				1/09 SECURITY SRV-RLV	PV	94482 001	00701	80.00	100239
				1/09 SECURITY SRV-RLV	PV	94483 001	00701	35.00	100240
				FARM					
				1/09 SECURITY SRV-WLK	PV	94484 001	00701	70.00	100241
				1/09 SECURITY SRV-WLK	PV	94485 001	00701	35.00	100242
				P/S					
				Payment Amount				769.50	
47500	01/20/09	15793	FLEMING ENVIRONMENTAL	11/08 DOP-UST SITE	PV	94577 001	00701	90.00	5029
				VISIT					
				Payment Amount				90.00	
47501	01/20/09	6770	G.I. INDUSTRIES	1/09 DISP HQ & SHOP	PV	94491 001	00701	397.18	2457266-0283-3
				1/09 DISP RLV FARM	PV	94492 001	00701	92.49	2457265-0283-5
				1/09 DISP RLV	PV	94493 001	00701	92.49	2457264-0283-8
				1/09 DISP WLK	PV	94496 001	00701	181.73	2276803-0283-2
				1/09 DISP TAPIA	PV	94497 001	00701	306.38	2431660-0283-8
				1/09 DISP	PV	94499 001	00701	113.47	2431661-0283-6
				TAPIA-RAGS/GRIT					
		Alt Payee	6771	G.I. INDUSTRIES					
				P. O. BOX 541065					
				LOS ANGELES CA 90054-1065					
				Payment Amount				1,183.74	
47502	01/20/09	2769	GEORGE KREIDER IV	WELDING SRV-TRLR PRK	PV	94487 001	00701	450.00	432801
				LAULT					
				WELDING SRV-TAPIA	PV	94488 001	00701	450.00	432803
				PRK/SLV ARMY					
				WELDING SRV-PS ON	PV	94489 001	00701	450.00	432805
				AGOURA BS					
				WELDING SRV-MAIN LEAK	PV	94490 001	00701	450.00	432806
				PIUMA RD					
				WELD 2" FIRE SRV-LIBERTY	PV	94578 001	00701	300.00	432804
				CYN RD					
				Payment Amount				2,100.00	
47503	01/20/09	16809	ICTUS CONSULTING, LLC	12/08 LIBRARY/RECORDS	PV	94452 001	00701	2,925.00	LVMWD-090101
				MGMT SRV					
				Payment Amount				2,925.00	
47504	01/20/09	2736	IRON MOUNTAIN RECORDS	1/09 OFF-SITE STORAGE	PV	94601 001	00701	663.27	PE52579
			MANAGEMENT						
				Payment Amount				663.27	

Batch Number - 192664
Bank Account - 00146807 Cash-General

Payment Number	Date	Address Number	Name	Payment Stub Message	Document Ty	Key Number	Co	Amount	Invoice Number
47505	01/20/09	2611	LA DWP	RECTIFIER 11/24~12/26	PV	94607	001 00101	16.88	06901/122608
				RECTIFIER 11/21~12/23	PV	94608	001 00101	18.99	08345/122308
				Payment Amount				35.87	
47506	01/20/09	2839	MOTION INDUSTRIES, INC.	WEAR PLATE#12911	PV	94588	001 00701	117.05	CA22-504808
		All Payee	10317	MOTION INDUSTRIES INC. FILE S7463 LOS ANGELES CA 90074-7463				117.05	
47507	01/20/09	8484	PRAXAIR DISTRIBUTION, INC	COMPRESSED BREATHING AIR	PV	94495	001 00701	93.81	31827334
				HAZ MAT CHARGES	PV	94495	002 00701	36.80	31827334
				12/08 CYLINDER RNTL	PV	94504	001 00101	49.68	31733801
		Alt Payee	8898	PRAXAIR DISTRIBUTION INC. DEPT. LA 21511 PASADENA CA 91185-1511				180.29	
47508	01/20/09	16386	PULSAR, INC.	10 LOOP POWERED FREIGHT	PV	94498	001 00701	1,750.00	81261
					PV	94498	002 00701	28.49	81261
				Payment Amount				1,778.49	
47509	01/20/09	2907	RED WING SHOE STORE	SAFETY SHOES/SARTI, DAVID	PV	94494	001 00701	225.00	131000007173
				Payment Amount				225.00	
47510	01/20/09	6940	SECTRAN SECURITY, INC.	1/09 COURIER SRV	PV	94590	001 00701	281.19	9010391
				Payment Amount				281.19	
47511	01/20/09	10182	SHAMROCK SUPPLY CO.	WRENCH;SOCKET;SCREWDRIV ER	PV	94596	001 00701	217.50	1397246
				SOCKET-SHALLOW.1/2"DRRW E 11/16	PV	94599	001 00701	20.96	1395946
				Payment Amount				238.46	
47512	01/20/09	2948	SMITH PIPE & SUPPLY	MISC HQ LANDSCAPE MAINT HQ LANDSCAPE MAINT	PV	94502	001 00701	78.68	1967582
					PV	94503	001 00701	11.60	1969012
				Payment Amount				90.28	
47513	01/20/09	2958	SOUTHERN CALIFORNIA GAS	DBR P/S 12/3/08~1/05/09 WLK P/S 12/1/08~1/1/09	PV	94585	001 00101	10.85	1200/010509
					PV	94587	001 00101	50.00	9400/10109
				Payment Amount				60.85	
47514	01/20/09	2964	STATE BOARD OF EQUALIZATION	USE TAX QE 12/31/08	PV	94573	001 00701	8,493.59	97-817885/1208
				COMPST/CHEM	PV	94573	002 00701	.41	97-817885/1208
				USE TAX QE 12/31/08 COMPST/CHEM				8,494.00	
				Payment Amount				8,494.00	

Batch Number - 192664
Bank Account - 00146807 Cash-General

Payment Number	Date	Address Number	Name	Payment Stub Message	Document Ty	Key Number	Co	Amount	Invoice Number
47515	01/20/09	3006	UNDERGROUND SERVICE ALER	12/08 NEW TICKETS	PV	94500	001 00701	168.00	1220080369
				Payment Amount				168.00	
47516	01/20/09	3022	VAUGHANS INDUSTRIAL REPAIR	REPR MORSE INBOARD HEAD	PV	94589	001 00701	412.50	013841
				Payment Amount				412.50	
47517	01/20/09	16132	V3	ADVANCE-OUTSOURCE DISB	PV	94602	001 00701	8,000.00	107092
				BILL					
				Payment Amount				8,000.00	
47518	01/20/09	3048	WEST COAST AIR CONDITIONING	12/08 PRV WTR	PV	94465	001 00701	349.65	S16907
				TRMT@BLDG8;7					
				12/08 PRV WTR	PV	94505	001 00701	349.65	S16906
				TRMT@BLDG8;7					
				Payment Amount				699.30	
47519	01/20/09	8514	WEST COAST IRRIGATION	GAL COUPLINGS & LARGE	PV	94501	001 00751	149.11	4597
				NOZZLES					
				Payment Amount				149.11	
				Total Amount of Payments Written				64,139.50	
				Total Number of Payments Written				32	

Batch Number - 192621

Bank Account - 00146807 Cash-General

Payment Number	Date	Address Number	Name	Payment Stub Message	Document Ty	Key Number	Co	Amount	Invoice Number
47439	01/13/09	15625	ABBOT INDUSTRIAL SUPPLIES INTERNATIONAL	4MIL 64" X 38" PLASTIC BAGS	PV	94463	001 00701	438.63	32490
				FREIGHT	PV	94463	002 00701	45.00	32490
				Payment Amount				483.63	
47440	01/13/09	2355	ALFA LAVAL INC.	DC DRIVE UNIT FOR 60 HPPV MOTOR	PV	94448	001 00701	8,660.00	349704
				TECH SUPPORT-DC DR INSTL	PV	94449	001 00701	7,577.50	349708
		Alt Payee	3210	ALFA LAVAL INC. P. O. BOX 8500-52788 PHILADELPHIA PA 19178-2788				16,237.50	
47441	01/13/09	2388	AMETEK, INC.	LEVEL TRANSDUCER & CABLE	PV	94428	001 00701	1,822.94	RG45647001
				FREIGHT	PV	94428	005 00701	16.62	RG45647001
				Payment Amount				1,839.56	
47442	01/13/09	12230	API BASCO/API HEAT TRANSFER INC.	HEAT EXCHANGER (COPPER TUBE)	PV	94425	001 00701	2,556.87	BN039806
				FREIGHT	PV	94425	002 00701	170.09	BN039806
		Alt Payee	12267	API HEAT TRANSFER, INC. P. O. BOX 1493 BUFFALO NY 14240-1493				2,726.96	
47443	01/13/09	2397	AQUATIC BIOASSAY & CONSULTING	LAB ANALYSIS-NPDES BIOASSAYS	PV	94413	001 00701	7,580.00	LVS1281.250
				LAB ANALYSIS-CHLOROPHYLL A	PV	94416	001 00751	350.00	LVS1281.298
				Payment Amount				7,930.00	
47444	01/13/09	16224	ASBURY ENVIRONMENTAL SERVICES	REMOV USED OIL/GAS FILTERS	PV	94462	001 00701	64.00	130251095
				Payment Amount				64.00	
47445	01/13/09	2869	AT&T	SRV 12/20/08~1/19/09	PV	94467	001 00101	24.53	2150/122008
				SRV 12/23/08~1/22/09	PV	94468	001 00101	24.51	2430/122308
				SRV 12/23/08~1/22/09	PV	94469	001 00101	24.51	0210/122308
				SRV 12/23/08~1/22/09	PV	94470	001 00101	23.70	7426/122308
				SRV 12/23/08~1/22/09	PV	94471	001 00101	24.51	5388/122308
				SRV 12/25/08~1/24/09	PV	94472	001 00101	22.41	0192/122508
				G.PETERSON'S 12/23~1/22/09	PV	94473	001 00701	25.74	1984/122308
				Payment Amount				169.91	

Batch Number - 192621

Bank Account - 00146807 Cash-General

Payment Number	Date	Address Number	Name	Payment Stub Message	Document Ty	Key Number	Co	Amount	Invoice Number
47446	01/13/09	2407	ATLAS TOWING	TOW #869 101 TO VINCE BARNES	PV	94312	001 00701	240.00	26931
				TOW #869 VINCE BARNES TO FORD	PV	94313	001 00701	145.00	26927
				Payment Amount				385.00	
47447	01/13/09	7965	B&B PALLET CO.	125YDS WOOD CHIPS 1"	PV	94342	001 00701	1,302.50	101351
				125YDS WOOD CHIPS 1"	PV	94343	001 00701	1,302.50	101352
				125YDS WOOD CHIPS 1"	PV	94354	001 00701	1,302.50	101353
				125YDS WOOD CHIPS 1"	PV	94355	001 00701	1,302.50	101354
				Payment Amount				5,210.00	
47448	01/13/09	3105	BAKERCORP	REMOVE OLD CARBON ANODE DISPOSAL	PV	94464	001 00701	12,855.44	1227145-001
				Payment Amount				12,855.44	
47449	01/13/09	8091	BROWN AND CALDWELL	JOB AD-MAINT MECH I/II	PV	94316	001 00701	250.00	17643
				Payment Amount				250.00	
47450	01/13/09	2485	CALABASAS RADIATOR	R&R RADIATOR/SRV #820	PV	94432	001 00701	361.48	121108
				Payment Amount				361.48	
47451	01/13/09	5376	CALIFORNIA ELECTRIC SUPPLY	MAND TWLS,BARE RING TERM	PV	94330	001 00701	168.61	8997-681028
				13W LAMPS-RLV	PV	94377	001 00701	69.24	8997-681591
				500 BELDN 88770	PV	94378	001 00701	826.35	8997-683158
				GUAX COND BDY&CVR,CORNW	PV	94379	001 00701	93.56	8997-682627
				FUSE 1AMP,GALV NIP	PV	94380	001 00701	77.19	8997-683282
				1/2XCL					
		Alt Payee	5451 CALIFORNIA ELECTRIC SUPPLY P.O. BOX 14196 ORANGE CA 92863						
				Payment Amount				1,234.95	
47452	01/13/09	2513	CAPCO ANALYTICAL SERVICES	S&B ANALYSIS-FUEL GAS/SULFUR	PV	94319	001 00701	396.25	083339
				Payment Amount				396.25	
47453	01/13/09	8106	CINTAS FIRST AID & SAFETY	REPL FIRST AID CAB-WLK	PV	94320	001 00701	209.70	0168342080
				REPL FIRST AID CAB-OPS	PV	94321	001 00701	174.80	0168339008
				Payment Amount				384.50	
47454	01/13/09	4536	CITRUS COLLEGE	6)REG-WTR AWARENESS 4/15	PV	94457	001 00701	300.00	011309
				Payment Amount				300.00	
47455	01/13/09	15517	COLLINS EQUIPMENT REPAIR	LABOR ON #851 & #710	PV	94324	001 00701	292.00	629
				Payment Amount				292.00	
47456	01/13/09	2577	COURTESY CHEVROLET	CHEVY FILTERS	PV	94322	001 00701	76.38	579308

Batch Number - 192621
Bank Account - 00146807 Cash-General

Payment Number	Date	Address Number	Name	Payment Stub Message	Document Ty	Key Number	Co	Amount	Invoice Number
				BELT KIT #866	PV	94323	001 00701	110.40	579403
				Payment Amount				186.78	
47457	01/13/09	16280	DAVID'S PAINT & TILE	REPLC BROKEN TILES-EXTPV STEPS	PV	94325	001 00701	4,750.00	1721
				Payment Amount				4,750.00	
47458	01/13/09	11330	DIAL SECURITY	REINSL 3 IP ROUTER/CHN&V IP	PV	94314	001 00701	317.00	99262
				Payment Amount				317.00	
47459	01/13/09	10124	DIEHL, EVANS & COMPANY, LLP	FINAL PMT-AUDIT FY 07-08 LV	PV	94317	001 00701	15,390.00	1021195
				FINAL PMT-AUDIT FY 07-08 JPA	PV	94318	001 00751	1,265.00	1021196
				Payment Amount				16,655.00	
47460	01/13/09	7257	DIRECTV, INC.	1/09-1/10 OFF INFO/LCL CHNL	PV	94459	001 00101	502.88	915301959
				Payment Amount				502.88	
47461	01/13/09	8173	EXCEL PRINT RESOURCES	DIST FRONT/BACK RPRT CVRS	PV	94435	001 00701	741.51	1384
				FREIGHT	PV	94435	003 00701	25.00	1384
				Payment Amount				766.51	
47462	01/13/09	8250	FALCONE WEST VALLEY ROOFERS, INC.	12/23 REPR OPEN DRAIN-WLK	PV	94315	001 00101	127.00	122608/WLK FP
				Payment Amount				127.00	
47463	01/13/09	2655	FERGUSON ENTERPRISES	MISC INV PARTS	PV	94311	001 00701	556.78	0298445
		Alt Payee	3207	FERGUSON ENTERPRISES, INC FERGUSON #602 FILE 56809					
				Payment Amount				556.78	
47464	01/13/09	16924	FLOW NETWORK	0-26 GPM FLOW METER W/SWITCH	PV	94438	001 00701	350.00	20772
				FREIGHT	PV	94438	002 00701	11.85	20772
				Payment Amount				361.85	
47465	01/13/09	6770	G.I. INDUSTRIES	12/1-15 DISP 10YD ROLLOFF-TAPI	PV	94439	001 00701	353.85	2430664-0283-1
				12/1-15 DISP 10YD ROLLOFF-SHOP	PV	94440	001 00701	390.72	2451726-0283-2
		Alt Payee	6771	G.I. INDUSTRIES P. O. BOX 541065 LOS ANGELES CA 90054-1065					
				Payment Amount				744.57	

Batch Number - 192621
Bank Account - 00146807 Cash-General

Payment Number	Date	Address Number	Name	Payment Stub Message	Document Ty	Key Number	Co	Amount	Invoice Number
47466	01/13/09	16858	GENERAL PUMP COMPANY	WLK WELL #1 TESTING-VIDEO	PV	94447	001 00701	3,840.00	20096
				Payment Amount				3,840.00	
47467	01/13/09	3525	GILBERT METAL PRODUCTS	REFURBISH 48" TANK TURBINES	PV	94326	001 00701	595.38	4017
				Payment Amount				595.38	
47468	01/13/09	4525	HARRINGTON INDUSTRIAL PLASTICS INC.	SS SCREEN(20 MESH)FORPV STRAINER	PV	94356	001 00701	149.39	00562691
				FREIGHT	PV	94356	002 00701	16.86	00562691
		Alt Payee	7132	HARRINGTON INDUSTRIAL PLASTICS LLC P. O. BOX 5128 14480 YORBA AVENUE				Payment Amount	
								166.25	
47469	01/13/09	6439	HIDDEN HILLS COMMUNITY ASSOCIATION	EXCAVATION PRMT-5418 RND MEADW	PV	94405	001 00101	190.00	PRMT#773
				Payment Amount				190.00	
47470	01/13/09	4144	INTERSTATE BATTERY SYSTEMS	BATTERIES-#710,863,322, 715,848	PV	94441	001 00701	656.35	20079989
				Payment Amount				656.35	
47471	01/13/09	2746	JOHN LISEE PUMPS INC	AURORA PUMP REPAIR KIPS SHIPPING	PV	94442	001 00701	3,078.63	78034
					PV	94442	002 00701	32.88	78034
				Payment Amount				3,111.51	
47472	01/13/09	2752	KAMAN INDUSTRIAL TECHNOLOGIES	BEARING AND SEAL TRAINING	PV	94328	001 00701	2,706.25	P313448
				Payment Amount				2,706.25	
47473	01/13/09	2759	KEMP FORD	REPR #869 FUEL MODULEPV	PV	94329	001 00701	322.02	105978
				Payment Amount				322.02	
47474	01/13/09	3164	LEMIEUX & O'NEILL	RETAINER - DEC '08	PV	94406	001 00701	6,000.00	140-999M/123108
				PROFESSIONAL SRVS-DE@V '08	PV	94407	001 00701	7,382.00	140-M/123108
				PROFESSIONAL SRVS-DE@V '08	PV	94407	002 00701	3,830.00	140-M/123108
				PROFESSIONAL SRVS-DE@V '08	PV	94407	003 00701	3,179.50	140-M/123108
				PROFESSIONAL SRVS-DE@V '08	PV	94407	004 00701	3,179.50	140-M/123108
				PROFESSIONAL SRVS-DE@V '08	PV	94407	005 00701	330.00	140-M/123108
				Payment Amount				23,901.00	
47475	01/13/09	7262	LUE DRAIN CLEANING &	BACKFLOW TESTING ANDPV	PV	94443	001 00701	4,730.00	07495

Batch Number - 192621
Bank Account - 00146807 Cash-General

Payment Number	Date	Address Number	Name	Payment Stub Message	Document Ty	Key Number	Co	Amount	Invoice Number
			PLUMBING SERVICE	REPAIR					
				BACKFLOW TESTING ANDPV	94443	002	00701	3,070.00	07495
				REPAIR					
				Payment Amount				7,800.00	
47476	01/13/09	9110	MATHEWS MACHINERY, INC.	REPR LOADER #L70C@RLPV	94348	001	00701	271.36	IC72055
				Payment Amount				271.36	
47477	01/13/09	2302	OFFICE DEPOT	MISC OFFICE SUPPLIES	PV	94331	001 00701	125.36	451320649-1
				MISC OFFICE SUPPLIES	PV	94334	001 00701	127.30	451435922-1
				MISC OFFICE SUPPLIES	PV	94444	001 00701	1,438.56	456645438-1
				MISC OFFICE SUPPLIES	PV	94445	001 00701	109.27	456090947-1
				10% CR-CALENDAR ORDERD	PV	94446	001 00701	150.00-	457578647-1
				Payment Amount				1,650.49	
47478	01/13/09	16022	ROLLS SCAFFOLD & EQUIPMENT INC	SCAFFOLD RNTL	PV	94347	001 00130	216.07	602508851C
				11/20~12/17					
				Payment Amount				216.07	
47479	01/13/09	16056	SAFE-ENTRY TECHNICAL, INC.	METER CALIBRATION	PV	94344	001 00701	164.11	967
				H2S;NH3-N					
				Payment Amount				164.11	
47480	01/13/09	2957	SOUTHERN CALIFORNIA EDISON	CONDUIT P/S 11/20~12/19	PV	94357	001 00101	2,273.50	1313-55/121908
				LATIGO CYN 11/19~12/18	PV	94358	001 00101	16.39	4368-30/121808
				SADDLETREE 11/12~12/13	PV	94359	001 00101	514.79	4368-32/121308
				RECTIFIER 11/19~12/18	PV	94360	001 00101	16.39	4368-34/121808
				HQ/OPNS 11/17~12/17	PV	94361	001 00701	1,436.53	4368-35/121708
				HQ/OPNS 11/17~12/17	PV	94362	001 00701	792.03	4368-36/121708
				CONDUIT P/S 11/20~12/19	PV	94363	001 00101	20.39	4368-38/121908
				RECTIFIER 11/19~12/22	PV	94364	001 00101	18.65	4368-39/122208
				WOOLSEY 11/5~12/5	PV	94365	001 00101	18.55	4368-40/120508
				BOX CYN 10/28~12/29	PV	94366	001 00101	14.40	4368-41/122908
				L/S#2 SEWER 11/14~12/17	PV	94367	001 00130	3,656.69	4368-42/121708
				WARNER P/S 12/1~12/29	PV	94368	001 00101	3,207.30	4368-44/122908
				SEMINOLE 12/2~12/31	PV	94369	001 00101	55.79	4368-47/123108
				CORNELL P/S 12/1~12/30	PV	94370	001 00101	13,996.68	4368-49/123008
				WLK PLNT 11/12~12/13	PV	94371	001 00101	1,334.44	4368-52/121308
				MALIBU SYPHN	PV	94372	001 00751	18.08	4368-53/121608
				11/14~12/16					
				JBR P/S 11/21~12/23	PV	94373	001 00101	128.52	4368-54/122308
				STUNT RD 11/8~12/10	PV	94374	001 00101	3,405.49	4368-55/121008
				TAPIA PLNT 12/1~12/30	PV	94375	001 00751	64,784.81	4368-56/123008
				CORNELL/ARGOS	PV	94376	001 00101	52.05	4368-57/122208
				11/20~12/22					
				3 SPNG 11/12~12/12	PV	94382	001 00101	798.85	4368-58/121208

Batch Number - 192621

Bank Account - 00146807 Cash-General

Payment Number	Date	Address Number	Name	Payment Stub Message	Ty	Document Number	Key Co	Amount	Invoice Number
				KIMBERLY 11/21~12/23	PV	94383	001 00101	727.83	4368-59/122308
				RLV CNTRL 11/17~12/19	PV	94384	001 00751	908.72	4368-60/121908
				CENTRAL CYN 11/17~12/17	PV	94385	001 00751	730.07	4368-61/121708
				NO.CYN IRRGTN 11/17~12/17	PV	94386	001 00751	271.70	4368-62/121708
				DARDENNE 11/18~12/18	PV	94387	001 00101	667.17	4368-64/121808
				MULWOOD 11/17~12/18	PV	94388	001 00101	2,848.35	4368-65/121808
				EQUESTRIAN 11/12~12/13	PV	94389	001 00101	43.88	4368-67/121308
				MTN GATE 11/18~12/18	PV	94390	001 00101	441.54	6316-49/121808
				MORRISON 11/24~12/24	PV	94391	001 00101	24.24	8383-31/122408
				AGOURA 11/21~12/23	PV	94392	001 00101	780.62	2515-69/122308
				WLK PR STN 12/1~12/31	PV	94393	001 00101	16.95	2683-53/123108
				McCOY P/S 11/18~12/18	PV	94394	001 00101	5,706.61	2782-42/121808
				CLBS-LV2 12/1~12/30	PV	94395	001 00101	2,715.53	3395-85/123008
				WLK P/S 12/1~12/30	PV	94396	001 00101	627.50	3977-87/123008
				OPNS BLDG 11/20~12/22	PV	94397	001 00701	1,644.61	3977-89/122208
				L/S#1 SEWER 11/19~12/19	PV	94398	001 00130	5,060.68	3977-91/121908
				SEMINOLE 11/14~12/16	PV	94399	001 00101	10,776.74	7025-53/121608
				COLD CYN 11/18~12/18	PV	94400	001 00101	3,606.79	7651-90/121808
				JED SMITH 11/19~12/19	PV	94401	001 00101	3,514.60	6723-62/121908
				RLV CMPST 11/21~12/23	PV	94402	001 00751	23,976.76	5165-46/122308
				CORDILLERA 11/17~12/17	PV	94403	001 00751	1,153.39	8528-86/121708
				WLK-FOXFIELD 11/13~12/15	PV	94404	001 00751	90.51	7717-31/121508
				ANODE WELL 11/14~12/17	PV	94408	001 00101	18.65	4966-99/121708
				OAKRIDGE 11/17~12/17	PV	94409	001 00101	427.48	2165-89/121708
				RLV FARM 11/20~12/22	PV	94410	001 00751	190.85	5716-44/122208
				PK BELMONT 11/14~12/16	PV	94411	001 00701	50.26	9284-79/121608
				HQ PRKG 11/17~12/17	PV	94412	001 00701	739.12	6149-28/121708
				HQ CHILLER 11/17~12/17	PV	94414	001 00701	1,680.47	6534-73/121708
				HQ MAIN 11/17~12/17	PV	94415	001 00701	3,898.26	6634-32/121708
				RECTIFIER 11/17~12/17	PV	94417	001 00101	16.95	2219-92/121708
				005 DISCHRG 11/18~12/27	PV	94419	001 00751	26.85	5375-87/122708
				MULWOOD 11/17~12/17	PV	94420	001 00101	19.12	9781-34/121708
				MORRISON 11/24~12/24	PV	94421	001 00751	140.83	7173-76/122408
				UPR TWIN LAKES 12/2~12/31	PV	94422	001 00101	19.18	5155-72/123108
				UPR TWIN LAKES 10/30~12/2	PV	94423	001 00101	986.22	5155-97/120208
				UPR TWIN LAKES 12/2~12/31	PV	94424	001 00101	748.50	5155-97/123108

Batch Number - 192621

Bank Account - 00146807 Cash-General

Payment Number	Date	Address Number	Name	Payment Stub Message	Document Ty	Key Number	Co	Amount	Invoice Number
				PKWY CLBS 11/17-12/18	PV	94427	001 00102	523.89	9819-53/121808
				UPR/LWR OAKS 11/17-12/17	PV	94429	001 00101	34.13	9819-99/121708
				LOWER OAKS 10/20-11/17	PV	94430	001 00101	1,139.35	3747-36/111708
				LOWER OAKS 11/17-12/18	PV	94431	001 00101	3,526.55	3747-36/121808
				RANCHVIEW 11/20-12/22	PV	94433	001 00101	396.56	8169-85/122208
				RWPS PMP 11/17-12/17	PV	94434	001 00751	36,437.48	4500-42/121708
				TAPIA PLNT 12/1/08-11/09	PV	94436	001 00751	2,296.91	8839-77/010109
				UPR/LWR OAKS 11/17-12/17	PV	94437	001 00101	2,327.29	8169-54/121708
				UPR OAK/PKWY CLBS 11/17-12/18	PV	94461	001 00101	9.41	9819-04121808
				UPR OAK/PKWY CLBS 11/17-12/18	PV	94461	002 00101	9.41	9819-04121808
				Payment Amount				218,558.83	
47481	01/13/09	8212 STANSBERY'S WELDING		SAFETY STAIRWAY @ CHERRY TANKS	PV	94345	001 00701	3,000.00	1559
				REPAIR AGITATOR LOCKING PIN	PV	94346	001 00701	1,200.00	1560
				Payment Amount				4,200.00	
47482	01/13/09	2964 STATE BOARD OF EQUALIZATION		01/08-12/08 UG STORAGE TNK FEE	PV	94458	001 00701	121.60	44-008690/1208
				Payment Amount				121.60	
47483	01/13/09	4595 THE COPY DEPARTMENT		12 SETS CONTR DOCS DELIVERY	PV	94460	001 00701	85.18	1478229
					PV	94460	006 00701	3.00	1478229
				Payment Amount				88.18	
47484	01/13/09	2436 VINCE BARNES AUTOMOTIVE		VEHICLE MAINT#868	PV	94308	001 00701	190.45	016727
				VEHICLE MAINT#838	PV	94309	001 00701	135.32	016730
				VEHICLE MAINT#853	PV	94310	001 00701	260.15	016738
				Payment Amount				585.92	
47485	01/13/09	3048 WEST COAST AIR CONDITIONING		REPR@SERVER ROOM	PV	94305	001 00701	165.50	S15558
				Payment Amount				165.50	
47486	01/13/09	8510 WORK BOOT WAREHOUSE		SAFETY SHOES/MEREDITH, JON	PV	94266	001 00701	204.05	21494
				Payment Amount				204.05	
47487	01/13/09	3067 XEROX CORPORATION		WCP45/PMT#57-NOV'08	PV	94301	001 00701	338.37	037135907
				D250COLOR/PMT#31-NOV'08	PV	94302	001 00701	782.71	037135903
				D250EFI/PMT#31-NOV'08	PV	94303	001 00701	238.58	037135904
				COPIER 440AS MAINT-NOV'08	PV	94304	001 00701	51.96	037135905

R04576

Las Virgenes Municipal Water
A/P Auto Payment Register

01/13/09 8:37:11

Page - 8

Batch Number - 192621

Bank Account - 00146807 Cash-General

<u>Payment</u> <u>Number</u>	<u>Date</u>	<u>Address</u> <u>Number</u>	<u>Name</u>	<u>Payment Stub</u> <u>Message</u>	<u>Document</u> <u>Ty</u>	<u>Number</u>	<u>Key</u> <u>Co</u>	<u>Amount</u>	<u>Invoice</u> <u>Number</u>
				Payment Amount				1,411.62	
				Total Amount of Payments Written				347,016.04	
				Total Number of Payments Written				49	

Date: January 14, 2009
 To: John R. Mundy, General Manager
 From: Finance and Administration Department
 Subject: Investment Report for the Month of December 2008

Summary of Investments

Investments Maturing Within Six Months:

Disc./Cpn Rate	Yield To Maturity	Investment Type	Date Invested	Date Matures	Book Value	Par Value	Market Value	Market Value Source
3.250%	3.250%	FHLB-Bullet	09/29/08	01/13/09	1,000,000	1,000,000	1,000,940	Custodian
3.250%	3.250%	FHLB-Bullet	10/02/08	04/02/09	1,000,000	1,000,000	1,007,813	Custodian
		Sub-Total			2,000,000	2,000,000	2,008,753	

Investments Maturing After Six Months:

5.000%	5.000%	FHLB-Callable Coupon	02/09/06	02/09/11	1,000,000	1,000,000	1,004,380	Custodian
5.250%	5.250%	FHLB-Callable Coupon	03/24/06	03/24/11	1,000,000	1,000,000	1,010,310	Custodian
5.340%	5.340%	FHLB-Callable Coupon	04/27/06	04/27/11	1,000,000	1,000,000	1,014,690	Custodian
5.600%	5.600%	FHLB-Callable Coupon	06/30/06	06/30/11	1,000,000	1,000,000	1,023,750	Custodian
5.750%	5.750%	FHLMC-Callable Coupon	07/20/06	07/20/11	1,000,000	1,000,000	1,025,970	Custodian
5.500%	5.500%	FHLB-Callable Coupon	08/18/06	08/18/11	1,000,000	1,000,000	1,005,940	Custodian
5.150%	5.130%	FFCB-Coupon Note	09/06/06	12/06/10	1,000,820	1,000,000	1,074,690	Custodian
5.320%	5.320%	FHLB-Callable Coupon	09/08/06	09/08/11	1,000,000	1,000,000	1,029,690	Custodian
5.300%	5.300%	FHLB-Callable Coupon	09/28/06	09/28/11	1,000,000	1,000,000	1,032,500	Custodian
5.300%	5.300%	FHLB-Callable Coupon	11/09/06	11/09/11	1,000,000	1,000,000	1,036,880	Custodian
5.000%	5.000%	FHLMC-Callable Coupon	12/21/06	12/21/11	1,000,000	1,000,000	1,037,780	Custodian
5.200%	5.200%	FHLB-Callable Coupon	01/17/07	01/17/12	1,000,000	1,000,000	1,022,810	Custodian
5.400%	5.400%	FHLB-Callable Coupon	06/01/07	06/01/12	1,000,000	1,000,000	1,018,130	Custodian
5.625%	5.625%	FHLB-Callable Coupon	06/21/07	06/21/12	1,000,000	1,000,000	1,061,560	Custodian
5.400%	5.400%	FHLB-Callable Coupon	08/24/07	08/24/11	1,000,000	1,000,000	1,028,750	Custodian
5.000%	5.000%	FFCB-Callable Coupon	09/28/07	09/28/12	1,000,000	1,000,000	1,027,500	Custodian
5.125%	5.125%	FNMA-Callable Coupon	11/05/07	11/05/12	1,000,000	1,000,000	1,003,440	Custodian
4.450%	4.450%	FHLB-Callable Coupon	02/12/08	02/12/13	1,000,000	1,000,000	1,003,750	Custodian
4.000%	4.000%	FHLB-Callable Coupon	02/15/08	02/15/12	1,000,000	1,000,000	1,003,750	Custodian
4.000%	4.000%	FHLMC-Callable Coupon	09/16/08	09/16/11	1,000,000	1,000,000	1,005,310	Custodian
3.600%	3.600%	FHLB-Callable Coupon	09/17/08	04/01/11	1,000,000	1,000,000	1,000,310	Custodian
3.750%	3.750%	FFCB-Callable Coupon	09/29/08	09/29/11	1,000,000	1,000,000	1,019,060	Custodian
4.375%	4.375%	FNMA-Callable Coupon	10/07/08	10/07/11	1,000,000	1,000,000	1,000,630	Custodian
4.000%	4.000%	FNMA-Callable Coupon	10/10/08	10/08/10	1,000,000	1,000,000	1,000,310	Custodian
3.500%	3.695%	FHLB-Callable Coupon	10/14/08	02/05/10	997,500	1,000,000	1,001,560	Custodian
4.250%	4.250%	FFCB-Callable Coupon	10/15/08	10/15/13	1,000,000	1,000,000	1,028,130	Custodian
4.150%	4.150%	FHLB-Callable Coupon	10/16/08	07/16/12	1,000,000	1,000,000	1,013,750	Custodian
4.250%	4.250%	FHLB-Callable Coupon	10/17/08	07/17/12	1,000,000	1,000,000	1,014,690	Custodian

SC

LVMWD Investment Report for the Month Ending December 31, 2008

Disc./Cpn Rate	Yield To Maturity	Investment Type	Date Invested	Date Matures	Book Value	Par Value	Market Value	Market Value Source
Investments Maturing After Six Months (continued):								
4.000%	4.000%	FHLB-Callable Coupon	10/21/08	10/21/10	1,000,000	1,000,000	1,001,560	Custodian
4.500%	4.500%	FHLB-Callable Coupon	10/21/08	10/21/11	1,000,000	1,000,000	1,001,560	Custodian
4.050%	4.050%	FHLB-Callable Coupon	10/22/08	10/22/10	1,000,000	1,000,000	1,001,560	Custodian
3.250%	3.623%	FHLMC-Callable Coupon	10/24/08	03/10/10	995,000	1,000,000	1,002,900	Custodian
4.000%	4.000%	FHLMC-Callable Coupon	10/24/08	07/28/11	1,000,000	1,000,000	1,015,600	Custodian
4.000%	4.000%	FHLB-Callable Coupon	10/27/08	04/27/12	1,000,000	1,000,000	1,023,440	Custodian
4.250%	4.268%	FNMA-Callable Coupon	10/29/08	06/24/11	999,500	1,000,000	1,016,560	Custodian
3.220%	3.220%	FHLB-Bullet	10/30/08	10/30/09	1,000,000	1,000,000	1,021,560	Custodian
4.000%	4.000%	FFCB-Callable Coupon	11/03/08	05/03/12	1,000,000	1,000,000	1,023,130	Custodian
4.000%	4.000%	FNMA-Callable Coupon	11/10/08	08/10/12	1,000,000	1,000,000	1,002,810	Custodian
3.375%	3.375%	FFCB-Callable Coupon	11/18/08	11/18/11	1,000,000	1,000,000	1,017,190	Custodian
3.500%	3.500%	FNMA-Callable Coupon	11/20/08	11/17/11	1,000,000	1,000,000	1,017,500	Custodian
4.050%	4.050%	FFCB-Callable Coupon	11/20/08	11/20/12	1,000,000	1,000,000	1,003,440	Custodian
3.550%	3.550%	FNMA-Callable Coupon	11/28/08	11/28/11	1,000,000	1,000,000	1,009,380	Custodian
3.000%	3.000%	FHLB-Callable Coupon	12/29/08	12/29/11	1,000,000	1,000,000	1,010,940	Custodian
		Sub-Total			<u>42,992,820</u>	<u>43,000,000</u>	<u>43,719,150</u>	
		Total Investments			<u>44,992,820</u>	<u>\$45,000,000</u>	<u>45,727,903</u>	

Note: Gov. Agency Coupon Notes will distribute interest every six month.

1-TIPS' interest earnings incl base coupon interest plus inflation adjustment

Interest earnings for the month were as followed:

	Amount Earned/Accrued	Current Yield
Refunding Revenue Bonds - Reserve Fund (Bank of New York/LAIF) Investments	7,559	2.353%
Local Agency Investment Fund (LAIF)	176,951	4.330%
HighMark US Treasury Money Market Fund	63,435	2.353%
Sweep Accounts (Wells Fargo Bank/Bank of New York)	3	0.050%
	1,284	0.791%
Total Earnings	<u>\$249,232</u>	

Schedule of Investment Balance Limitations (Per District investment policy)

The source of the market valuation is as followed:	Total Amount Invested	% of Total	Max. Limit Allowed
Investments (Note 1)	\$44,992,820	53.49%	no limit
Refunding Revenue Bonds - Reserve Fund (Bank of New York/LAIF)	3,852,959	4.58%	1 yr debt pmt.
HighMark US Treasury Money Market Fund (Union Bank)	37,209	0.04%	no limit
Local Agency Investment Fund (LAIF)	35,241,438	41.89%	40,000,000
Total	<u>\$84,124,426</u>	<u>100.00%</u>	

(Note 2)

Note 1: The average weighted duration for investments, excluding LAIF, is 972 days, which is under the assumption that callable coupons will not be called and will be held until maturity.

Note 2: In December 2008, Joint Powers Authority's participation in investment is \$4,958,781.04, of which \$3,375,192.41 (or 68.06%) belongs to LV.

LVMWD Investment Report for the Month Ending December 31, 2008

Bank Account Balances as of December 31, 2008:

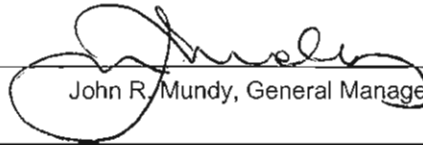
Bank Name	Account Type	Amount
Wells Fargo Bank	Checking	\$52,456 (Note 3)
Wells Fargo Bank	Sweep	353,984
Bank of New York	Money Market	38
	Total	<u>\$406,478</u>

Note 3: This is bank balance without adjusting for outstanding checks. The total amount of outstanding checks is unavailable at the time of reporting.

"All District investments are included in this report and all investments, except those relating to debt issues and deferred compensation programs funds, conform to District investment policy. All investment transactions within the period covered by this report, except for the exceptions noted above, conform to District investment policy. Deferred compensation program funds are not included in this report; their investment is directed by individual employees participating in the deferred compensation program and not by the District. Debt issue funds are included in this report; their investment is controlled by specific provisions of the issuance documents and not by the District."

"The deposits and investments of the District safeguard the principal and maintain the liquidity needs of the District, providing the District with the ability to meet expenditure requirements for the next six months. The maturity dates are compatible with foreseeable cash flow requirements. The deposits and investments can be easily and rapidly converted into cash without substantial loss of value."

Approved for January 27, 2009 Agenda:


John R. Mundy, General Manager

I HEREBY CERTIFY THAT THE FOREGOING IS TRUE AND CORRECT
TO THE BEST OF MY KNOWLEDGE

Audit Lion for Sandra Schmidt
1/14/09

Jeff Smith, Treasurer

Date _____



January 27, 2009 Board Meeting

TO: Board of Directors
FROM: Finance and Administration

Subject Investment Review for the Fourth Quarter 2008

SUMMARY

A list of investments as of December 31, 2008 is presented for Board review. The total interest for the quarter is \$698,559.61. The average weighted portfolio duration excluding LAIF, reserve fund and money market fund is 972 days.

RECOMMENDATION

Receive and file.

DISCUSSION

During this quarter, \$14 million of investments were called and \$22 million of investments were purchased. Investment in LAIF has decreased to purchase investment in government agency notes.

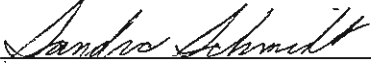
Table with 2 columns: Investment Category and Amount. Rows include LAIF - General, LAIF - Reserve Fund, Government Agency Notes (maturing in 2009, 2010, 2011 or later), U.S. Treasury Money Market Fund, and Total.


These investments generated interest of \$698,559.61 for the quarter. Investment portfolio ratios were as follows:

Table with 2 columns: Investment Category and Percentage. Rows include Investments in LAIF, Callable Federal Agency Notes, Federal Agency Discount/Coupon Notes, US Treasury Money Market Fund, and Total.

50

Violet Liou, Finance Manager prepared this report.

 Jan 20, 2009
Sandra Schmidt Date
Director, Finance and Administration

 1/20/09
John R. Mundy Date
General Manager

I hereby certify that the foregoing is true and correct to the best of my knowledge.

Jeffery A. Smith Date
Treasurer

**LAS VIRGENES MUNICIPAL WATER DISTRICT
INVESTMENTS - 4TH QUARTER ENDED DECEMBER 31, 2008**

Investment Type	Interest Rate	No. of Days	Purchase Date	Maturity Date	Book Value	Par Value	Quarterly Interest Earned	Quarterly Interest Accrued	Quarterly Total Interest
FFCB - Non-Call	5.150%	1552	09/06/06	12/06/10	1,000,820.00	1,000,000.00		12,875.01	12,875.01
FFCB - Callable	5.250%	737	12/05/06	12/11/08	1,000,000.00	1,000,000.00	10,189.52		10,189.52
FFCB - Callable	5.000%	1827	09/28/07	09/28/12	1,000,000.00	1,000,000.00		12,500.01	12,500.01
FFCB - Callable	4.100%	327	01/23/08	12/15/08	1,000,000.00	1,000,000.00	8,346.92		8,346.92
FFCB - Callable	4.000%	258	04/16/08	12/30/08	1,000,000.00	1,000,000.00	9,888.90		9,888.90
FFCB - Callable	3.750%	1095	09/29/08	09/29/11	1,000,000.00	1,000,000.00		9,375.00	9,375.00
FFCB - Callable	4.250%	1826	10/15/08	10/15/13	1,000,000.00	1,000,000.00		9,025.54	9,025.54
FFCB - Callable	4.000%	1277	11/03/08	05/03/12	1,000,000.00	1,000,000.00		6,444.44	6,444.44
FFCB - Callable	3.375%	1095	11/18/08	11/18/11	1,000,000.00	1,000,000.00		4,031.25	4,031.25
FFCB - Callable	4.050%	1461	11/20/08	11/20/12	1,000,000.00	1,000,000.00		4,612.50	4,612.50
FHLB - Callable	5.000%	1826	02/09/06	02/09/11	1,000,000.00	1,000,000.00		12,500.01	12,500.01
FHLB - Callable	5.250%	1826	03/24/06	03/24/11	1,000,000.00	1,000,000.00		13,125.00	13,125.00
FHLB - Callable	5.340%	1826	04/27/06	04/27/11	1,000,000.00	1,000,000.00		13,350.00	13,350.00
FHLB - Callable	5.600%	1826	06/30/06	06/30/11	1,000,000.00	1,000,000.00		14,000.01	14,000.01
FHLB - Callable	5.500%	1826	08/18/06	08/18/11	1,000,000.00	1,000,000.00		13,749.99	13,749.99
FHLB - Callable	5.320%	1826	09/08/06	09/08/11	1,000,000.00	1,000,000.00		13,299.99	13,299.99
FHLB - Callable	5.300%	1826	09/28/06	09/28/11	1,000,000.00	1,000,000.00		13,250.01	13,250.01
FHLB - Callable	5.400%	731	10/17/06	10/17/08	1,000,000.00	1,000,000.00	2,322.58		2,322.58
FHLB - Callable	5.450%	731	10/27/06	10/27/08	1,000,000.00	1,000,000.00	3,809.06		3,809.06
FHLB - Callable	5.300%	1826	11/09/06	11/09/11	1,000,000.00	1,000,000.00		13,250.01	13,250.01
FHLB - Callable	5.000%	731	12/15/06	12/15/08	1,000,000.00	1,000,000.00	10,214.98		10,214.98
FHLB - Callable	5.020%	731	12/22/06	12/22/08	1,000,000.00	1,000,000.00	11,200.61		11,200.61
FHLB - Callable	5.200%	1826	01/17/07	01/17/12	1,000,000.00	1,000,000.00		12,999.99	12,999.99
FHLB - Callable	5.400%	1827	06/01/07	06/01/12	1,000,000.00	1,000,000.00		13,500.00	13,500.00
FHLB - Callable	5.625%	1827	06/21/07	06/21/12	1,000,000.00	1,000,000.00		14,062.50	14,062.50
FHLB - Callable	5.400%	1461	08/24/07	08/24/11	1,000,000.00	1,000,000.00		13,500.00	13,500.00
FHLB - Callable	5.350%	366	10/10/07	10/10/08	1,000,000.00	1,000,000.00	1,337.54		1,337.54
FHLB - Callable	5.000%	366	11/26/07	11/26/08	1,000,000.00	1,000,000.00	7,638.86		7,638.86
FHLB - Callable	4.000%	274	01/14/08	10/14/08	1,000,000.00	1,000,000.00	1,397.88		1,397.88
FHLB - Callable	4.450%	1827	02/12/08	02/12/13	1,000,000.00	1,000,000.00		11,124.99	11,124.99
FHLB - Callable	4.000%	1461	02/15/08	02/15/12	1,000,000.00	1,000,000.00		9,999.99	9,999.99
FHLB - Callable	3.600%	926	09/17/08	04/01/11	1,000,000.00	1,000,000.00		9,000.00	9,000.00
FHLB - Bullet	3.250%	106	09/29/08	01/13/09	1,000,000.00	1,000,000.00		8,124.99	8,124.99

**LAS VIRGENES MUNICIPAL WATER DISTRICT
INVESTMENTS - 4TH QUARTER ENDED DECEMBER 31, 2008**

Investment Type	Interest Rate	No. of Days	Purchase Date	Maturity Date	Book Value	Par Value	Quarterly Interest Earned	Quarterly Interest Accrued	Quarterly Total Interest
FHLB - Bullet	3.250%	182	10/02/08	04/02/09	1,000,000.00	1,000,000.00		8,037.63	8,037.63
FHLB - Callable	3.500%	479	10/14/08	02/05/10	997,500.00	1,000,000.00		7,526.89	7,526.89
FHLB - Callable	4.150%	1369	10/16/08	07/16/12	1,000,000.00	1,000,000.00		8,701.61	8,701.61
FHLB - Callable	4.250%	1369	10/17/08	07/17/12	1,000,000.00	1,000,000.00		8,797.05	8,797.05
FHLB - Callable	4.000%	730	10/21/08	10/21/10	1,000,000.00	1,000,000.00		7,849.46	7,849.46
FHLB - Callable	4.500%	1095	10/21/08	10/21/11	1,000,000.00	1,000,000.00		8,830.65	8,830.65
FHLB - Callable	4.050%	730	10/22/08	10/22/10	1,000,000.00	1,000,000.00		7,838.71	7,838.71
FHLB - Callable	4.000%	1278	10/27/08	04/27/12	1,000,000.00	1,000,000.00		7,204.29	7,204.29
FHLB - Bullet	3.220%	365	10/30/08	10/30/09	1,000,000.00	1,000,000.00		5,539.78	5,539.78
FHLB - Callable	3.000%	1095	12/29/08	12/29/11	1,000,000.00	1,000,000.00		241.94	241.94
FHLMC - Callable	5.750%	1826	07/20/06	07/20/11	1,000,000.00	1,000,000.00		14,375.01	14,375.01
FHLMC - Callable	5.250%	685	11/21/06	10/06/08	998,820.00	1,000,000.00	1,909.17		1,909.17
FHLMC - Callable	5.000%	1826	12/21/06	12/21/11	1,000,000.00	1,000,000.00		12,500.01	12,500.01
FHLMC - Callable	5.550%	549	06/22/07	12/22/08	1,000,000.00	1,000,000.00	12,487.50		12,487.50
FHLMC - Callable	4.000%	183	06/03/08	12/03/08	1,000,000.00	1,000,000.00	6,888.90		6,888.90
FHLMC - Callable	4.000%	1095	09/16/08	09/16/11	1,000,000.00	1,000,000.00		9,999.99	9,999.99
FHLMC - Callable	3.250%	502	10/24/08	03/10/10	995,000.00	1,000,000.00		6,115.58	6,115.58
FHLMC - Callable	4.000%	1007	10/24/08	07/28/11	1,000,000.00	1,000,000.00		7,526.88	7,526.88
FNMA - Callable	5.125%	1827	11/05/07	11/05/12	1,000,000.00	1,000,000.00		12,812.49	12,812.49
FNMA - Callable	4.250%	92	07/08/08	10/08/08	1,000,000.00	1,000,000.00	799.72		799.72
FNMA - Callable	4.375%	1095	10/07/08	10/07/11	1,000,000.00	1,000,000.00		10,231.85	10,231.85
FNMA - Callable	4.000%	728	10/10/08	10/08/10	1,000,000.00	1,000,000.00		9,032.25	9,032.25
FNMA - Callable	4.250%	968	10/29/08	06/24/11	999,500.00	1,000,000.00		7,426.08	7,426.08
FNMA - Callable	4.000%	1369	11/10/08	08/10/12	1,000,000.00	1,000,000.00		5,666.66	5,666.66
FNMA - Callable	3.500%	1092	11/20/08	11/17/11	1,000,000.00	1,000,000.00		3,986.11	3,986.11
FNMA - Callable	3.550%	1095	11/28/08	11/28/11	1,000,000.00	1,000,000.00		3,254.16	3,254.16
TIPS	2.375% + Infl.	937	04/28/06	11/20/08	1,000,674.34	1,000,000.00	(51,514.00)		(51,514.00)
Reserve Fund-LAIF & Other					3,919,728.81			24,781.88	24,781.88
LAIF - All Other (3-month Average Balances)					30,759,437.61			200,087.44	200,087.44
HighMark U.S. Treasury Money Market Fund (3-month Average Balances)					34,398.96			160.71	160.71
Bank of New York/Wells Fargo Sweep Accounts (3-month Average Balances)					1,903,958.20			5,415.13	5,415.13
Total							36,918.14	661,641.47	698,559.61

RESOLUTION NO. 01-09-2385

A RESOLUTION OF THE BOARD OF DIRECTORS OF
LAS VIRGENES MUNICIPAL WATER DISTRICT
REPEALING RESOLUTION NO. 6-08-2382

BE IT RESOLVED BY THE BOARD OF DIRECTORS OF LAS VIRGENES MUNICIPAL WATER DISTRICT that the board of directors of Las Virgenes Municipal Water District hereby repeals Resolution No. 6-08-2382 as of the effective date of Ordinance No. 01-09-254.

PASSED, APPROVED, AND ADOPTED on January 27, 2009.

Charles Caspary
President

ATTEST:

Glen Peterson
Secretary

(SEAL)

APPROVED AS TO FORM:

Wayne Lemieux
District Counsel

RESOLUTION 6-08-2382

A RESOLUTION OF THE BOARD OF DIRECTORS OF LAS VIRGENES MUNICIPAL WATER DISTRICT ADOPTING MANDATORY WATER CONSERVATION MEASURES

WHEREAS, California is experiencing critically dry water conditions in the Sacramento and San Joaquin River basins and the statewide runoff forecast for 2008 is estimated to be 41 percent below average; and

WHEREAS, deliveries through the Sacramento-San Joaquin River Delta for the State Water Project are being greatly restricted due to various factors including federal court actions to protect fish species, resulting in estimated deliveries of only 35 percent of local agencies' requested amounts for 2008; and

WHEREAS, state and regional water supply reliability has been reduced by a determination to draw down regional stored water to compensate for reduced water supplies and increased water demand; and

WHEREAS, the Colorado River Basin has experienced a record eight-year drought resulting in current reservoir storage throughout the river system reduced to just over 50 percent of total storage capacity; and

WHEREAS, climate change will increasingly impact California's hydrology and is expected to reduce snowpack, altering the timing of runoff and increasing the intensity and frequency of droughts in the western United States; and

WHEREAS, a call by Las Virgenes Municipal Water District for a voluntary 10% reduction in water use has resulted in a 5% water reduction mostly due to the rains in January 2008; and

WHEREAS, on June 4, 2008 the Governor of the State of California proclaimed a condition of statewide drought; and

WHEREAS, on June 10, 2008 the Metropolitan Water District of Southern California declared a Water Supply Alert calling on local public water agencies and retailers to achieve extraordinary conservation by adopting and enforcing drought ordinances.

NOW, THEREFORE, BE IT RESOLVED BY THE BOARD OF DIRECTORS OF LAS VIRGENES MUNICIPAL WATER DISTRICT as follows:

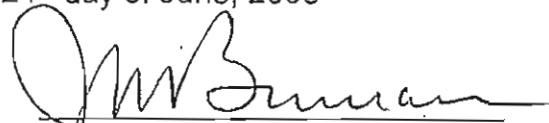
Section 1. Pursuant to Section 3-4.407 the Las Virgenes Municipal Water Code, the following mandatory water conservation measures are adopted beginning July 1, 2008.

- a) irrigation is prohibited between the hours of 10:00 a.m. and 5:00 p.m.
- b) Use of water to clean or sweep hard surfaces such as, but not limited to, sidewalks, walkways, driveways or parking areas is prohibited unless such washing is required for reasons of public health or safety.
- c) Restaurants shall serve water only on request of the customer.
- d) Hotels shall provide guests the option to not have linens and towels replaced during stays lasting two days or more.

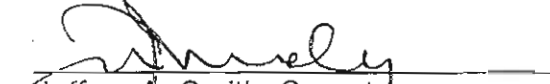
Section 2. Furthermore, customers are urged to immediately adopt the following voluntary conservation measures.

- a) Eliminate watering of outdoor landscaping by at least one day per week.
- b) Promptly consider reduction or replacement of existing sod covered areas with drought tolerant landscaping.


PASSED, APPROVED AND ADOPTED this 24th day of June, 2008


Joseph M. Bowman, President

ATTEST:


~~Jeffery A. Smith, Secretary~~
JOHN R. MUNDY
DEPUTY SECRETARY
APPROVED AS TO FORM:

(SEAL)


Wayne K. Lemieux, District Counsel

ORDINANCE NO. 01-09-254

AN ORDINANCE OF THE BOARD OF DIRECTORS OF
LAS VIRGENES MUNICIPAL WATER DISTRICT
AMENDING ORDINANCE NO. 11-86-161
(LAS VIRGENES CODE)
AS IT RELATES TO WATER CONSERVATION

BE IT ORDAINED BY THE BOARD OF DIRECTORS OF LAS VIRGENES MUNICIPAL WATER DISTRICT as follows:

1. Purpose.

This ordinance amends the Las Virgenes Code to introduce additional mandatory water conservation measures pursuant to Water Code Section 71610.5.

2. Amendment.

Section 3-4.404 of Ordinance No. 11-86-161 is hereby amended and reenacted to read as follows:

“3-4.404 WATER CONSERVATION MEASURES

(a) Customers shall comply with the following water conservation measures:

(1) Potable water shall not be used to clean or sweep hard surfaces such as sidewalks, walkways, driveways or parking areas unless the washing is performed with an approved water conservation broom, and only as necessary to protect the public health and safety.

(2) Restaurants shall serve water only on request of the customers.

(3) Hotels, motels and other places for commercial transient occupancy shall offer guests who stay more than one night the opportunity to retain towels and linens during their stay.

(4) Car washing is permitted only with the use of a nozzle having an automatic shut-off.

(b) Customers shall use the following irrigation practices:

(1) Irrigation shall occur after 5:00 p.m. and before 10:00 a.m., provided no irrigation is permitted during rainfall, provided further, irrigation is not permitted for 24 hours after rainfall in excess of 1 inch.

(2) Irrigation shall not run off to streets, gutters or adjacent properties.

(3) The District shall assist in the promotion of water efficient irrigation practices by monitoring compliance with landscaping plans approved by cities and the county under the Water Conservation in Landscaping Act. The District shall notify the city or county with jurisdiction by law if it is determined that a landscaping plan has been breached.”

3. Amendment.

Section 3-4.406 of Ordinance No. 11-86-161 is hereby repealed.

4. Amendment.

Section 3-4.407 of Ordinance No. 11-86-161 is hereby amended and reenacted to read as follows:

“3-4.407 WATER SHORTAGE RESPONSE – DROUGHT AND EMERGENCIES

(a) The General Manager shall recommend responses to water shortage emergencies as the need arises. The board shall adopt additional conservation measures as appropriate.

(b) A customer may request relief from mandatory conservation practices by filing a written appeal with the General Manager.

(c) The General Manager may grant relief in case of hardship if all feasible means of conserving water have been exercised, including but not limited to: retrofitting high-flow toilets with Ultra Low-Flush Toilets ("ULFT") or High Efficiency Toilets ("HET"); installation of low-flow showerheads; a water audit by the District and compliance with staff recommendations; and no observable runoff.

(d) The decision of the General Manager may be appealed to a five-member water shortage committee appointed by the board. The committee shall review the General Manager's decision and approve or deny the petition based on the circumstances of each case. Decisions of the committee shall be final."

5. Amendment.

Section 3-4.408 is hereby added to Ordinance No. 11-86-161 to read as follows:

"3-4.408 ENFORCEMENT

(a) Customers shall be notified in writing when the first violation of this article is discovered by the District. The notice shall include a warning that further violations could result in stricter penalties as set forth below.

(b) Customers who violate this article for a second time within a twelve-month period have committed an infraction punishable by a fine of up to \$50.00.

(c) Customers who violate this article for a third time within a twelve-month period have committed an infraction punishable by a fine of up to \$100.00

(d) Customers who violate this article for a fourth time within a twelve-month period have committed an infraction punishable by a fine of up to \$250.

(e) The District may install flow restrictors or terminate service to customers who have violated provisions of this article five times within a twelve-month period.

(f) Customers shall be encouraged to report violations of this article through the District's water conservation "hot line".

(g) Fines collected pursuant to this section shall be deposited in a special fund and spent to provide assistance for water reduction appliances and processes.

6. Other.

Except as provided herein, Ordinance No. 11-86-161 is reaffirmed and readopted.

PASSED, APPROVED AND ADOPTED on January 27, 2009.

Charles Caspary, President

ATTEST:

APPROVED AS TO FORM:

Glen Peterson, Secretary

Wayne Lemieux, Legal Counsel

[Seal]

ORDINANCE NO. 01-09-255

AN ORDINANCE OF THE BOARD OF DIRECTORS OF LAS VIRGENES MUNICIPAL WATER DISTRICT AS RELATES TO STANDBY CHARGES FOR THE FISCAL YEAR COMMENCING JULY 1, 2009

BE IT ORDAINED BY THE BOARD OF DIRECTORS OF LAS VIRGENES MUNICIPAL WATER DISTRICT as follows:

Section 1. Purpose

This ordinance fixes and continues a standby charge to be levied against each lot or parcel within the district for the fiscal year commencing July 1, 2009, for the purpose of financing the district's potable water replacement program. This charge is imposed pursuant to the Municipal Water District Law.

Section 2. Findings

The Board of Directors finds, determines and declares as follows:

- (a) The board has provided a duly published and mailed notice of public hearing and has conducted a public hearing to consider adoption of a standby assessment;
- (b) The board has considered the written and oral comments presented by interested parties concerning the assessment;
- (c) The district has approved a categorical exemption for the project under the California Environmental Quality Act;
- (d) The standby assessment will be used to pay for a portion of the cost of the potable water replacement programs instituted by the district;
- (e) It is in the best interests of the district and the community which it serves to pay for a portion of water programs from the proceeds of standby assessments because landowners benefit from maintaining available water supply.

Section 3. Standby Charge

An annual standby charge in the amount of \$10.00 per acre for parcels over one acre, and \$10.00 for each parcel of land of less than one acre is hereby levied against all land within the district for the fiscal year commencing July 1, 2009. A description of the lands (by assessor parcel number) affected by the assessment is on file with the secretary.

Section 4. Collection

The Board of Supervisors and Auditor of the County of Los Angeles are hereby directed to levy, collect and remit to the district this standby charge at the time and in the manner required by law for the levying of taxes for county purposes.

Section 5. Deferrals

- (a) A property owner may request a complete or partial deferral from the standby charge by filing a written request by April 1st during the fiscal year for which the deferral is sought. The deferral shall be processed and evaluated in accordance with this section.

7C

- (b) The following property is eligible for deferral:
- (i) Property owned and occupied by a federal, state or local governmental agency.
 - (ii) Property permanently dedicated to open-space.
 - (iii) Property which cannot use water supplied by the district due to restrictions imposed by deed or governmental agencies with land use jurisdiction.
 - (iv) Property which cannot reasonably be expected to derive any benefit from facilities constructed with the proceeds of the water standby charge.
- (c) If the general manager approves the request, the charges paid by the applicant shall be refunded and no charge shall be levied for subsequent years. The applicant shall execute an agreement to repay the charges with interest if the property ceases to be eligible for the deferral. The agreement shall be recorded.
- (d) If the general manager denies the request, the applicant may appeal denial of the deferral by the general manager by filing a written request for review within 10-days after the general manager's decision. The board shall promptly consider the request for review. The decision of the board shall be final.
- (e) The general manager shall adopt reasonable rules and regulations to implement this section.

PASSED, APPROVED and ADOPTED on January 27, 2009.

Charles Caspary
President

ATTEST:

Glen Peterson
Secretary

APPROVED AS TO FORM:

Wayne K. Lemieux
District Counsel

(SEAL)



January 27, 2009 Board Meeting

TO: Board of Directors
FROM: Facilities and Operations

Subject: Corrosion Control Program 2008-09 – Approve Proposal

Las Virgenes Municipal Water District and Triunfo Sanitation District Joint Powers Authority approved funding for this matter in the Joint Powers Authority Budget. This recommendation is before the LVMWD Board of Directors for action, as administering agent, as authorized under the Joint Powers Authority Agreement.

SUMMARY

Harper and Associates completed the 2007-08 Corrosion Control Program which included inspection of the District cathodic protection (CP) systems, preparation of LVMWD Report #2396.00, and identification of projects needing repair and upgrade as part of the 2008-09 Program.

As part of the Corrosion Control Program 2008-09, the District requested a proposal from Harper and Associates to provide services recommended in the report. This project would replace the Cordillera Tank CP system, furnish and install Ranch View Tank CP system, retest 23 tank CP systems, retest Las Virgenes Reservoir Intake CP system, inspect newly drained and cleaned Rancho Centrate Tank #1, and replace sacrificial anode arms at Tapia aeration basins.

RECOMMENDATION

- Accept the proposal from Harper & Associates Engineering, Inc. in an amount not to exceed \$54,300.


FINANCIAL IMPACT

The Fiscal Year 08-09 Budget provides funding for the Cathodic Protection Program under 10408 (JPA) in the amount of \$81,250; and 10409 in the amount of \$43,750.

Lindsay Cao, Associate Engineer, prepared this report.

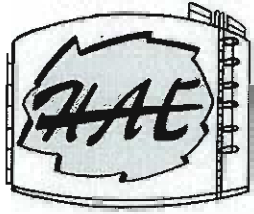
 1/13/09

David R. Lippman Date
Director of Facilities and Operations

 1/15/09

John R. Mundy Date
Administering Agent/General Manager

8A



HARPER & ASSOCIATES ENGINEERING, INC.
CONSULTING ENGINEERS

*1240 E. Ontario Ave., Ste. 102-312 Corona, CA 92881-8671
Phone (951) 372-9196 Fax (951) 372-9198
www.harpereng.com, HAETanks@aol.com*

PROPOSAL
FOR
ENGINEERING AND CONSTRUCTION SERVICES
2008-2009 CORROSION CONTROL PROGRAM
LAS VIRGENES MUNICIPAL WATER DISTRICT

The following proposal is provided to the Las Virgenes Municipal Water District (LVMWD), per their Request For Proposal (RFP) dated November 10, 2008. This proposal is provided by Harper & Associates Engineering, Inc. as a part of continuing engineering efforts to the District with regard to corrosion control and mitigation in the form of cathodic protection.

Previously, in 2006 and 2007, Harper & Associates Engineering, Inc. (HAE) provided the District with technical services to test and inspect cathodic protection systems on numerous District facilities including approximately 30 potable water storage reservoirs, a 30" diameter CML&C steel underground water transmission line, two centrate sludge tanks and an aeration basin at the Tapia Facility.

In accordance with the Scope of Work presented in Exhibit A of the RFP, HAE is providing the following proposals for various projects within the District:

CORDILLERA RESERVOIR

1. Replace the existing automatic potential control cathodic protection transformer/rectifier with a new contemporary 20V-15A unit
2. Repair/replace all existing reservoir interior anode lead wire splices to the interior header cable
3. Replace existing permanent copper-copper sulfate reference electrode with a new unit
4. Energize the replacement system, adjust the new system for proper operation
5. Provide a complete written report with findings

RANCH VIEW RESERVOIR

Design, furnish and install a completely new sacrificial magnesium anode cathodic protection system for the interior wetted surfaces of the reservoir. The new system will consist of interior suspended magnesium anode rods and a monitoring copper-sulfate reference and exterior test box. After the installation has been completed, energize and test the system and provide a complete written report with findings.

BALANCE OF PROTECTED SYSTEM RESERVOIRS

1. Provide a complete system retest of all existing interior cathodic protection systems on the remaining steel reservoirs and provide a complete written report with test data, conclusions & recommendations, and detailed cost estimates for any repairs/replacements needed. Retest will be accomplished in one continuous effort for all reservoirs rather than a "one-at-a-time" basis. Twenty-three (23) total.
2. As an **option**, provide a complete system retest of the impressed current cathodic protection system at the Las Virgenes (Open) Reservoir and provide a complete written report with test data, conclusions & recommendations, and a detailed cost estimate for any repairs/replacements needed.

RANCHO CENTRATE TANK #1

Provide a physical and photographic inspection of the newly drained and cleaned Centrate #1 tank to verify the condition of the existing sacrificial anode cathodic protection system, the newly installed "Jet Aeration System" and interior piping, and anything else that might contribute to the proper operation of the existing cathodic protection system. Should the existing CP system be deemed inadequate for use with the new aeration system (by field testing once the tank has been refilled), recommendations will be presented for a newly designed impressed current system.

TAPIA AERATION BASINS

Assist the District with supervision of District supplied welding operations of new steel sacrificial anode mounting tabs (included with the anodes) on existing aeration arms within the six basins. After the new steel mounting tabs have been welded on, furnish and install forty-eight (48) new thirty-six (36) pound high-potential sacrificial magnesium anodes, one per aeration arm. The anode model will be **GA-MG-T-36**. After the anodes have been installed, test the systems and provide a complete written report with findings.

COST BREAKDOWN

The following "LUMP SUM" price quotes are provided for each of the preceding items:

- | | |
|--|----------------|
| 1. Cordillera Reservoir | \$5,800 |
| 2. Ranch View Reservoir | \$11,800 |
| 3. Retest Balance of Reservoirs (Not to exceed \$14,950) | \$650 per each |

- | | |
|--|----------|
| 4. Retest Las Virgenes Reservoir (Optional) | \$650 |
| 5. Rancho Centrate #1 (time & materials basis, not to exceed) | \$1,400 |
| 6. Tapia Aeration Arms (total for 48)
plus freight (McAllen TX) plus \$1400/day (est. 3 days) installation time | \$14,400 |

Freight charges are estimated to be \$1,100.00 FOB McAllen, TX. Anode prices are fixed Until December 31, 2008 as the price of magnesium is continually fluctuating according to the London Metals Exchange (LEM) market.

It is noted that the Tapia anodes can be individually installed by **District personnel**, if desired. The above quote is HAE's price for **furnishing and installing** the new anodes. Should only the anodes be required (no installation), the price for 48 anodes would be \$14,400 plus freight (est. \$1,100.00).

We trust that this proposal meets with your approval. Should you have any questions or require additional information, please feel to contact our offices anytime.

Very truly yours:

HARPER & ASSOCIATES ENGINEERING, INC.

Stephen A. Jones, P.E.



January 27, 2009 Board Meeting

TO: Board of Directors
FROM: Facilities and Operations

**Subject: Tapia Water Reclamation Facility BNR Project:
-Biological Nutrient Reduction Project Phase II Award of Contract**

Las Virgenes Municipal Water District and Triunfo Sanitation District Joint Powers Authority approved funding for this matter in the Joint Powers Authority Budget. This recommendation is before the LVMWD Board of Directors for action, as administering agent, as authorized under the Joint Powers Authority Agreement.

SUMMARY

At the December 9, 2008 meeting, the Board authorized a call for bids for the Tapia Water Reclamation Facility BNR Biological Nutrient Reduction Project Phase II. The Tapia Biological Nutrient Reduction Phase II Project replaces existing basin gates in the BNR basins located at the Tapia WRF. The scope of work for this project includes the removal and replacement of eight (8) basin gates (approximately 5' x 13') and twenty two (22) V-notch slide gates (approximately 3' x 8'). These gates need to be replaced to assure the reliability of the BNR process. It was determined during construction of the Phase I project which gates leaked excessively and are in need of replacement. All six BNR basins will have an internal recycle system installed as part of the Phase I project. This will allow each basin to operate in plug flow independently. Without the replacement of the gates, the tanks cannot be isolated to operate independently.

Bids were solicited from the three pre-qualified contractors. A mandatory pre-bid tour was conducted on December 16, 2008. Two bids were received. The low bid was from Spiess Construction Co., Inc. in the amount of \$378,260. A summary of the bid results is listed below.

Spiess Construction, Inc.	\$378,260
Pascal and Ludwig Constructors	\$469,380

RECOMMENDATION

- Award the contract for the Tapia Water Reclamation Facility BNR Biological Nutrient Reduction Project Phase II to Spiess Construction, Inc. in the amount of \$378,260; and that the remaining bid be rejected upon receipt of duly executed contract documents.

FINANCIAL IMPACT

The Fiscal Year 08-09 budget provides funding for 8 mg/L Nitrogen Compliance Tapia WRF under CIP Job #10184 in the amount of \$6,963,837. The engineer's opinion of probable cost for this project was \$520,000. Construction costs spanning the 07-08 and 08-09 fiscal years for the Tapia Water Reclamation Facility BNR Project are broken down as follows:


8B

Centrate Treatment Project – Pascal & Ludwig (10379)	\$ 1,827,596.00
Centrate Treatment Change Order #1	\$ 16,241.40
Centrate Treatment Change Order #2	\$ 10,546.00
Centrate Treatment Change Order #3	\$ 3,832.00
Tapia BNR Phase I Project - Spiess Const (10378)	\$ 3,245,770.00
BNR Phase I Project Change Order #1	\$ 8,659.05
BNR Phase I Project Change Order #2	\$ 48,394.50
BNR Phase I Project Change Order #3	(\$ 8,665.00)
Pre-Purchased Jet Aeration System	\$ 295,890.00
Pre-Purchased Swing Arm Diffusers	\$ 361,915.00
Owner Furnished Internal Recycle Pumps	\$ 108,200.00
Services During Construction – Boyle	\$ 253,425.00
Services During Construction – MSO	\$ 19,320.00
Services During Construction – Fugro	\$ 7,000.00
BNR Phase II Project - Spiess Const (recommended)	\$ 378,260.00
Total Construction Cost	\$ 6,576,383.95

Brett Dingman, Associate Engineer, prepared this report.


1/13/09

 David R. Lippman
 Director of Facilities and Operations


1/15/09

 John R. Mundy
 Administering Agent/General Manager



January 27, 2009 Board Meeting

TO: Board of Directors
FROM: Finance and Administration

Subject SECOND QUARTER FINANCIAL REVIEW AND SPOTLIGHT ON LVMWD

SUMMARY

A review of the financial statements for the second quarter of FY08-09 shows that the District had higher water sales than expected, which combined with rate adjustments in November 2007 and July 2008, resulted in better than expected operating revenues. Sanitation revenue also increased reflecting the rate adjustments in November and July. Water operating expenses are lower than expected as higher source of supply costs are offset by lower administrative expenses. Sanitation operating expenses are higher than anticipated primarily due to higher JPA expenses.

RECOMMENDATION

Receive and file.

DISCUSSION

The following table provides a pictorial comparison between the second quarter of FY08-09 with the same period in FY07-08 ("Prior Year") and the budget for the second quarter of the current year ("Budget").

The amount in the **Actual** column represents what has been received or spent year-to-date. This agrees with the amount shown on the attached schedules for each enterprise. The **Prior Year** column represents the *difference* between what has been received or spent in the current year with what was received or spent for the same period in the prior year. The actual prior year amount is shown in the attached schedules by enterprise. This table is meant to highlight the difference and shows whether the difference is positive (example: revenue is greater than last year, or expenses are less than last year) or negative (example: revenue is less than last year, or expenses are higher than last year).

The **Budget** column represents the difference between what has been received or spent in the current year with what was budgeted for this period. The actual budget amount is shown in the attached schedules by enterprise. This table is meant to highlight the difference and shows whether the difference is positive (example: revenue is greater than budget, or expenses are less than budget) or negative (example: revenue is less than budget, or expenses are higher than budget).

Interest Income is not shown on the attached schedules, but is reported in the quarterly and monthly investment reports to the Board.

	Actual	Prior Year	Budget
Potable Water Revenues	\$14,748,453	P \$1,046,669	P \$1,225,303
Potable Water Expenses	\$12,613,429	P \$598,447	P \$876,372
Recycled Water Revenues	\$3,651,196	P \$124,797	N \$258,830
Recycled Water Expenses	\$1,293,026	N \$5,657	N \$57,033
Sanitation Revenues	\$8,301,696	P \$2,229,610	P \$174,664
Sanitation Expenses	\$6,077,889	N \$712,558	N \$235,333
Interest Income	\$1,443,847	N \$554,939	P \$212,847
Capacity Fee Income	\$470,532	N \$422,199	N \$1,009,068
Capital Project Expenses	\$3,741,629	N \$2,025,879	P \$3,336,159


Potable Water revenues are higher than anticipated due to higher water sales and rate adjustments. Although potable water source of supply expenses are higher than budgeted due to higher sales, lower administrative expenses as a result of lower labor hours allocated put total operating expenses lower than expected. **Recycled Water** revenues are slightly below budgeted; recycled water expenses are higher than budgeted due to higher potable water supplement cost.

Sanitation revenues and expenses are higher than budgeted due to sanitation rate adjustments and higher JPA operating expenses.

Interest income is higher than anticipated due to the investment strategy that locked-in some higher-rate securities before the Federal Reserve Board started to lower interest rates. However, since Federal Funds rates have dropped to the range of 0% to 0.25% in December 2008, interest income will continue to decline over the coming months.

Capacity fee income and **capital project expenses** vary greatly from year to year due to the nature of the expenses.

This report was prepared by Sandra Schmidt and Violet Liou. Marsha Eubanks prepared the Spotlight on LVMWD.


 John R. Mundy
 General Manager

1/15/09
 Date



Las Virgenes Municipal Water District

Second Quarter Financial Review

FY08-09 Year to Date at December 31

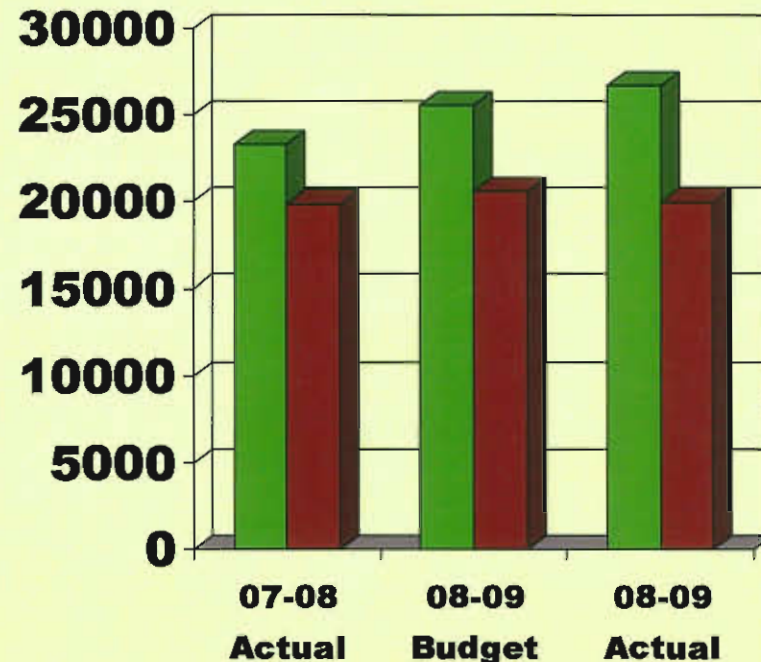
	FY07-08 Actual YTD	FY08-09 Budget YTD	FY08-09 Actual YTD
Total Revenues	\$27,890,025	\$29,704,486	\$30,215,466
Total Expenses	\$24,856,047	\$30,876,718	\$27,267,579
Net Sources (Uses) of Funds	\$3,033,978	(\$1,172,232)	\$2,947,887

Total Enterprise Operation This Year

Second Quarter

(in Thousands)

	FY 07-08 Actual YTD	FY 08-09 Budget YTD	FY 08-09 Actual YTD
<u>Total</u>			
Total Operating Revenues	\$ 23,300,269	\$ 25,560,208	\$ 26,701,345
Source of Supply	8,811,534	8,567,206	9,221,339
Purchased Services	4,726,753	4,756,825	5,325,919
Operating & Maintenance Expenses	2,515,485	2,814,420	2,478,360
Administrative Expenses	3,810,804	4,429,899	2,958,726
Total Operating Expenses	19,864,576	20,568,350	19,984,344
Operating Income available for Replacement Projects and Debt Service	\$ 3,435,693	\$ 4,991,858	\$ 6,717,001



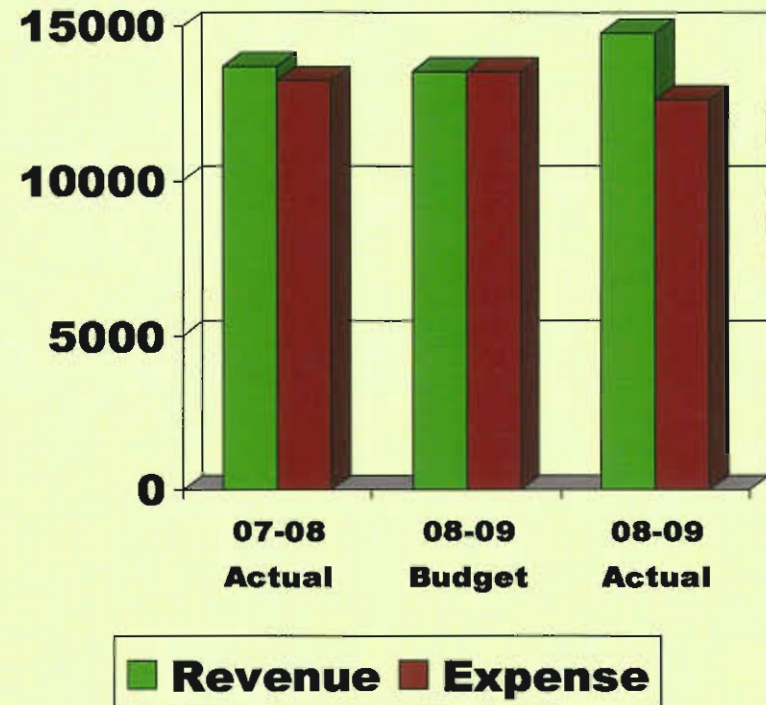
■ Revenue ■ Expense

Potable Water This Year

Second Quarter

(in Thousands)

	FY 07-08 Actual YTD	FY 08-09 Budget YTD	FY 08-09 Actual YTD
<u>Potable Water</u>			
Total Operating Revenues	\$ 13,701,784	\$ 13,523,150	\$ 14,748,453
Source of Supply	7,875,220	7,779,492	8,221,402
Operating & Maintenance Expenses	2,213,669	2,450,512	2,228,632
Administrative Expenses	3,122,987	3,259,797	2,163,395
Total Operating Expenses	13,211,876	13,489,801	12,613,429
Operating Income available for Replacement Projects	\$ 489,908	\$ 33,349	\$ 2,135,024

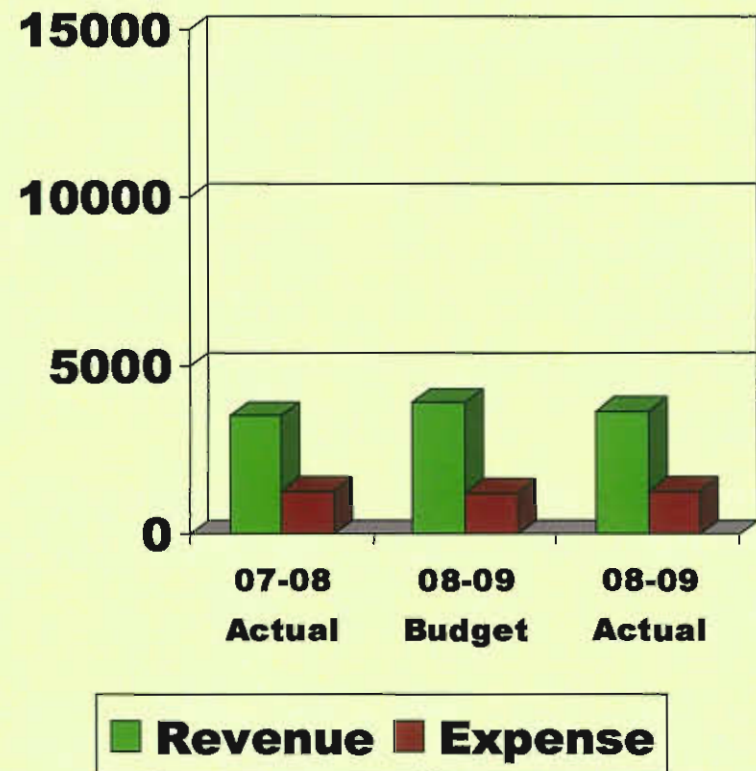


Recycled Water This Year

Second Quarter

(in Thousands)

	FY 07-08 Actual YTD	FY 08-09 Budget YTD	FY 08-09 Actual YTD
<u>Recycled Water</u>			
Total Operating Revenues	\$ 3,526,399	\$ 3,910,026	\$ 3,651,196
Source of Supply	936,314	787,714	999,937
Operating & Maintenance Expenses	109,027	177,649	100,064
Administrative Expenses	242,028	270,630	193,025
Total Operating Expenses	1,287,369	1,235,993	1,293,026
Operating Income available for Rw Repl Projects & Sanitation Operation Replacement	\$ 2,239,030	\$ 2,674,033	\$ 2,358,170

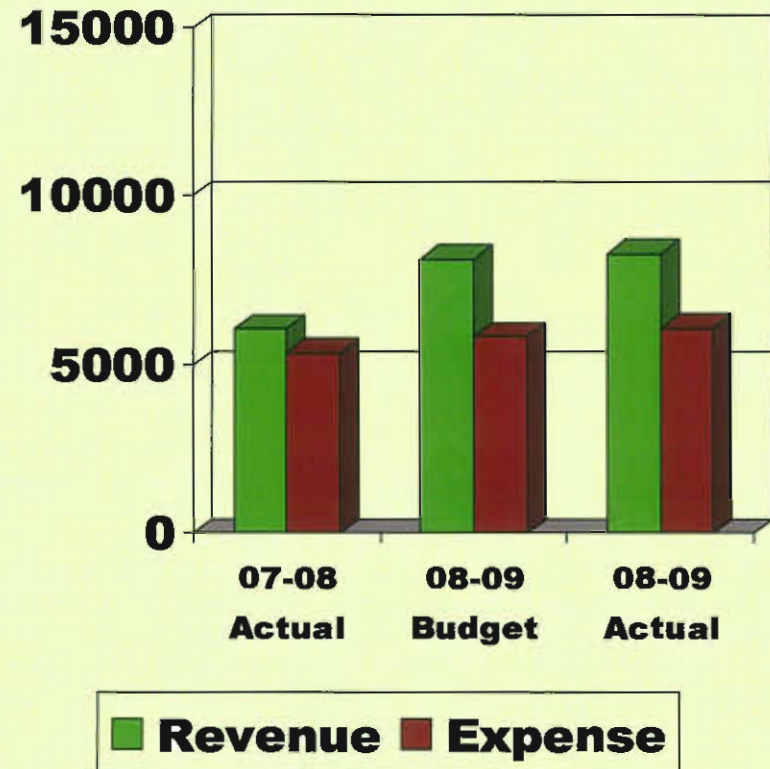


Sanitation This Year

Second Quarter

(in Thousands)

	FY 07-08 Actual YTD	FY 08-09 Budget YTD	FY 08-09 Actual YTD
Sanitation			
Total Operating Revenues	\$ 6,072,086	\$ 8,127,032	\$ 8,301,696
Purchased Services	4,726,753	4,756,825	5,325,919
Operating & Maintenance Expenses	192,789	186,259	149,664
Administrative Expenses	445,789	899,472	602,306
Total Operating Expenses	5,365,331	5,842,556	6,077,889
Operating Income available for Replacement Projects	\$ 706,755	\$ 2,284,476	\$ 2,223,807



Las Virgenes Municipal Water District
Quarterly Update - Comparison to Budget at December 31, 2008
FY08-09 Year to Date

	<u>FY 07-08 Actual YTD</u>	<u>FY 08-09 Budget YTD</u>	<u>FY 08-09 Actual YTD</u>
<u>Total Revenues</u>			
Operating Revenues	\$ 23,300,269	\$ 25,560,208	\$ 26,701,345
Capacity Fees	892,731	1,479,600	470,532
Other	3,697,025	2,664,678	3,043,589
Total Revenues	<u>27,890,025</u>	<u>29,704,486</u>	<u>30,215,466</u>
<u>Total Expenses</u>			
Operating Expenses:			
Staff Salaries	\$ 4,583,728	\$ 5,519,874	\$ 4,915,114
Staff Salaries - Overtime	175,819	108,602	202,825
Other Operating Expenses	15,105,029	14,939,874	14,866,405
Capital Project Expenses	1,715,750	7,077,788	3,741,629
Other	3,275,721	3,230,580	3,541,606
Total Expenses	<u>24,856,047</u>	<u>30,876,718</u>	<u>27,267,579</u>
Net Sources (Uses) of Funds	<u>\$ 3,033,978</u>	<u>\$ (1,172,232)</u>	<u>\$ 2,947,887</u>

Las Virgenes Municipal Water District
Quarterly Update - Comparison to Budget at December 31, 2008
FY08-09 Year to Date

	<u>FY 07-08 Actual</u> <u>YTD</u>	<u>FY 08-09 Budget</u> <u>YTD</u>	<u>FY 08-09 Actual</u> <u>YTD</u>
<u>Total</u>			
Total Operating Revenues	\$ 23,300,269	\$ 25,560,208	\$ 26,701,345
Source of Supply	8,811,534	8,567,206	9,221,339
Purchased Services	4,726,753	4,756,825	5,325,919
Operating & Maintenance Expenses	2,515,485	2,814,420	2,478,360
Administrative Expenses	3,810,804	4,429,899	2,958,726
Total Operating Expenses	19,864,576	20,568,350	19,984,344
Operating Income available for Replacement Projects and Debt Service	<u>\$ 3,435,693</u>	<u>\$ 4,991,858</u>	<u>\$ 6,717,001</u>
<u>Potable Water</u>			
Total Operating Revenues	\$ 13,701,784	\$ 13,523,150	\$ 14,748,453
Source of Supply	7,875,220	7,779,492	8,221,402
Operating & Maintenance Expenses	2,213,669	2,450,512	2,228,632
Administrative Expenses	3,122,987	3,259,797	2,163,395
Total Operating Expenses	13,211,876	13,489,801	12,613,429
Operating Income available for Replacement Projects	<u>\$ 489,908</u>	<u>\$ 33,349</u>	<u>\$ 2,135,024</u>
<u>Recycled Water</u>			
Total Operating Revenues	\$ 3,526,399	\$ 3,910,026	\$ 3,651,196
Source of Supply	936,314	787,714	999,937
Operating & Maintenance Expenses	109,027	177,649	100,064
Administrative Expenses	242,028	270,630	193,025
Total Operating Expenses	1,287,369	1,235,993	1,293,026
Operating Income available for Rw Repl Projects & Sanitation Operation Replacement	<u>\$ 2,239,030</u>	<u>\$ 2,674,033</u>	<u>\$ 2,358,170</u>
<u>Sanitation</u>			
Total Operating Revenues	\$ 6,072,086	\$ 8,127,032	\$ 8,301,696
Purchased Services	4,726,753	4,756,825	5,325,919
Operating & Maintenance Expenses	192,789	186,259	149,664
Administrative Expenses	445,789	899,472	602,306
Total Operating Expenses	5,365,331	5,842,556	6,077,889
Operating Income available for Replacement Projects	<u>\$ 706,755</u>	<u>\$ 2,284,476</u>	<u>\$ 2,223,807</u>

LVMWD CASH ANALYSIS - DECEMBER 31, 2008

	Financial Policies	Restricted by Statute	Restricted - Accrued Liability	Restricted - Funds Held in Trust for Others	Restricted by Bond Covenants	Total Restricted and Unrestricted
Operating Funds	13,613,301					13,613,301
Potable Water Construction		4,229,520				4,229,520
Recycled Water Construction		349,559				349,559
Sanitation Construction		5,501,361				5,501,361
District wide Asset Replacement	17,906,115					17,906,115
Potable Water Replacement	14,365,319					14,365,319
Recycled Water Replacement	461,192					461,192
Sanitation Replacement	15,266					15,266
Emergency/Insurance Reserve	3,158,786					3,158,786
Vested Sick Leave			1,108,506			1,108,506
Joint Powers Authority - Operations and Construction				5,013,733		5,013,733
Prepaid Capacity Fees and Other Deposits				6,579,853		6,579,853
Refunding Revenue Bonds - Reserve Fund					3,852,959	3,852,959
Refunding Revenue Bonds - Revenue/Interest Fund					38	38
Rate Stabilization Reserve	8,202,823					8,202,823
Total	57,722,802	10,080,440	1,108,506	11,593,586	3,852,997	84,358,331

Financial Policy - Cash required to comply with District's adopted Financial Policy. Operating funds must have cash equal to three months of expense plus debt service for one year. Emergency/Insurance Reserve was approved in 2005 and is set at 2% of fixed assets net of land. Rate Stabilization Reserve shields ratepayers from dramatic increases due to climatic events.

Legal Restrictions - AB 1600 requires that development impact fees can only be used for capital projects related to expansion, not replacement or enhancement. The law also restricts interest earned on these funds to the same purpose.

Accrued Liability - Contractual obligation with long-term employees.

Trust Funds - Money held by the District that we do not own and may have to return, such as deposits from developers and customers.

Bond Covenants - Money relating to bond financing that is restricted in use and required by promises made in bond documents.

*Las Virgenes Municipal Water District
Capital Improvement Project Status
December 31, 2008*

<i>Job # - Description</i>	<i>Prior Year Appropriations</i>	<i>Prior Year Expenditures</i>	<i>Prior Year Balance</i>	<i>Current Year Appropriations</i>	<i>Working Capital Requirement</i>	<i>Current Year Expenditures</i>	<i>Contractual Commitments</i>	<i>Balance Available</i>
10106 LV-1 Connection to 1235 GH	\$26,751	\$26,751	\$0	\$310,000	\$310,000	\$0	\$0	\$310,000
10184 8 mg/l Nitrogen Compliance-	\$7,164,193	\$1,661,955	\$5,502,238	\$1,400,000	\$6,902,238	\$3,457,997	\$2,697,593	\$746,648
10190 Manhole Rehab, F2/F3 Line	\$138,781	\$141,465	(\$2,684)	\$0	(\$2,684)	\$0	\$0	(\$2,684)
10191 Enlarge Twin Lakes P/S	\$863,080	\$396,926	\$466,154	\$592,000	\$1,058,154	\$17,164	\$22,213	\$1,018,777
10236 Raise Air Vac Valves	\$200,000	\$529	\$199,471	\$0	\$199,471	\$0	\$0	\$199,471
10253 Rancho LV-Rpl Flare/Flr Contrl	\$45,846	\$45,846	\$0	\$0	\$0	\$0	\$0	\$0
10257 Fuel Cell Rplcemnt-Staff Labor	\$20,000	\$0	\$20,000	\$260,000	\$280,000	\$0	\$0	\$280,000
10276 Install St Emrg Genrtor @ LV-2	\$0	\$0	\$0	\$0	\$0	\$0	\$0	\$0
10280 RWPS#2 Const-Eastern System	\$2,279,967	\$2,518,900	(\$238,933)	\$250,000	\$11,067	\$67,957	\$56	(\$56,946)
10281 24" RW Pipeline-MulHnd--Tapia	\$611,651	\$443,371	\$168,280	\$345,000	\$513,280	\$81,862	\$97,233	\$334,185
10293 Lift Station Improvements	\$652,962	\$441,661	\$211,301	\$50,000	\$261,301	\$170,185	\$4,502	\$86,614
10297 HQ Landscape Renovation	\$44,000	\$13,094	\$30,906	\$50,000	\$80,906	\$2,064	\$7,277	\$71,565
10350 Rancho Centrifuge #2 Conveyor,	\$34,222	\$124,696	(\$90,474)	\$0	\$0	\$0	\$34,222	(\$124,696)
10351 Mixing Zone Study	\$47,000	\$43,034	\$3,966	\$0	\$3,966	\$3,178	\$788	\$0
10360 Tnk Renv:Kimbrly,Woolsey,Mulw	\$270,000	\$175,056	\$94,944	\$360,000	\$454,944	\$69,757	\$10,683	\$374,504
10361 Pipe & Valve Rpl Progm-FY07-0	\$290,000	\$9,662	\$280,338	\$37,500	\$317,838	\$71,537	\$4,100	\$242,201
10362 Vehicle Repl. Progm-FY 07-08	\$160,000	\$17,276	\$142,724	\$0	\$142,724	\$134,220	\$27,437	(\$18,933)
10364 Bisulfite Tank#2 Replacement	\$116,400	\$59,901	\$56,499	\$0	\$56,499	\$53,282	\$0	\$3,217
10365 Automate Sewer Plug	\$75,000	\$0	\$75,000	\$0	\$75,000	\$19,847	\$0	\$55,153
10367 Laboratory Equipment	\$80,000	\$0	\$80,000	\$0	\$80,000	\$0	\$0	\$80,000
10369 Automate Doc Retr/Proc Sys	\$200,000	\$14,000	\$186,000	\$0	\$186,000	\$42,000	\$14,000	\$130,000

<i>Job # - Description</i>	<i>Prior Year Appropriations</i>	<i>Prior Year Expenditures</i>	<i>Prior Year Balance</i>	<i>Current Year Appropriations</i>	<i>Working Capital Requirement</i>	<i>Current Year Expenditures</i>	<i>Contractual Commitments</i>	<i>Balance Available</i>
10370 10" PW Ppln-Mulhd Hwy Ph 1B&	\$3,075,030	\$1,825,608	\$1,249,422	\$0	\$1,249,422	\$269,998	\$22,168	\$957,256
10372 Calabasas Pk Estate Sys Rehab	\$300,000	\$193,427	\$106,573	\$0	\$106,573	\$28,813	\$23,221	\$54,539
10373 Backflow Assembly Install 0708	\$109,963	\$1,240	\$108,723	\$50,000	\$158,723	\$0	\$0	\$158,723
10375 Warner Tank Access Road	\$0	\$11,317	(\$11,317)	\$45,000	\$33,683	\$0	\$0	\$33,683
10377 Automate Dam SeepageMonitori	\$30,000	\$0	\$30,000	\$0	\$30,000	\$4,600	\$4,600	\$20,800
10380 Vehicle Repl. Progm-FY 08-09	\$0	\$0	\$0	\$110,000	\$110,000	\$14,640	\$0	\$95,360
10381 Warner Pump Station Expansion	\$0	\$0	\$0	\$209,700	\$209,700	\$3,645	\$0	\$206,055
10382 Automatic Meter Reading Equip	\$0	\$0	\$0	\$72,000	\$72,000	\$0	\$0	\$72,000
10383 Meter Exchange Progm-FY 08-0	\$0	\$0	\$0	\$124,000	\$124,000	\$21,800	\$0	\$102,200
10384 Integrate Tel & Computer Ntwrk	\$0	\$0	\$0	\$200,000	\$200,000	\$0	\$0	\$200,000
10385 LV-2 P/S Emergency Generator	\$0	\$0	\$0	\$100,000	\$100,000	\$0	\$0	\$100,000
10386 Clbsas City Cntr RW Extension	\$0	\$0	\$0	\$0	\$0	\$0	\$0	\$0
10387 Rancho Material Handling Imprv	\$0	\$0	\$0	\$100,000	\$100,000	\$0	\$0	\$100,000
10388 RVL: Steam Line Repairs	\$0	\$0	\$0	\$110,000	\$110,000	\$0	\$0	\$110,000
10389 Wstlk P/S: Soundproofing	\$0	\$0	\$0	\$103,000	\$103,000	\$0	\$0	\$103,000
10390 RVL: Sludge Pump Upgrades	\$0	\$0	\$0	\$161,500	\$161,500	\$0	\$0	\$161,500
10391 RVL:Compost Reactor Bldg Ceil	\$0	\$0	\$0	\$176,500	\$176,500	\$0	\$0	\$176,500
10392 RVL:Replace Centrate Line	\$0	\$0	\$0	\$75,000	\$75,000	\$50	\$0	\$74,950
10393 RW Storage Study	\$0	\$0	\$0	\$175,000	\$175,000	\$0	\$0	\$175,000
10394 1235' Backbone Imprv Progm-EI	\$0	\$1,606	(\$1,606)	\$450,000	\$448,394	\$39,748	\$0	\$408,646
10395 Equipment for Maintenance	\$0	\$0	\$0	\$11,400	\$11,400	\$0	\$0	\$11,400
10396 HVAC for Building 1	\$0	\$0	\$0	\$7,500	\$7,500	\$0	\$0	\$7,500
10397 Fuel System Upgrades	\$0	\$0	\$0	\$67,280	\$67,280	\$22,359	\$0	\$44,921
10398 Cornell P/S Engine Rebuild	\$0	\$0	\$0	\$35,000	\$35,000	\$0	\$0	\$35,000
10399 Tapia Major Maintenance	\$0	\$0	\$0	\$67,500	\$67,500	\$41,505	\$7,149	\$18,846

<i>Job # - Description</i>	<i>Prior Year Appropriations</i>	<i>Prior Year Expenditures</i>	<i>Prior Year Balance</i>	<i>Current Year Appropriations</i>	<i>Working Capital Requirement</i>	<i>Current Year Expenditures</i>	<i>Contractual Commitments</i>	<i>Balance Available</i>
10400 Customer Info System Upgrade	\$0	\$0	\$0	\$50,000	\$50,000	\$0	\$0	\$50,000
10401 SCADA Communication Improve	\$0	\$0	\$0	\$100,000	\$100,000	\$18,226	\$4,840	\$76,934
10402 Rancho Groundwater Wells	\$0	\$0	\$0	\$100,000	\$100,000	\$0	\$0	\$100,000
10403 Enhanced AMR Implementation	\$0	\$0	\$0	\$200,000	\$200,000	\$145,402	\$66,704	(\$12,106)
10404 Tapia Tank Rehab - FY08-09	\$0	\$0	\$0	\$170,000	\$170,000	\$0	\$0	\$170,000
10405 HVAC System-Building 7/8	\$0	\$0	\$0	\$25,000	\$25,000	\$0	\$0	\$25,000
10406 Seminole P/S Expansion	\$0	\$0	\$0	\$30,300	\$30,300	\$2,573	\$0	\$27,727
10407 Tank Renovation:Indian Hills	\$0	\$0	\$0	\$150,000	\$150,000	\$16,082	\$0	\$133,918
10408 Cathodic Protection Progm-JPA	\$0	\$0	\$0	\$81,250	\$81,250	\$4,119	\$0	\$77,131
10409 Cathodic Protection Progm-PW	\$0	\$0	\$0	\$258,750	\$258,750	\$8,630	\$0	\$250,120
10410 Mulwood P/S Expansion	\$0	\$0	\$0	\$155,000	\$155,000	\$3,860	\$0	\$151,140
10413 Wstlk Village ComPark RW Extn	\$0	\$0	\$0	\$155,320	\$155,320	\$0	\$0	\$155,320
10414 Misc. Equipment - JPA/FY 08-09	\$0	\$0	\$0	\$0	\$0	\$8,240	\$0	(\$8,240)
Totals	<u>\$16,834,846</u>	<u>\$8,167,321</u>	<u>\$8,667,525</u>	<u>\$7,580,500</u>	<u>\$16,338,499</u>	<u>\$4,845,340</u>	<u>\$3,048,786</u>	<u>\$8,353,899</u>
<i>Less: Triunfo Sanitation District's share of JPA Projects</i>			<u>\$1,637,906</u>	<u>\$1,013,345</u>	<u>\$2,677,849</u>	<u>\$1,103,711</u>	<u>\$834,090</u>	<u>\$713,449</u>
<i>Total Las Virgenes share: All Projects</i>			<u>\$7,029,619</u>	<u>\$6,567,156</u>	<u>\$13,660,650</u>	<u>\$3,741,629</u>	<u>\$2,214,696</u>	<u>\$7,640,450</u>

Footnotes

- 1 8 mg/l Nitrogen Compliance-Project includes Centrate Treatment & BNR expenditures.
- 2 WO10363, Cathodic Protection FY07-08, is closed and combined with WO10409. Prior year balance of \$215,000 is carried over to WO10409.
- 3 Additional appropriation of \$24,280 approved September 23, 2008, Agenda item #9A.
- 4 Additional appropriation of \$350,000 approved September 23, 2008, Agenda item #9B.
- 5 Additional appropriation of \$86,750 approved October 28, 2008, Agenda item #8B.
- 6 Transfer appropriation of \$155,320 from WO 10386 to WO 10413 approved November 25, 2008, Agenda item #7B.
- 7 WO10414 established to administer expenditure budgeted in operating accounts.

*Las Virgenes Municipal Water District
Capital Improvement Projects Working Capital
Fiscal Year 2008-09 - through December 31, 2008*

<i>Job # - Description</i>	<i>Working Capital Requirement</i>		<i>YTD Expenditures</i>
	<i>per Budget</i>	<i>Current Estimate</i>	
10106 LV-1 Connection to 1235 GH	\$310,000	\$310,000	\$0
10184 8 mg/l Nitrogen Compliance-	\$6,963,837	\$6,902,238	\$3,457,997
10190 Manhole Rehab, F2/F3 Line	\$0	(\$2,684)	\$0
10191 Enlarge Twin Lakes P/S	\$1,012,000	\$1,058,154	\$17,164
10236 Raise Air Vac Valves	\$195,471	\$199,471	\$0
10253 Rancho LV-Rpl Flare/Fir Contr	\$0	\$0	\$0
10257 Fuel Cell Rplcmnt-Staff Labor	\$280,000	\$280,000	\$0
10276 Install St Emrg Genrtor @ LV-2	\$0	\$0	\$0
10280 RWPS#2 Const-Eastern System	\$148,745	\$11,067	\$67,957
10281 24" RW Pipeline-Mulhnd--Tapia	\$367,868	\$513,280	\$81,862
10293 Lift Station Improvements	\$304,077	\$261,301	\$170,185
10297 HQ Landscape Renovation	\$84,079	\$80,906	\$2,064
10350 Rancho Centrifuge #2 Conveyor,	\$0	\$0	\$0
10351 Mixing Zone Study	\$0	\$3,966	\$3,178
10360 Tnk Renv:Kimbrly,Woolsey,Mulwd	\$475,000	\$454,944	\$69,757
10361 Pipe & Valve Rpl Progm-FY07-08	\$323,807	\$317,838	\$71,537
10362 Vehicle Repl. Progm-FY 07-08	\$0	\$142,724	\$134,220
10364 Bisulfite Tank#2 Replacement	\$0	\$56,499	\$53,282
10365 Automate Sewer Plug	\$75,000	\$75,000	\$19,847
10367 Laboratory Equipment	\$80,000	\$80,000	\$0
10369 Automate Doc Retr/Proc Sys	\$130,000	\$186,000	\$42,000

<i>Job # - Description</i>	<i>Working Capital Requirement</i>		<i>YTD Expenditures</i>
	<i>per Budget</i>	<i>Current Estimate</i>	
10370 10" PW Ppln-Mulhd Hwy Ph 1B&2A	\$2,575,030	\$1,249,422	\$269,998
10372 Calabasas Pk Estate Sys Rehab	\$149,485	\$106,573	\$28,813
10373 Backflow Assembly Install 0708	\$158,723	\$158,723	\$0
10375 Warner Tank Access Road	\$45,000	\$33,683	\$0
10377 Automate Dam SeepageMonitoring	\$0	\$30,000	\$4,600
10380 Vehicle Repl. Progm-FY 08-09	\$110,000	\$110,000	\$14,640
10381 Warner Pump Station Expansion	\$209,700	\$209,700	\$3,645
10382 Automatic Meter Reading Equip	\$72,000	\$72,000	\$0
10383 Meter Exchange Progm-FY 08-09	\$124,000	\$124,000	\$21,800
10384 Integrate Tel & Computer Ntwrk	\$200,000	\$200,000	\$0
10385 LV-2 P/S Emergency Generator	\$100,000	\$100,000	\$0
10386 Clbsas City Cntr RW Extension	\$155,320	\$0	\$0
10387 Rancho Material Handling Imprv	\$100,000	\$100,000	\$0
10388 RVL: Steam Line Repairs	\$110,000	\$110,000	\$0
10389 Wstlk P/S: Soundproofing	\$103,000	\$103,000	\$0
10390 RVL: Sludge Pump Upgrades	\$161,500	\$161,500	\$0
10391 RVL:Compost Reactor Bldg Ceilg	\$176,500	\$176,500	\$0
10392 RVL:Replace Centrate Line	\$75,000	\$75,000	\$50
10393 RW Storage Study	\$88,250	\$175,000	\$0
10394 1235' Backbone Imprv Progm-EIR	\$100,000	\$448,394	\$39,748
10395 Equipment for Maintenance	\$11,400	\$11,400	\$0
10396 HVAC for Building 1	\$7,500	\$7,500	\$0
10397 Fuel System Upgrades	\$43,000	\$67,280	\$22,359
10398 Cornell P/S Engine Rebuild	\$35,000	\$35,000	\$0
10399 Tapia Major Maintenance	\$67,500	\$67,500	\$41,505

<i>Job # - Description</i>	<i>Working Capital Requirement</i>		<i>YTD Expenditures</i>	
	<i>per Budget</i>	<i>Current Estimate</i>		
10400 Customer Info System Upgrade	\$50,000	\$50,000	\$0	
10401 SCADA Communication Improvemnt	\$100,000	\$100,000	\$18,226	
10402 Rancho Groundwater Wells	\$100,000	\$100,000	\$0	
10403 Enhanced AMR Implementation	\$200,000	\$200,000	\$145,402	
10404 Tapia Tank Rehab - FY08-09	\$170,000	\$170,000	\$0	
10405 HVAC System-Building 7/8	\$25,000	\$25,000	\$0	
10406 Seminole P/S Expansion	\$30,300	\$30,300	\$2,573	
10407 Tank Renovation:Indian Hills	\$150,000	\$150,000	\$16,082	
10408 Cathodic Protection Progm-JPA	\$81,250	\$81,250	\$4,119	
10409 Cathodic Protection Progm-PW	\$43,750	\$258,750	\$8,630	2
10410 Mulwood P/S Expansion	\$155,000	\$155,000	\$3,860	
10413 Wstlk Village ComPark RW Extn	\$0	\$155,320	\$0	6
10414 Misc. Equipment - JPA/FY 08-09	\$0	\$0	\$8,240	7
<i>Totals</i>	<u>\$16,833,092</u>	<u>\$16,338,499</u>	<u>\$4,845,340</u>	
<i>Less: Triunfo Sanitation District's share of JPA Projects</i>	<u>\$2,677,517</u>	<u>\$2,677,849</u>	<u>\$1,103,711</u>	
<i>Total Las Virgenes share: All Projects</i>	<u>\$14,155,575</u>	<u>\$13,660,650</u>	<u>\$3,741,629</u>	

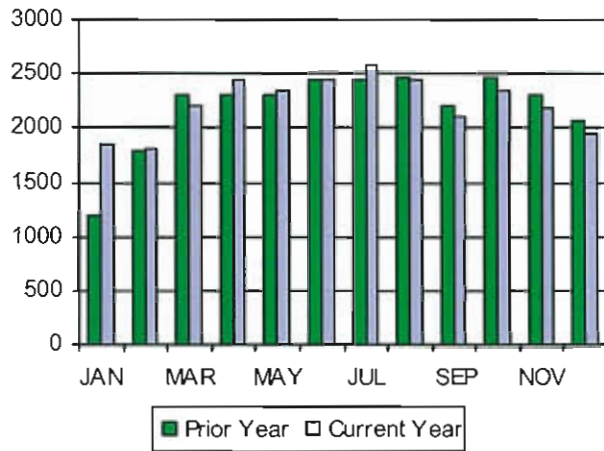
Footnotes

- 1 8 mg/l Nitrogen Compliance-Project includes Centrate Treatment & BNR expenditures.
- 2 WO10363,Cathodic Protection FY07-08, is closed and combined with WO10409. Prior year balance of \$215,000 is carried over to WO10409.
- 3 Additional appropriation of \$24,280 approved September 23, 2008, Agenda item #9A.
- 4 Additional appropriation of \$350,000 approved September 23, 2008, Agenda item #9B.
- 5 Additional appropriation of \$86,750 approved October 28, 2008, Agenda item #8B.
- 6 Transfer appropriation of \$155,320 from WO 10386 to WO 10413 approved November 25, 2008, Agenda item #7B.
- 7 WO10414 established to administer expenditure budgeted in operating accounts.

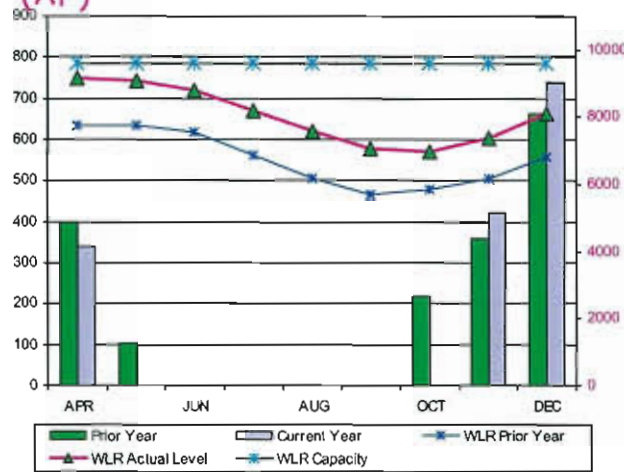
SPOTLIGHT ON LVMWD

2nd Quarter, FY08-09

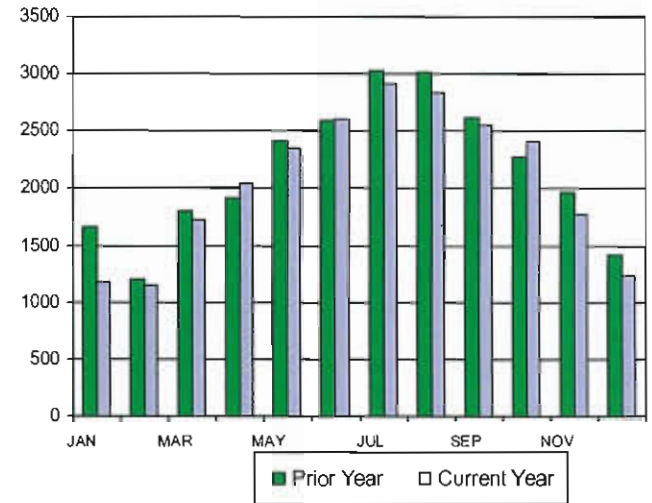
Purchases from MWD (AF)



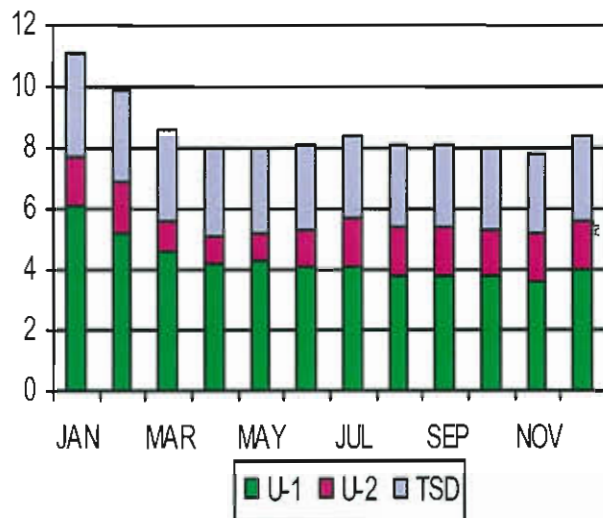
Las Virgenes Reservoir Purchases (AF)



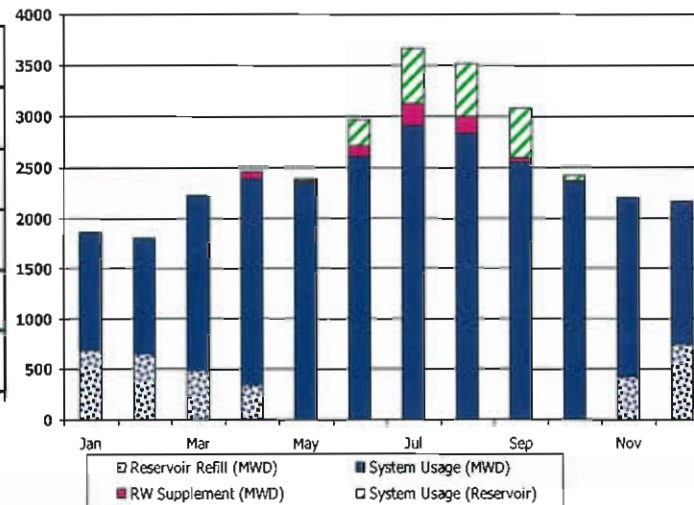
Deliveries to the Potable System (AF)



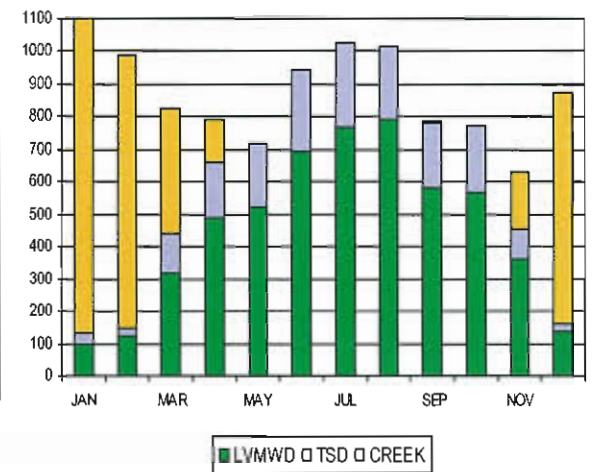
Tapia Sewage Flows (MGD)



Potable Water System Demands (AF)



Recycle Water Reuse/Disposal (AF)





January 27, 2009 Board Meeting

TO: Board of Directors
FROM: Resource Conservation and Public Outreach

Subject Water Conservation Rebate Program Changes

SUMMARY

The state budget crisis has impacted the LVMWD High Efficiency Clothes Washer (HECW) rebate program. The State has suspended payouts from a \$426,000 Proposition 50 grant for three District water conservation projects. The suspension immediately eliminates a \$200 per HECW grant-funded rebate program, which was used to supplement MWD's standard HECW rebate of \$135. Under the enhanced rebate program customers are eligible for a total rebate of \$335 per HECW. The District has updated its website with the new information, notified customer service staff of the change, and contacted local appliance retailers. In addition, a news release was distributed and posted on the website.

The State agency administering the grant (DWR) has indicated they believe the suspension will be resolved with the state budget impasse, but will not guarantee either future funding or retroactive payments for costs incurred by grantees during the suspension. Three options are presented in the discussion below.

RECOMMENDATION

- Staff recommends approval of Option 2, discontinuing the \$200 supplemental HECW rebate for applications received after January 23, 2009.

FINANCIAL IMPACT

- Depending on the option the District pursues, the financial impacts range from none to approximately \$88,200.

DISCUSSION

Last July the State approved a \$426,000 state grant to fund three District water conservation projects, and another conservation project underway in partnership with the City of Westlake¹. Last week the Department of Water Resources (DWR), the state administrative agent for the District's grant, notified project managers that, due to the state's on-going fiscal crisis, all

¹ The July 8, 2008 board memo "Proposition 50 Contribution and Memorandums of Understanding" includes grant program and project summaries. The grant agreement is No. 4600007659.



January 27, 2009 Board Meeting

TO: Board of Directors
FROM: Facilities and Operations

**Subject: Consultant Contracts Given Administrative Approval
For the Three Month Period Ending December 31, 2008**

None to report.

Marsha Eubanks, Administrative Services Officer, prepared this report.

 1/14/09

David R. Lippman Date
Director of Facilities and Operations

 1/15/09

John R. Mundy Date
General Manager

11C(1)