

Water Conservation Act of 2009

- AKA: 20 by 2020 or SBx7-7
- “It is the intent of the Legislature that the urban water use targets ... cumulatively result in a 20-percent reduction from the baseline daily per capita water use by December 31, 2020.”



Targets

- Method 1
 - 80% of baseline gpcd
- Method 2
 - Fixed indoor use, efficient outdoor use, 10% CII
- Method 3
 - 95% of hydrologic region
- Method 4
 - Calculates target using BMPs for indoor, outdoor & CII use



Baseline GPCD

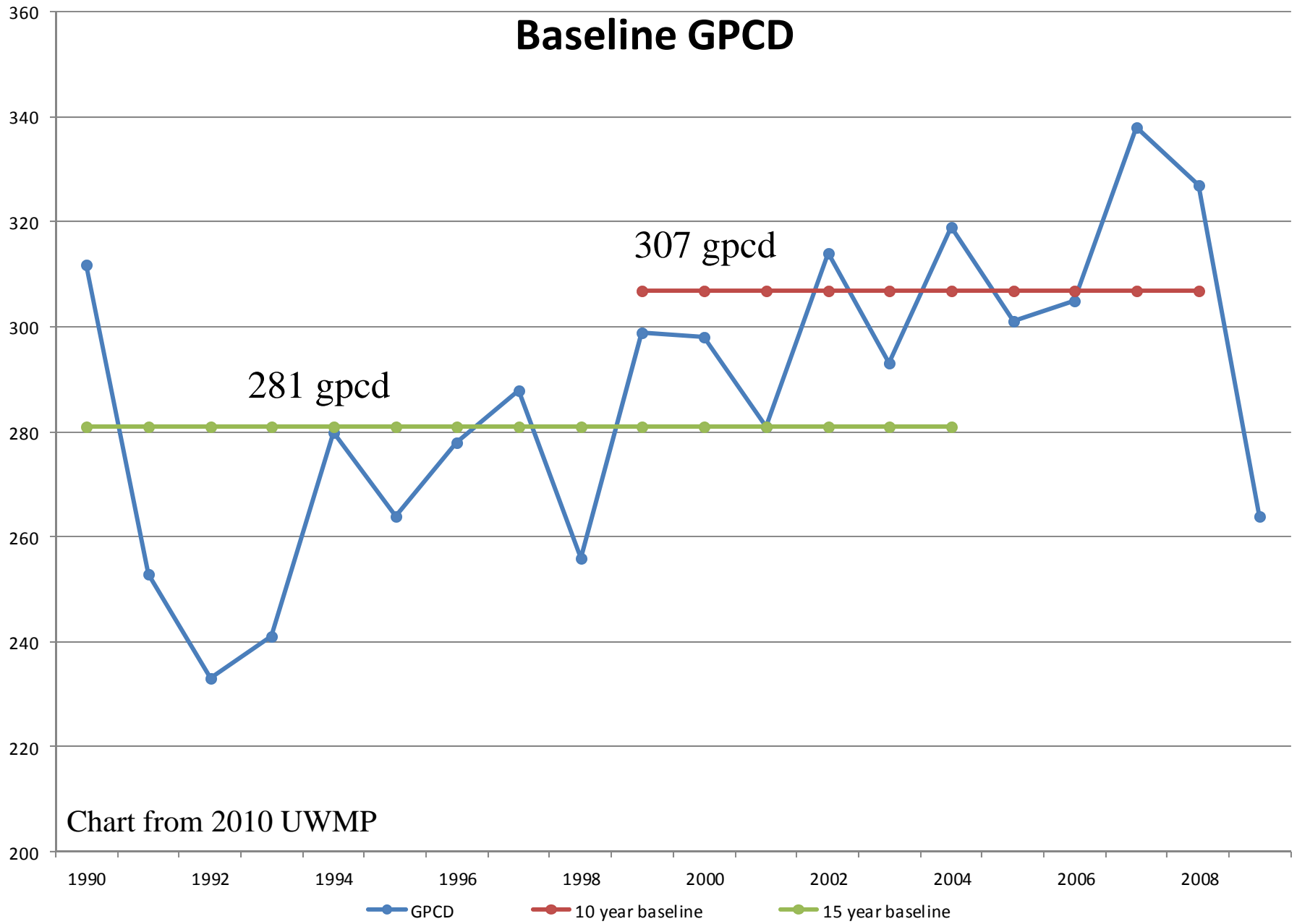


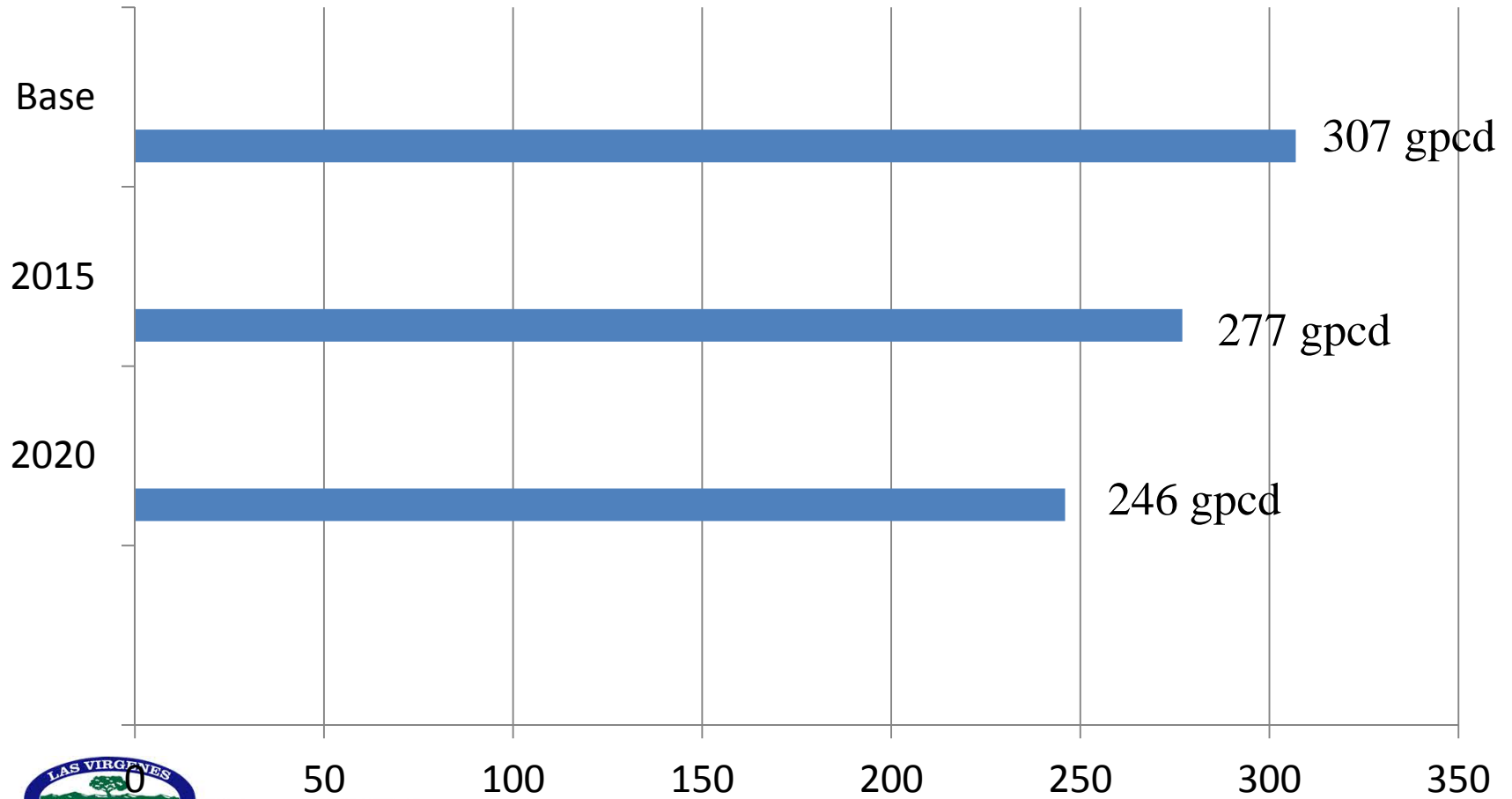
Chart from 2010 UWMP

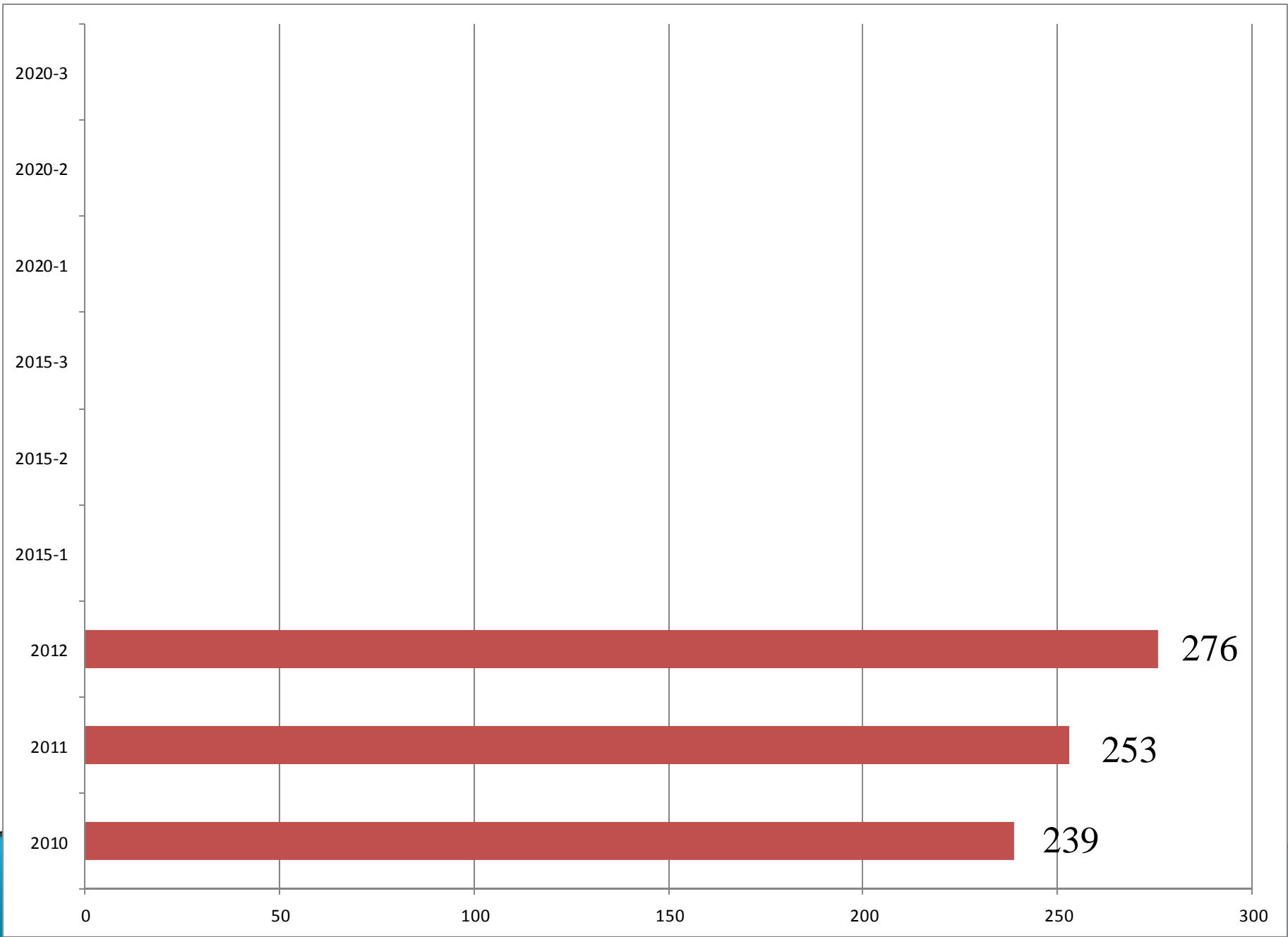
Targets

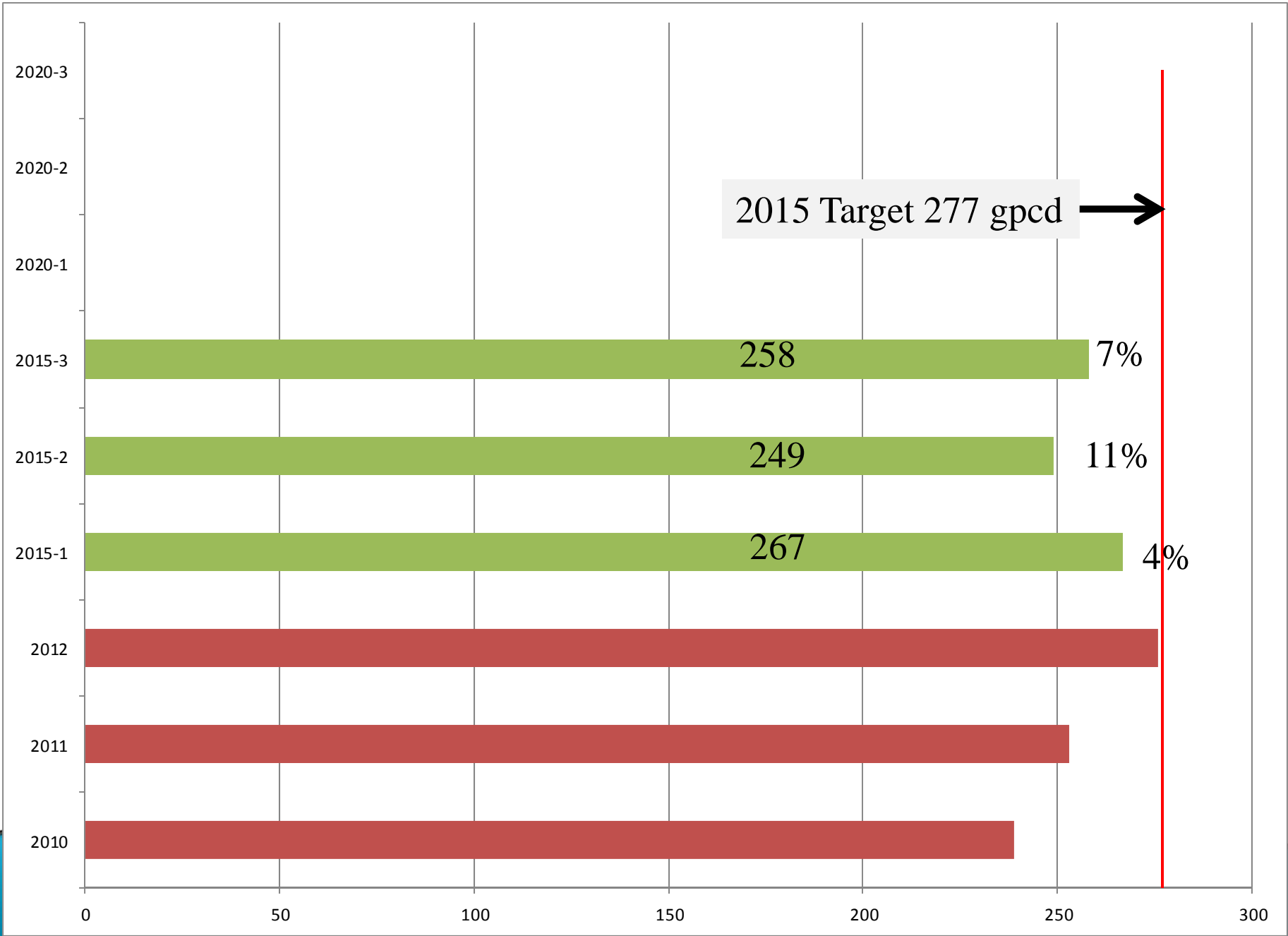
Method	Targets (gpcd)		Reduction from Baseline	
	2015	2020	2015	2020
1	277	246	10%	20%
2	-	-	-	-
3	225	142	27%	54%
4	276	244	10%	20%



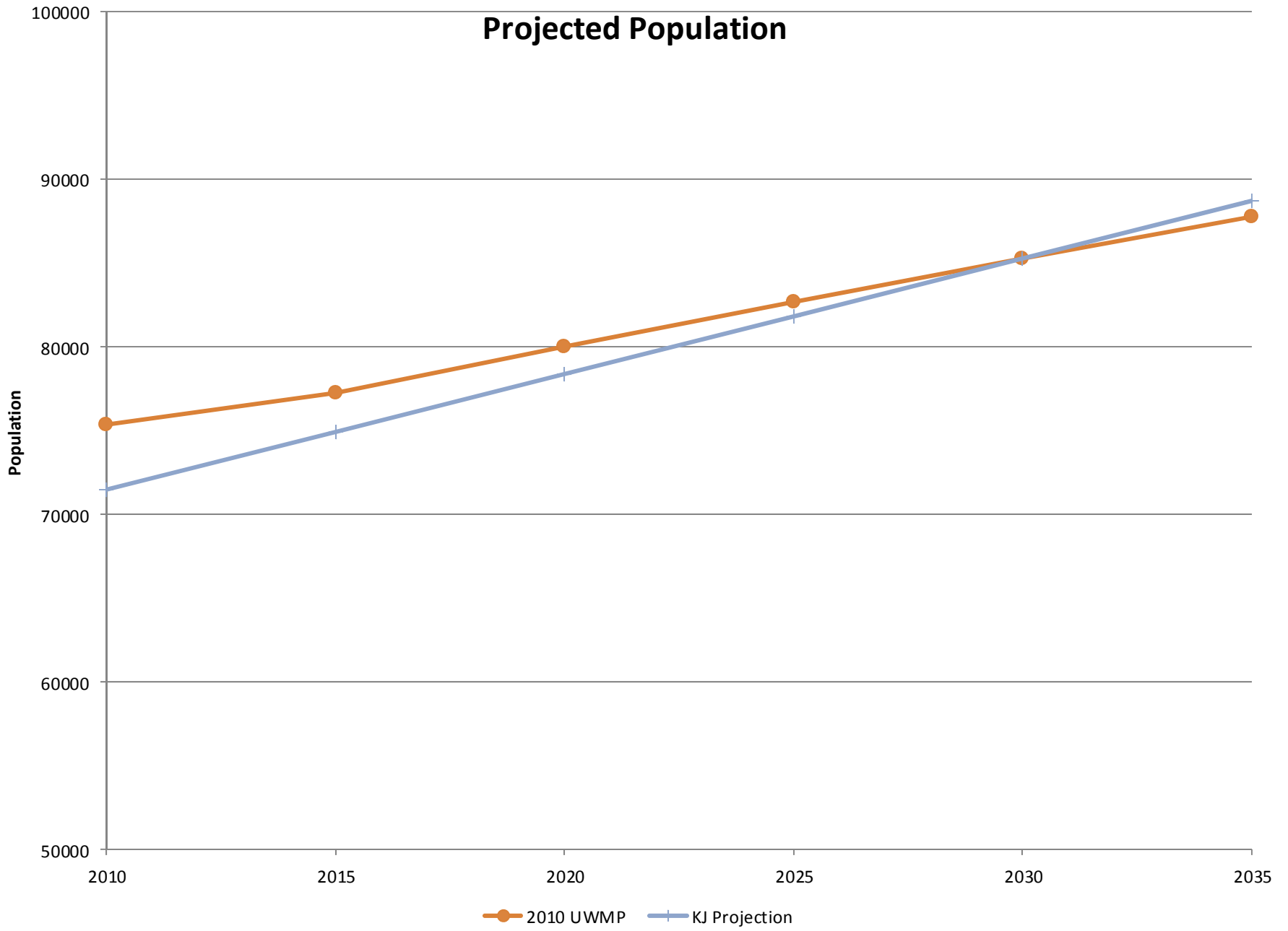
LVMWD Targets



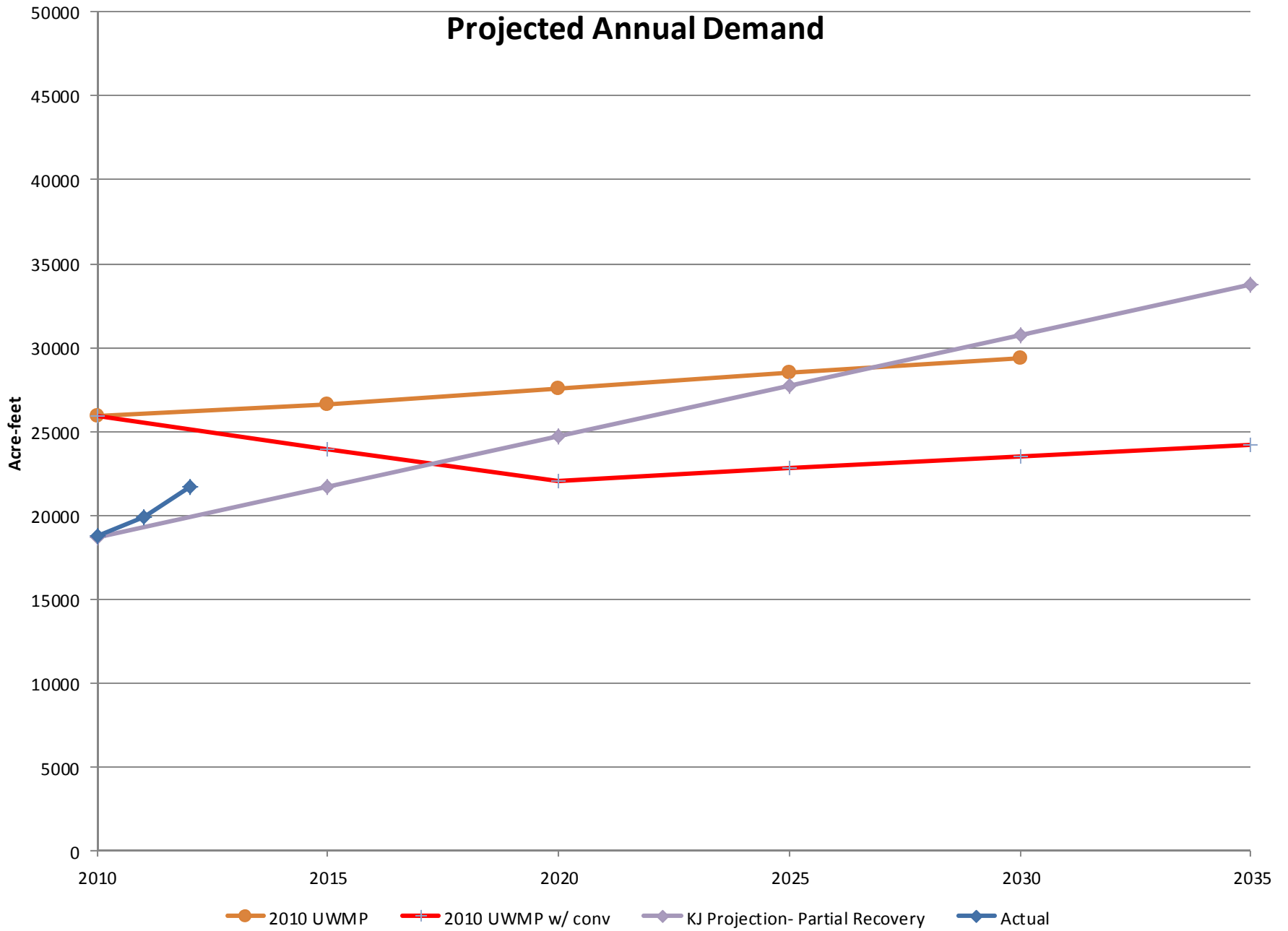


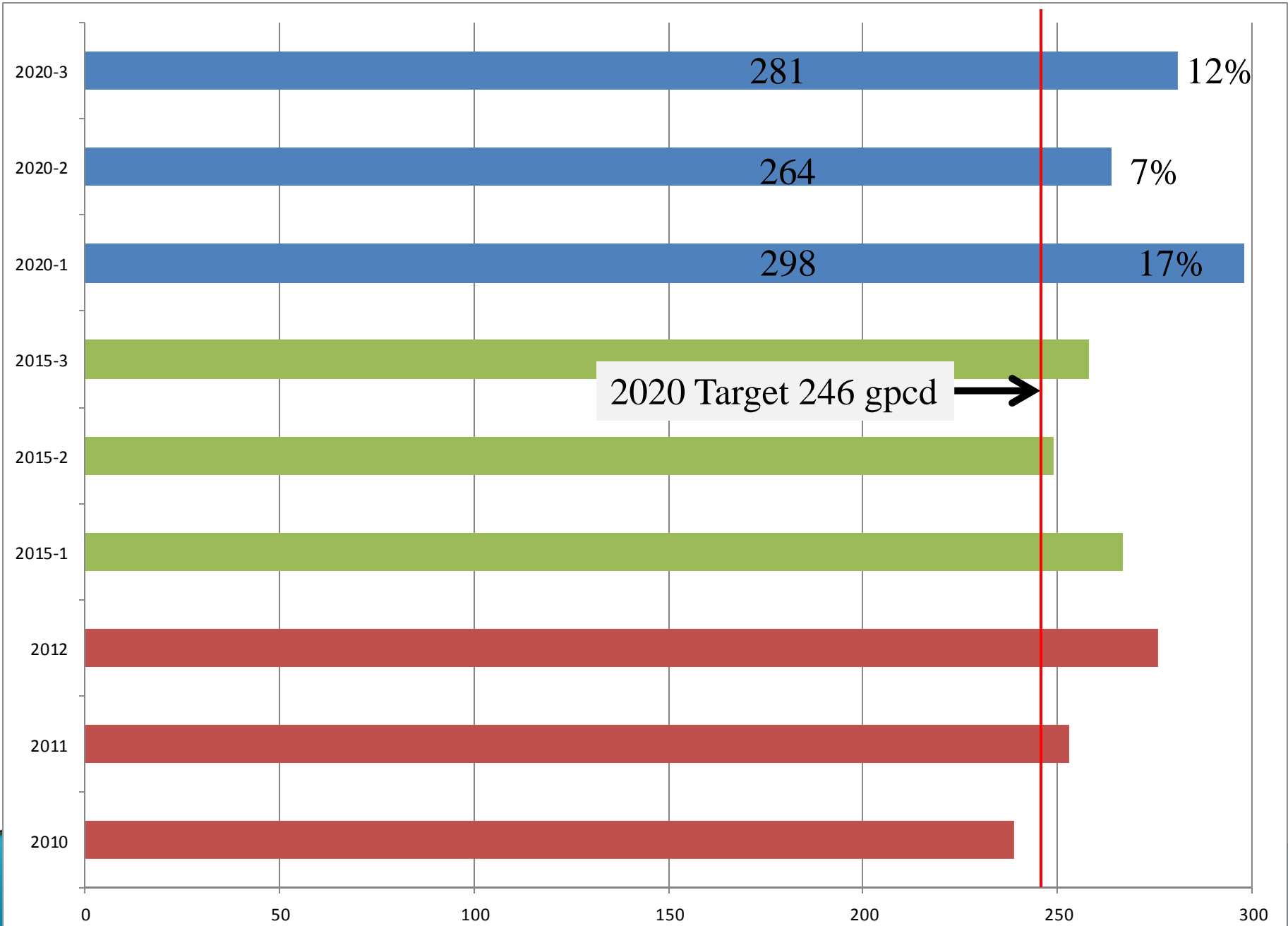


Projected Population



Projected Annual Demand





2020 Target 246 gpcd →

Compliance

- 10608.56
- “... water supplier is not eligible for a water grant or loan ... has not met the per capita reductions required pursuant to Section 10608.24...”
- 10608.24
 - (a) shall meet its interim urban water use target by December 31, 2015
 - (b) shall meet its urban water use target by December 31, 2020



2015 UWMP

- Supplier can consider when reporting compliance
 - Weather normalization between baseline period and compliance reporting period
 - Substantial changes to CII
 - Extraordinary events, i.e. fire suppression
- Supplier can update targets
- DWR will revise Method 4
- DWR will report to Legislature by December 31, 2016 on the progress of compliance

