

- NOTES**
1. USE ANTI-SEIZE ON ALL THREADS AND DRIVE SHAFT.
 2. CAULK ALL BOLTED SEAMS WITH G.E. SILPRUF WEATHER-PROOFING SEALANT, COLOR ALUM/GRAY, P/N BCS2009, OR EQUAL.
 3. TO PREVENT PERMANENT BENDS AT LIFT POINTS, SHAFTLESS AUGERS SHOULD BE LIFTED BY A PIPE IN THE CENTER OF THE AUGER WITH A LENGTH EQUAL TO THE LIFTED PART.
 4. ASSEMBLE CONVEYOR AS SHOWN. SEE A-3009 FOR ALIGNMENT PROCEDURE OF TROUGH SECTION. VERIFY DIMENSIONS AFTER ASSEMBLY.
 5. DISASSEMBLE AT THIS POINT FOR SHIPMENT. BAG AND TAG HARDWARE. COVER ALL OPENINGS WITH 1/2" PLYWOOD, PARTICLE BOARD, OR EQUAL. WIRE TO CONVEYOR. PROTECT ALL EXTERNAL THREADS TO PREVENT DAMAGE DURING SHIPMENT. TAG TROUGH SECTIONS AS SHOWN.
 6. CUT AUGER AT THIS POINT. REMOVE PAINT 3" FROM SPLICE. PREPARE FOR FIELD WELDING PER A-3003. SHIP AUGER SECTIONS IN TROUGH SECTIONS.
 7. IF LINER OVERLAPS FIELD JOINT, DISASSEMBLE SO LEAST AMOUNT OF LINER OVERHANGS. BAG AND TAG HARDWARE.
 8. REFERENCE YIELD ASSEMBLY DRAWING: 9129-104.

REV.	DATE	BY	CHK	APPR	REVISIONS
6/2/92	HL				
THIS DOCUMENT AND ITS CONTENTS ARE THE PROPERTY OF PURAC ENGINEERING, INC. AND MUST NOT BE COPIED, REPRODUCED, TRANSMITTED OR DISCLOSED TO ANY THIRD PARTY WITHOUT THE CONSENT OF PURAC ENGINEERING, INC. CONTRAVENTION WILL BE PROSECUTED.					TOLERANCE: EXCEPT AS SPECIFIED NORMAL: ± 1/16" HOLES ± .015" NOT TO BE ACCUMULATIVE
PURAC PURAC ENGINEERING, INC. 5301 LIMESTONE ROAD, SUITE 126 WILMINGTON, DELAWARE 19808 (302) 239-8431 FAX (302) 239-9085					SHAFTLESS SCREW CONVEYOR (Ø18") 2-C-104 SHOP ASSEMBLY
SIZE	DRAWING NO.			REV.	
D	9129-076			-	

REF. Z-C-104

P/L REVISIONS	ASSEMBLY DRAWING	D9129-076	PURAC ENGINEERING, INC.										PAGE: 3	REV A							
			PARTS LIST																		
LINE	REFERENCE NO.	REV. CODE	BY	DATE	CHK	DATE	APPR	DATE	REV. CODE	BY	DATE	CHK	DATE	APPR	DATE	ENGINEERING PART NUMBER	DWG REV	MAT'L SPEC	SOURCE	NOTES	
		TOTAL QUANTITY																			
A	17																				
B																					
C	18																				
D																					
E	19																				
F																					
G	20																				
H																					
A	J 21																				
K																					
A	L 22																				
M																					
N	23																				
P																					
R	24																				

PART NO. D9129-076

DESCRIPTION

3 ϕ 18" SEMI FLANGE COVER

B 6027

A36

1 ϕ 18" SEMI FLANGE COVER

B 9129-149

A36

1 ϕ 18" SEMI FLANGE COVER

B 9129-150

A A36

1 ϕ 18" SEMI FLANGE COVER

B 9129-151

A A36

1 ϕ 18" SEMI FLANGE COVER

B 9129-152

A36

1 ϕ 18" TROUGH LINER

A 9129-390

XYLETHON

REF. - Z-C-104

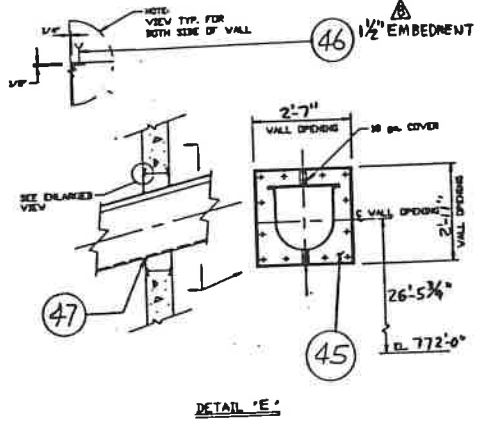
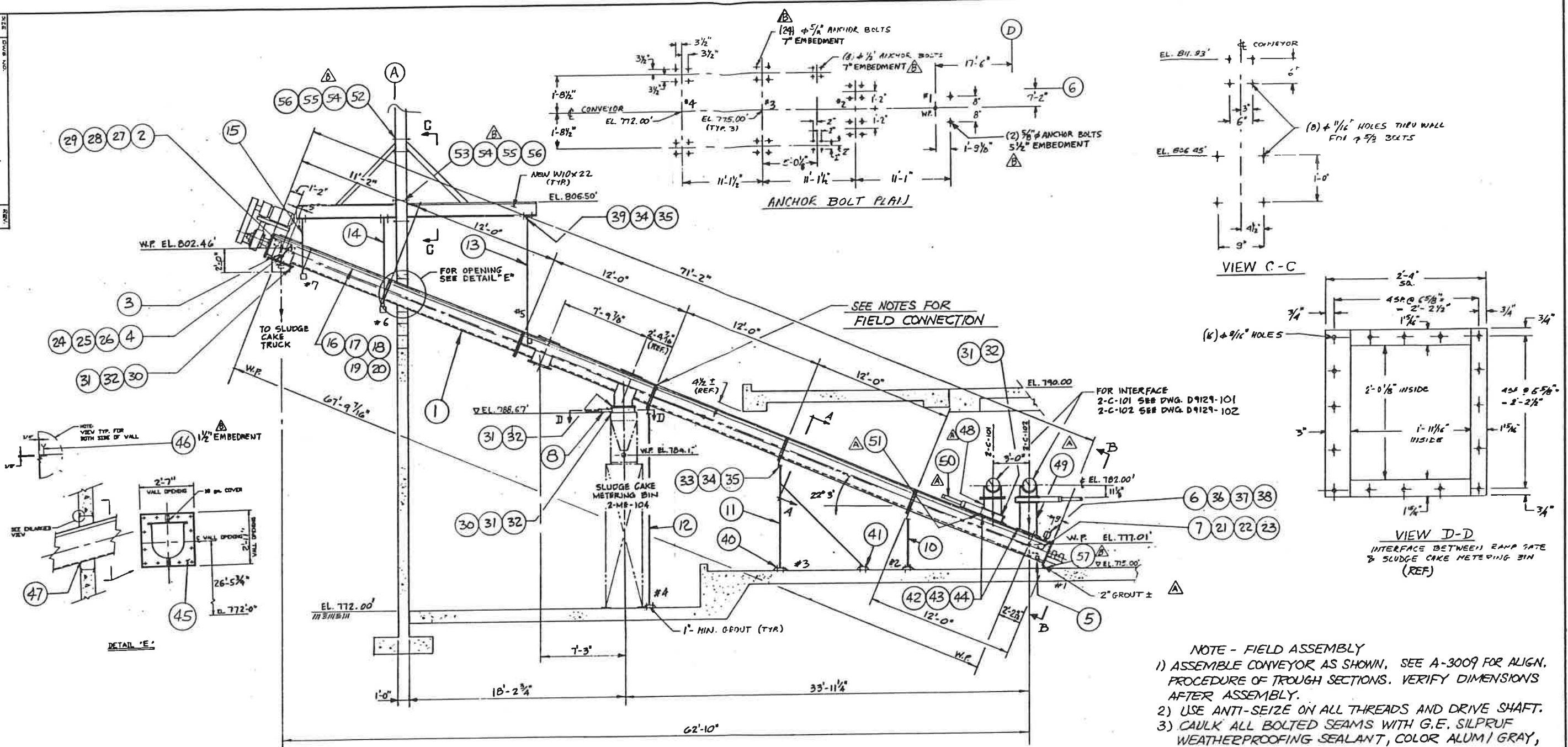
P/L REVISIONS	ASSEMBLY DRAWING	D9129-076	TOTAL QUANTITY										REV. CODE	BY	DATE	CHK	DATE	APPR	DATE	REV. CODE	BY	DATE	CHK	DATE	APPR	DATE	PURAC ENGINEERING, INC.	PAGE: A	REV	
			A	B	C	D	E	F	G	H	J	REV. CODE																		BY
LINE	REFERENCE NO.	DESCRIPTION	DWG SIZE	ENGINEERING PART NUMBER	DWG REV	MAT'L SPEC	SOURCE	NOTES																						
A	25	15 ϕ 18" TROUGH LINER	A	6095		XUETH ₃₀₀																								
B																														
C	26																													
D																														
E	27	1 ~ " ~	A	9129-391		-11-																								
F																														
G	28	1 ~ " ~	A	9129-392		-11-																								
H																														
J	29	ADHESIVE BACKED CLOSED CELL FOAM 2" x 1/8" THK																												
K																														
L	30																													
M																														
N	31	1 ϕ 18" END PLATE - TAIL	C	6052		#36																								
P																														
R	32	2 TAIL BEARING	B	4003																										

PART NO. D9129-076

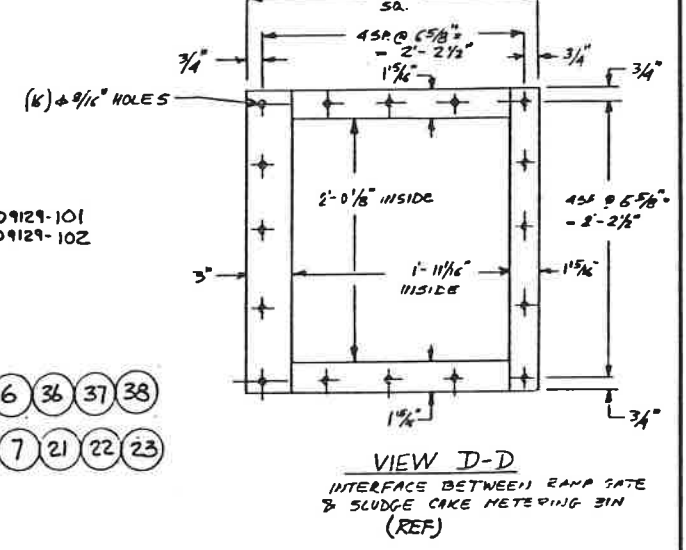
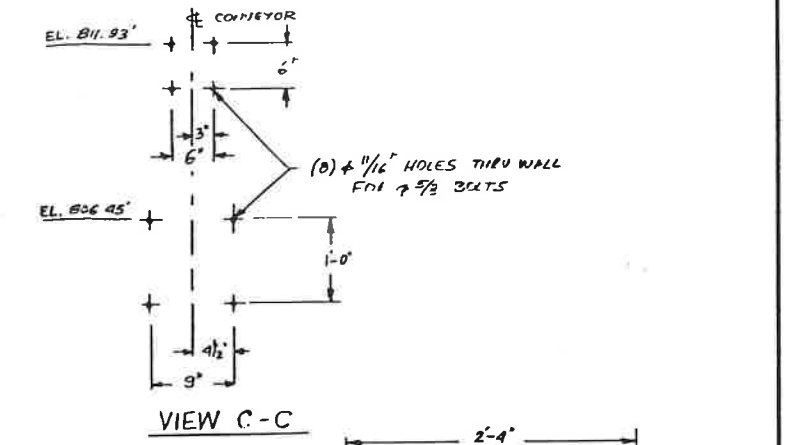
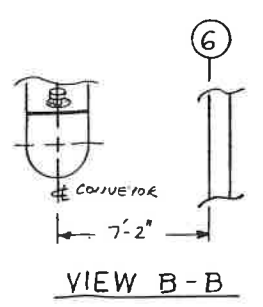
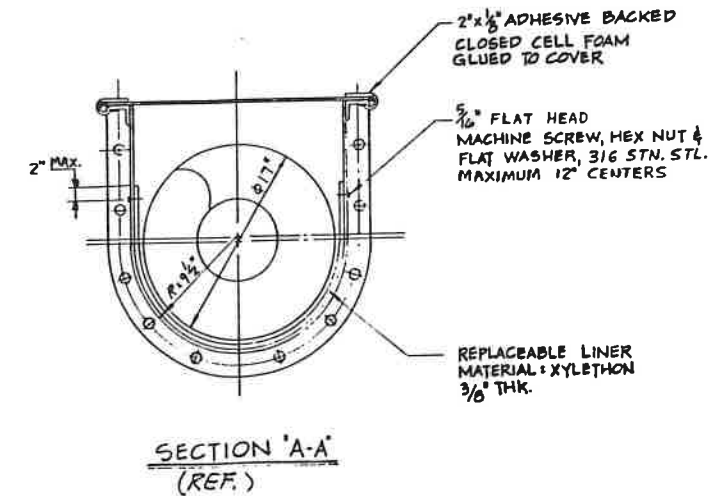
PURAC ENGINEERING, INC.
PARTS LIST

PAGE: A
PROJ. NO. 9129

D
 DWG. NO.
 D9129-104
 B



ELEVATION VIEW M
 004



NOTE - FIELD ASSEMBLY
 1) ASSEMBLE CONVEYOR AS SHOWN, SEE A-3009 FOR ALIGN. PROCEDURE OF TROUGH SECTIONS. VERIFY DIMENSIONS AFTER ASSEMBLY.
 2) USE ANTI-SEIZE ON ALL THREADS AND DRIVE SHAFT.
 3) CAULK ALL BOLTED SEAMS WITH G.E. SILPRUF WEATHERPROOFING SEALANT, COLOR ALUM/GRAY, P/N SCS 2009, OR EQUAL.

FIELD ASSEMBLY

THIS DOCUMENT AND ITS CONTENTS ARE THE PROPERTY OF PURAC ENGINEERING AND MUST NOT BE COPIED, REPRODUCED, TRANSMITTED OR DISCLOSED TO ANY THIRD PARTY WITHOUT THE CONSENT OF PURAC ENGINEERING INC. CONTRAVENTION WILL BE PROSECUTED.

TOLERANCES UNLESS OTHERWISE SPECIFIED		PURAC		LAS VIRGENES, CALIFORNIA	
ANGLES ± 1°		PURAC ENGINEERING, INC.		LAS VIRGENES MWD	
FRACTIONS ± 1/32"		5301 LIMESTONE ROAD, SUITE 128		SHAFTLESS SCREW CONVEYOR	
XX ± .01		WILMINGTON, DELAWARE 19808		(φ 18") 2-C-104	
.XXX ± .005		302 239-9431 FAX (302) 239-9083		DEWATERING BUILDING	
REV.	BY	DATE	REVISIONS	PROJECT NO.	DRAWING NO.
B	BE	9-3-92	ADDED ANCHOR BOLT EMBEDMENT	9129	D9129-104
A	BE	8-7-92	ADDED ITEM # 52 AND 57	REV.	B
			ADDED ITEM # 54, 49, 50, & 51		
SCALE	NOTE	ISSUE DATE	APPROVED	CHECKED	DRAWN

B/M REVISIONS

ASSEMBLY DRAWING

9129-104

LINE REFERENCE NO.

TOTAL QUANTITY

REV. CODE	BY	DATE	CHK	DATE	APPR	DATE	REV. CODE	BY	DATE	CHK	DATE	APPR	DATE	ENG. PART NUMBER	DWG. SIZE	DWG. REV	MAT'L SPEC	SOURCE	NOTES
A	#	7/25					E							D 9129-076	D				
B	DSF	8/20/92					F												
C							G												
D							H												
DESCRIPTION																			
A	1													1 1/8" SCREW CONVEYOR 2-C-104					
B																			
C	2													1 SAFETY PULL CORD SWITCH PCRS SINGLE END RIGHT 2506	B				
D																			
E	3													1 PLUG CHUTE PROBE MODEL 20-39	B				
F																			
G	4													1 PLUG CHUTE - CONTROL UNIT MODEL 20-38	B				
H																			
J	5													1 2" DRAIN VALVE W/PLUG	B				
K																			
L	6													1 MOTION FAILURE ALARM MSP-12	B				
M																			
N	7													1 MOTION FAILURE ALARM AMPLIFIER	B				
P																			
R																			

PURAC ENGINEERING, INC.

BILL OF MATERIAL

PROJECT NAME 1/8" SCREW CONVEYOR 2-C-104

PAGE: 1

PROJ. NO. 9129

REV A

B/M REVISIONS

ASSEMBLY DRAWING

09/29-104

LINE REFERENCE NO.

TOTAL QUANTITY

REV. CODE
DATE
CHK
BY

DATE
CHK
DATE
APPR
DATE
REV. CODE

DATE
CHK
DATE
APPR
DATE
REV. CODE

DATE
CHK
DATE
APPR
DATE
REV. CODE

DATE
CHK
DATE
APPR
DATE
REV. CODE

DATE
CHK
DATE
APPR
DATE
REV. CODE

DATE
CHK
DATE
APPR
DATE
REV. CODE

DATE
CHK
DATE
APPR
DATE
REV. CODE

DATE
CHK
DATE
APPR
DATE
REV. CODE

DATE
CHK
DATE
APPR
DATE
REV. CODE

DATE
CHK
DATE
APPR
DATE
REV. CODE

DATE
CHK
DATE
APPR
DATE
REV. CODE

DATE
CHK
DATE
APPR
DATE
REV. CODE

DATE
CHK
DATE
APPR
DATE
REV. CODE

DATE
CHK
DATE
APPR
DATE
REV. CODE

DESCRIPTION

DWG SIZE

ENGINEERING PART NUMBER

MAT'L SPEC

SOURCE

NOTES

A

1

RAMP VALVE

MODEL -

PEBCO D1654

02-V-60

B

C

D

E

1

SUPPORT

F

G

1

SUPPORT

H

J

1

SUPPORT

L

1

SUPPORT

N

1

SUPPORT

R

1

SUPPORT

REV

A

PAGE: 2

PROJ. NO. 9/29

PURAC ENGINEERING, INC.

BILL OF MATERIAL

PROJECT NAME

18φ SCREW CONVEYOR

2-C-104

DWG REV

MAT'L SPEC

SOURCE

NOTES

02-V-60

9205-S1 DET.4

2C104-2

9205-S1 DET.4

9205-S7 DET.3

2C104-3

9205-S1 DET.4

2C104-4

9205-S8-DET4

2C104-5

9205-S5-DET.1

2C104-6

REV

A

PAGE: 2

PROJ. NO. 9/29

PURAC ENGINEERING, INC.

BILL OF MATERIAL

PROJECT NAME

18φ SCREW CONVEYOR

2-C-104

DWG REV

MAT'L SPEC

SOURCE

NOTES

02-V-60

9205-S1 DET.4

2C104-2

9205-S1 DET.4

9205-S7 DET.3

2C104-3

9205-S1 DET.4

2C104-4

9205-S8-DET4

2C104-5

9205-S5-DET.1

2C104-6

B/M REVISIONS		ASSEMBLY DRAWING	D9129-104		TOTAL QUANTITY		REV. CODE	BY	DATE	CHK	DATE	APPR	DATE	REV. CODE	BY	DATE	CHK	DATE	APPR	DATE	PURAC ENGINEERING, INC.		PAGE: 3	REV A	
LINE	REFERENCE NO.						ORIG ISSUE							E	F	G	H	J					PROJ. NO. 9129		
							A	B	C	D	DESCRIPTION										PROJECT NAME	DWG REV	MAT'L SPEC	SOURCE	NOTES
A	16					11																	1/8 φ SCREW CONVEYOR		
B																							2-C-104		
C	17					22																			
D																									
E	18					11																			
F																									
A	G 19					4																			
A	J 20					72																			
K																									
L																									
M																									
N																									
P																									
R																									

72) 3/32 AIRCRAFT CABLE
 7x7 PREFORMED, GALVANIZED
 CABLE W/ORANGE VINYL COATING

4 CABLE END CLAMP

11 1/2 NOM. LOCKWASHER

22 1/2-13HEX NUT

11 1/2" EYEBOLT - 5" LG

B/M REVISIONS

ASSEMBLY DRAWING

D9129-104

LINE REFERENCE NO.

TOTAL QUANTITY

REV. CODE	BY	DATE	CHK	DATE	APPR	DATE	REV. CODE	BY	DATE	CHK	DATE	APPR	DATE	DWG SIZE	ENGINEERING PART NUMBER	MAT'L SPEC	SOURCE	NOTES	
A	#	7/28					E												
B	#	8/7/92					F												
C	BE	11/19/92					G												
D							H												
E							J												
DESCRIPTION																			
A	42	36	1/2-13UNC x 1 1/2 LG, HEX HD, BOLT																
B																			
C	43	36	1/2-13 HEX NUT																
D																			
E	44	36	1/2 NOM. LOCKWASHER																
F																			
G	45	1	FRAME & COVER																
H																			
B	46	16	1/4 ANCHOR BOLT, REDHEAD x 2 1/4 LG																
K																			
L	47	AR	ADHESIVE BACKED CLOSED CELL FOAM 2" x 1/8" THK																
M																			
A	N 48	1	CHUTE - FROM 2-C-101 TO 2-C-104																
P																			
A	R 49	1	CHUTE - FROM 2-C-102 TO 2-C-104																

PURAC ENGINEERING, INC.

BILL OF MATERIAL

PROJECT NAME: 18 φ SCREW CONVEYOR 2-C-104

PAGE: 7

PROJ. NO. 9129

REV B

ZINC PLATED

