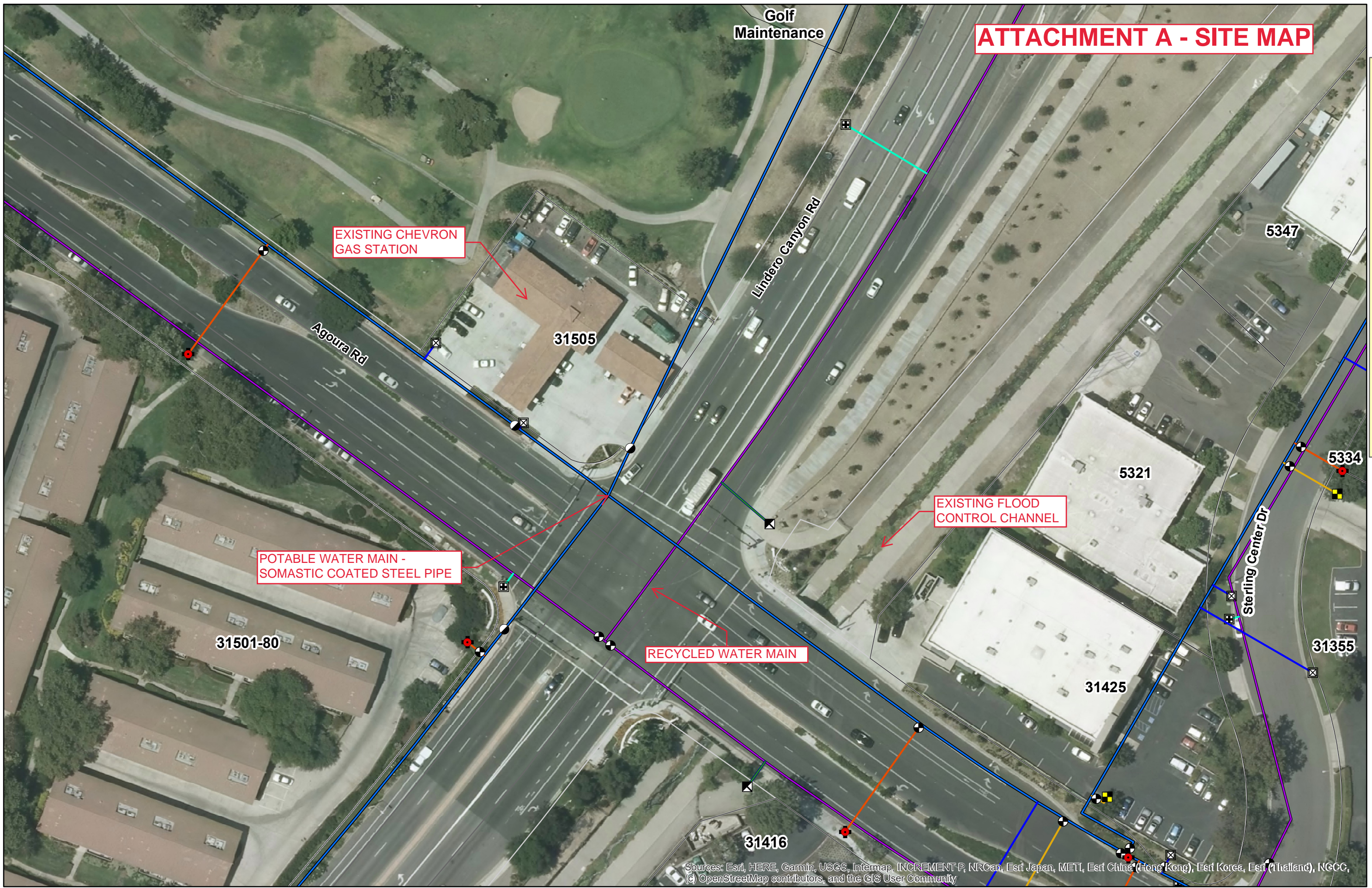


ATTACHMENT A - SITE MAP

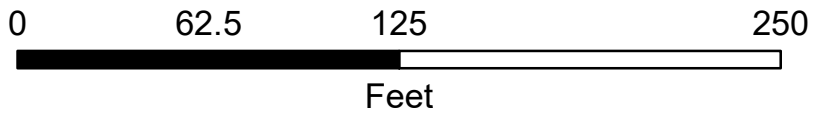


EXISTING CHEVRON GAS STATION

POTABLE WATER MAIN - SOMASTIC COATED STEEL PIPE

RECYCLED WATER MAIN

EXISTING FLOOD CONTROL CHANNEL



1 inch = 62.854463 feet

Las Virgenes Municipal Water District is not responsible for the accuracy of this presentation. This presentation is for illustrative purposes only. Verify the physical location of all property lines, water lines and ancillary information prior to use.



Sources: Esri, HERE, Garmin, USGS, Intermap, INCREMENT P, NRCan, Esri Japan, METI, Esri China (Hong Kong), Esri Korea, Esri (Thailand), NGCC, (c) OpenStreetMap contributors, and the GIS User Community