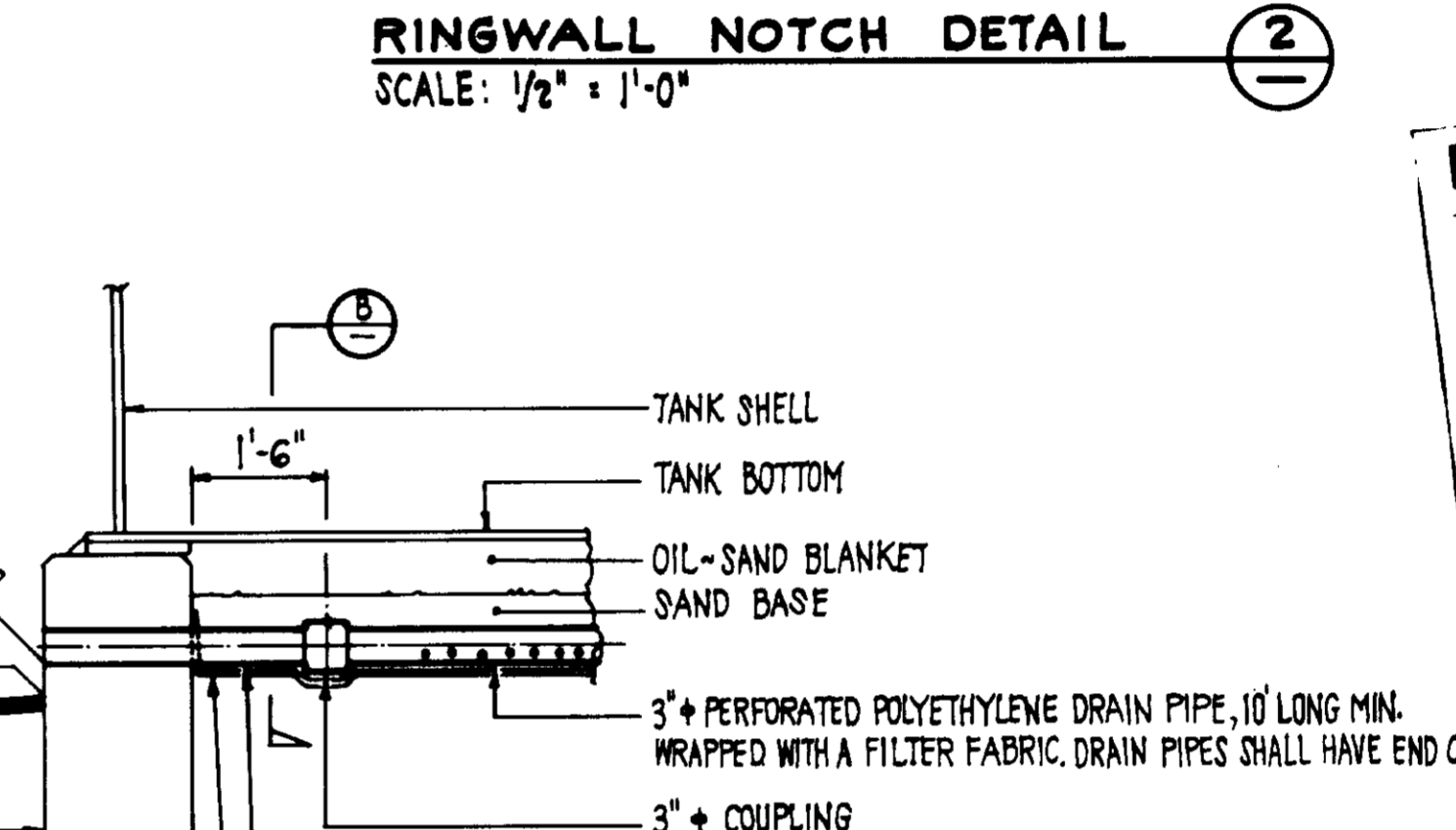
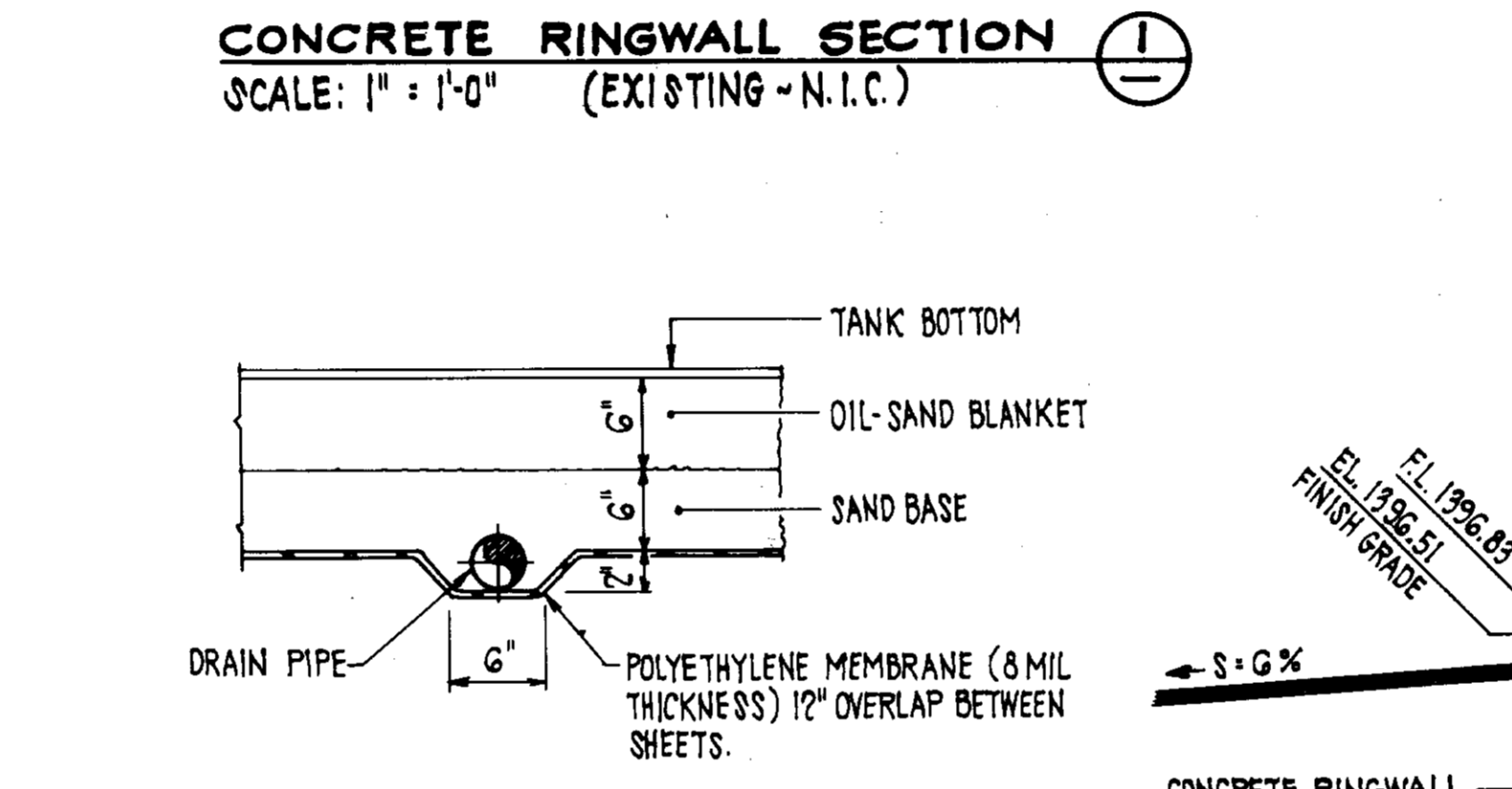


NOTES

- TO PREVENT WATER FROM ENTERING EXPOSED BEDDING PLANES DURING CONSTRUCTION AND PRIOR TO FINAL PAVING, THE PREVIOUS GRADING CONTRACT INCLUDED A THIN, TEMPORARY ASPHALT SEAL OVER THE PAD AREA. THE CONTRACTOR SHALL PROTECT AND MAINTAIN THE INTEGRITY OF THE ASPHALT SEAL UNTIL ITS REMOVAL. THE ASPHALT SEAL WITHIN THE RINGWALL SHALL BE REMOVED JUST PRIOR TO PLACING THE SAND BASE AND UNDERDRAIN. THE ASPHALT SEAL OVER THE PERIMETER ROAD AND LOCATION OF FUTURE TANK NO. 2 SHALL BE REMOVED JUST PRIOR TO PREPARING THE SUBGRADE FOR THE PAVEMENT SECTION. TRENCHES FOR THE INLET-OUTLET PIPELINE AND THE STORM DRAIN MUST BE PATCHED.

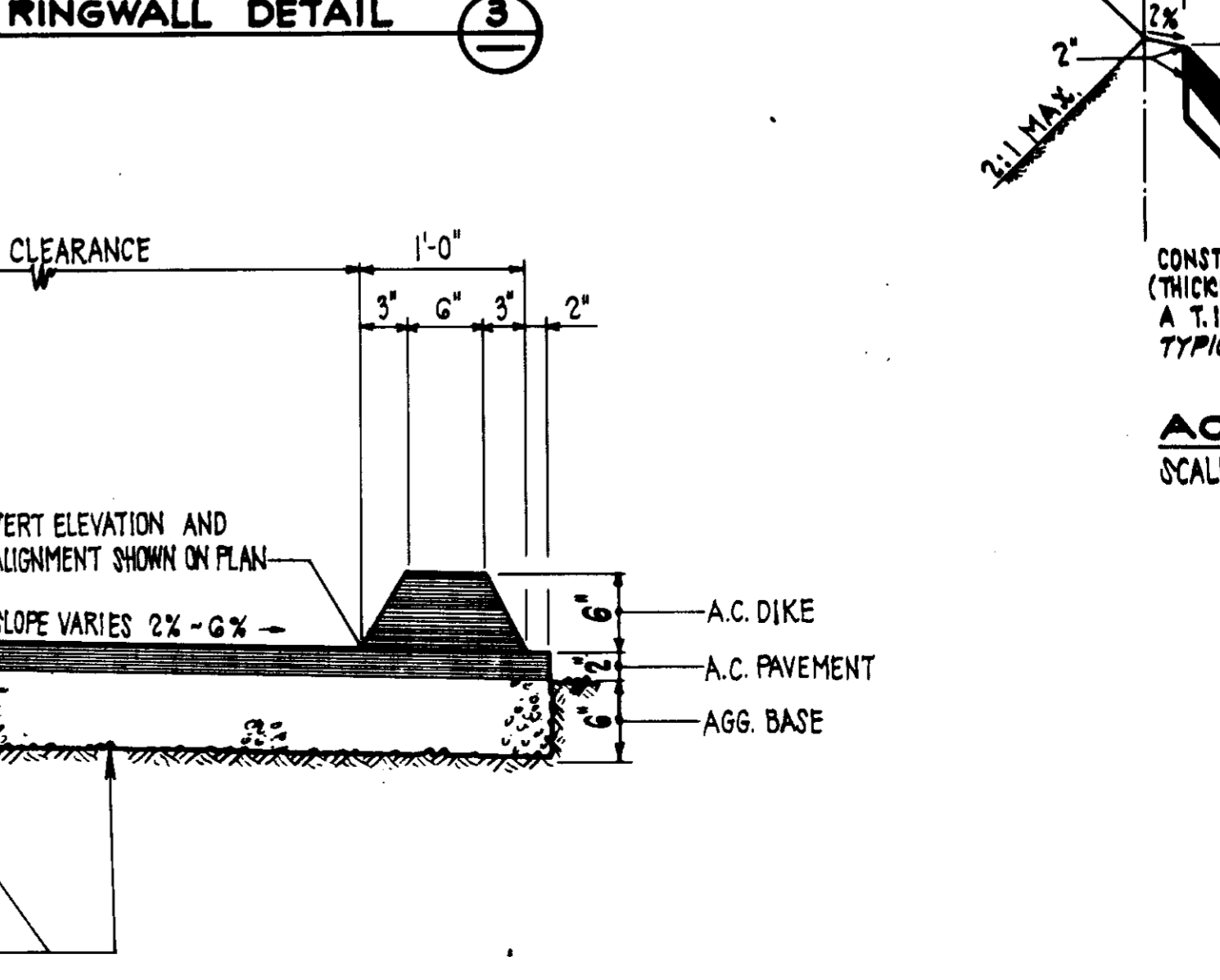
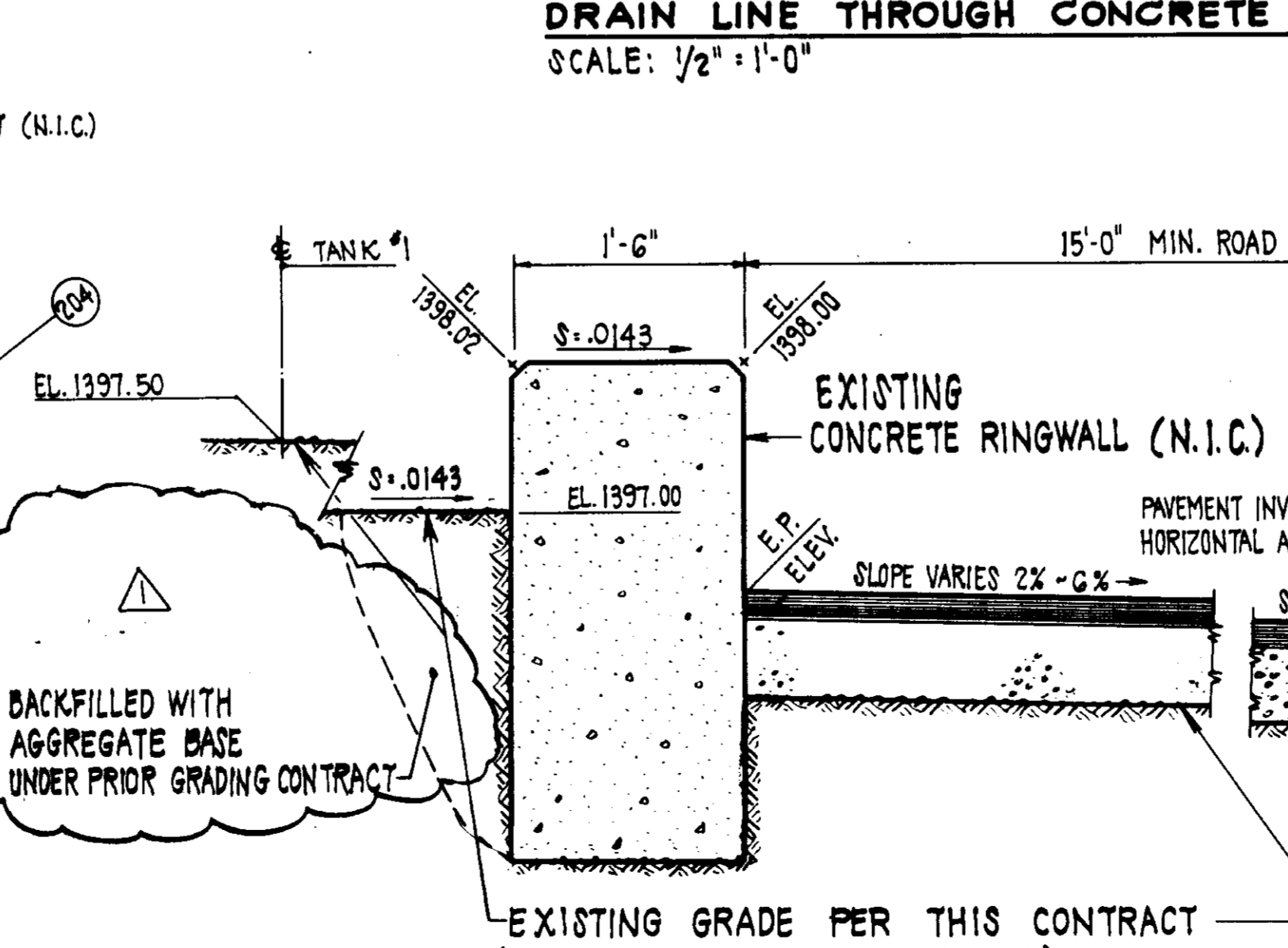
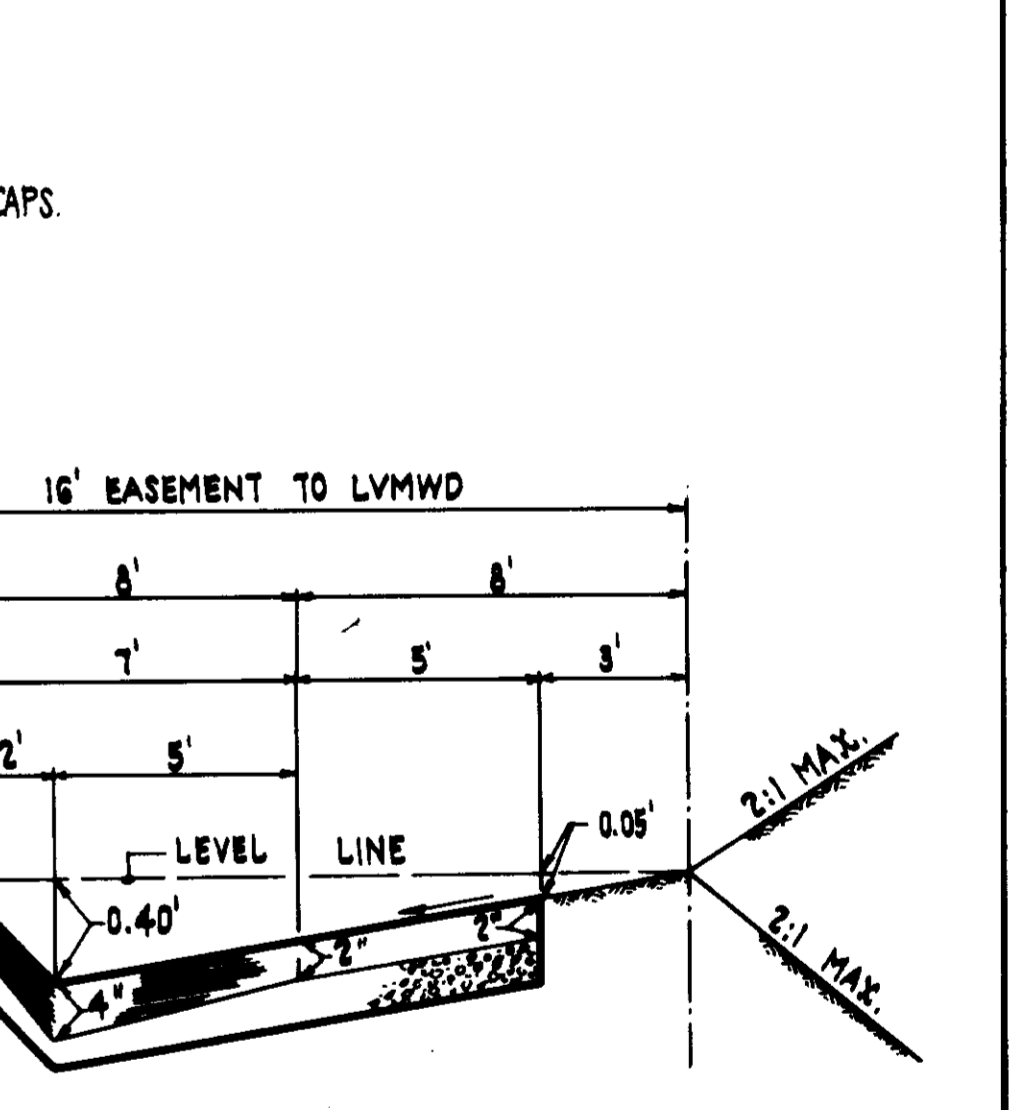
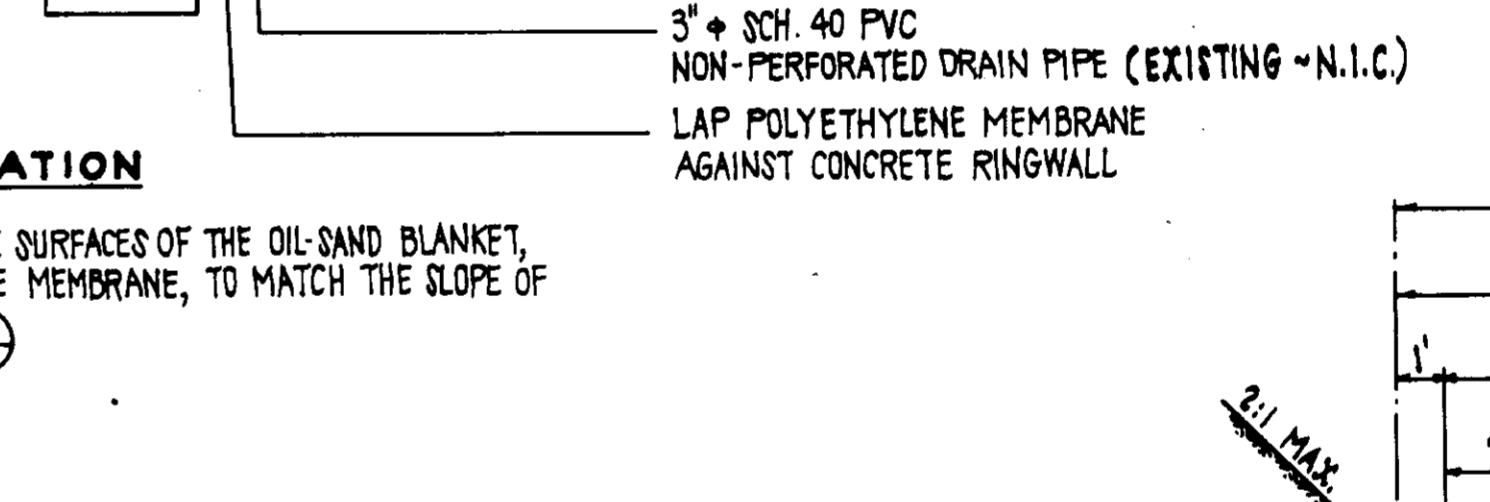
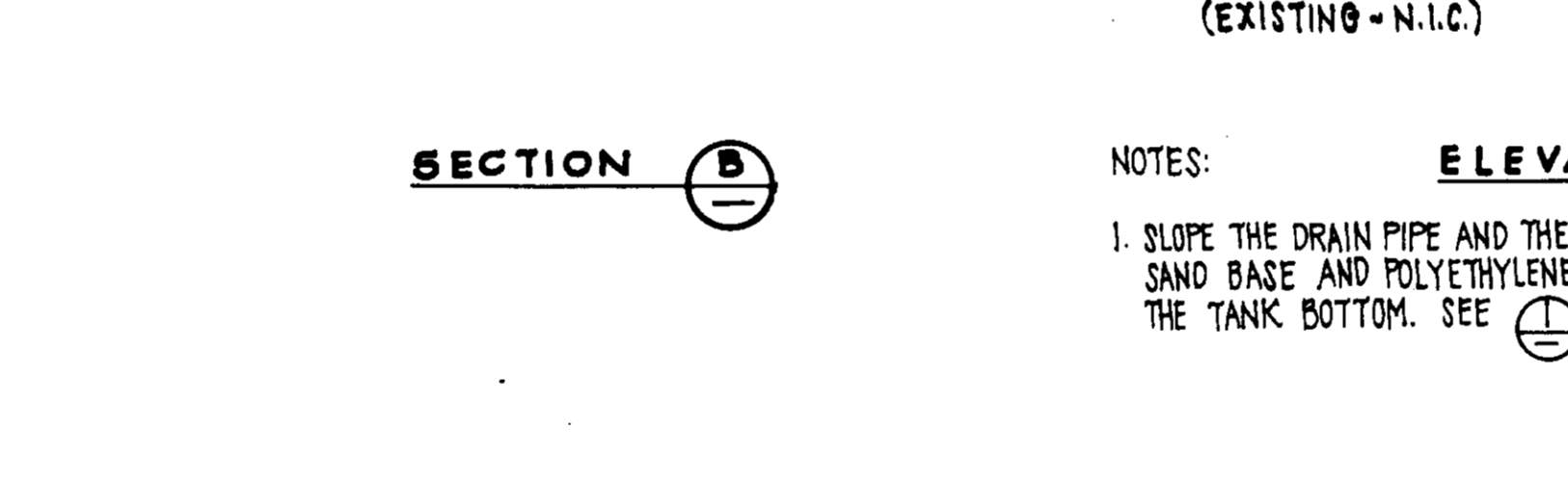
N.I.C. ⚠



RECORD DRAWING

THIS RECORD DRAWING APPLIES ONLY TO THOSE FACILITIES CONSTRUCTED UNDER THE CONTRACT IDENTIFIED IN THE TITLE BLOCK. THIS DRAWING HAS BEEN PREPARED ON THE BASIS OF THE INFORMATION FURNISHED BY THE CONTRACTOR AND THE CONSTRUCTION INSPECTOR.

CONSTR. INSP. JAU AGENCY EEL DATE 2/26/88
 DRAFTED BY JPH AGENCY BCC DATE 12/18/87
 PROJ. ENGR. JAU AGENCY BCC DATE 12/18/87



STORM DRAIN GEOMETRY

POINT	NORTHING	EASTING	BEARING	DISTANCE	
201	C.B. NO.1	2 104.63	1 872.03	N 60° 36' 14" E	93.65'
202	C.B. NO.2	2 150.58	1 953.60	S 32° 54' 49" E	43.24'
203	4' 08" ANGLE PT.	2 114.28	1 977.10	S 37° 02' 49" E	125' ±
204	F.E.S.	2 015 ±	2 052 ±		

NOTE: ELEVATIONS SHOWN ARE FINISH GRADE TOP OF PAVEMENT AT 1/2 POINTS AROUND TANKS. ELEVATIONS AROUND TANK NO. 2 ARE AT FUTURE RINGWALL O.D. (61'-6"). FOR EXISTING GRADES SEE SHEET 9.

HORIZONTAL & VERTICAL CONTROL AT TANK SITE TO BE PROVIDED BY CARL CHAPMAN & ASSOC. UNDER PREVIOUS GRADING CONTRACT.

TANK SITE LAYOUT
SCALE: 1" = 20'

05633

LAS VIRGENES MUNICIPAL WATER DISTRICT
 JED SMITH PUMP STATION AND TANK
 TANK SITE LAYOUT AND RINGWALL

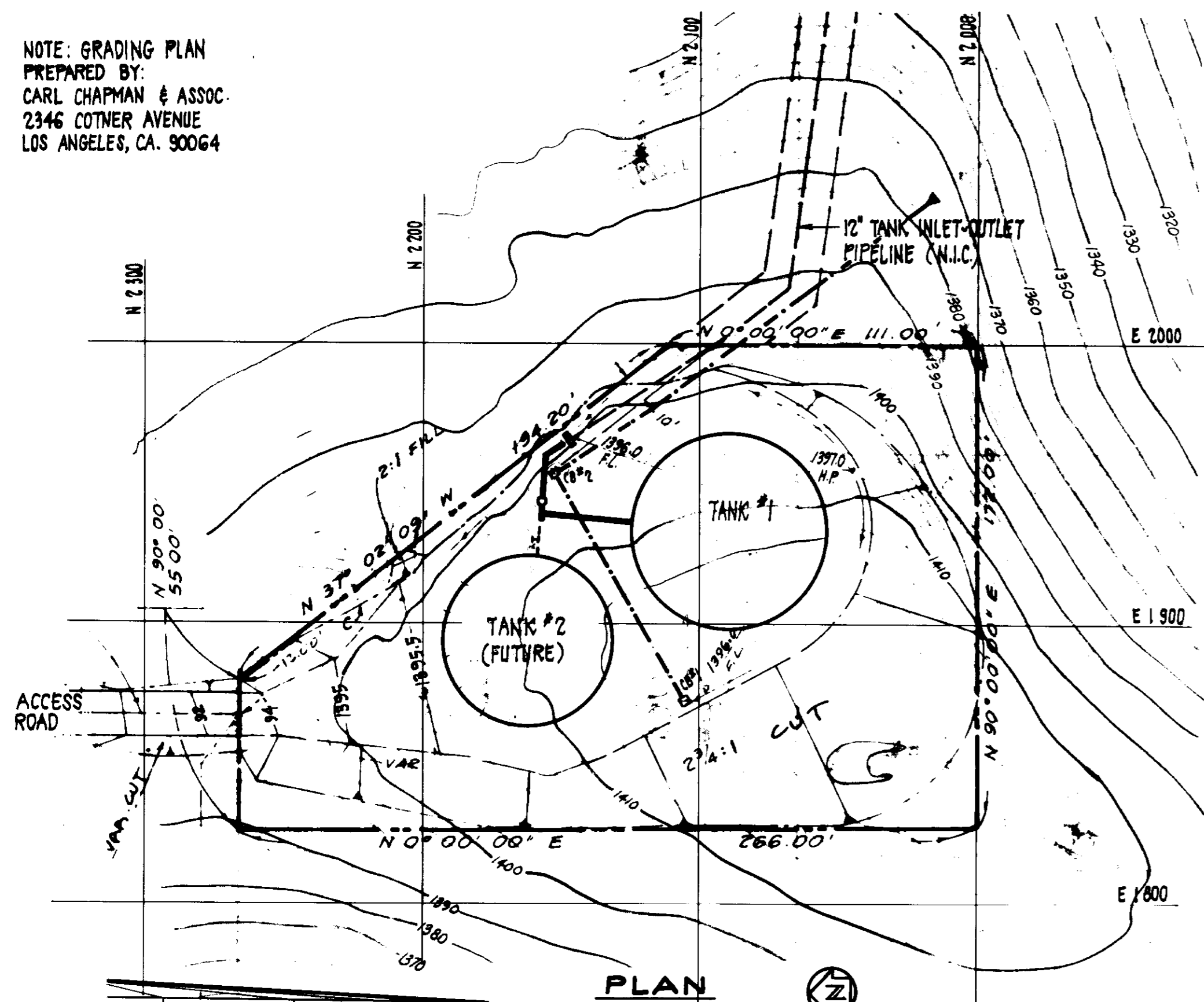
REV.	DATE	DESCRIPTION	APP.
1	2-20-88	CHANGE ORDER NO. 1	FEL
2	2-20-88	ISSUED FOR CONSTRUCTION	FEL

DESIGN: F.E.L.
 CHECKED: JPH
 DRAWN: JPH
 DATE: 2/26/88

SOILS ENGINEERING CORPORATION
 CONSULTING ENGINEERS / ARCHITECTS
 VENTURA, CA

PROJECT NO. 05633
 SHEET NO. 8 OF 17 SHEETS
 17-LAS-153-0100
 DATE: 08-28-1988

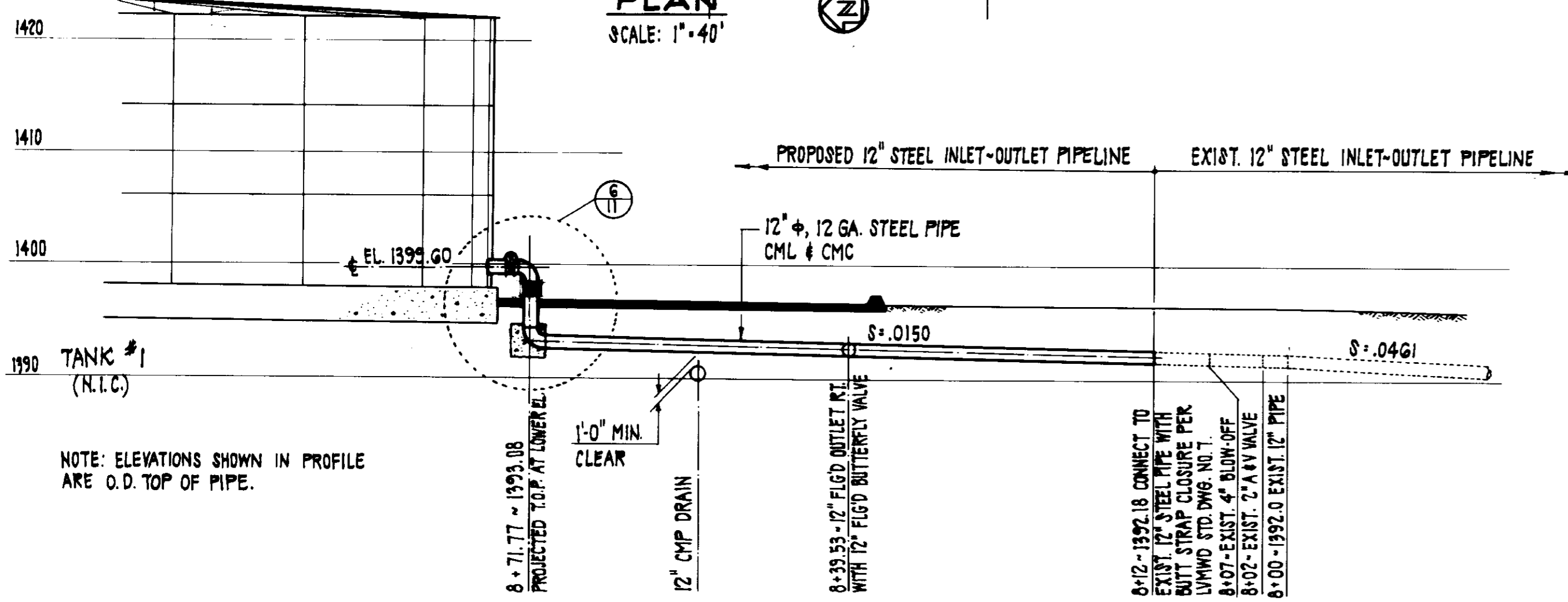
NOTE: GRADING PLAN
PREPARED BY:
CARL CHAPMAN & ASSOC.
2346 COTNER AVENUE
LOS ANGELES, CA. 90064



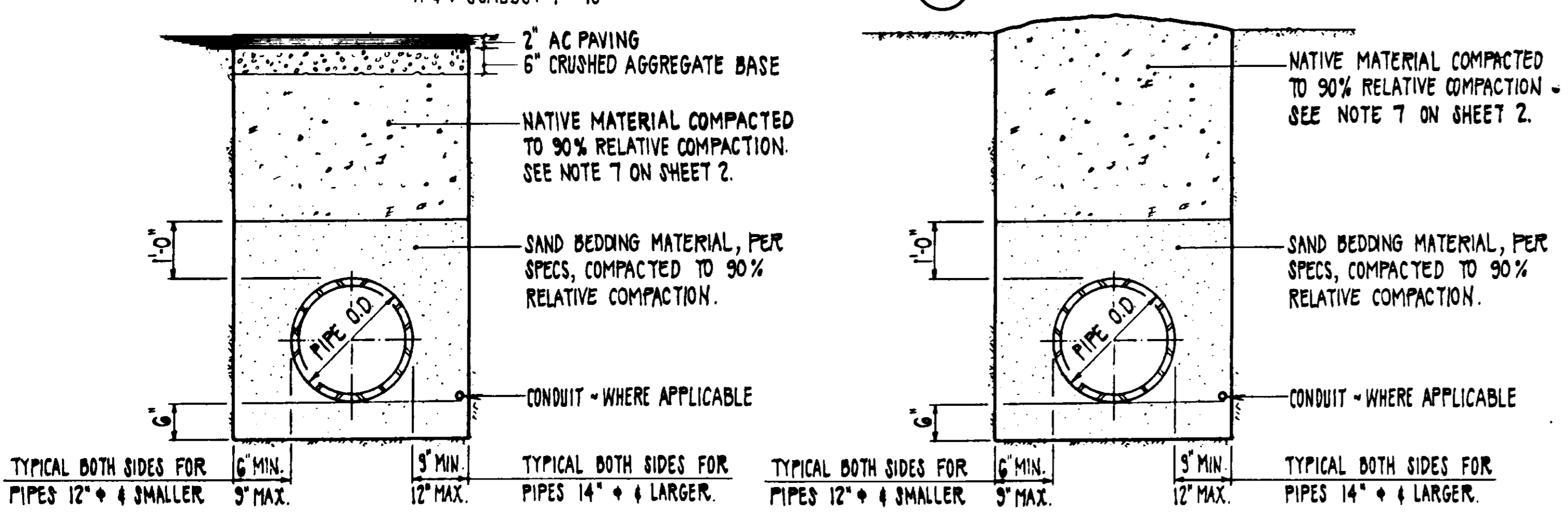
REVISIONS

THIS SET OF DRAWINGS HAS BEEN REVIEWED AND APPROVED FOR THE PROJECT AND THE CONTRACTOR HAS BEEN ADVISED OF THE CHANGES AND THE REVISIONS.

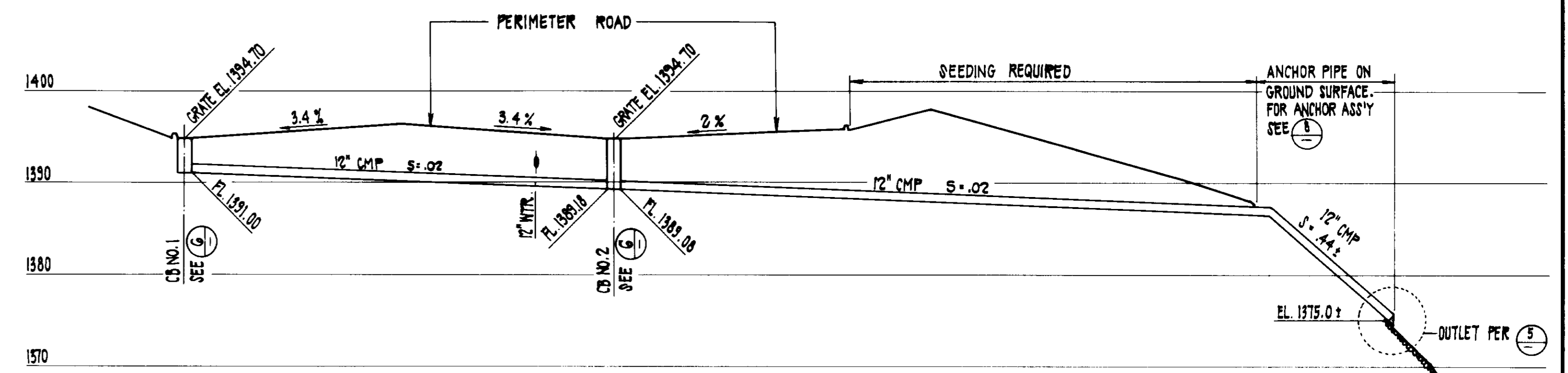
CONSTR. INSPECTION: JAV AGENCY: LIND DATE: 2/26/87
DRAFTED BY: JPH AGENCY: BEL DATE: 12/31/87
PROJ. ENGR.: AV AGENCY: BEL DATE: 12/1/87



INLET-OUTLET PIPELINE PROFILE (1)
H & V SCALES: 1" = 10'



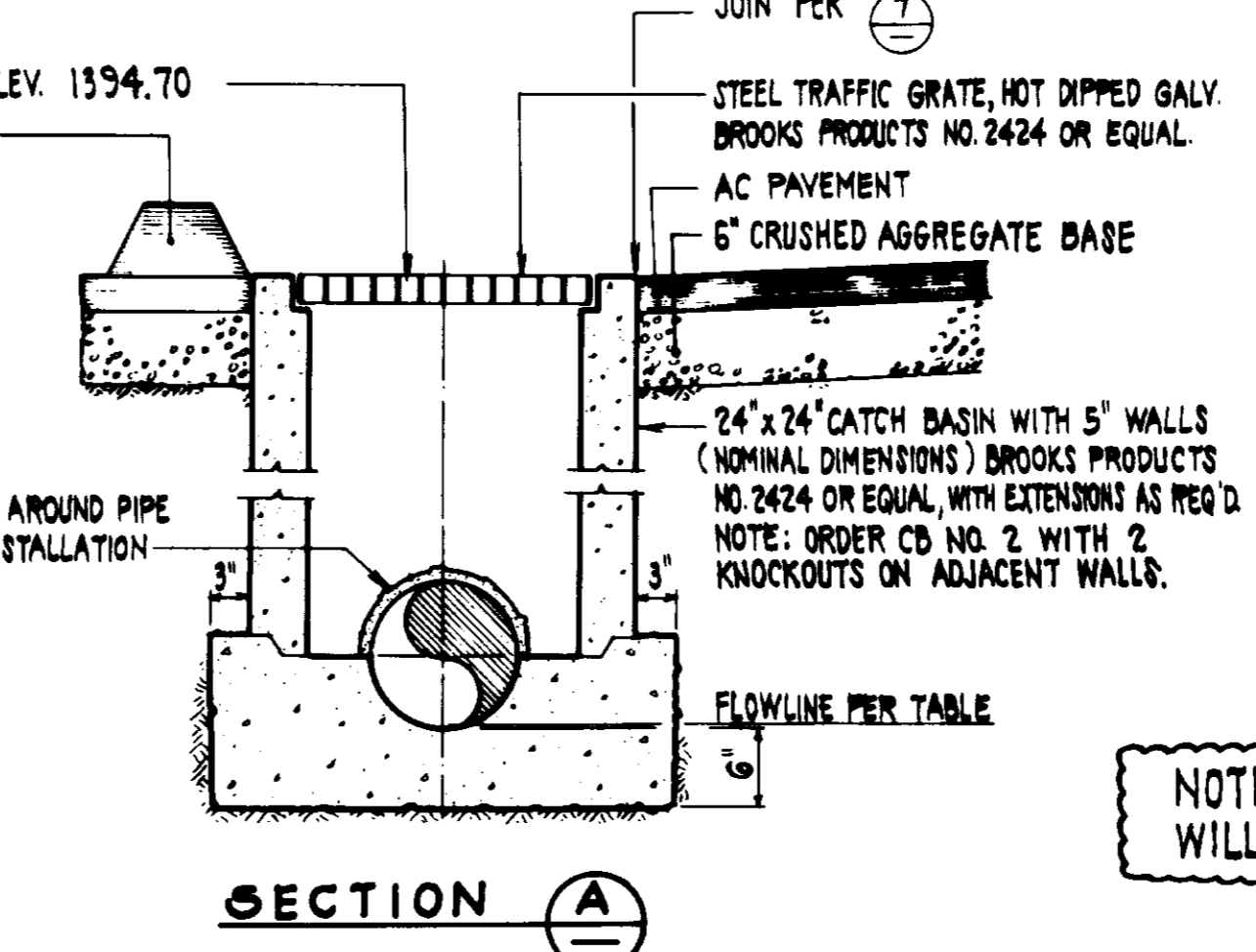
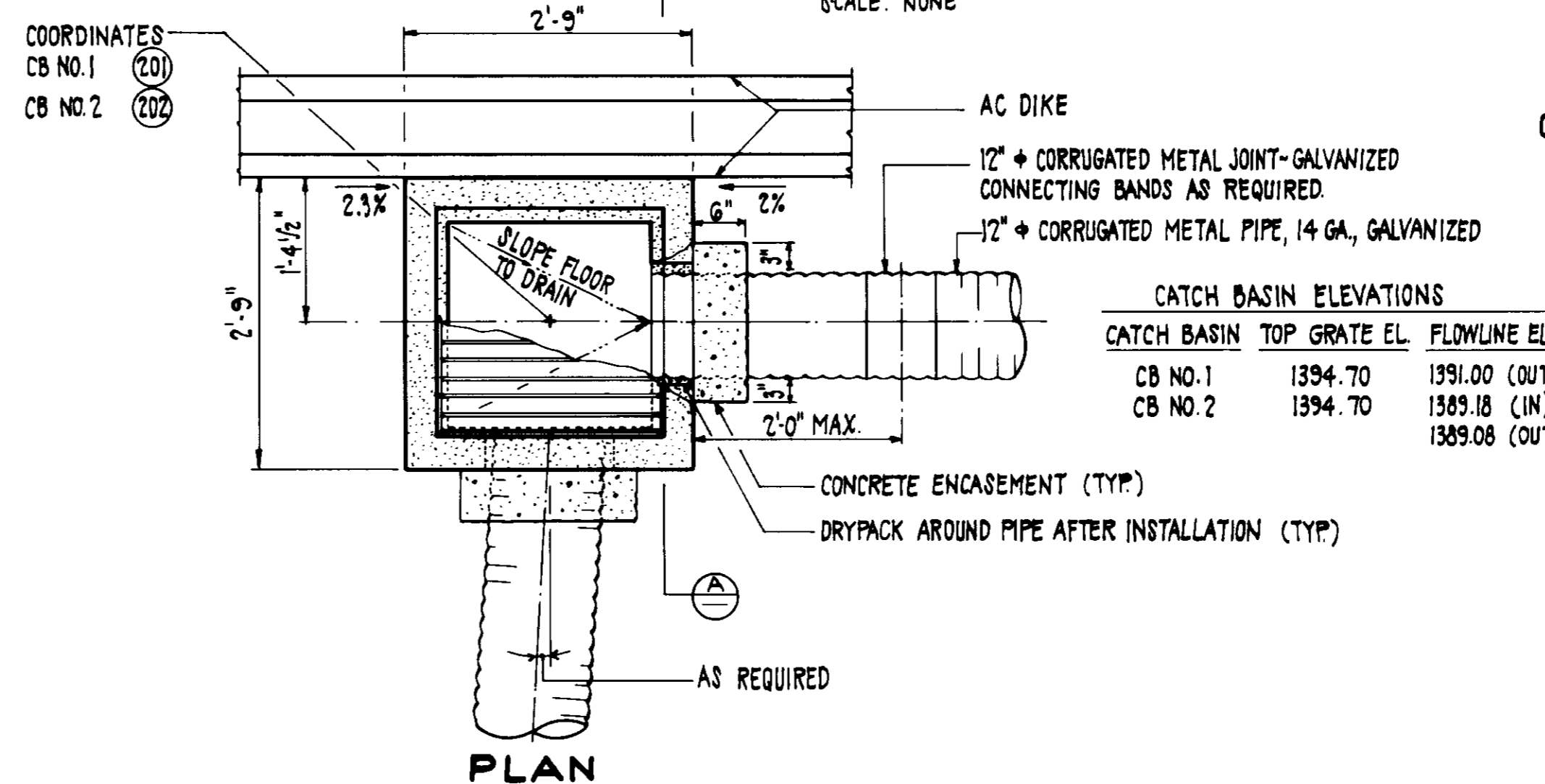
TRENCH BACKFILL IN PAVED AREAS (2) SCALE: NONE
TRENCH BACKFILL IN UNPAVED AREAS (3) SCALE: NONE



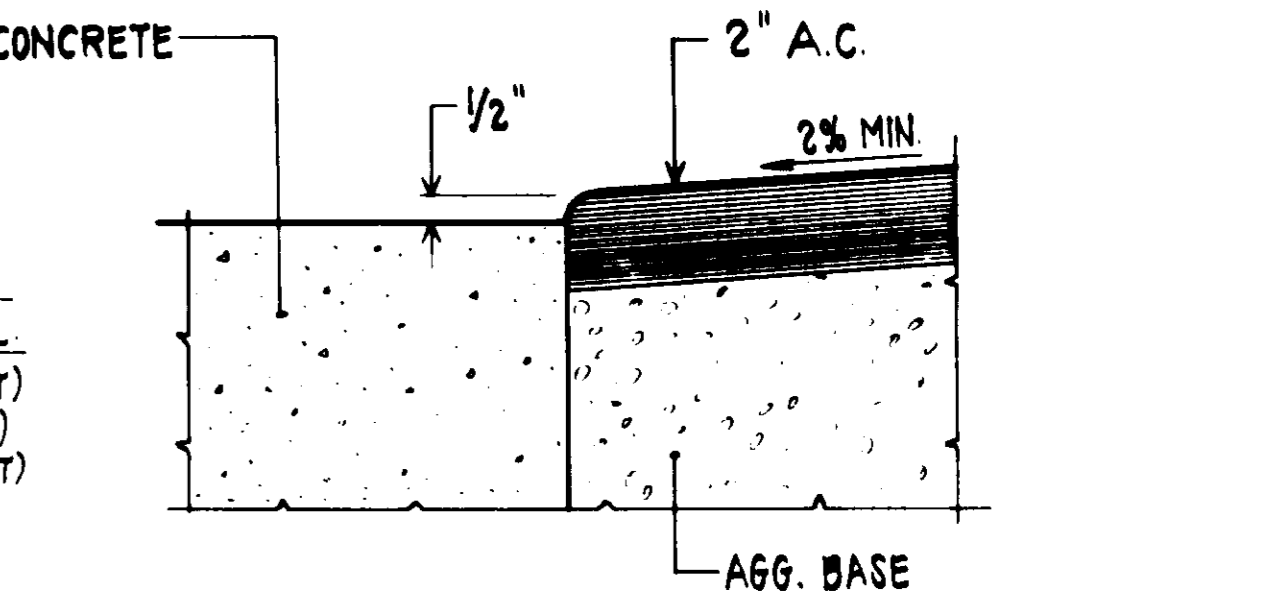
PERIMETER ROAD DRAIN PROFILE (4)
HORIZ. SCALE: 1" = 20'
VERT. SCALE: 1" = 10'



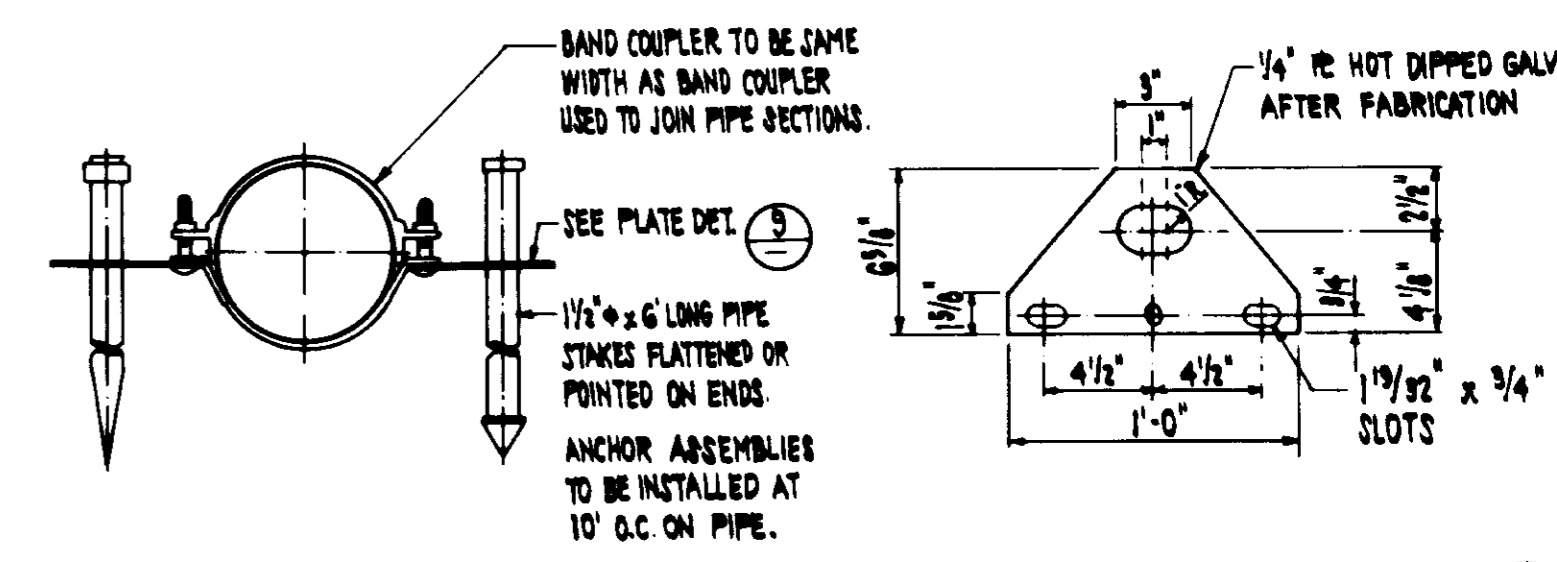
PERIMETER ROAD DRAIN OUTLET DETAILS (5)
SCALE: NONE



CATCH BASIN DETAILS (6)
SCALE: 3/4" = 1'-0"



TYPICAL JOINING OF A.C. PAVEMENT & CONCRETE (7)
SCALE: 1" = 3"



CMP ANCHOR ASSEMBLY DETAIL (8) SCALE: NONE
ANCHOR PLATE DETAIL (9) SCALE: NONE

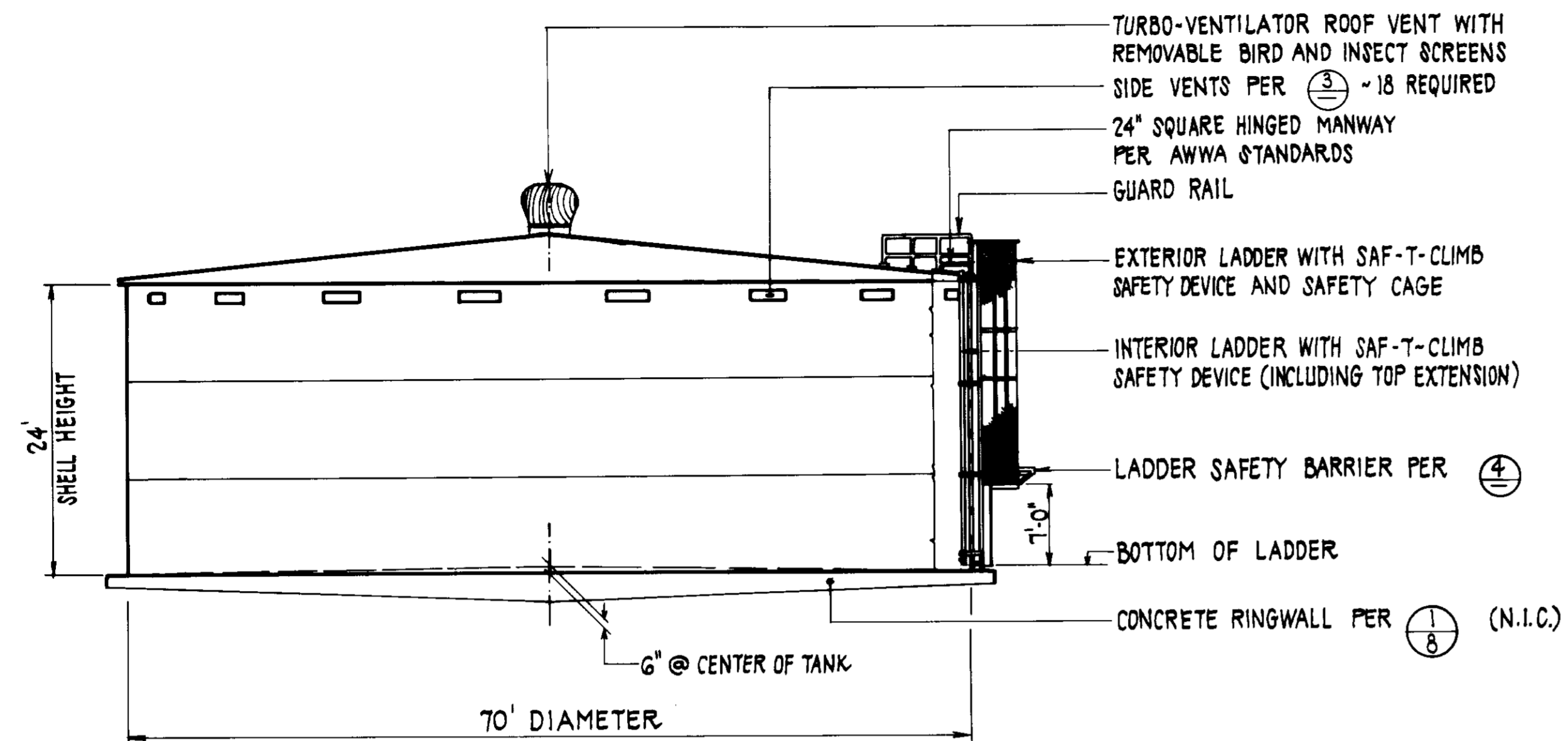
NOTE: JETTING TO ACHIEVE COMPACTION WILL NOT BE PERMITTED AT THE TANK SITE.

LAS VIRGENES MUNICIPAL WATER DISTRICT
JED SMITH PUMP STATION AND TANK
INLET - OUTLET PROFILE AND DRAINAGE DETAILS

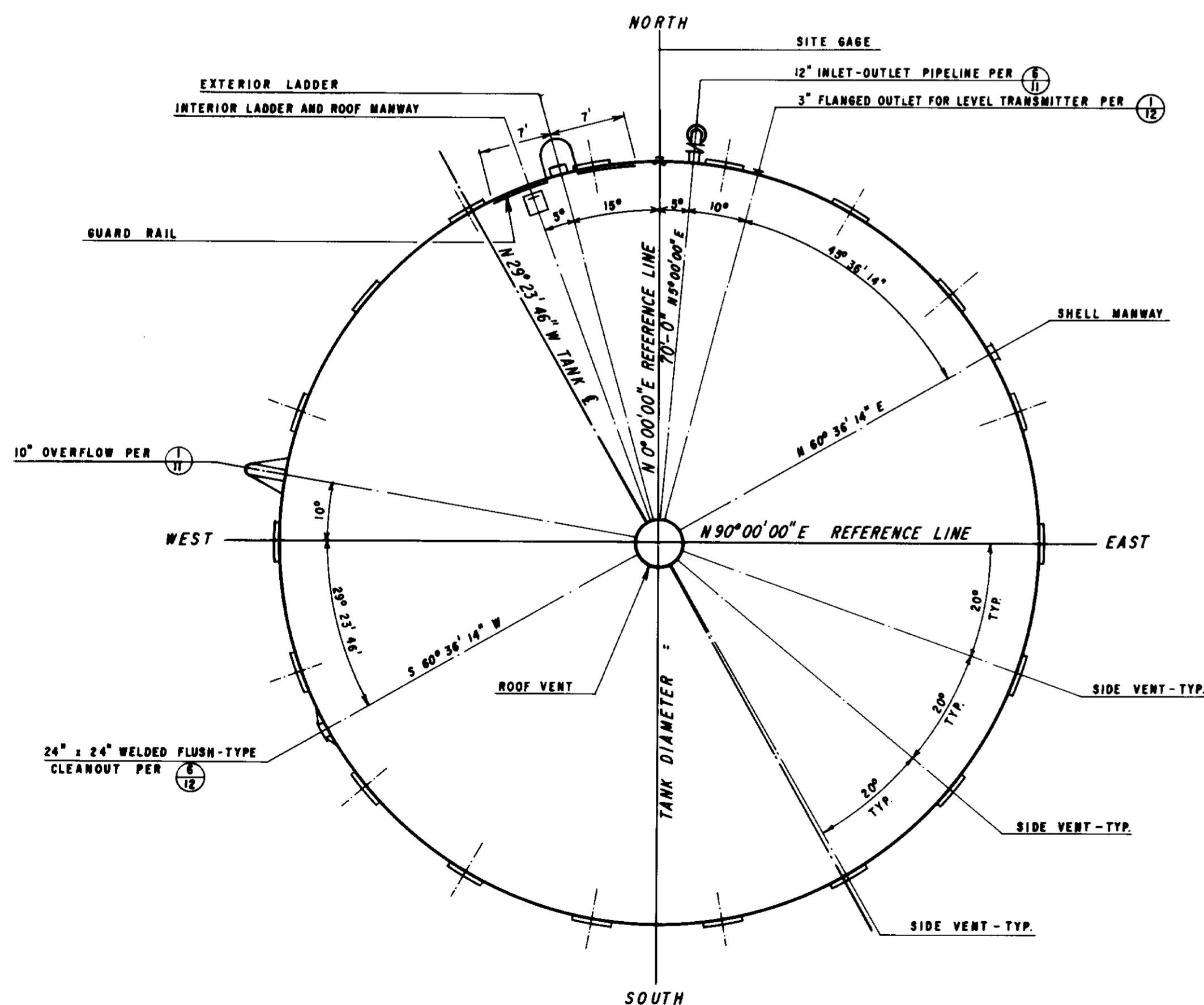
ISSUED FOR CONSTRUCTION	DATE: 1-20-86	DESCRIPTION:	BY: JAV	DATE: 1-20-86	SCALE: NONE
<p>REVISIONS</p> <p>NO. DESCRIPTION</p>			<p>DATE</p>		

Boyle Engineering Corporation
CONSULTING ENGINEERS & ARCHITECTS
VENTURA, CA.

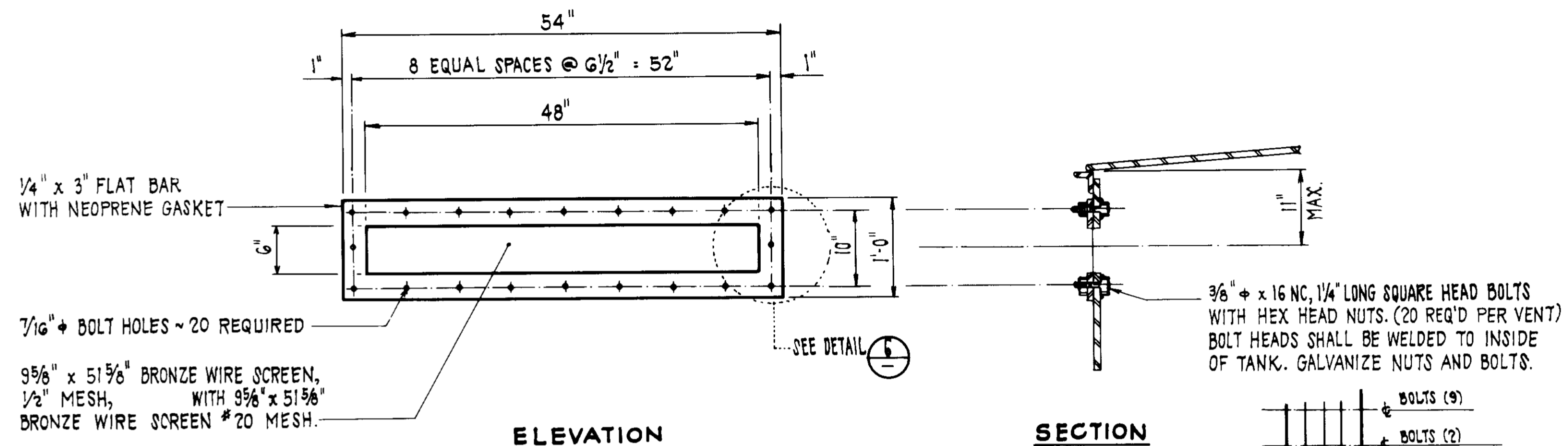
SHEET NO. 9
OF 17 SHEETS
17-LAS-83-01/02
REV. NO. 8-100



TANK ELEVATION ①
SCALE: 1" = 10'



TANK PLAN ②
SCALE: 1" = 10'

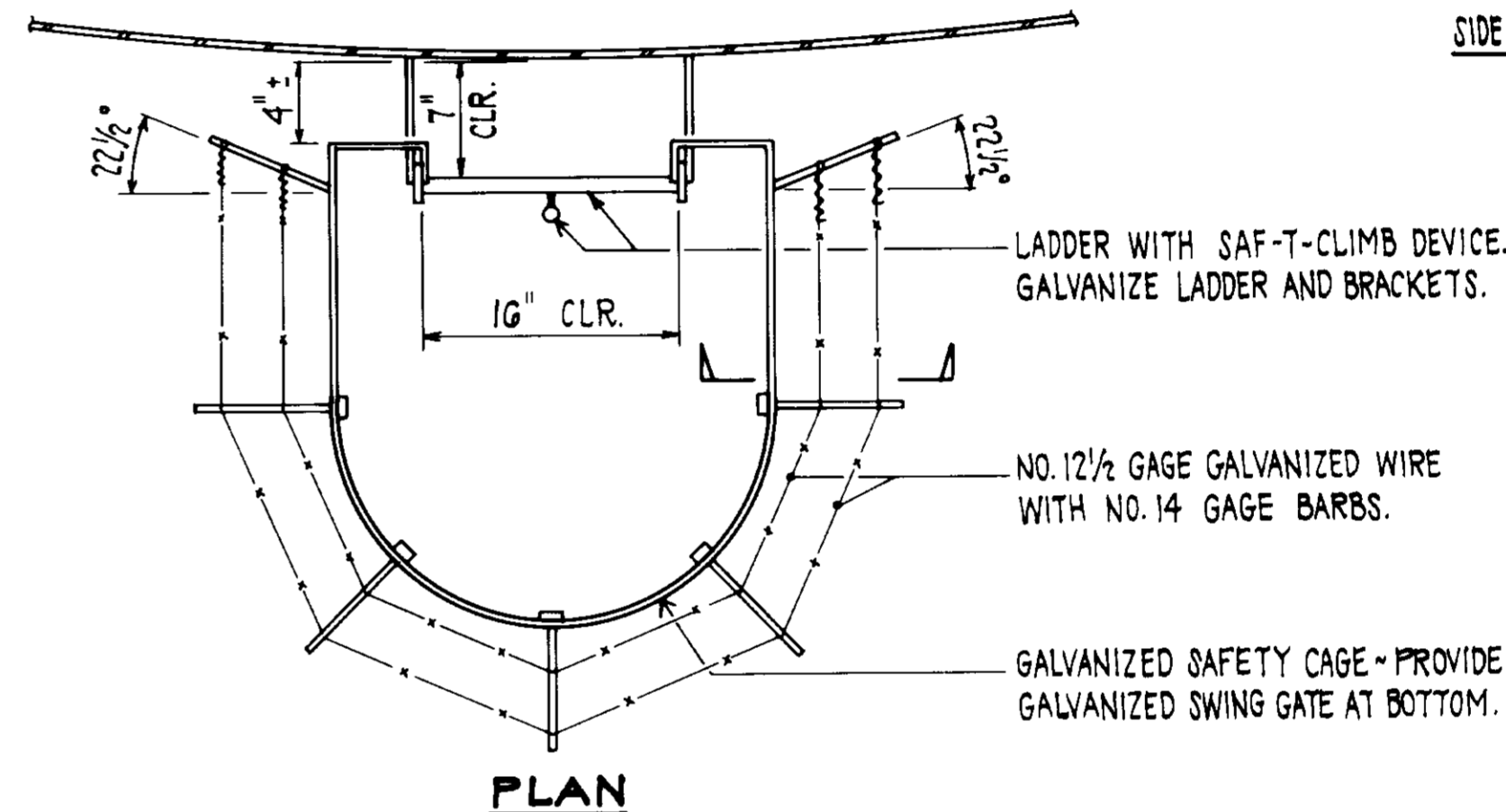


ELEVATION

SECTION

SIDE VENT DETAIL ③
SCALE: 1" = 1'-0"

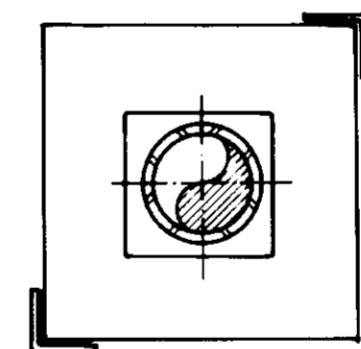
SIDE VENT MATERIALS LAYERING SEQUENCE - SCHEMATIC DETAIL ⑥



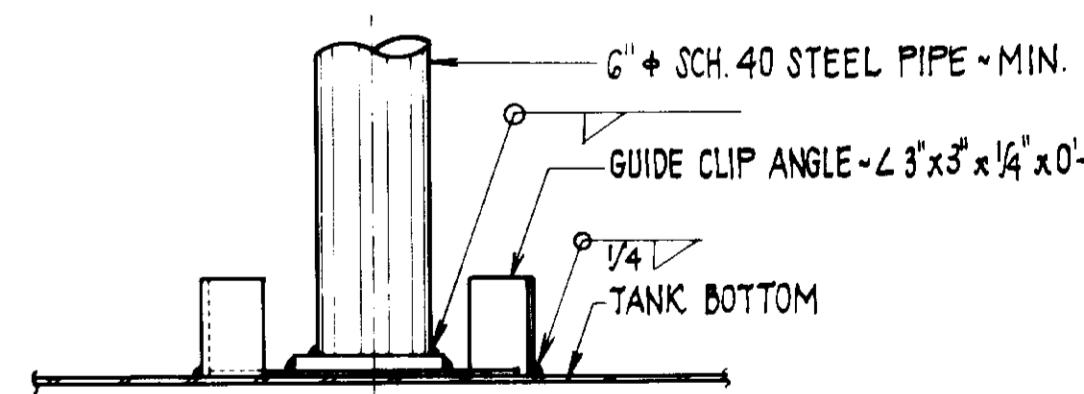
PLAN

SECTION

LADDER SAFETY BARRIER DETAIL ④
SCALE: NONE



PLAN



ELEVATION

COLUMN BASE DETAIL ⑤
SCALE: NONE

- NOTES:**
1. SHIM UNDER COLUMN BASES AT SEAMS IN FLOOR PLATES TO PROVIDE UNIFORM BEARING.
 2. CLEAN & COAT BOTTOM OF COLUMN BASES & TOP OF TANK BOTTOM PLATES PRIOR TO INSTALLING COLUMN ASSEMBLY.
 3. DESIGN BASE PLATES FOR ALLOWABLE SOIL BEARING OF 2000 PSF AND BENDING STRESS OF 27,000 PSI. LOAD TO INCLUDE ROOF DEAD AND LIVE LOADS PLUS COLUMN LOAD.

RECORD DRAWING

THIS RECORD DRAWING IS TO BE USED FOR THE IDENTIFICATION OF THE FACILITIES AND EQUIPMENT IDENTIFIED HEREON. IT HAS BEEN PREPARED UNDER THE SUPERVISION AND CONTROL OF THE ENGINEER AND THE CONTRACTOR.

CONST. INS. SAU. LINDO 2/26/00
 DRAFTED BY: JPH. AGENCY: B.E.C. DATE: 12/18/97
 PROJ. ENGR: R. AGENCY: B.E.C. DATE: 12/18/97

REV	DATE	DESCRIPTION	APP
1-20-06		ISSUED FOR CONSTRUCTION	

LAS VIRGENES MUNICIPAL WATER DISTRICT

JED SMITH PUMP STATION AND TANK

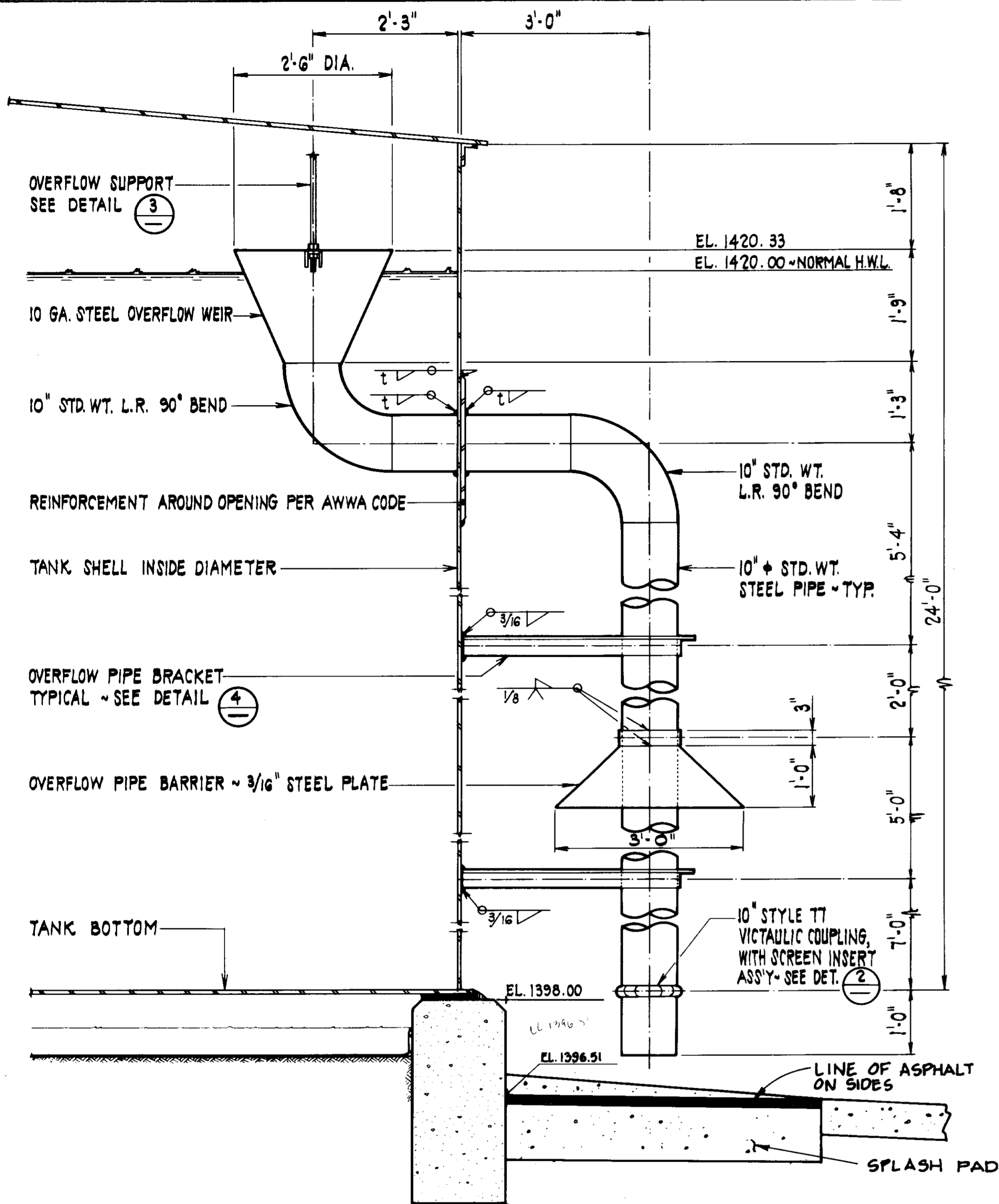
TANK LAYOUT AND DETAILS

DESIGN: FEL
 CHECK: HHR
 DATE: 12/18/97

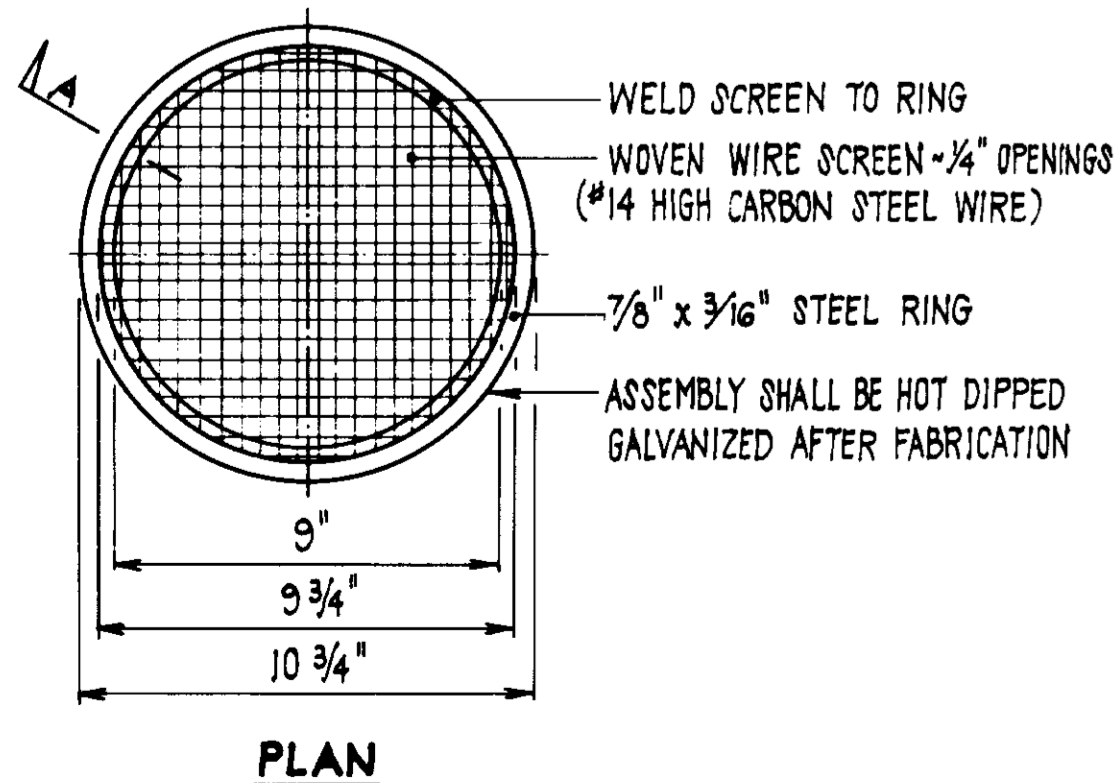
Boule Engineering Corporation
 CONSULTING ENGINEERS / ARCHITECTS
 VENTURA, CA.

SHEET NO. 10 OF 17 SHEETS
 WT-100-483-01/02
 DWG. NO. S-106

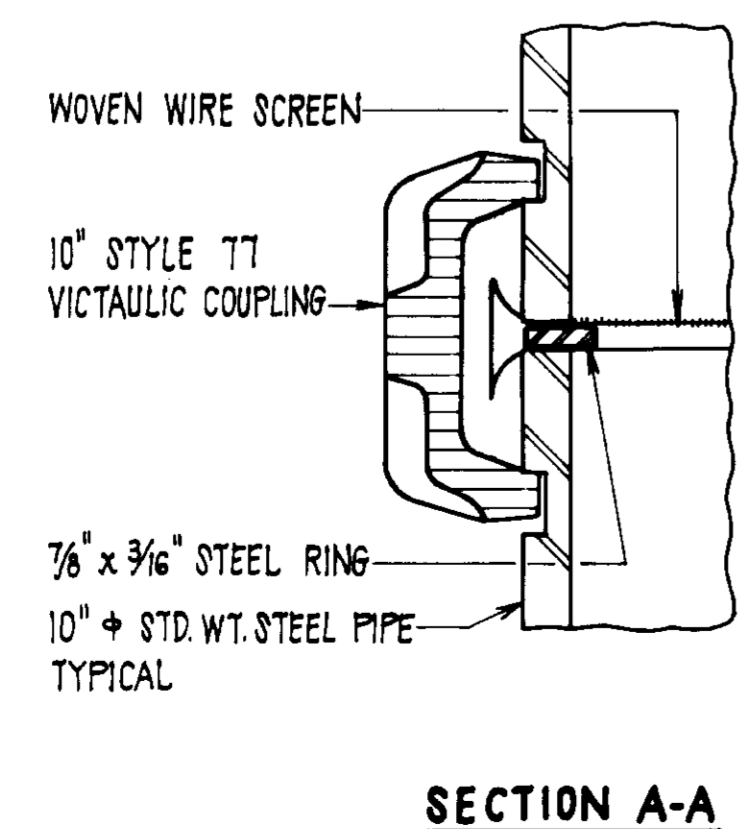
05635



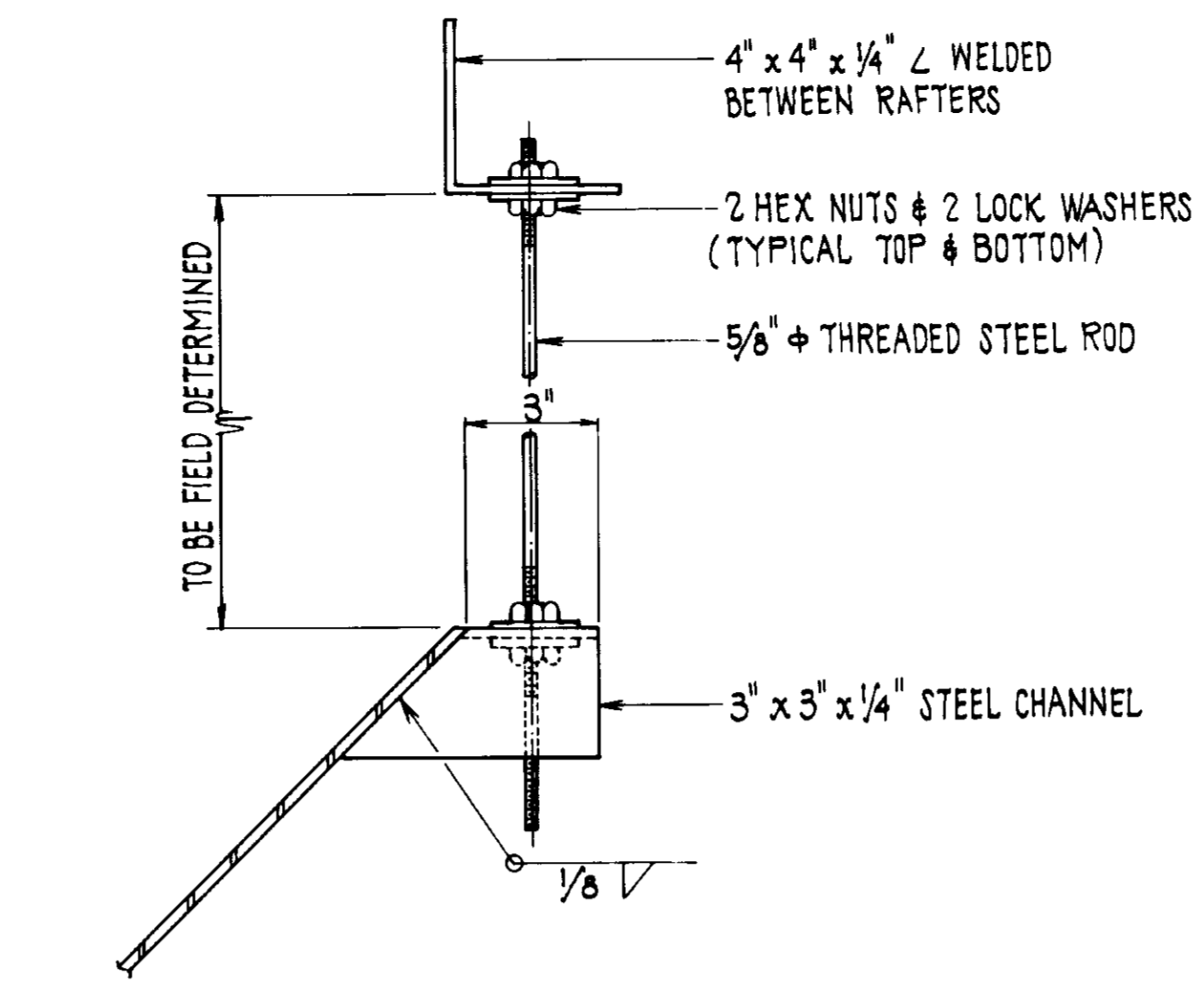
TANK OVERFLOW DETAIL (1)
SCALE: 3/4" = 1'-0"



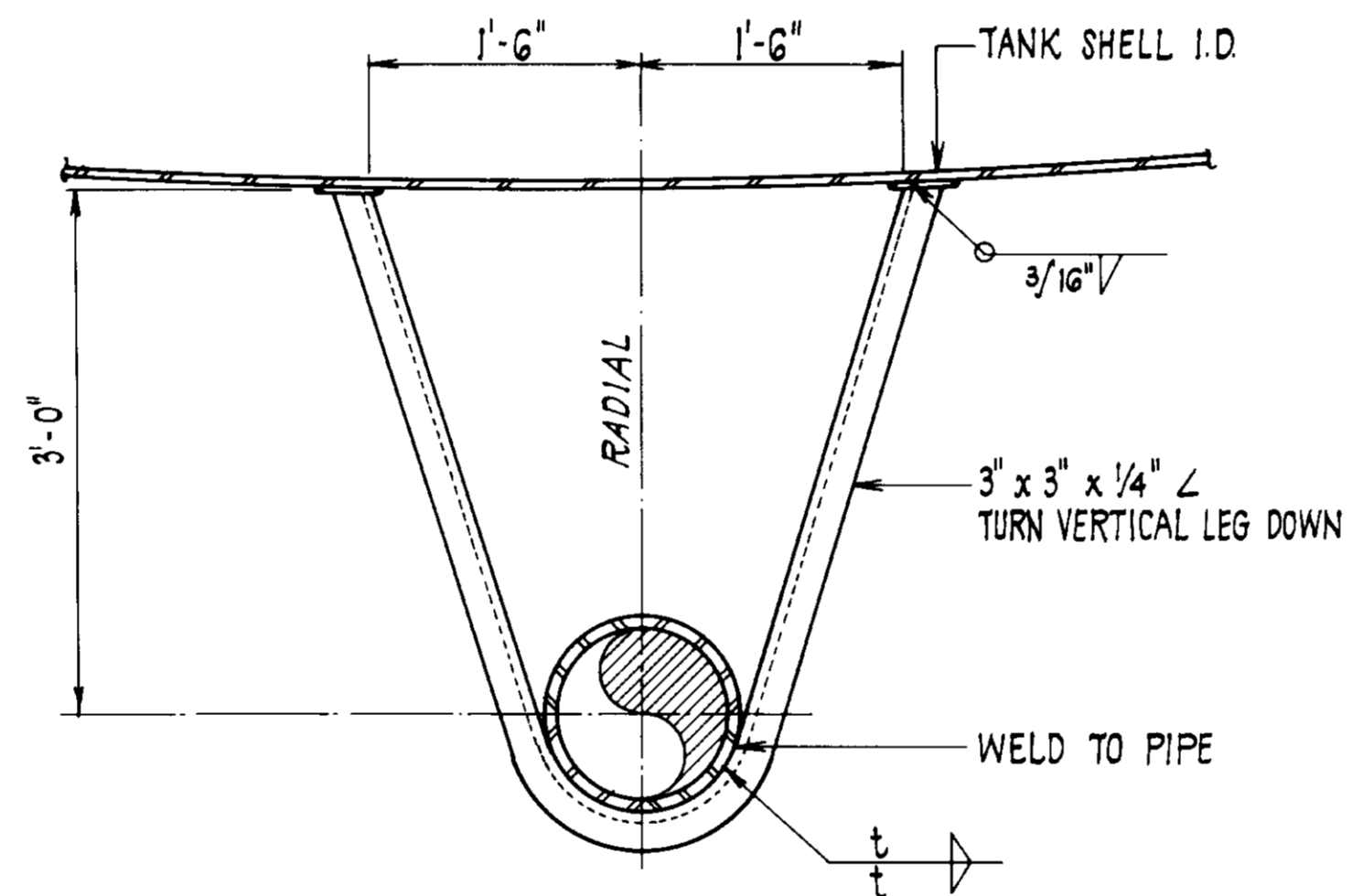
SCREEN INSERT ASSEMBLY DETAIL (2)
SCALE: NONE



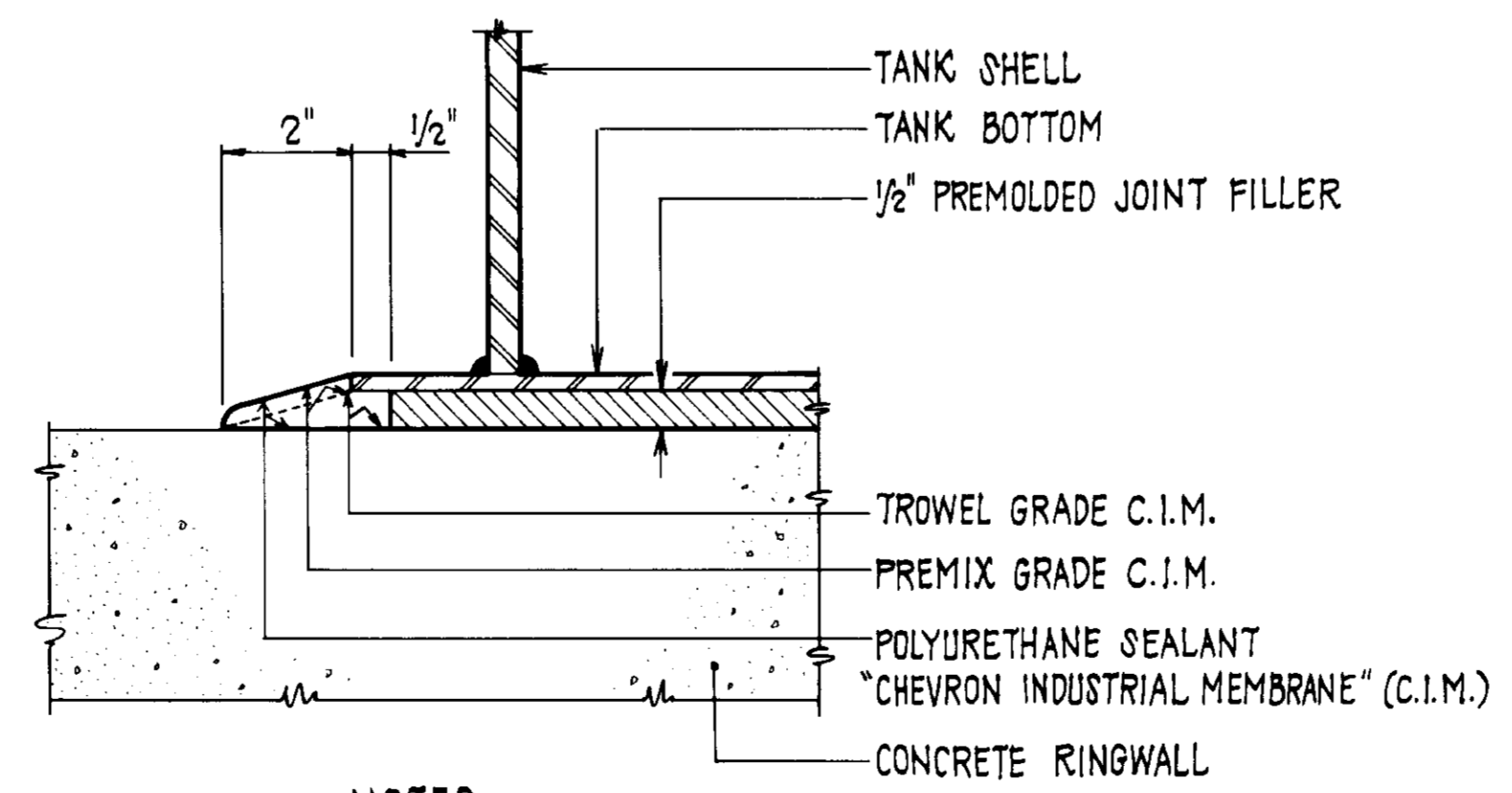
SECTION A-A



OVERFLOW SUPPORT DETAIL (3)
SCALE: NONE

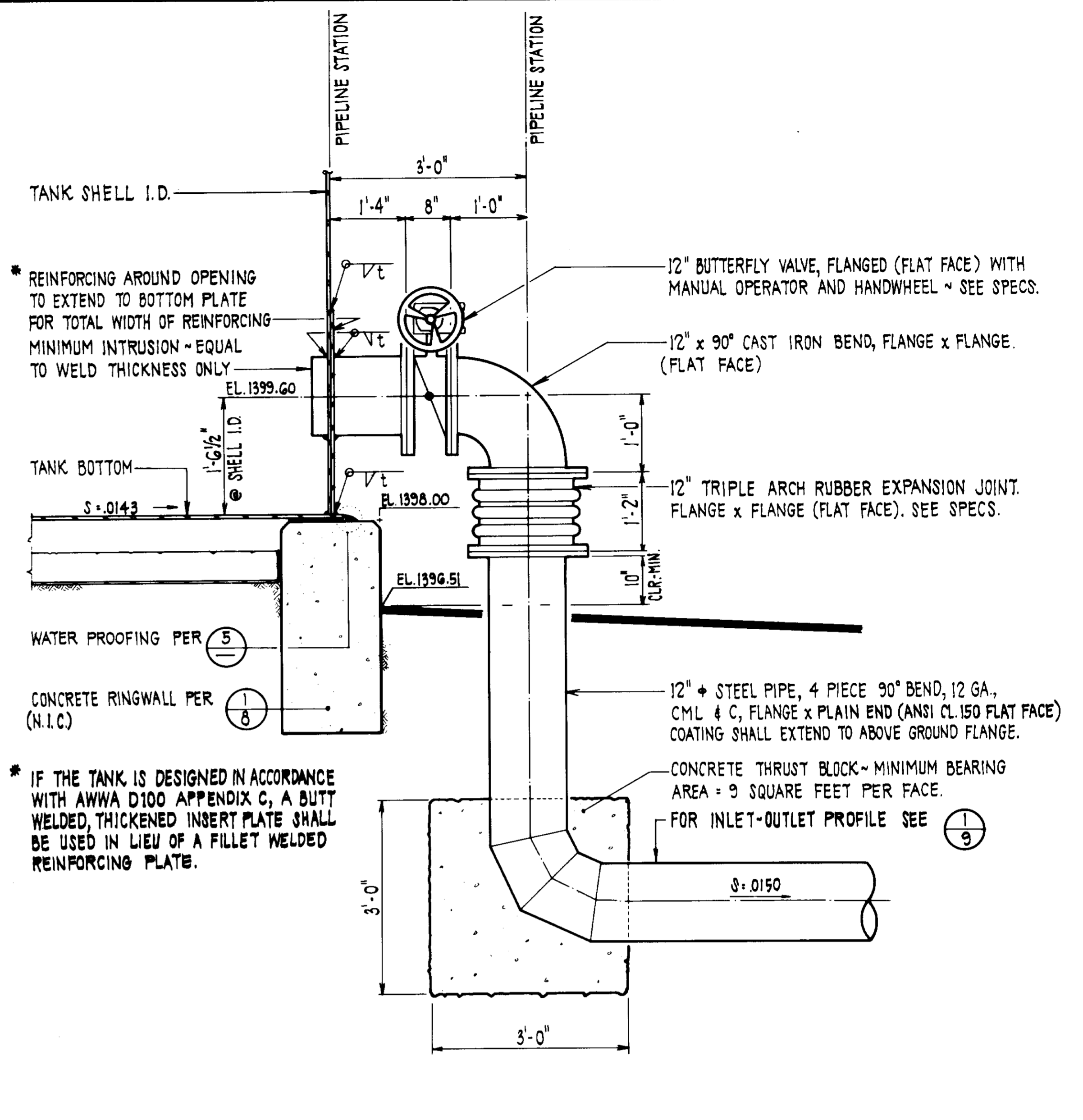


OVERFLOW PIPE BRACKET DETAIL (4)
SCALE: 1" = 1'-0"

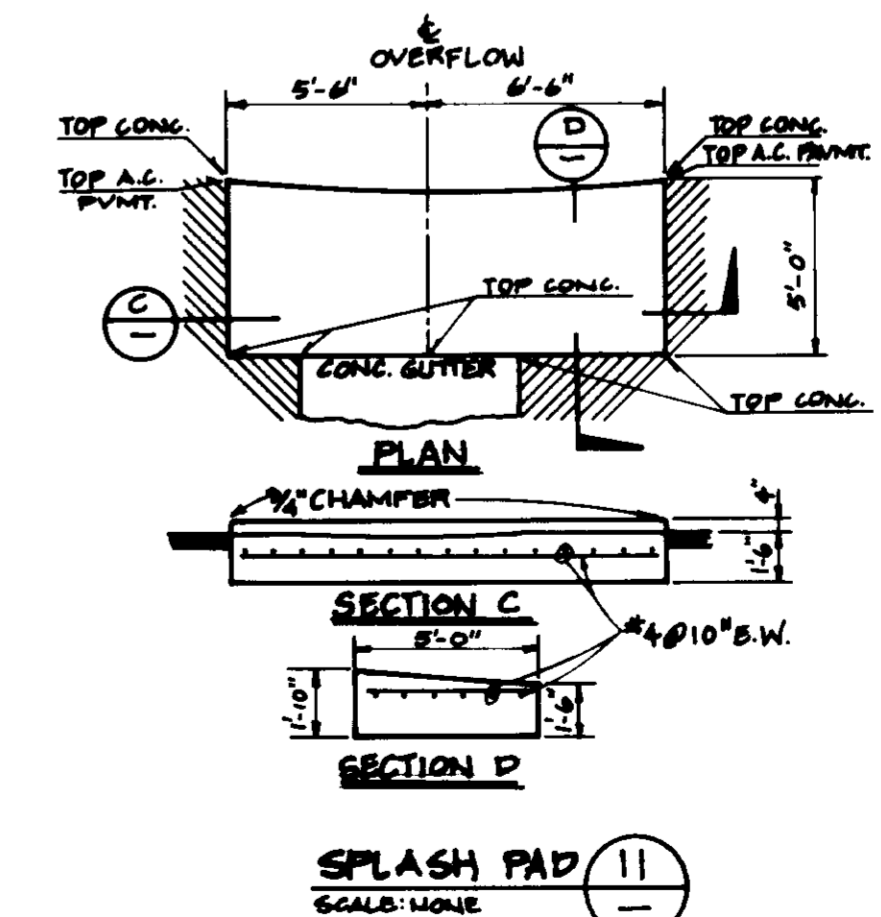


- NOTES**
- C.I.M. SHALL BE PAINTED SAME AS STEEL TANK AFTER PAINTING WITH ACRYLIC.
 - CONCRETE AND STEEL SURFACES SHALL BE SANDBLASTED PRIOR TO PLACING C.I.M.

WATER PROOFING DETAIL (5)
SCALE: NONE



INLET/OUTLET PIPING DETAIL (6)
SCALE: 3/4" = 1'-0"



SPASH PAD (11)
SCALE: NONE

05636

RECORD DRAWING
THIS RECORD DRAWING IS TO BE USED FOR THE FACILITIES IDENTIFIED IN THE TITLE BLOCK. ANY CHANGES TO THIS DRAWING SHALL BE MADE BY THE ORIGINAL DESIGNER OR HIS AUTHORIZED REPRESENTATIVE. ANY OTHER CHANGES SHALL BE IDENTIFIED BY A REVISION NUMBER AND THE DATE OF THE REVISION.

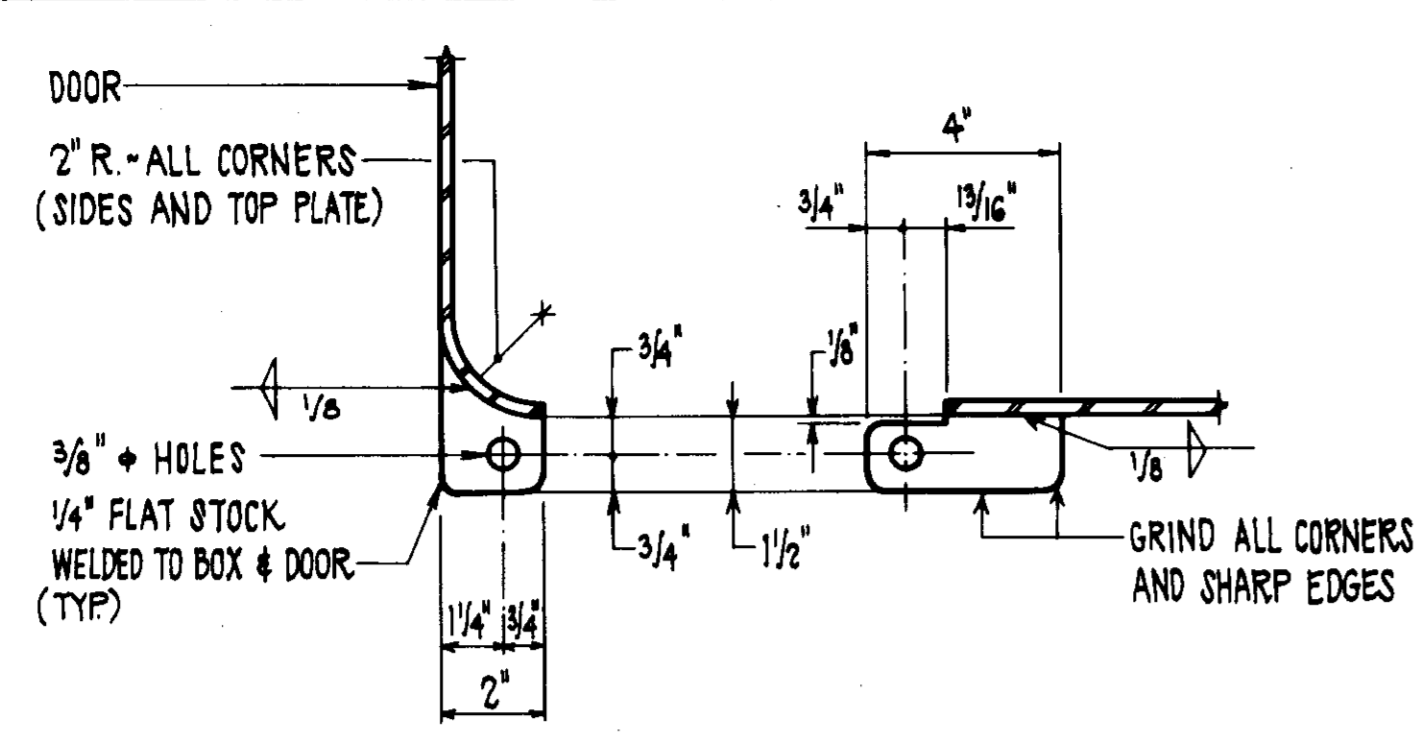
CONSULTED: J.A.V. L.M.A. 2-26-82
DRAFTED BY: J.S.H. B.E.C. 12/18/82
PROJECT: J.V. AGENCY: B.E.C. DATE: 12/18/82

LAS VIRGENES MUNICIPAL WATER DISTRICT
JED SMITH PUMP STATION AND TANK
MISCELLANEOUS TANK DETAILS

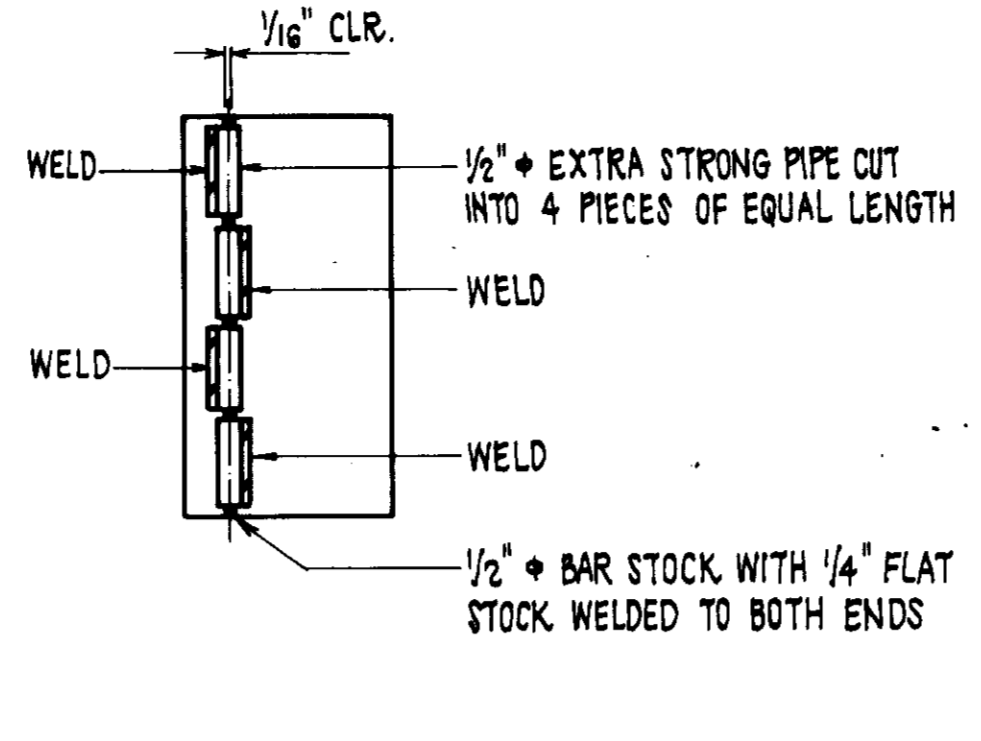
DESIGN: F.E.L.	DATE: 8-20-85	ISSUED FOR CONSTRUCTION	BY: J.E.D.
CHECKED: H.H.R.	DATE: 8-20-85	BY: J.E.D.	
APPROVED: J.E.D.	DATE: 8-20-85	BY: J.E.D.	

LEVEL TRANSMITTER ASSEMBLY

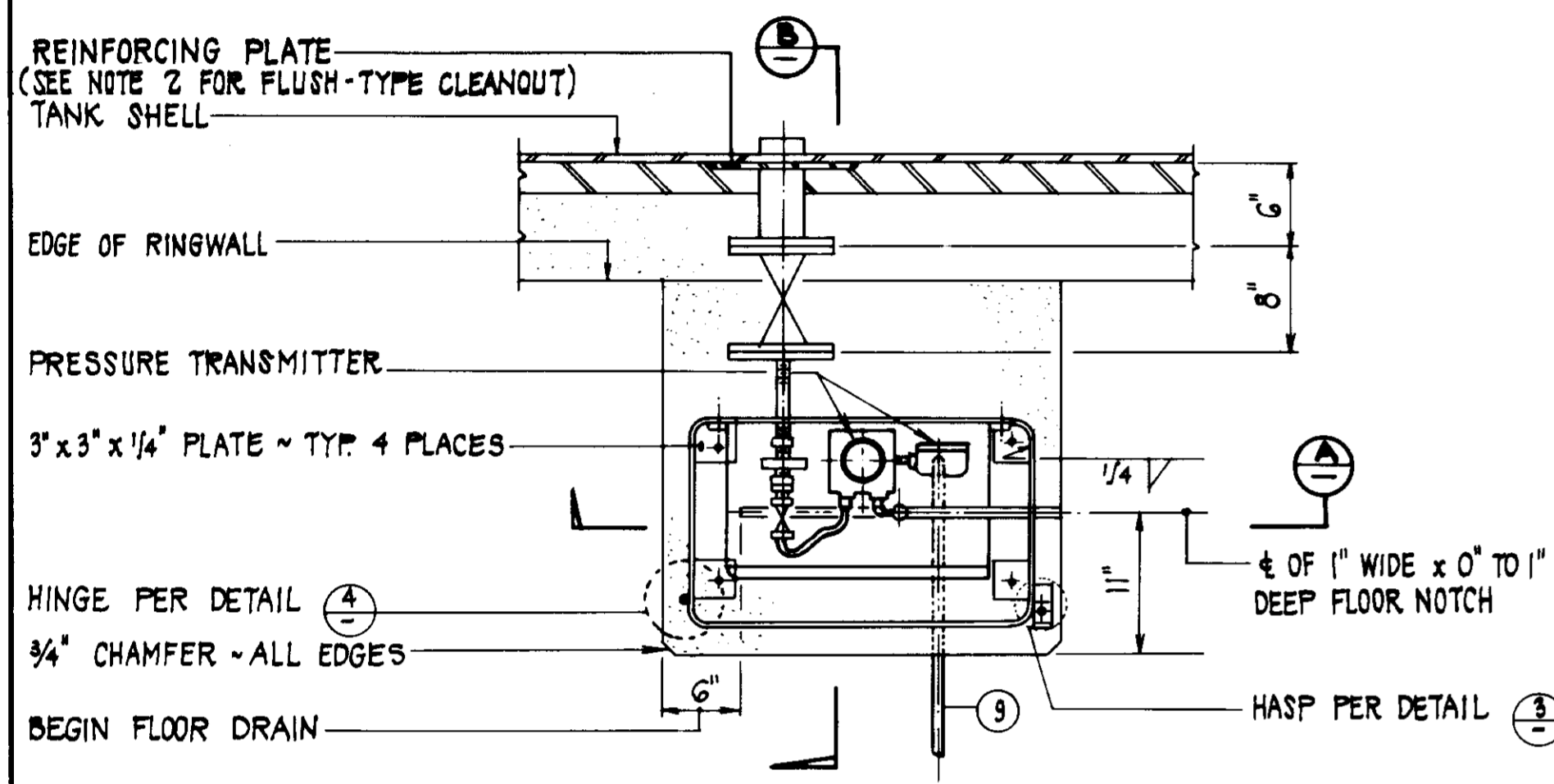
- ① 3" GATE VALVE ~ FLANGE x FLANGE.
- ② 3" STEEL BLIND FLANGE - PROVIDE 1/4" N.P.T. HOLE FOR 1/4" x 1" NYLON INSULATING BUSHING.
- ③ 1" STD. BRASS NIPPLE.
- ④ 1" STD. BRASS TEE.
- ⑤ 1" x 1/2" REDUCING BRASS BUSHING.
- ⑥ 1" x 1/4" REDUCING BRASS BUSHING.
- ⑦ 1/2" NON-RISING STEM BRONZE GATE VALVE, THREADED, WITH 1/2" x BRASS NIPPLE.
- ⑧ 3/2" PRESSURE GAUGE, 0 TO 30 P.S.I.G., MARSH NO. H0242.
- ⑨ 1/4" ELECTRICAL CONDUIT WITH LONG SWEEP.
- ⑩ 1/2" ANCHOR BOLT.



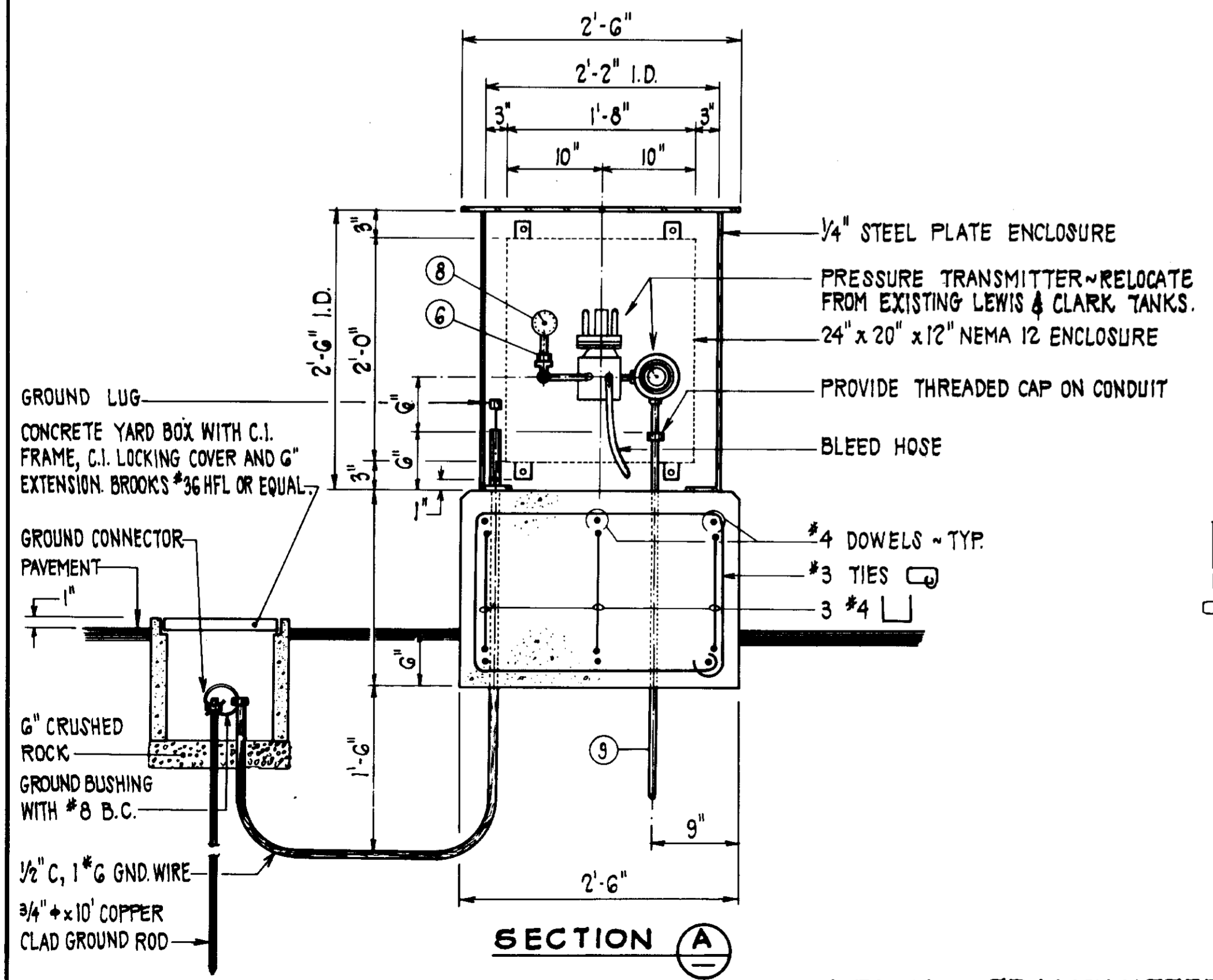
HASP DETAIL ③
SCALE: NONE



HINGE DETAIL ④
SCALE: NONE

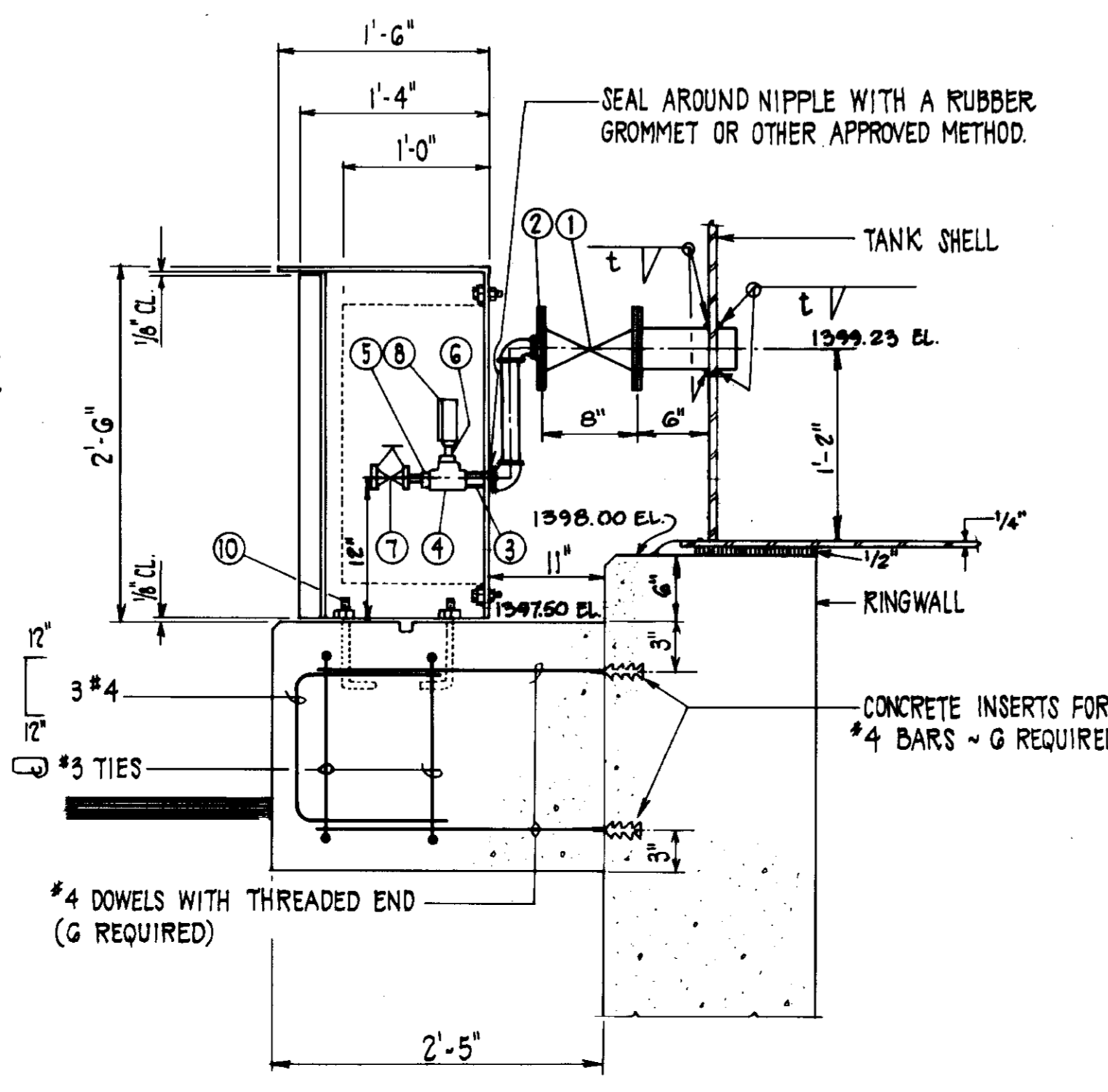


LEVEL TRANSMITTER PLAN ①
SCALE: 1" = 1'-0"

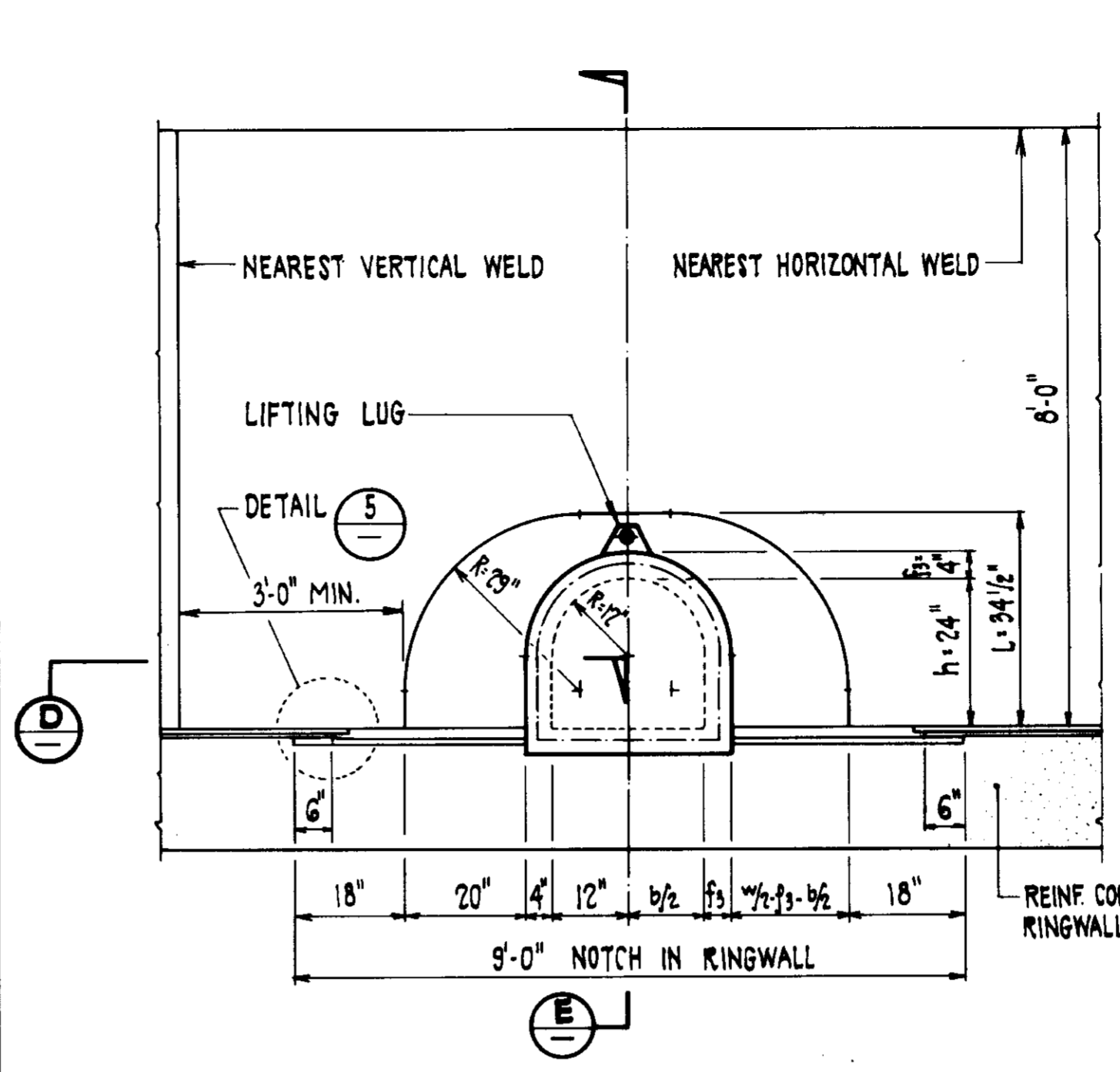


SECTION A

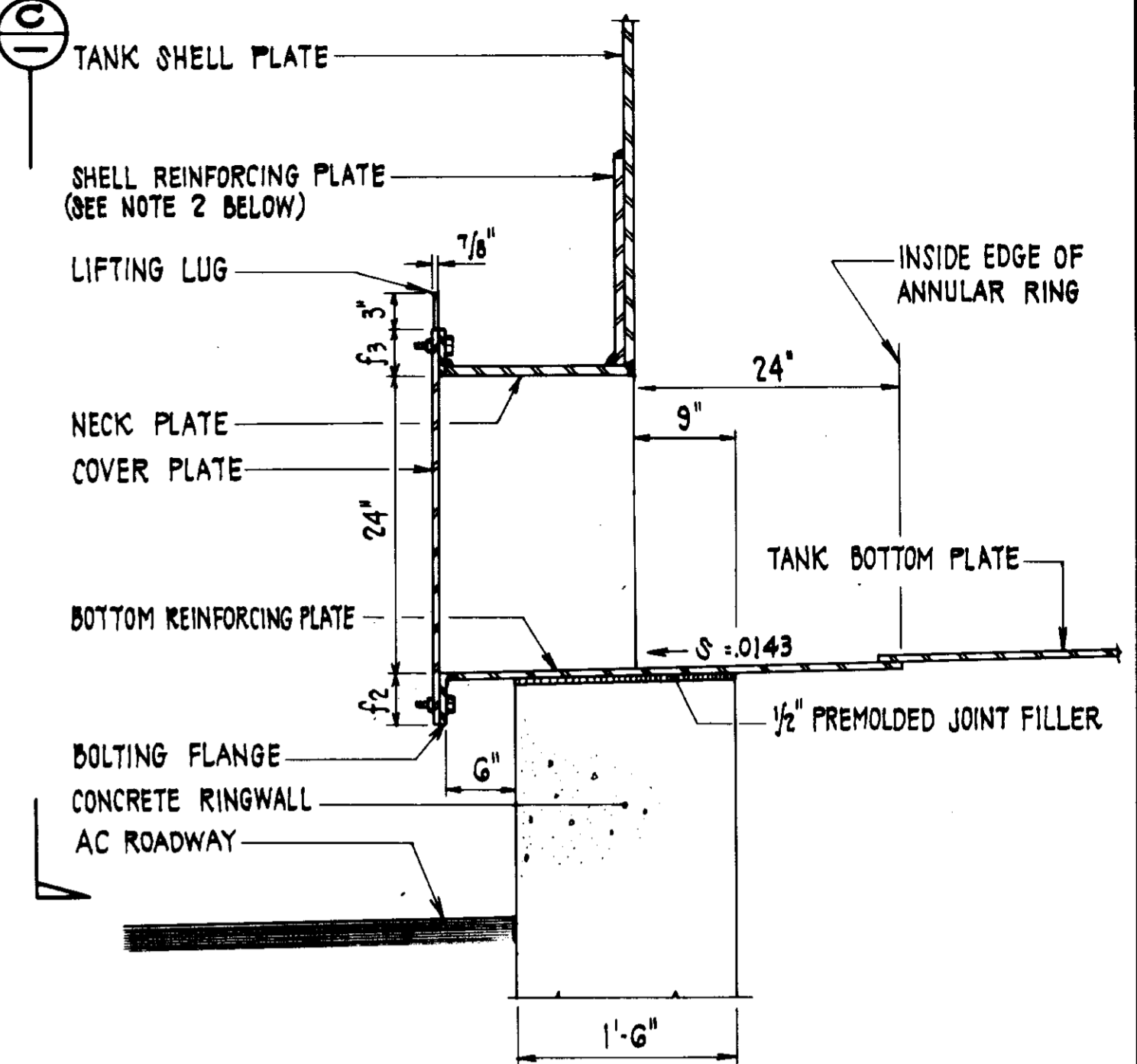
LEVEL TRANSMITTER DETAIL ②
SCALE: 1" = 1'-0"



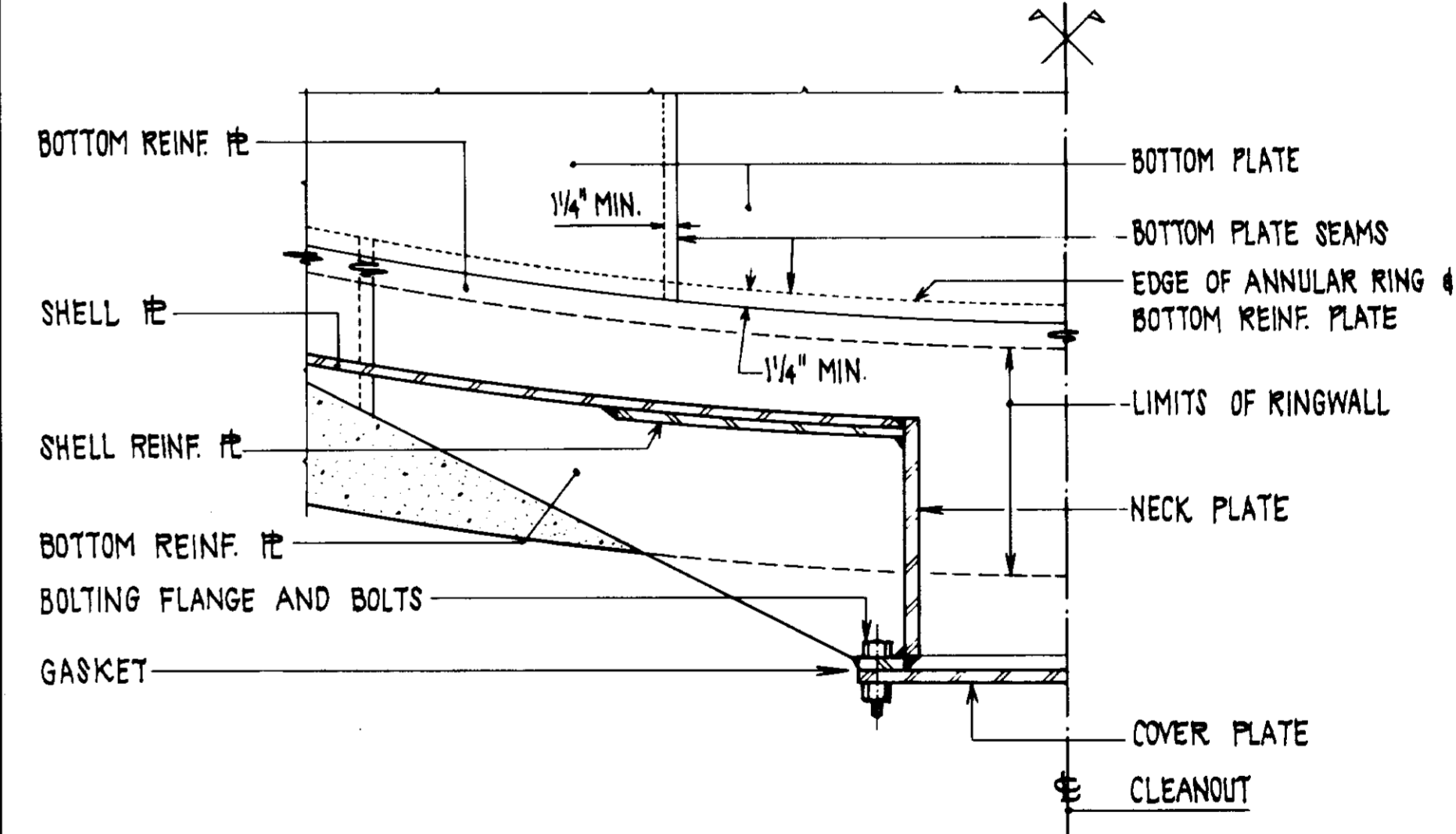
SECTION B



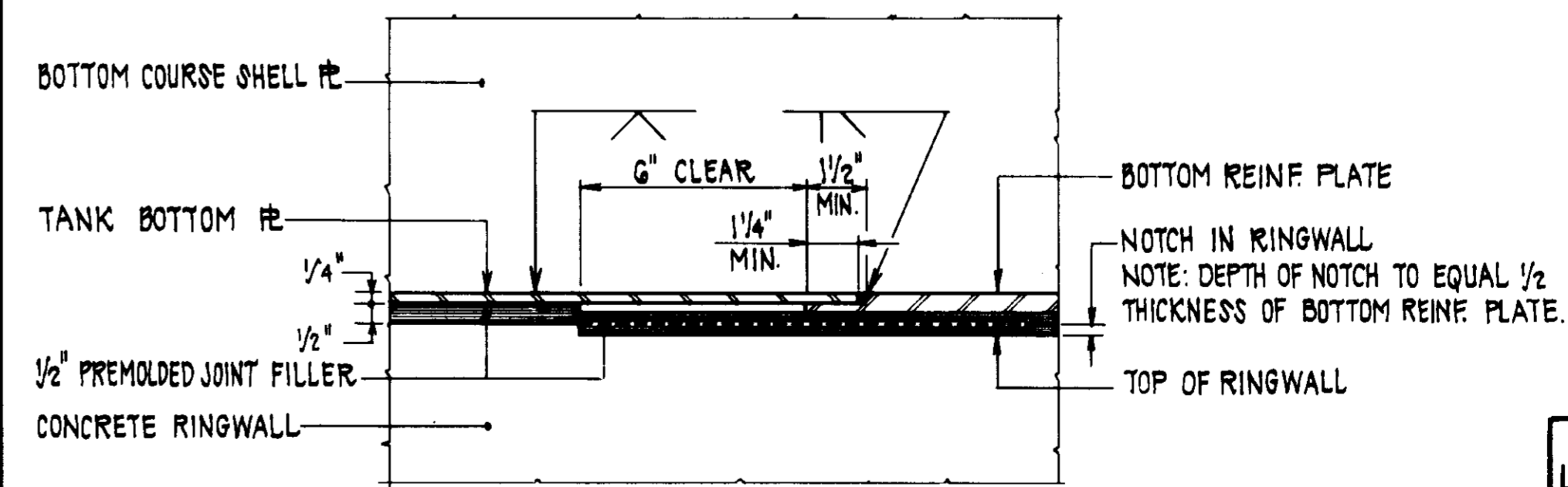
ELEVATION ⑥
SCALE: 1/2" = 1'-0"



SECTION E
SCALE: 1" = 1'-0"



SECTION D
SCALE: 1" = 1'-0"



DETAIL ⑤
SCALE: 3" = 1'-0"

TANK FLUSH-TYPE CLEANOUT DETAILS ⑥
SCALE: AS SHOWN

- NOTES**
- FOR LOCATION OF CLEANOUT SEE TANK PLAN ON SHEET 10. CLEANOUT SHALL BE CONSTRUCTED IN ACCORDANCE WITH A.P.I. STANDARD 650.
 - IF THE TANK IS DESIGNED IN ACCORDANCE WITH ANWA D100 APPENDIX C, A BUTT WELDED THICKENED INSERT PLATE SHALL BE USED IN LIEU OF A FILLET WELDED REINFORCING PLATE.

RECORD DRAWING

THIS RECORD DRAWING APPLIES ONLY TO THOSE FACILITIES CONSTRUCTED UNDER THE CONTRACT IDENTIFIED IN THE TITLE BLOCK. THIS DRAWING HAS BEEN PREPARED ON THE BASIS OF THE INFORMATION FURNISHED BY THE CONTRACTOR AND THE CONSTRUCTION INSPECTOR.

CONST. INSP. SAU. DATE 12/26/88
 LUPA/ELC. JPH. AGENCY: BEC. DATE 12/18/87
 PROJ. ENGR. RVL. AGENCY: BEC. DATE 12/18/87

05637

LAS VIRGENES MUNICIPAL WATER DISTRICT
 JED SMITH PUMP STATION AND TANK
 LEVEL TRANSMITTER AND TANK CLEANOUT DETAILS

DESIGN: F.E.L.	DATE: 12/26/88	BY: J.E.L.	SCALE: 1" = 1'-0"
DRAWN: H.V.R.	DATE: 12/18/87	BY: J.E.L.	SCALE: 1" = 1'-0"
CHECKED: J.E.L.	DATE: 12/18/87	BY: J.E.L.	SCALE: 1" = 1'-0"
APPROVED: J.E.L.	DATE: 12/18/87	BY: J.E.L.	SCALE: 1" = 1'-0"