

Water Resources Implementation Strategy (WRIST)

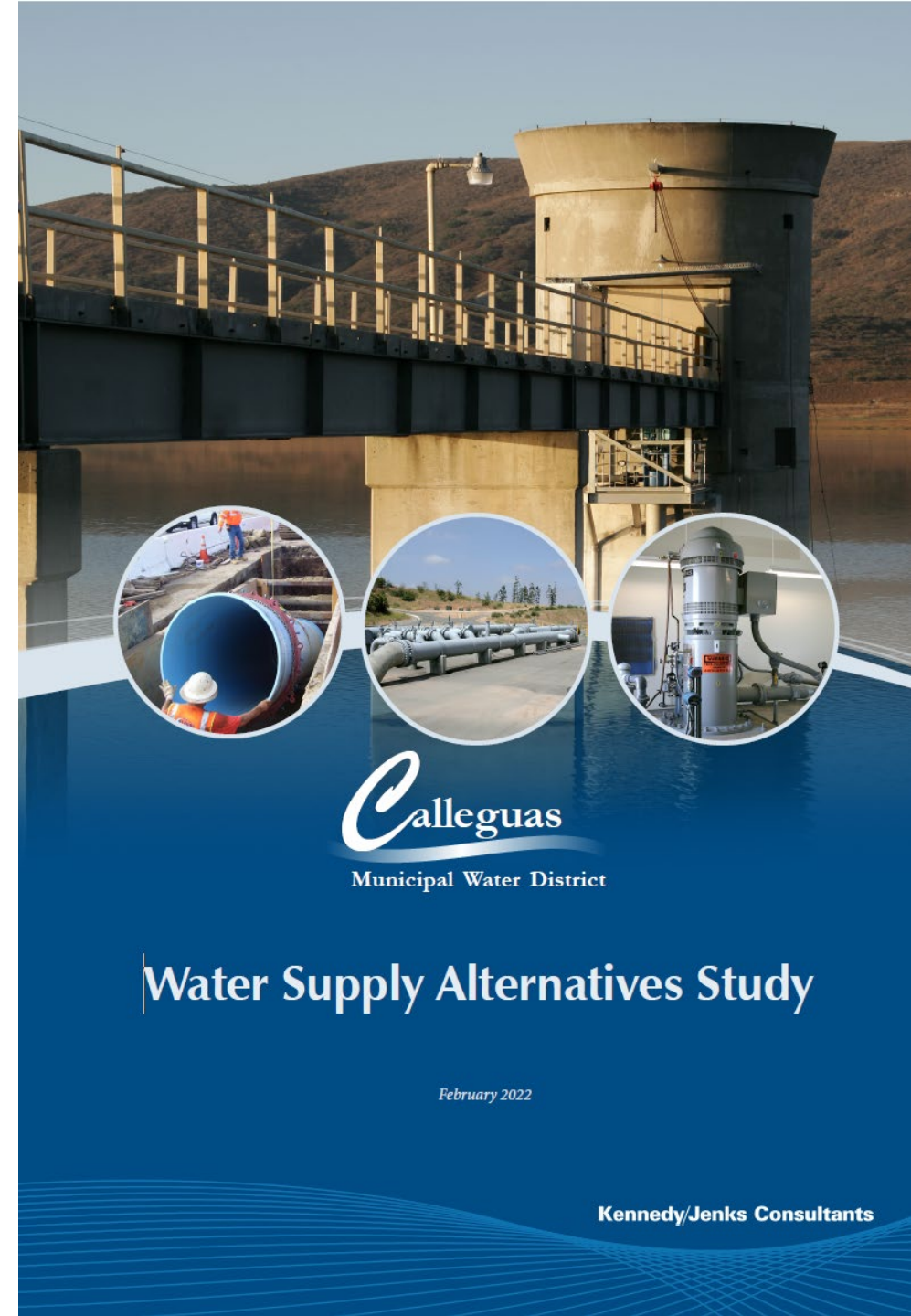
Calleguas MWD-LVMWD
Joint Board Meeting

July 12, 2023



Water Supply Alternatives Study

- Multi-year effort completed in 2022, including comprehensive outreach with retail partners and other potential project partners.
- Originally focused on identifying supplies to meet demands during a 6-month imported water outage.
- Evaluated over 100 potential projects.
- Ultimately, 16 “leading contender” projects were identified for subsequent consideration.



Calleguas
Municipal Water District

Water Supply Alternatives Study

February 2022

Kennedy/Jenks Consultants

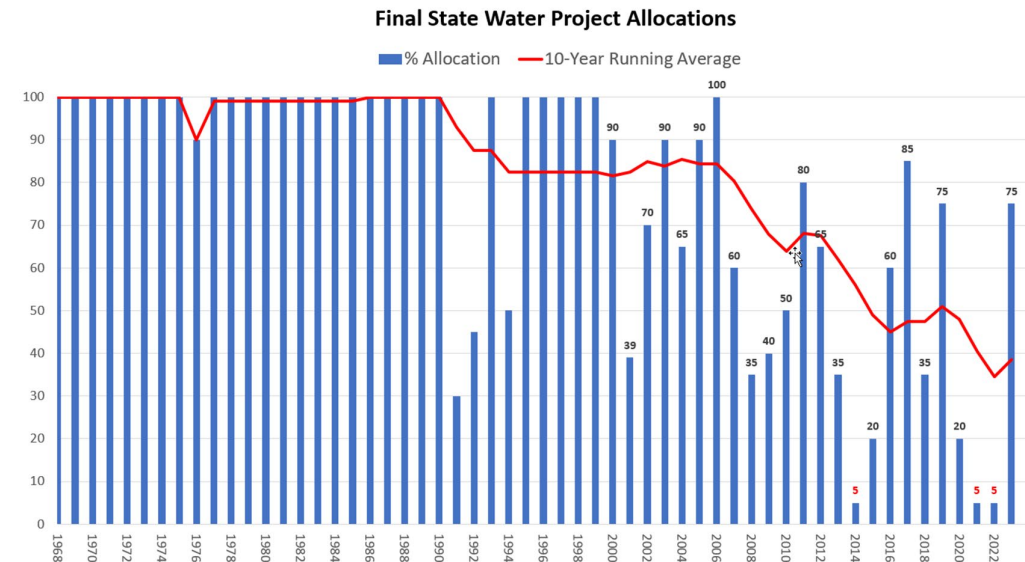
Shifting Water Supply Context

- During preparation of the WSAS, historically low SWP allocations and conveyance limitations in MWD's system resulted in unprecedented constrained imported water deliveries to SWP Dependent Areas like Calleguas and LVMWD.
- MWD's Integrated Resources Planning (IRP) process identified the potential for extended imported water shortages from both its SWP and Colorado River sources, highlighting the region's imported water supply vulnerability to climate change.



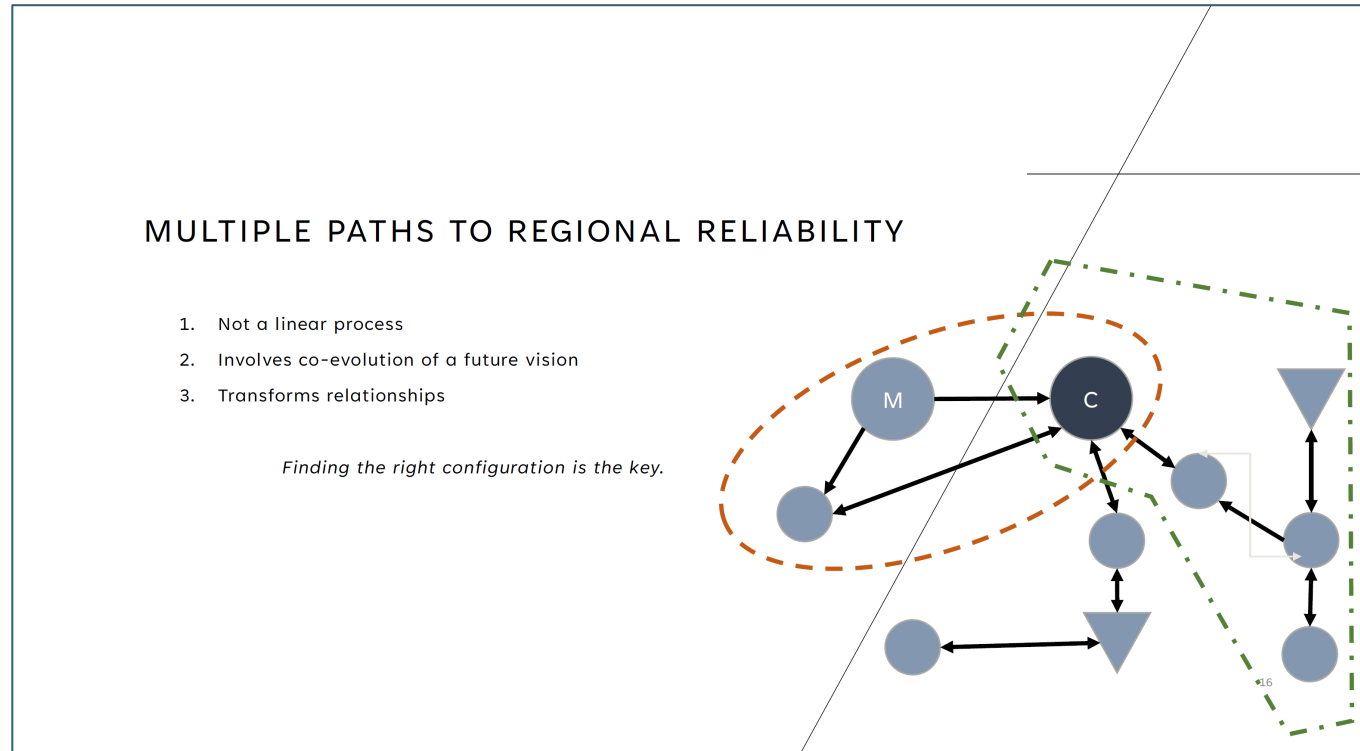
**OUTDOOR IRRIGATION:
LIMITED TO 1 DAY PER WEEK**

Check with your local water provider for specific watering restrictions and limitations.



A New Model of Resilience

- In September 2022, Calleguas' Board revisited its Strategic Plan and determined that the future direction of Calleguas should include a greater level of resilience cultivated through partnerships and regional collaboration to develop water supply projects, storage projects, and programs.



How We Got Here...and Where We're Going

2017: WSAS Begins

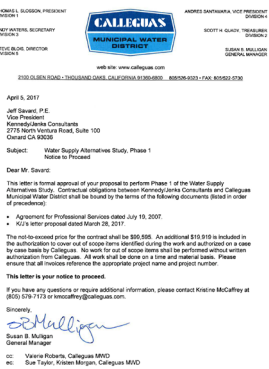
2021: 5% SWP Allocation

2022: 5% SWP Allocation

2022: WSAS Complete

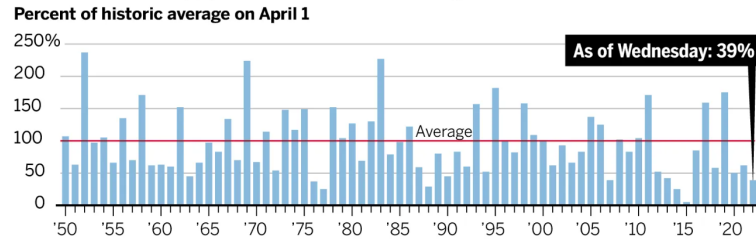
2022: Calleguas Board Shifts to New Model of Resilience

2023: WRIST



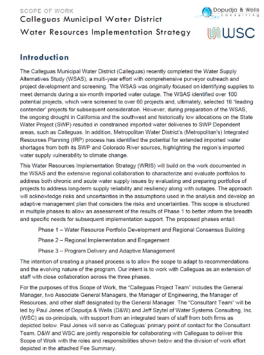
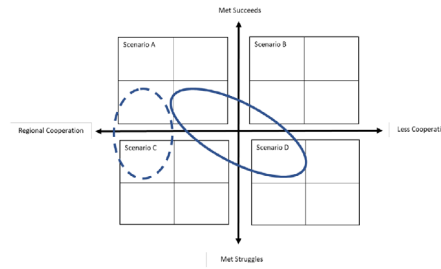
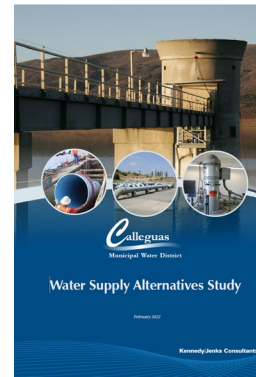
CALIFORNIA'S DROUGHT WORSENS

On Wednesday, the Sierra Nevada snowpack, the source of one-third of California's water supply, was 39% of its historical average.



Source: California Department of Water Resources

BAY AREA NEWS GROUP





WRIST

- Water Resources Implementation Strategy (WRIST) builds on the WSAS and the history of extensive regional collaboration to characterize and evaluate portfolios to address both chronic and acute water supply issues by evaluating and preparing portfolios of projects to address long-term supply reliability and resiliency along with outages.
- Approach acknowledges risks and uncertainties in the assumptions used in the analysis and develop an adaptive management plan that considers the risks and uncertainties.

WRIST

- Phase 1 – Water Resource Portfolio Development and Regional Consensus Building
- Phase 2 – Regional Implementation and Engagement
- Phase 3 – Program Delivery and Adaptive Management



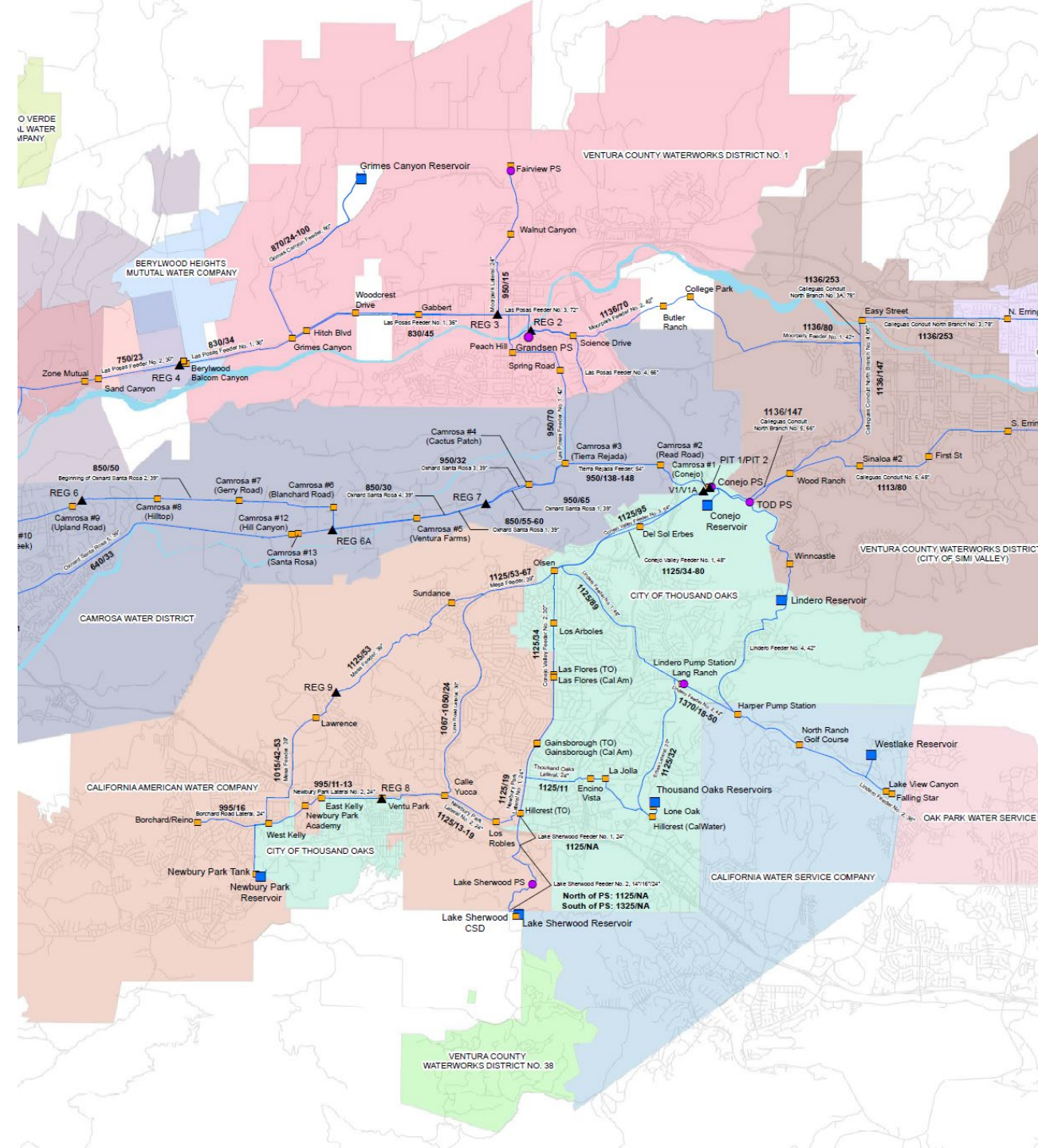
WRIST

- *Phase 1 – Water Resource Portfolio Development and Regional Consensus Building*
- Phase 2 – Regional Implementation and Engagement
- Phase 3 – Program Delivery and Adaptive Management



WRIST

- *Confirm and characterize* each partner agency's:
 - Key water resource assets, priorities, needs, drivers, and constraints.
 - Applicable projects from WSAS.
 - Additional water resource opportunities for consideration.
 - Existing and potential future interagency roles and relationships.
 - Effective engagement strategies.
 - Leaders and decision-makers for engagement.



WRIST

- *Conduct a series of individual meetings and workshops with potential partner agencies* to determine:
 - Specific supply, reliability and resiliency problems that need to be addressed.
 - Desired outcomes for the WRIST at the regional, wholesale, and retail water service levels.
 - Criteria that define success for the WRIST at the regional, wholesale, and retail levels.
 - How the success criteria are integrated.
 - How roles, responsibilities and relationships need to evolve between Calleguas, retail partners, and regional partners to successfully implement the WRIST.



WRIST

- *Develop three to five water supply portfolios* reflecting different themes and approaches.
- *Analyze the portfolios* using evaluation criteria, including lifecycle cost, yield, reliability, permitting, phasing, and implementation considerations.
- *Conduct sensitivity analysis* that alters evaluation criteria weighting for different sensitivity weightings.
- *Conduct resilience analysis* that considers different future conditions based upon risk and uncertainties.

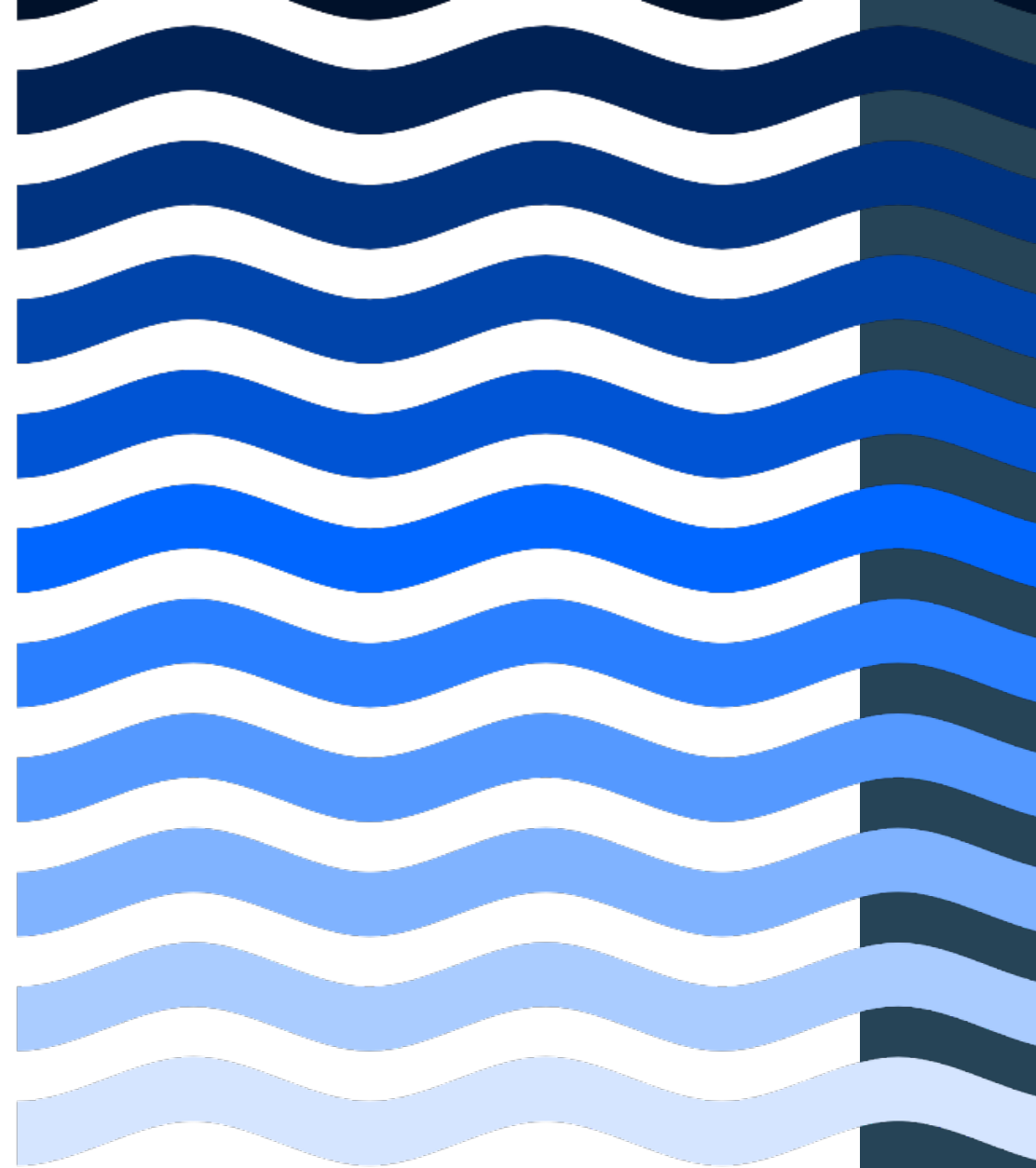
WRIST

- *Develop refined water supply portfolios* based upon evaluation of this initial criteria, sensitivity, and resilience analysis.
- *Present preliminary findings* to potential partner agencies and make modifications, as necessary.
- *Develop a proposed portfolio delivery framework* including identifying interagency agreements and joint governance alternatives.
- *Update the portfolio analysis, identify the preferred portfolio and desirable portfolio options, and identify initial “no regrets” projects.*
- Prepare a *final report* summarizing the process and findings.

Work Completed to Date

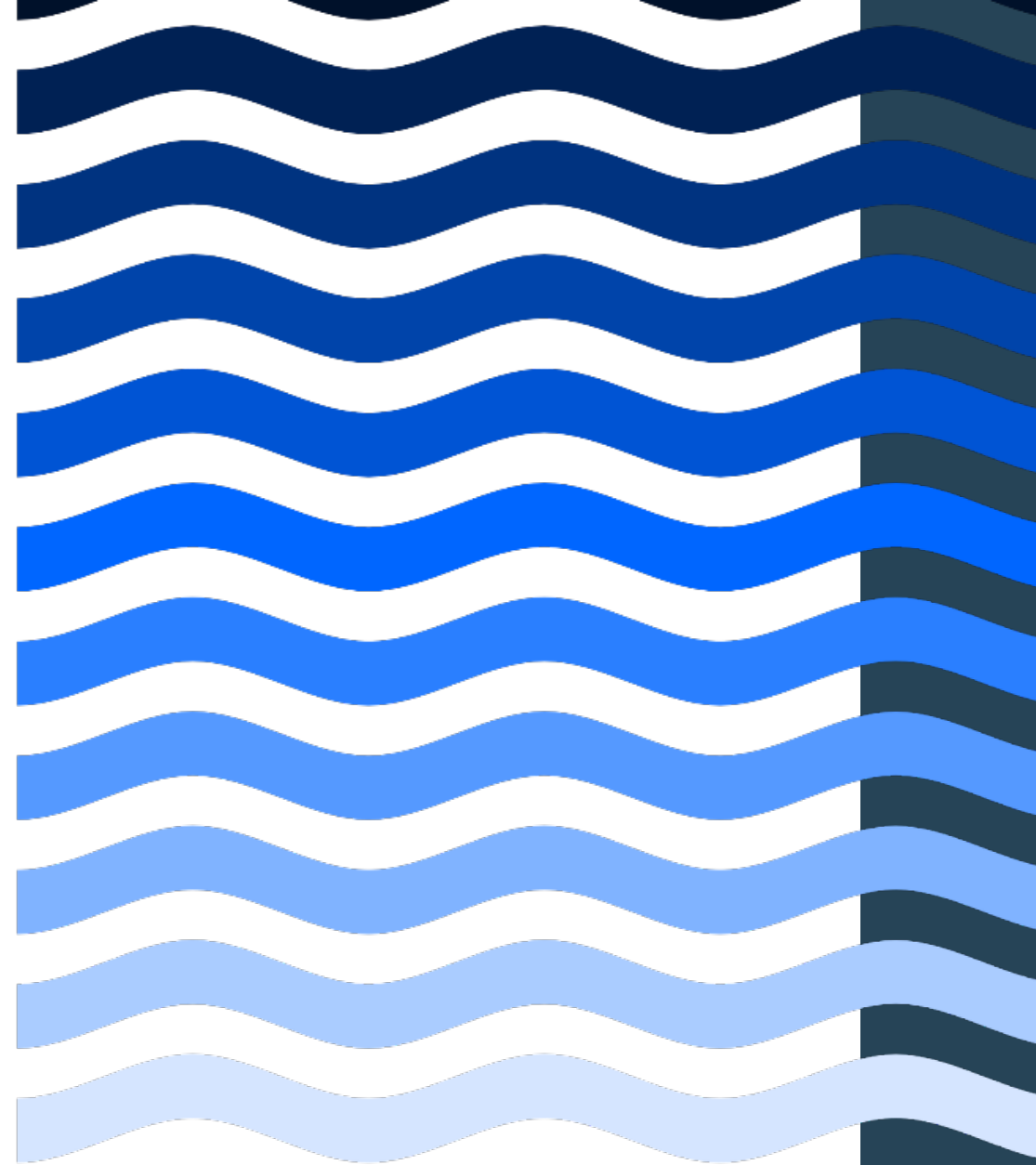
- *Seven individual and group interviews* with retail and regional partners:
 - Organizations within and outside the Calleguas service area are interested in exploring partnerships, interconnections, and regional projects.
 - More coordination and stronger leadership are needed regionally to facilitate cooperation and advocacy.
- *Partner Workshop #1* focusing on:
 - Desired Outcomes
 - Success Criteria

(regional, wholesale, retail levels)



Upcoming Work

- Evaluate existing systems, incorporate projects, develop initial portfolios.
- Technical analysis and portfolio evaluation process and refinement.



A scenic landscape featuring a large body of water, rolling green hills, and a cloudy sky. The word "Questions" is overlaid in white serif font.

Questions