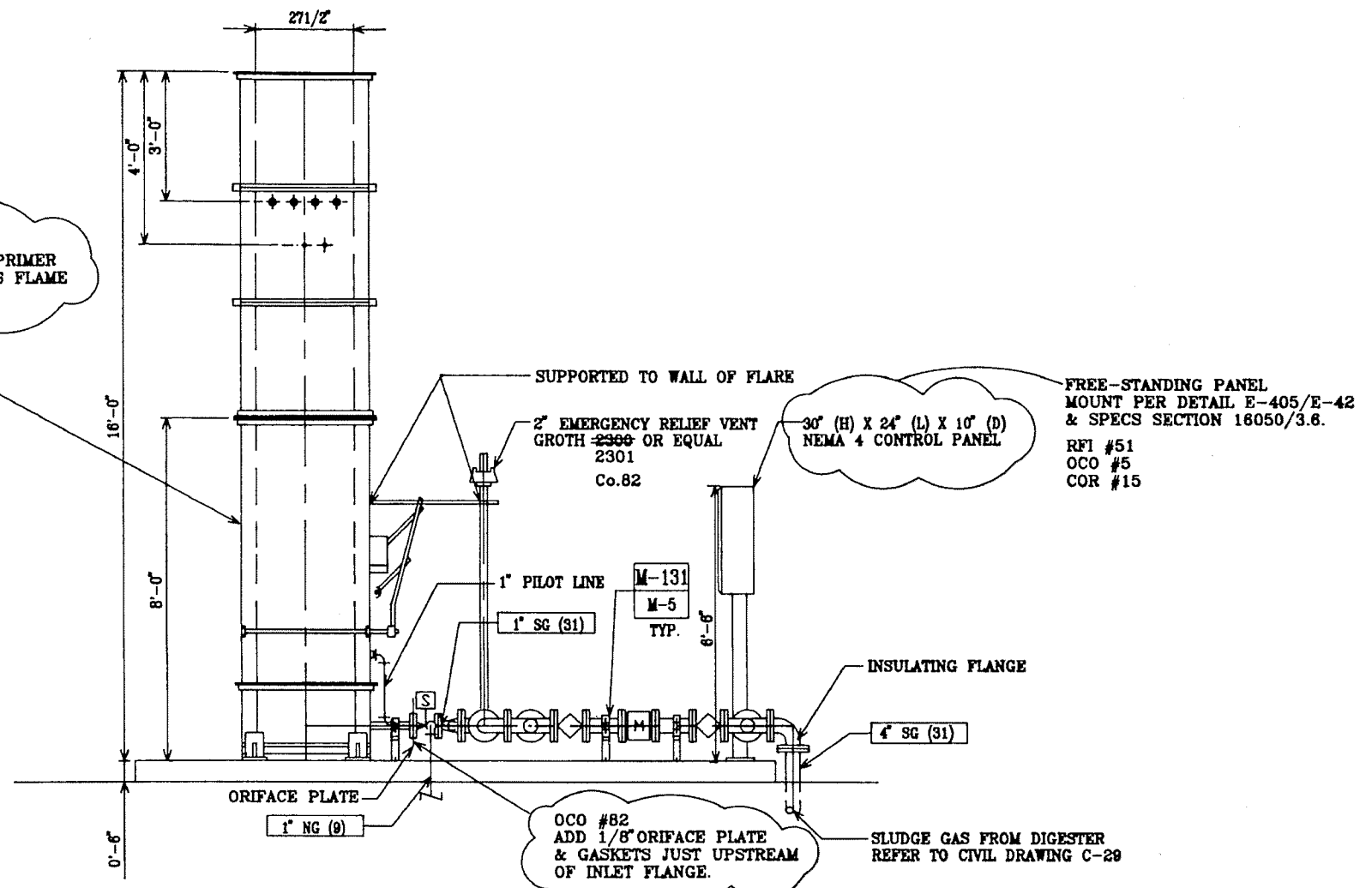
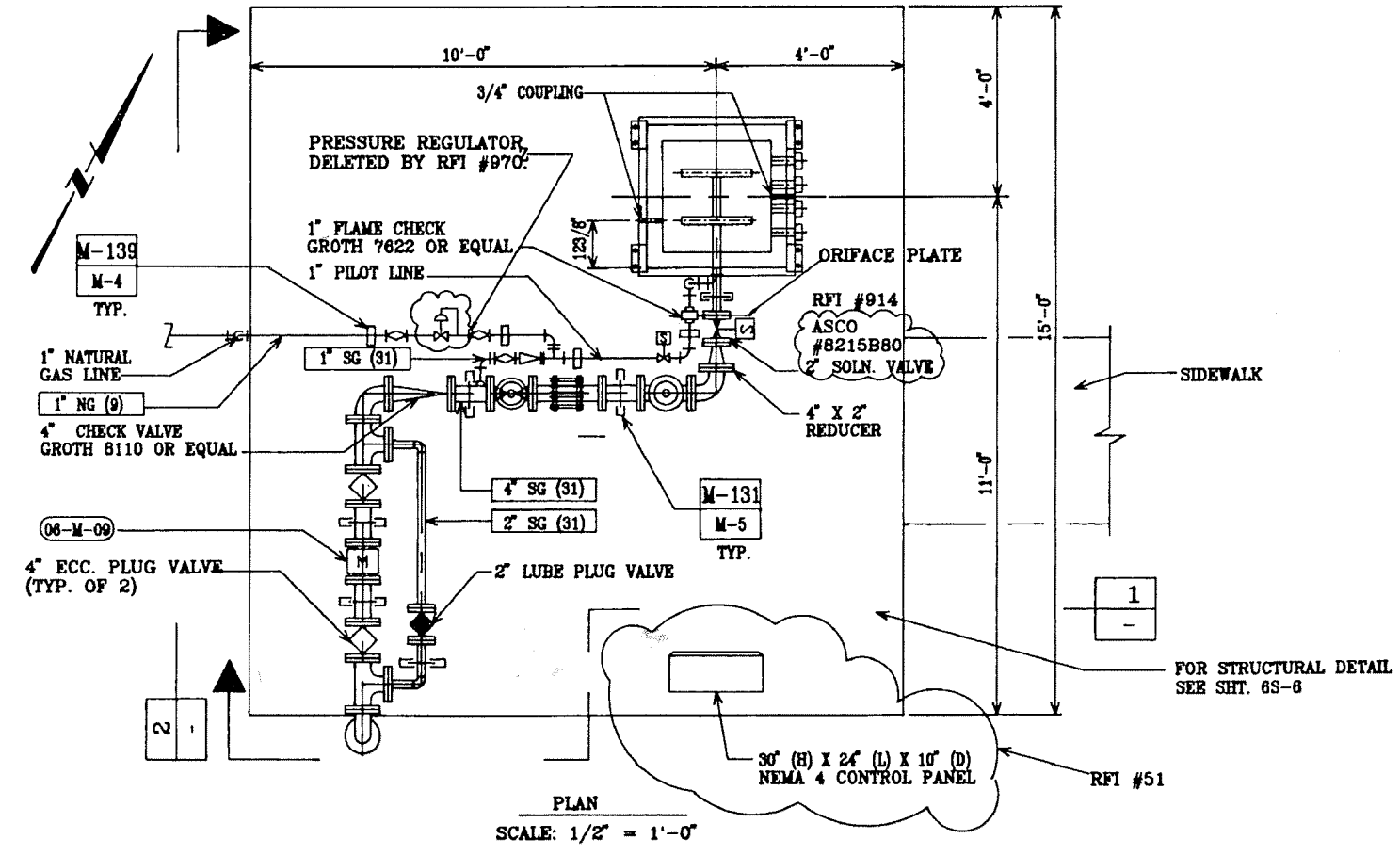


SECTION 1
SCALE: 1/2" = 1'-0"



SECTION 2
SCALE: 1/2" = 1'-0"



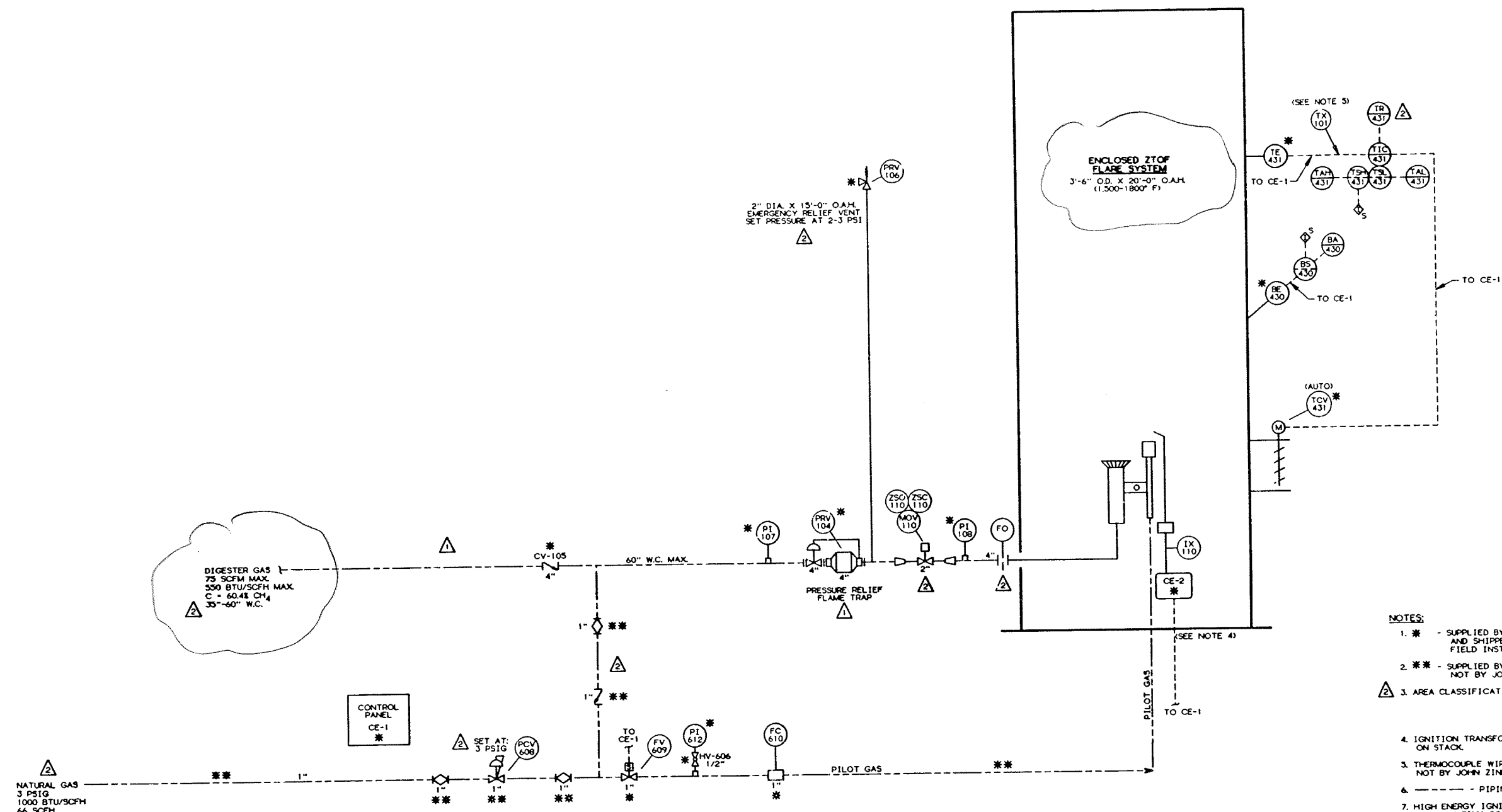
PLAN
SCALE: 1/2" = 1'-0"

RFI #888
PAINT SYSTEM
USE 2-3 MILS INORGANIC ZINC PRIMER
W/1-1.5 MILS SHERMAN WILLIAMS FLAME
CONTROL No.500 SERIES.

FREE-STANDING PANEL
MOUNT PER DETAIL E-405/E-42
& SPECS SECTION 16050/3.6.
RFI #51
OCO #5
COR #15

OCO #82
ADD 1/8" ORIFACE PLATE
& GASKETS JUST UPSTREAM
OF INLET FLANGE.

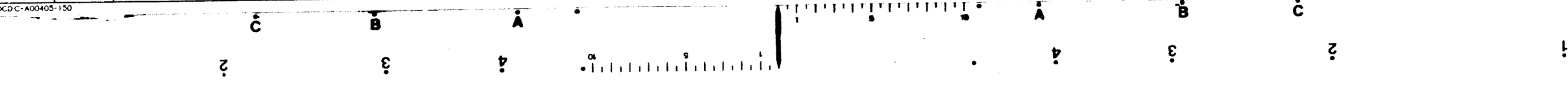
FOR STRUCTURAL DETAIL
SEE SHT. 6S-6

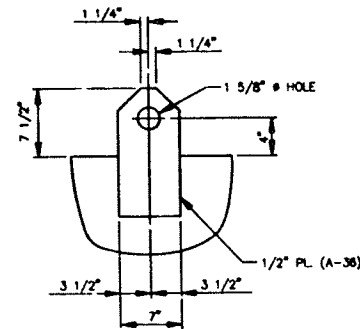
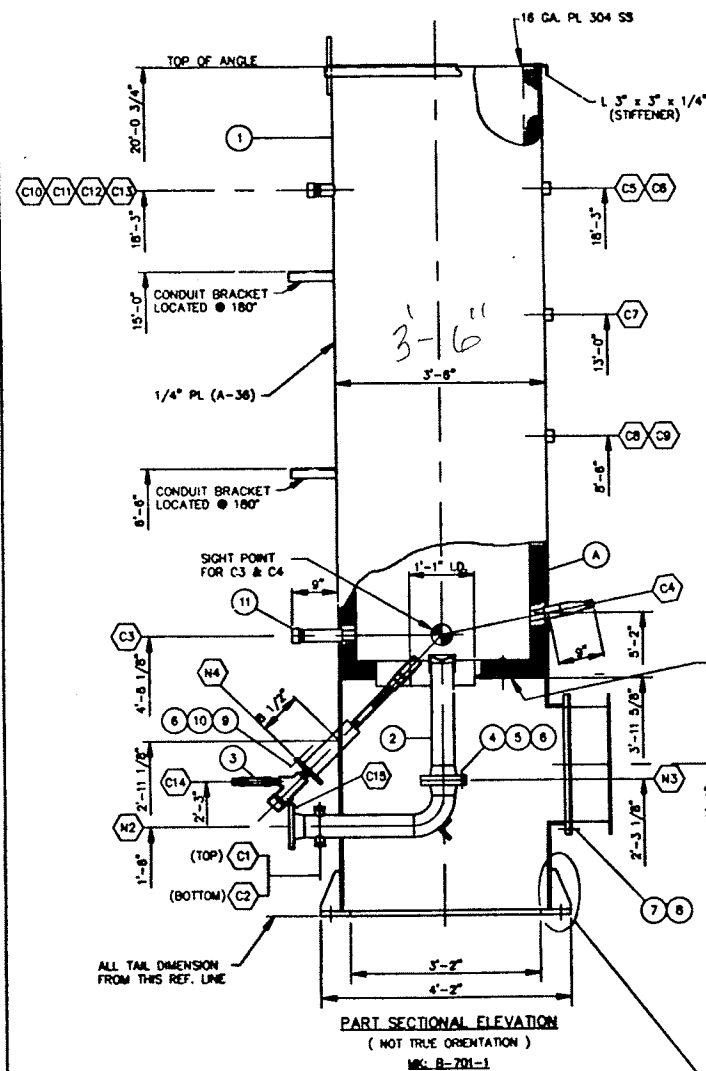


- NOTES:**
- * - SUPPLIED BY JOHN ZINK CO. AND SHIPPED LOOSE; FIELD INSTALLED BY OTHERS.
 - ** - SUPPLIED BY OTHERS; NOT BY JOHN ZINK CO.
 - △ 3. AREA CLASSIFICATION: CLASS 1, DIV. 2, GP. D (WITHIN 3'-0" OF FLARE) UNCLASSIFIED (OUTSIDE 3'-0" OF FLARE)
 - IGNITION TRANSFORMER IS MOUNTED IN CE-2 ON STACK.
 - THERMOCOUPLE WIRE ISA TYPE 'K' (BY OTHERS); NOT BY JOHN ZINK CO.
 - PIPING BY OTHERS.
 - HIGH ENERGY IGNITION CABLE 30' SUPPLIED BY JOHN ZINK CO. (INSTALLED BY OTHERS).

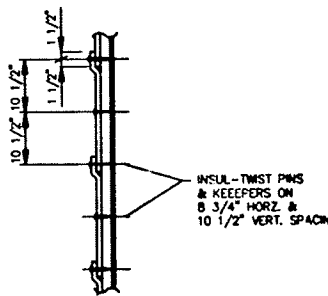
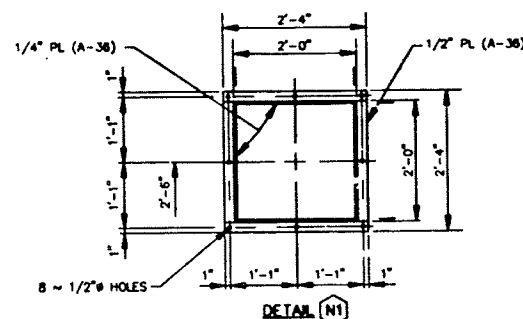
BASE NUMBER APPROVAL
DCDC-A00405-150

THIS DRAWING AND THE INFORMATION REVEALED BY IT IS SUBMITTED WITH THE UNDERSTANDING THAT IT IS THE CONFIDENTIAL AND PROPRIETARY PROPERTY OF JOHN ZINK CO. AND IS NOT TO BE DISCLOSED TO OTHERS WITHOUT WRITTEN PERMISSION. UNAUTHORIZED USE IS EXPRESSLY FORBIDDEN. ALL DOCUMENTS MUST BE RETURNED UPON REQUEST.									
FOR: MORLEY CONSTRUCTION USER: LAS VIRGENES MUNICIPAL WATER DIST JOB SITE: CALABASA, CA									
S.O. NO. (FS) AD-00405					PARTS AND SERVICE, CALL (918) 234-2751 FAX (918) 234-2700				
P.O. NO. P000222					DRAWING NUMBER B-F-A00405-150				
2	REVISED PER CUSTOMER COMMENTS, VDR #32731	Boh	TW	8-3-93	DR: Boh	DATE: 3-19-93	CERTIFIED	SCALE	REV 2
1	REVISED FOR CUSTOMER RE-APPROVAL	Boh	MAB	4-8-93	DR: MAB	DATE:			
NO.	REVISION DESCRIPTION	BY	CK	APP.	DATE	APP.	DATE		

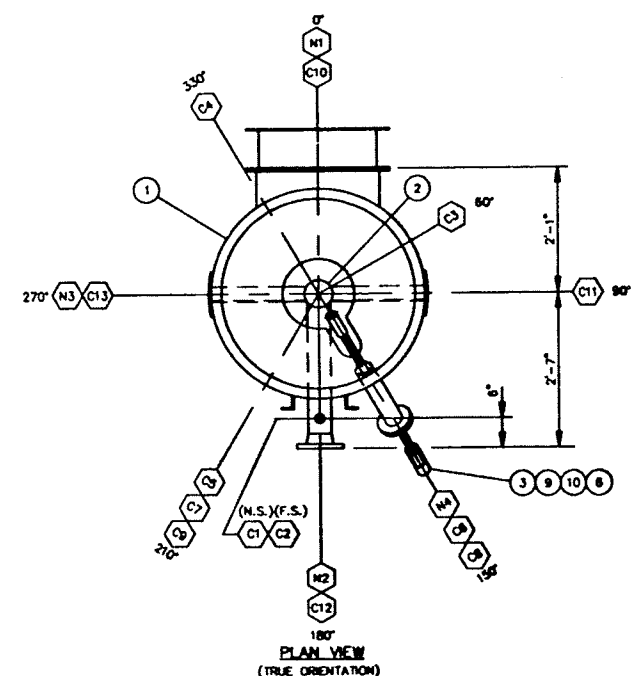
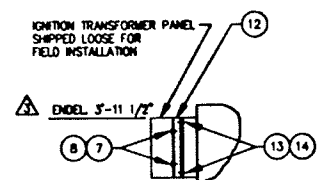




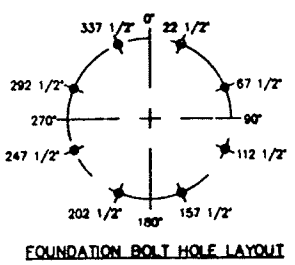
LIFTING LUG DETAIL
(2 REQ'D. LOC. @ 90° & 270°)
(NOTE: CUT OFF LUGS AFTER STACK ERECTION)



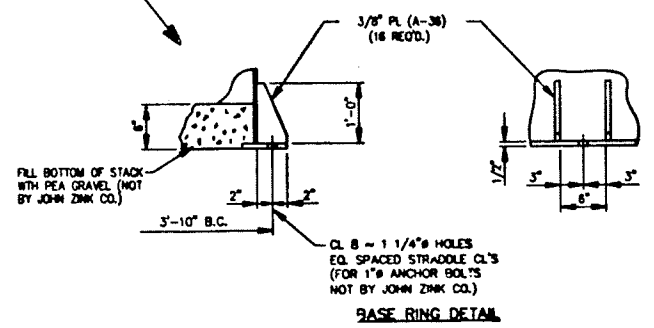
INSULATION DETAILS



PLAN VIEW
(TRUE ORIENTATION)



FOUNDATION BOLT HOLE LAYOUT



BASE RING DETAIL

PARTS LIST (1 REQ'D)				
ITEM	QTY.	DESCRIPTION	MARK NO.	MA/F.L.
1	1	FLARE STACK ASSEMBLY	B-701-1	
2	1	FLARE TIP ASSEMBLY	D-703-1	
3	1	PILOT ASSEMBLY	B-302-1	
4	1	GASKET, 4"-150 LB. P.F. x 1/16" THK.	C4-150-R	C4401
5	8	STUD BOLT, 5/8" x 4" LG.	S-5-4	A-193-B7
6	24	HEX NUT, 5/8"	SN-5	A-194-2H
7	12	HEX HEAD BOLT, 3/8" x 1 1/2" LG.	H-3-1 1/2	A-307 ZINC PL.
8	12	HEX NUT, 3/8"	HN-3	A-307 ZINC PL.
9	1	GASKET, 3"-150 LB. P.F. x 1/16" THK.	G3-150-F	C4401
10	4	STUD BOLT, 5/8" x 2 1/2" LG.	S-5-2 1/2	A-193-B7
11	1	SIGHT PORT	B-STD-0095	PIREX/M
12	1	PANEL CE-2 ADAPTER BRACKET	D-707-1	
13	4	HEX HEAD BOLT, 1/4" x 1" LG.	H-2-1	A-307 ZINC PL.
14	4	HEX NUT, 1/4"	HN-2	A-307 ZINC PL.

NOZZLE LEGEND				
N1	1	DAMPER CONN. - SEE DETAIL		
N2	1	WASTE GAS CONN. - 4"-150 LB. F.F.		
N3	1	FLARE TIP CONN. - 4"-150 LB. R.F.		
N4	1	PILOT MTE. 3/8" PL FLANGE W/ 3" - 150# DRILLING		

DESIGN DATA				
WINDLOAD (PER ASCE 7-88)				70 M.P.H.
SEISMIC (PER ASCE 7-88)				ZONE 4
SHEAR @ BASE				3.75 K*
MOMENT @ BASE				48.0 K-FT*
DEADLOAD				3.17 K
SHELL DESIGN TEMPERATURE				250° F
CORROSION ALLOWANCE				0.0

* SEISMIC LOAD GOVERNS DESIGN

LIFTING NOTES

A: MAIN CRANE AT TOP REQUIRES SPREADER BAR (BY OTHERS)
 B: LIFTING LUGS DESIGN FOR 13.5 TON CROSBY ANCHOR SHACKLE AND VERTICAL SLINGS.

INSULATION LEGEND

A: 1" THK. PREMIER RT, 8 LB. DENSITY, 2400° F (OR EQUAL) BACKED WITH 2" THK. PREMIER RT, 6 LB. DENSITY, 2400° F (OR EQUAL) ON RCONCEL PINS & KEEPERS

NOTES

1: BOLT HOLES TO STRADDLE NORM. CL'S UNLESS NOTED
 2: FLARE ASSY IS NOT TO BE USED AS AN ANCHOR POINT FOR CUSTOMER PIPING
 3: PRE-TENSION ANCHOR BOLTS BY THE "TURN OF THE NUT" METHOD / ASC
 4: IGN. WIRE & T.C. WIRE MUST BE RUN IN SEPARATE CONDUIT
 5: TAG NO.'S TO BE PRECEDED BY JOHN ZINK SHOP ORDER NO.
 6: FINISH (EXT. C.S., INSIDE OF SKIRT, & BTRY. OF FLOOR PLATE)
 SANDBLAST PER SSPC-SP-10 &
 PRIME W/ SHER-BIL ZINC CLAD 1 (2.5-3 MILS D.F.T.)
 INTERMEDIATE COAT: "GLID-GUARD" CORROSION RESISTANT HS EPOXY NO. 5487 W/ CURING AGENT NO. 5489
 FINISH COAT: "GLID-GUARD" SILICONE ALKYD NO. 5540 TINTED TO GLODDEN COLOR "FAWN BEIGE-NUBELAR"

per Brandy Johnson @ 75 refer max 100
S.Z 1/4/05

REVISION DESCRIPTION									
3	REV. ELEV. OF PANEL CE-2 FROM 3-9" TO 3-11 1/2"	DLB	DLB	DLB	8-16-93	DLB	DLB	DLB	DLB
2	REV. NOTE 6, ITEMS 7 & 8, ADDED ITEMS 12, 13 & 14	DLB	DLB	DLB	8-12-93	DLB	DLB	DLB	DLB
1	ADDED MARK NO'S. TO PARTS LIST	DLB	DLB	DLB	5-26-93	DLB	DLB	DLB	DLB

NO.	REVISION DESCRIPTION	BY	CHK.	APP.	DATE	APP.	DATE
-----	----------------------	----	------	------	------	------	------

THIS DRAWING AND THE INFORMATION REVEALED BY IT IS SUBMITTED WITH THE UNDERSTANDING THAT IT IS THE CONFIDENTIAL AND PROPRIETARY PROPERTY OF JOHN ZINK CO. AND IS NOT TO BE DISCLOSED TO OTHERS WITHOUT WRITTEN PERMISSION. UNAUTHORIZED USE IS EXPRESSLY FORBIDDEN. ALL DOCUMENTS MUST BE RETURNED UPON REQUEST.

FOR MORE CONSTRUCTION
 LUGS W/SHES MAIL WATER DIST.

JOHN ZINK
 A KOCH INDUSTRIES COMPANY

JOHNSON CALABASAS, CA
 PARTS AND SERVICE, CALL (818) 234-2751 FAX (818) 234-2700

ENCLOSED GROUND FLARE ASSEMBLY
 (3'-6" x 20'-0" WITH 1" - 4" TIPS)

S.B. NO. AQ 00405
 P.A. NO. 000222

DATE: 2-26-93
 DATE: 3-10-93
 DATE: 3-11-93

CERTIFIED
 DRAWING NUMBER: B-F-400405-301
 SCALE: 3/4"=1'-0"