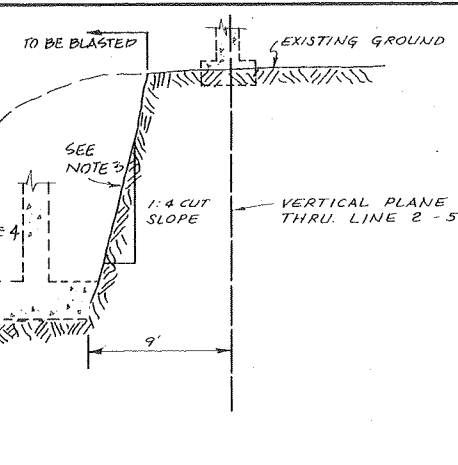
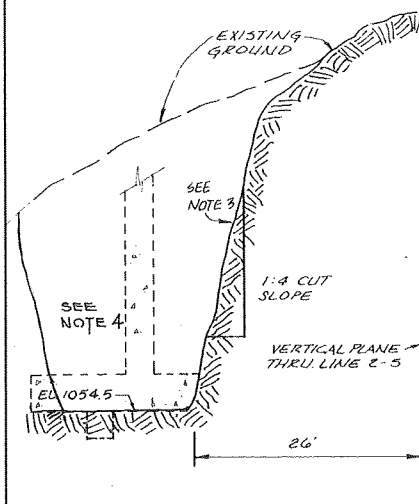


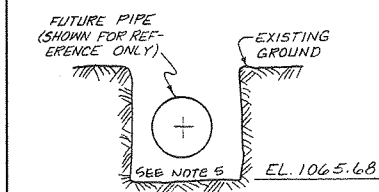
SECTIONS A-A & B-B
N.T.S.



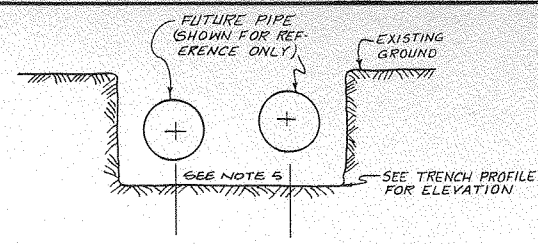
SECTION C-C
N.T.S.



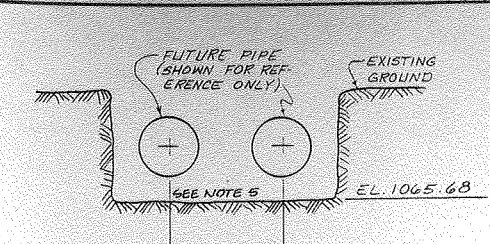
SECTION E-E
N.T.S.



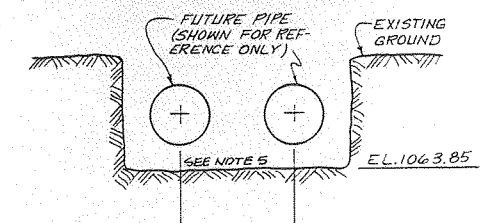
SECTION F-F
N.T.S.



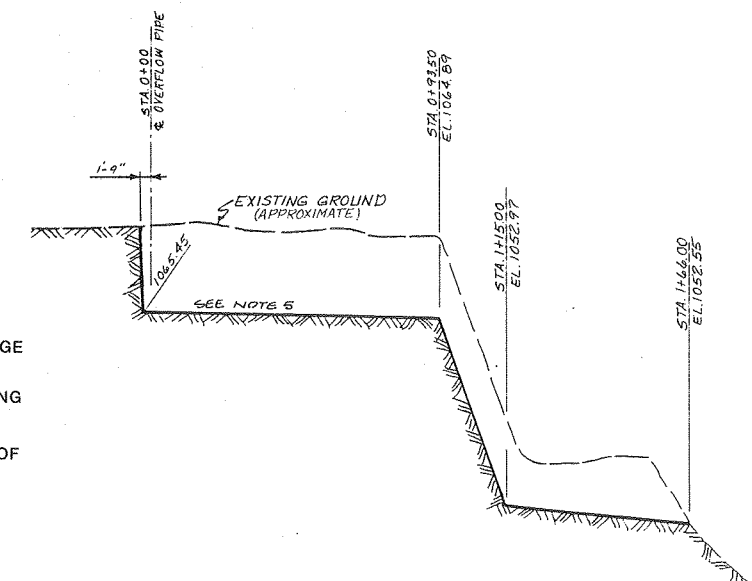
SECTION G-G
N.T.S.



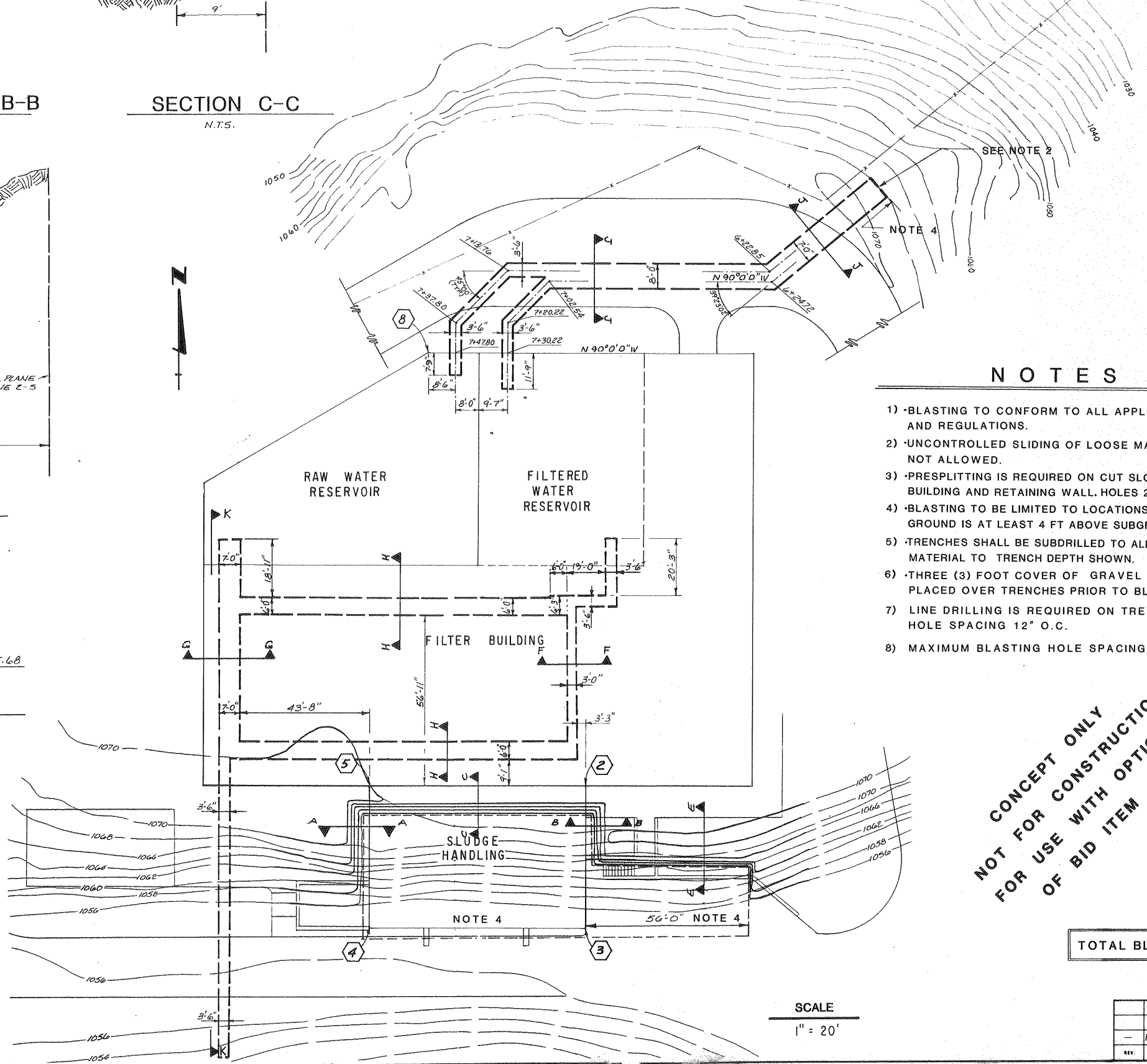
SECTION H-H
N.T.S.



SECTION J-J
N.T.S.



SECTION K-K
N.T.S.



NOTES

- 1) BLASTING TO CONFORM TO ALL APPLICABLE LAWS AND REGULATIONS.
- 2) UNCONTROLLED SLIDING OF LOOSE MATERIAL IS NOT ALLOWED.
- 3) PRESPLITTING IS REQUIRED ON CUT SLOPES FOR SLUDGE BUILDING AND RETAINING WALL. HOLES 24" O.C.
- 4) BLASTING TO BE LIMITED TO LOCATIONS WHERE EXISTING GROUND IS AT LEAST 4 FT ABOVE SUBGRADE.
- 5) TRENCHES SHALL BE SUBDRILLED TO ALLOW REMOVAL OF MATERIAL TO TRENCH DEPTH SHOWN.
- 6) THREE (3) FOOT COVER OF GRAVEL TO BE PLACED OVER TRENCHES PRIOR TO BLASTING.
- 7) LINE DRILLING IS REQUIRED ON TRENCHES. HOLE SPACING 12" O.C.
- 8) MAXIMUM BLASTING HOLE SPACING TO BE 36" O.C.

CONCEPT ONLY
 NOT FOR CONSTRUCTION
 FOR USE WITH OPTION 1
 OF BID ITEM #21

COORDINATES

#	N	E
②	4,160,819.00	4,034,466.58
③	4,160,770.92	4,034,466.58
④	4,160,770.92	4,034,394.42
⑤	4,160,819.00	4,034,394.42
⑧	4,160,963.00	4,034,413.50

TOTAL BLASTED VOLUME = 2,200± CU. YDS.

SCALE
1" = 20'

DESIGN GH/J.R.		DRAWN J.R.G.		CHECKED J.K.		APP. G.H.		DATE 12-7-87		SHEET NO. 1	
REVISIONS		DESCRIPTION		DATE		PROJECT		DRAWING		SHEET	
12-7-87		ISSUED FOR BIDDING				LAS VIRGENES MUNICIPAL WATER DISTRICT		WESTLAKE DAM		FOUNDATION AND PIPE TRENCH PREPARATION BY BLASTING	
						Boyle Engineering Corporation		consulting engineers / architects		VENTURA, CA.	
						R.C.E. 42254		DATE		VT-L02-107-28	