

**NOTICE OF PUBLIC HEARING  
LAS VIRGENES MUNICIPAL WATER DISTRICT**

**TO RECEIVE PUBLIC INPUT REGARDING BOARD OF DIRECTOR  
DIVISION BOUNDARIES**

**NOTICE IS HEREBY GIVEN** that pursuant to California Elections Code Section 22001, the Board of Directors of Las Virgenes Municipal Water District will conduct a public hearing to receive input regarding potential redistricting of Director Divisions on Tuesday, March 1, 2022, at 9:00 AM, at Las Virgenes Municipal Water District Headquarters, Board Room, 4232 Las Virgenes Road, Calabasas, California 91302. The public is invited to provide input and/or submit information regarding the proposed division boundaries. The draft map is available on the District's website at [www.lvmwd.com/about-us/transparency/public-records/public-information-and-documents](http://www.lvmwd.com/about-us/transparency/public-records/public-information-and-documents).

Questions or input may be mailed to:

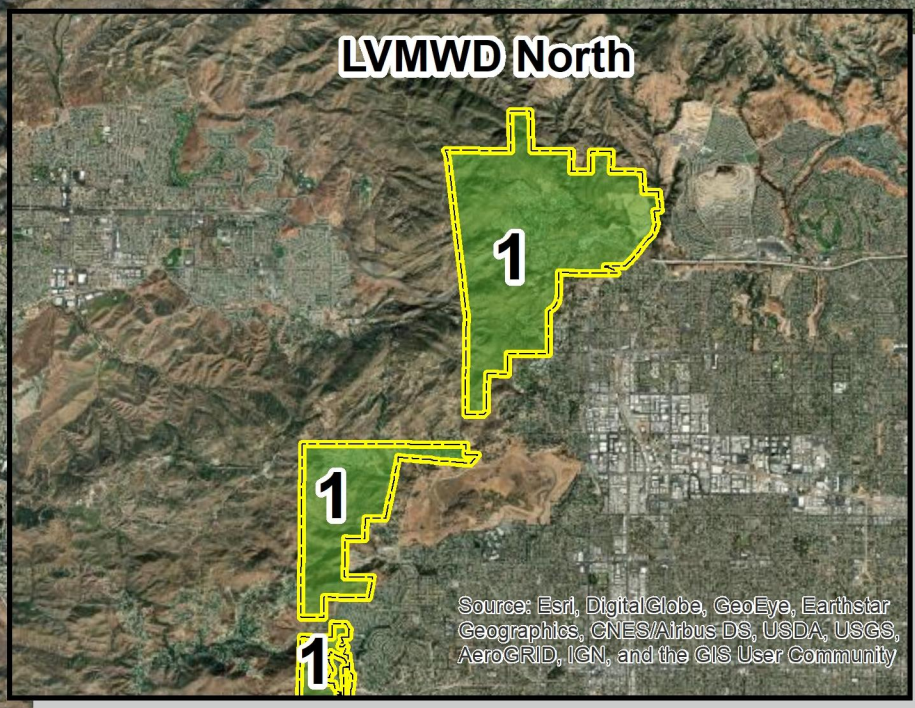
Las Virgenes Municipal Water District  
Attn: Executive Assistant/Clerk of the Board  
4232 Las Virgenes Road  
Calabasas, CA 91302

Or by email to: [jguzman@lvmwd.com](mailto:jguzman@lvmwd.com)

**BY ORDER OF THE BOARD OF DIRECTORS OF LAS VIRGENES MUNICIPAL  
WATER DISTRICT.**

/s/ Josie Guzman, MMC  
Deputy Secretary of the Board

Publish on February 17, 2022.



**Census 2010 Population**

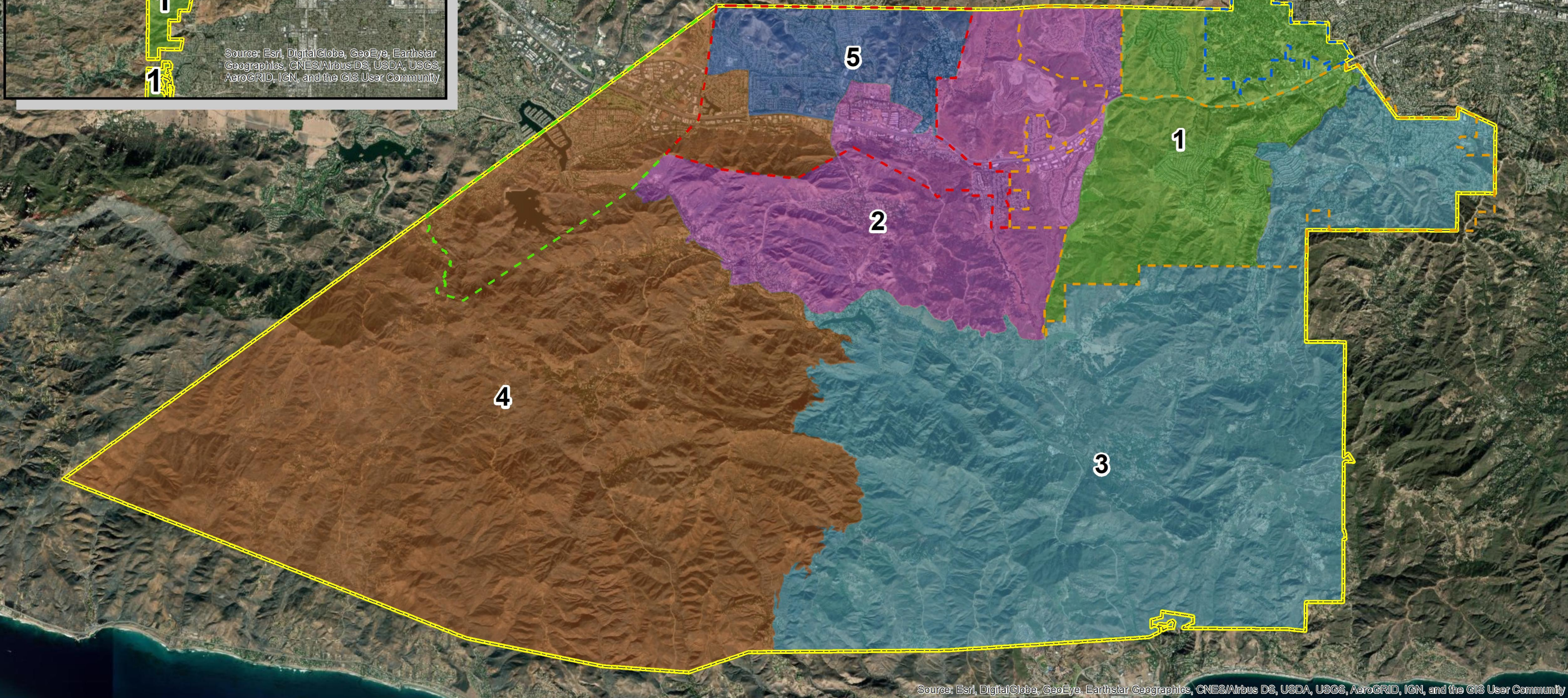
Division	Population	% Average
1	13262	98%
2	13706	101%
3	13609	101%
4	13379	99%
5	13672	101%
<b>Total</b>	<b>67628</b>	

**Legend**

- LVMWD Boundary
- Westlake Village
- Hidden Hills
- Calabasas
- Agoura Hills

**LVMWD Director Divisions - Current**

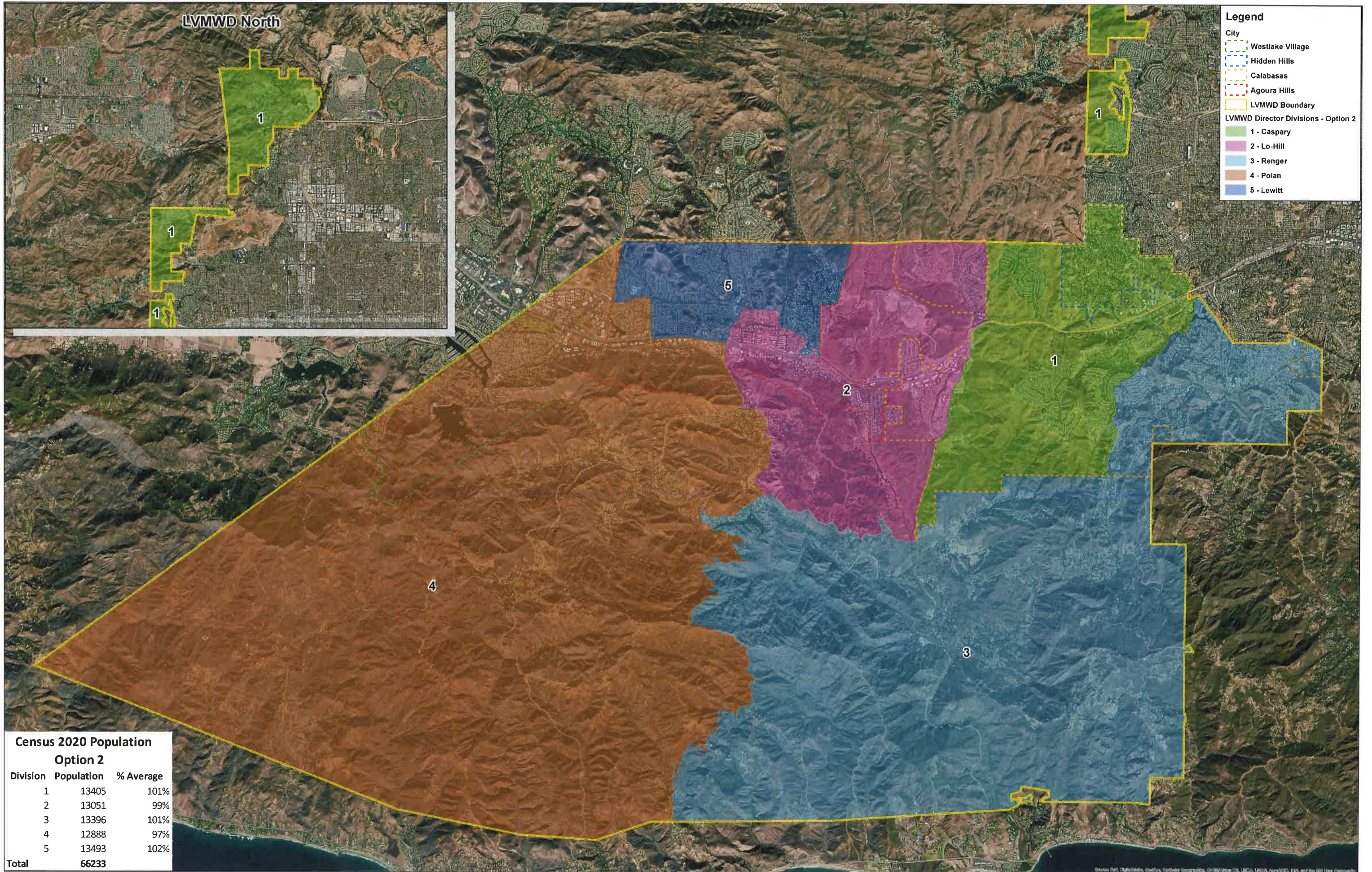
- 1 - Caspary
- 2 - Lo-Hill
- 3 - Renger
- 4 - Polan
- 5 - Lewitt



Source: Esri, DigitalGlobe, GeoEye, Earthstar Geographics, CNES/Airbus DS, USDA, USGS, AeroGRID, IGN, and the GIS User Community



**LVMWD Director Divisions - Current**



**Census 2020 Population**  
**Option 2**

Division	Population	% Average
1	13405	101%
2	13051	99%
3	13396	101%
4	12888	97%
5	13493	102%
<b>Total</b>	<b>66233</b>	

**LVMWD Director Divisions - Option 2 (Moved some 2020 Census Blocks from Division 2 to 4 to better equalize populations)**

