

**NOTICE OF PUBLIC HEARING
LAS VIRGENES MUNICIPAL WATER DISTRICT**

**TO RECEIVE PUBLIC INPUT REGARDING BOARD OF DIRECTOR
DIVISION BOUNDARIES**

NOTICE IS HEREBY GIVEN that pursuant to California Elections Code Section 22001, the Board of Directors of Las Virgenes Municipal Water District will conduct a public hearing to receive input regarding potential redistricting of Director Divisions on Tuesday, February 15, 2022, at 9:00 AM, at Las Virgenes Municipal Water District Headquarters, Board Room, 4232 Las Virgenes Road, Calabasas, California 91302. The public is invited to provide input and/or submit information regarding the proposed division boundaries. The draft map is available on the District's website at www.lvmwd.com/about-us/transparency/public-records/public-information-and-documents.

Questions or input may be mailed to:

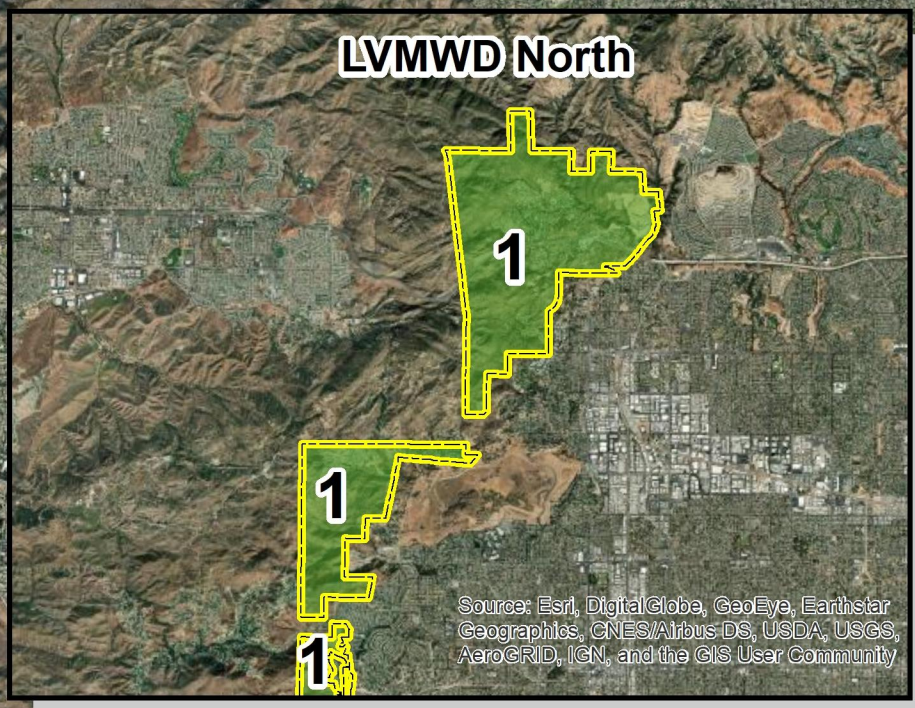
Las Virgenes Municipal Water District
Attn: Executive Assistant/Clerk of the Board
4232 Las Virgenes Road
Calabasas, CA 91302

Or by email to: jguzman@lvmwd.com

**BY ORDER OF THE BOARD OF DIRECTORS OF LAS VIRGENES MUNICIPAL
WATER DISTRICT.**

/s/ Josie Guzman, MMC
Deputy Secretary of the Board

Publish on February 10, 2022.



Census 2010 Population

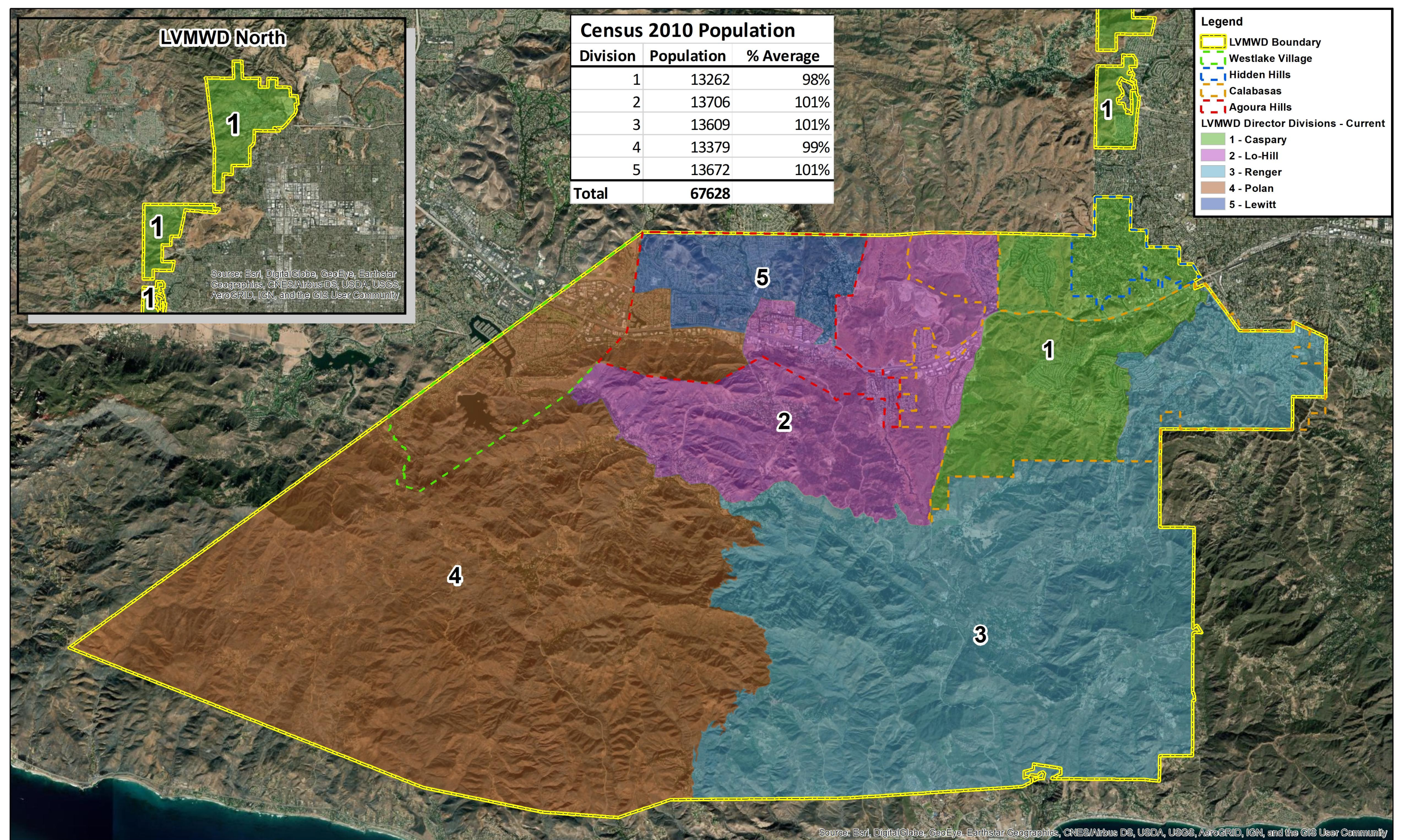
Division	Population	% Average
1	13262	98%
2	13706	101%
3	13609	101%
4	13379	99%
5	13672	101%
Total	67628	

Legend

- LVMWD Boundary
- Westlake Village
- Hidden Hills
- Calabasas
- Agoura Hills

LVMWD Director Divisions - Current

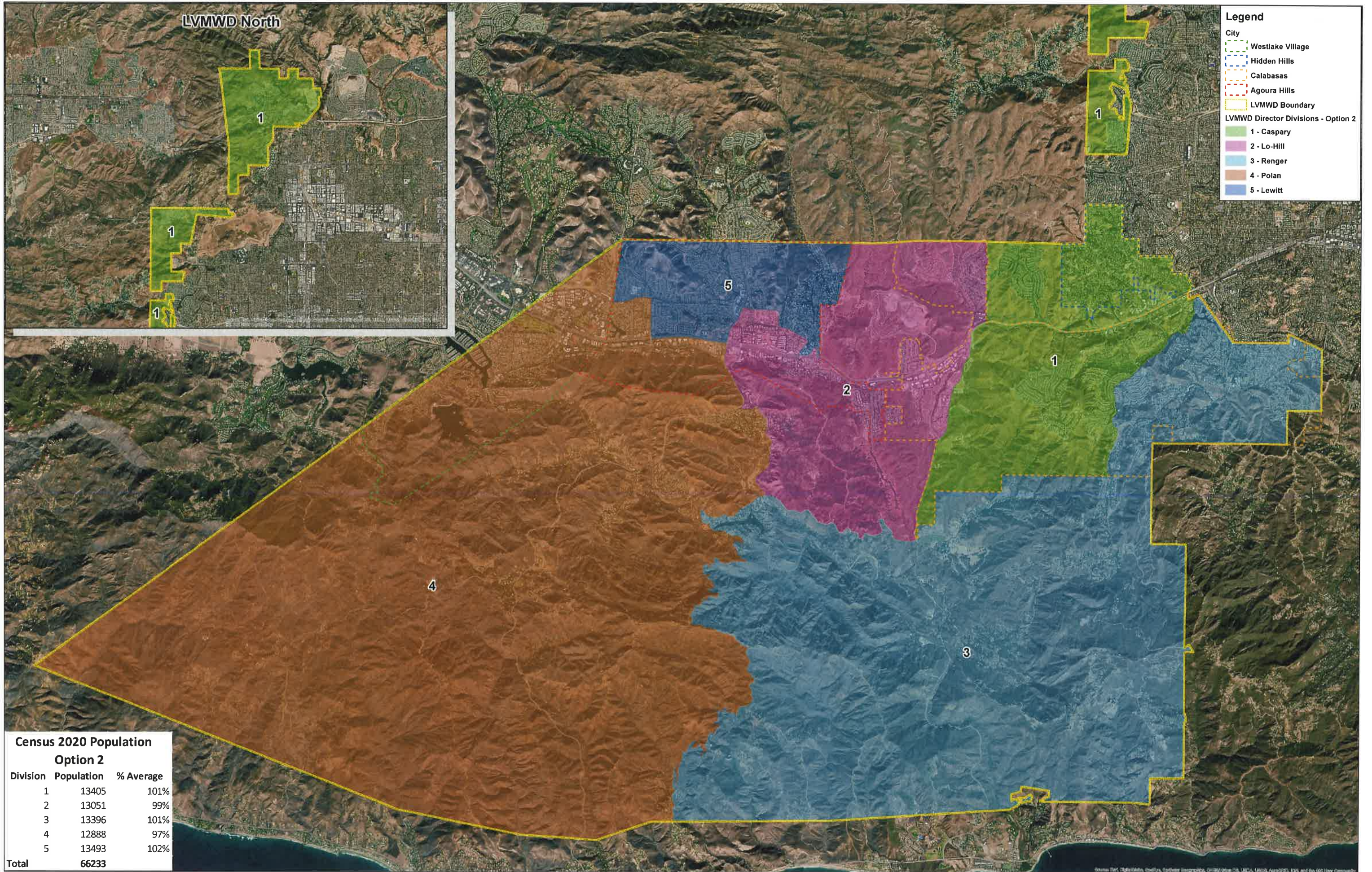
- 1 - Caspary
- 2 - Lo-Hill
- 3 - Renger
- 4 - Polan
- 5 - Lewitt



Source: Esri, DigitalGlobe, GeoEye, Earthstar Geographics, CNES/Airbus DS, USDA, USGS, AeroGRID, IGN, and the GIS User Community



LVMWD Director Divisions - Current



- Legend**
- City
- Westlake Village
 - Hidden Hills
 - Calabasas
 - Agoura Hills
 - LVMWD Boundary
- LVMWD Director Divisions - Option 2
- 1 - Caspary
 - 2 - Lo-Hill
 - 3 - Renger
 - 4 - Polan
 - 5 - Lewitt

Census 2020 Population
Option 2

Division	Population	% Average
1	13405	101%
2	13051	99%
3	13396	101%
4	12888	97%
5	13493	102%
Total	66233	

LVMWD Director Divisions - Option 2 (Moved some 2020 Census Blocks from Division 2 to 4 to better equalize populations)

