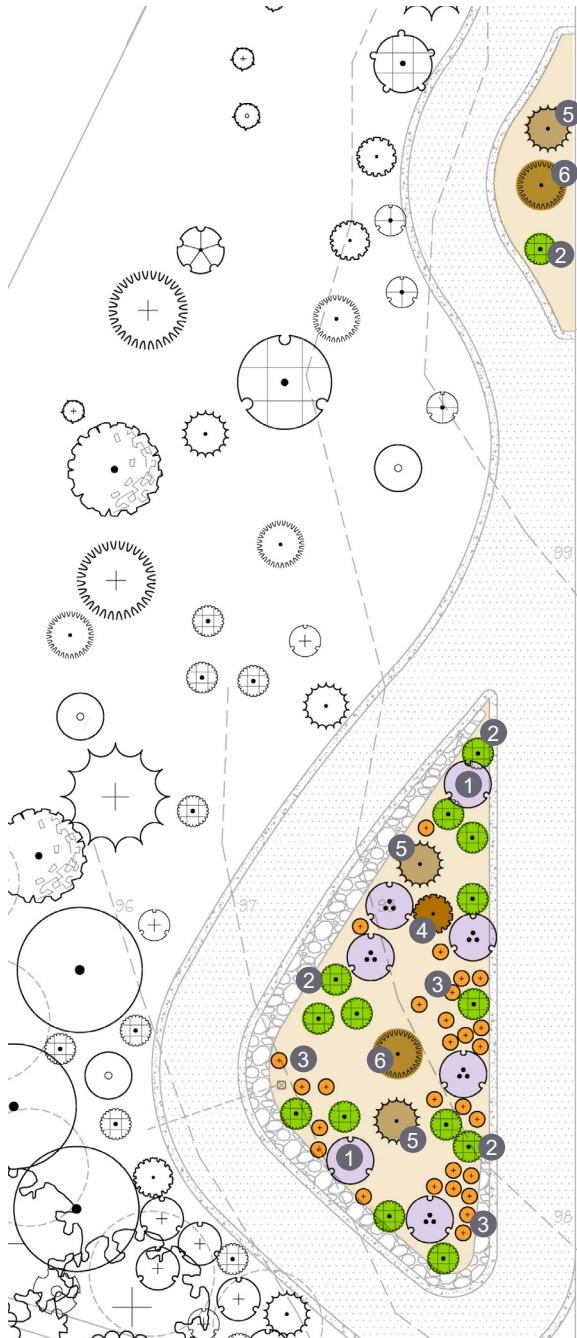
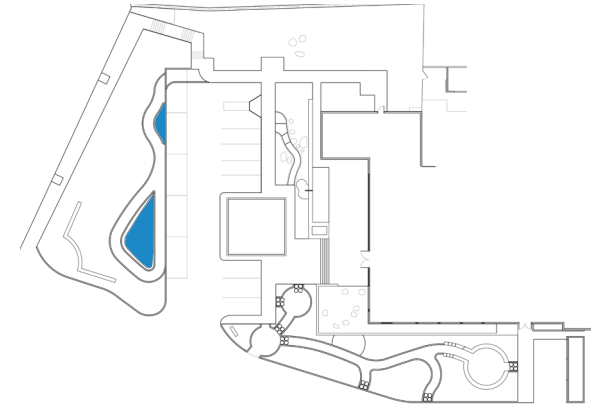




# Meadow Garden Plan



Key Plan



## Plant Legend

- ▼ 1 *Asclepias fascicularis*
- ▼ 2 *Bouteloua gracilis* 'Blonde Ambition'
- ▼ 3 *Eschscholzia californica*
- 4 *Muhlenbergia capillaris* 'Pink Flamingo'
- 5 *Muhlenbergia dubia*
- 6 *Muhlenbergia lindheimeri* 'Autumn Glow'

A meadow of wildflowers native to California creates a symphony of color and requires less maintenance than you think. Combine bunch grasses with a sprinkling of native wildflowers such as poppy and Farewell to Spring.

Native wildflowers prefer poor soil, making them a simple option for your garden.

Include perennial bunch grasses and evergreen shrubs and trees to maintain the meadow throughout the summer and fall.

▼ California native plant

