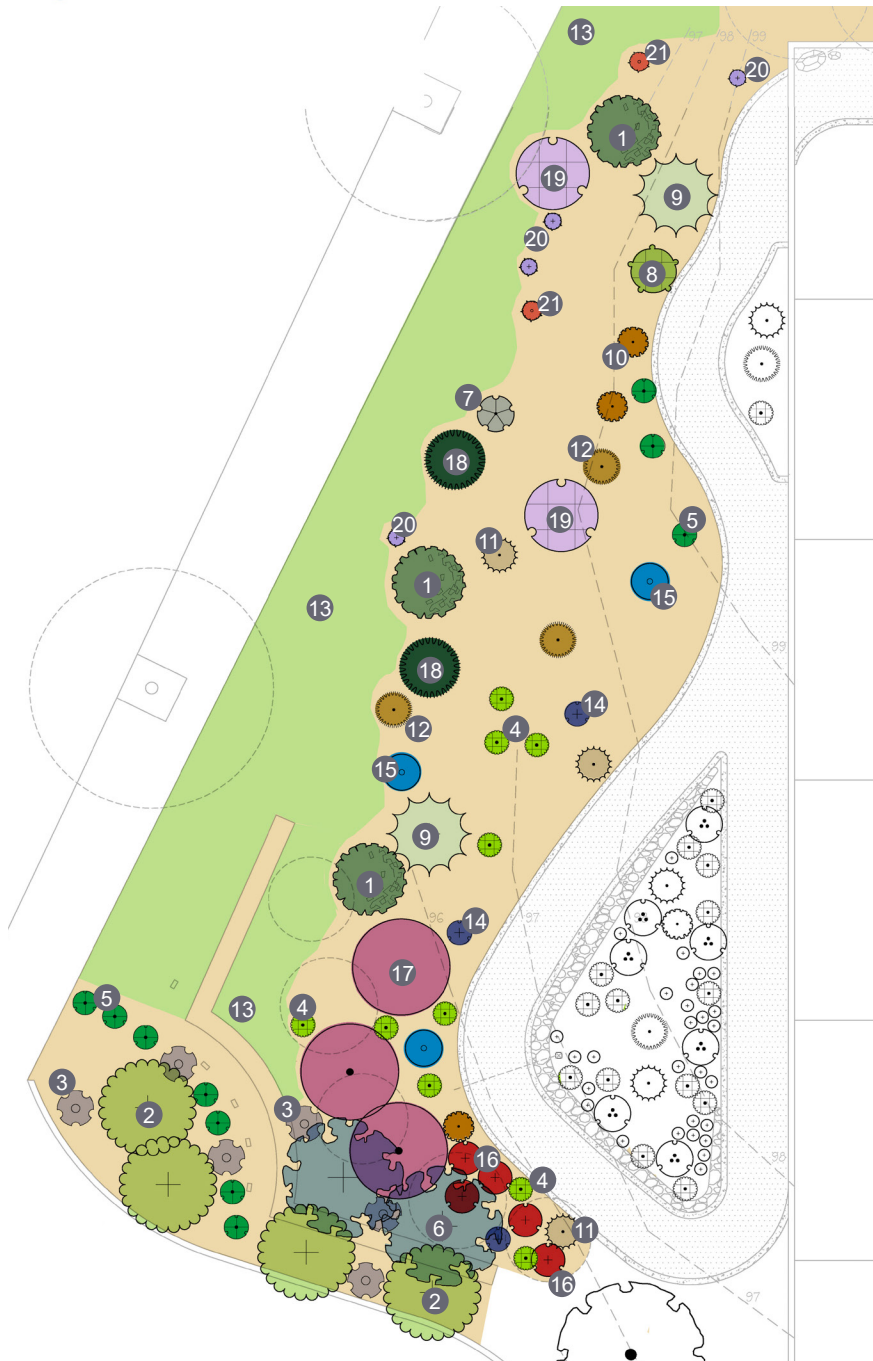
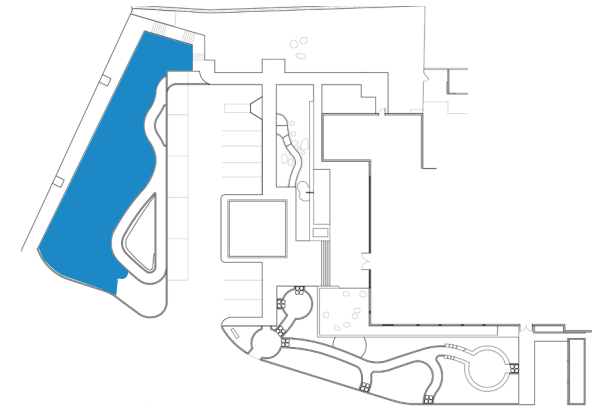




Hillside Garden Plan

Key Plan



Plant Legend

- | | | | |
|------|---|------|---|
| ▼ 1 | Arctostaphylos x 'John Dourley' | ● 12 | Muhlenbergia lindheimeri 'Autumn Glow' |
| ▼ 2 | Arctostaphylos x 'Pacific Mist' | ● 13 | Myoporum parvifolium |
| ▼ 3 | Aster chilensis 'Point St. George' | ▼ 14 | Penstemon heterophyllus 'Margarita Bop' |
| ▼ 4 | Bouteloua gracilis 'Blonde Ambition' | ▼ 15 | Penstemon spectabilis |
| ● 5 | Calylophus berlandii | ● 16 | Salvia greggii |
| ▼ 6 | Ceanothus griseus horizontalis 'Yankee Point' | ▼ 17 | Salvia leucophylla 'Point Sal' |
| ▼ 7 | Encelia farinosa | ▼ 18 | Salvia mellifera 'Terra Seca' |
| ▼ 8 | Eriogonum fasciculatum 'Warriner Lytle' | ▼ 19 | Salvia x 'Bee's Bliss' |
| ▼ 9 | Eriogonum giganteum | ▼ 20 | Salvia x 'Pozo Blue' |
| ● 10 | Muhlenbergia capillaris 'Pink Flamingo' | ▼ 21 | Sphaeralcea ambigua 'Louis Hamilton' |
| ● 11 | Muhlenbergia dubia | | |

Many attractive low to very low water use California native plants and grasses have deep and spreading roots that hold the soil in place and control erosion.

They can tolerate the hot sun exposure especially on south facing slopes where other plants would perish.

A mixture of plants with various root depths is best; mix trees, groundcovers, grasses and annual wildflowers.

▼ California native plant

