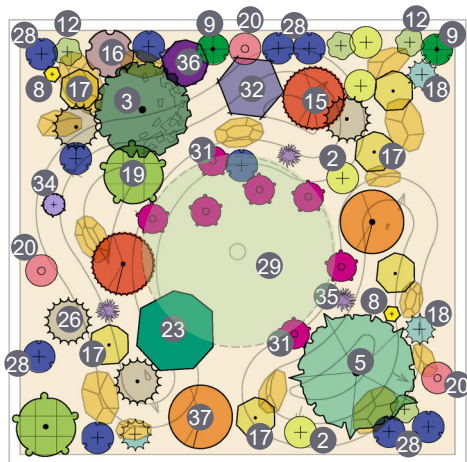
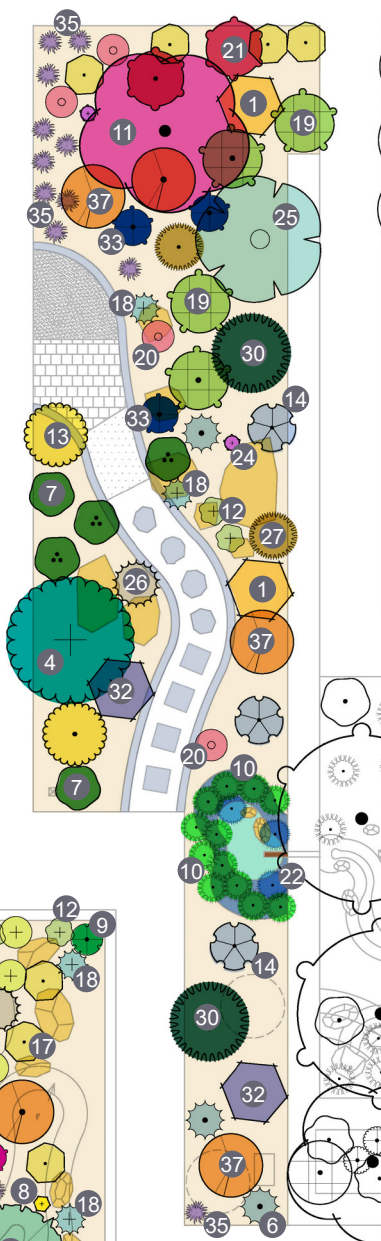
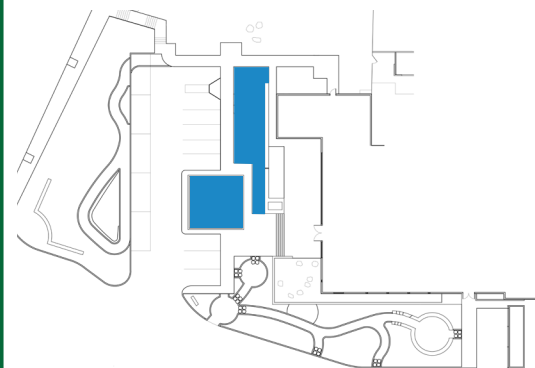




Oak Garden Plan



Plant Legend

- | | |
|---|--|
| ▼ 1 Abutilon palmeri | ▼ 19 Eriogonum fasciculatum 'Warriner Lytle' |
| ▼ 2 Achillea x 'Moonshine' | ▼ 20 Eriogonum grande rubescens |
| ▼ 3 Arctostaphylos x 'John Dourley' | ▼ 21 Galvezia speciosa |
| ▼ 4 Arctostaphylos x 'Pacific Mist' | ▼ 22 Juncus patens 'Elk Blue' |
| ▼ 5 Artemisia californica 'Canyon Grey' | ▼ 23 Keckiella cordifolia |
| ▼ 6 Artemisia pycnocephala 'David's Choice' | ▼ 24 Linanthus californicus |
| ● 7 Asteriscus sericeus | ▼ 25 Malacothamnus fasciculatus |
| ▼ 8 Baileya multiradiata | ● 26 Muhlenbergia dubia |
| ● 9 Calylophus berlandii | ● 27 Muhlenbergia lindheimeri 'Autumn Glow' |
| ● 10 Carex divulsa | ▼ 28 Penstemon heterophyllus 'Margarita Bop' |
| ▼ 11 Cercis occidentalis | ▼ 29 Quercus agrifolia |
| ▼ 12 Dudleya greenii | ▼ 30 Salvia mellifera 'Terra Seca' |
| ▼ 13 Encelia californica 'Paleo Yellow' | ▼ 31 Salvia spathacea |
| ▼ 14 Encelia farinosa | ▼ 32 Salvia x 'Dara's Choice' |
| ▼ 15 Epilobium canum 'Catalina' | ● 33 Salvia x 'Marine Blue' |
| ▼ 16 Epilobium canum 'Summer Snow' | ▼ 34 Salvia x 'Pozo Blue' |
| ▼ 17 Eriogonum compositum | ▼ 35 Sisyrinchium bellum |
| ▼ 18 Eriogonum crocatum | ▼ 36 Solanum xanti 'Mountain Pride' |
| | ▼ 37 Sphaeralcea ambigua |

Native oaks are a protected species vital to the local Southern Oak Woodland plant community and are culturally significant. Take care not to overwater oaks in the summer. Water them only during times of drought or when young or being established.

When planting a garden under a native California oak, select plants from native oak plant communities that tolerate dry summer conditions.

▼ California native plant

