



LAS VIRGENES MUNICIPAL WATER DISTRICT
4232 Las Virgenes Road, Calabasas, CA 91302

AGENDA
REGULAR MEETING

Members of the public wishing to address the Board of Directors are advised that a statement of Public Comment Protocols is available from the Clerk of the Board. Prior to speaking, each speaker is asked to review these protocols and **MUST** complete a speakers' card and hand it to the Clerk of the Board. Speakers will be recognized in the order cards are received.

The **Public Comments** agenda item is presented to allow the public to address the Board on matters not on the agenda. The public may present comments on any agenda item at the time the item is called upon for discussion.

Materials prepared by the District in connection with subject matter on the agenda are available for public inspection at 4232 Las Virgenes Road, Calabasas, CA 91302. Materials prepared by the District and distributed to the Board during this meeting are available for public inspection at the meeting or as soon thereafter as possible. Materials presented to the Board by the public will be maintained as part of the records of these proceedings and are available upon written request to the Clerk of the Board.

5:00 PM

March 22, 2011

PLEDGE OF ALLEGIANCE

1. CALL TO ORDER AND ROLL CALL

A The meeting was called to order at _____ p.m. by _____ in the District offices, and the Secretary called the roll.

<u>Board of Directors</u>	<u>Present</u>	<u>Left</u>	<u>Absent</u>
Lee Renger, President	_____	_____	_____
Joseph Bowman, Vice President	_____	_____	_____
Charles Caspary, Secretary	_____	_____	_____
Barry Steinhardt, Treasurer	_____	_____	_____
Glen Peterson, MWD Rep.	_____	_____	_____

2. APPROVAL OF AGENDA

A Moved by Director_____, seconded by Director_____, and_____, that the agenda for the Regular Meeting of March 22, 2011, be approved as presented/amended.

3. PUBLIC COMMENTS

Members of the public may now address the Board of Directors **ON MATTERS NOT APPEARING ON THE AGENDA**, but within the jurisdiction of the Board. No action shall be taken on any matter not appearing on the agenda unless authorized by Subdivision (b) of Government Code Section 54954.2

4. ILLUSTRATIVE AND/OR VERBAL PRESENTATION AGENDA ITEMS

A Legislative and Regulatory Updates

5. CONSENT CALENDAR

A Minutes: Regular Meeting of February 22, 2011. Approve

B List of Demands: March 22, 2011. Approve

C Investment Report for the Month of February 2011. Approve

D Call for Bids - 1235 Foot Backbone Improvements Project, Agoura Hills Pipeline: Proposed bid schedule and Notice Inviting Sealed Bids for the 1235 Foot Backbone Improvement Project, Agoura Hills Pipeline. Approve

6. TREASURER

7. FACILITIES AND OPERATIONS

A 2011 Las Virgenes Dam - Settlement Report

Receive and file the Las Virgenes Dam Settlement Report No. 2474.00.

B Alternative Study to LV-1 and LV-3 Upgrades

Receive and file the Alternative Study for LV-1 and LV-3, LVMWD Report No. 2433.01.

C Twin Lakes Pump Station Expansion Project Acceptance

Ratify Change Order #5 in the amount of \$0 and an extension of the completion date by 212 calendar days; approve the last progress payment in the amount of \$13, 923.93; approve the execution of a Notice of Completion by the Secretary of the Board for and on behalf of the District and have the same recorded; and that in the absence of claims from subcontractors and others, release retention in the amount of \$80,884.61 thirty calendar days after filing the Notice of Completion for the Twin Lakes Pump Station Expansion Project.

D Vehicle Replacement Program Purchase Fiscal Year 2010-11: Award of Bid for Dump Truck

Authorize the General Manager to issue a purchase order for the purchase of a new dump truck to Gibbs International Trucks in the amount of \$97,715.59.

8. RESOURCE CONSERVATION AND PUBLIC OUTREACH

A AMR/AMI Installation Project: Purchase of Meter Covers, Lids and Boxes

Authorize the General Manager to waive formal bidding requirements and to issue a purchase order to Armorcast Products Company in an amount not to exceed \$136,749.05.

B Public Outreach for the Draft Urban Water Management Plan

Provide direction to staff as necessary.

9. INFORMATION ITEMS

A Water Shortage Update - February 2011

10. NON-ACTION ITEMS

A Organization Reports

- (1) MWD
 - a. Representative Report/Agenda(s)
- (2) Other

B Director's Reports on Outside Meetings

C General Manager Reports

D Director's Comments

11. FUTURE AGENDA ITEMS

12. CLOSED SESSION

A Conference with District Counsel - Anticipated Litigation (Government Code Section 54956.9(b) (3) (C): one case):

- 1. Ericka Bryant

B Labor Negotiations (Government Code Section 543957.6):

- 1. Employee Compensation & Benefits

13. OPEN SESSION AND ADJOURNMENT

A Adjournment in memory of Jim Wrigley



LAS VIRGENES MUNICIPAL WATER DISTRICT
4232 Las Virgenes Road, Calabasas, CA 91302

MINUTES
REGULAR MEETING

5:00 PM

February 22, 2011

PLEDGE OF ALLEGIANCE

The Pledge of Allegiance to the Flag was given by President Renger.

1. CALL TO ORDER AND ROLL CALL

A Call to order and roll call.

The meeting was called to order at 5:00 p.m. by President Renger in the District offices. Assistant Deputy Secretary Conklin called the roll. Those answering present were Directors Bowman, Caspary, Peterson, Renger and Steinhardt.

2. APPROVAL OF AGENDA

A Approval of agenda.

General Manager Mundy requested item 9A. Westlake Village Pet Hotel: Waiver of Sewer Connection Fees be heard after 3. Public Comments as a member of the public was present, and may be speaking on the topic.

On a motion by Director Charles Caspary, seconded by Director Lee Renger, the Board of Directors voted 5-0 to Approve the Regular Board Meeting of February 22, 2011, as amended by recommendation of General Manager Mundy.

AYES: Director(s) Bowman , Caspary , Peterson , Renger , Steinhardt

3. PUBLIC COMMENTS

No speaker cards were received from the public.

4. ILLUSTRATIVE AND/OR VERBAL PRESENTATION AGENDA ITEMS

A Legislative and Regulatory Updates House Water and Power Subcommittee Response to Questions

ITEM 5A

General Manager Mundy provided responses to questions posed by Director Bowman, related to an email from Kiel Weaver, House Water and Power Subcommittee, dated February 11, 2011; discussed a proposed Title XVI support letter; and Former Congressman Oberstar's bill regarding jurisdiction of the United States over waters of the United States.

5. CONSENT CALENDAR

On a motion by Director Glen Peterson, seconded by Director Charles Caspary, the Board of Directors voted 5-0 to Approve Consent Calendar 5A-5C as presented in the recommendations.

AYES: Director(s) Bowman , Caspary , Peterson , Renger , Steinhardt

A Minutes: Regular Meeting of January 25, 2011. Approve

B List of Demands: February 22, 2011. Ratify

C Investment Report for the Month of January 2011. Approve

6. TREASURER

Treasurer Steinhardt reported he had reviewed checks and clarified a few expenditures.

7. BOARD OF DIRECTORS

A Statement of Economic Interest Form 700

Provide direction to the General Manager as to whether the Board will file their 2011 Statement of Economic Interest Form 700 electronically, or continue with paper filings.

After a discussion by the Board, President Renger directed staff to continue filing Form 700 via paper.

8. FACILITIES AND OPERATIONS

A Acceptance of Generator and VFD Upgrade at LV-2 Pump Station

Approve a time extension of 120 calendar days to complete the project; approve the execution of a Notice of Completion by the Secretary of the Board for and on behalf of the District and have the same recorded; and approve the final Progress Payment, in the amount of \$250.00 to California Building Evaluation; and that in the absence of claims from subcontractors and others, release retention in the amount of \$15,985.00 thirty calendar days after filing the Notice of Completion for the Generator and VFD Upgrade for LV-2 Pump Station Project.

On a motion by Director Lee Renger, seconded by Director Charles Caspary, the Board of Directors voted 5-0 to Approve the recommendations as presented.

Secretary Caspary requested staff include the street address on the Notice of Completion prior to having the document recorded.

AYES: Director(s) Bowman , Caspary , Peterson , Renger , Steinhardt

B Installation of new Variable Frequency Drive at Cornell Pump Station

Waive the formal bid process; and authorize the General Manager to issue a purchase order in the total amount of \$65,620.00 to PAC NRG, for installation of the VFD and appropriate \$49,585.00 to Job No. 10479

On a motion by Director Glen Peterson, seconded by Director Charles Caspary, the Board of Directors voted 5-0 to Approve the recommendations as presented.

Board of Directors voted 5-0 to Approve the recommendations as presented and to include a statement that this work is an emergency, which needs to be completed as soon as possible to meet regulations.

Director Peterson requested during this process that staff address the gated area containing the propane tank as well.

AYES: Director(s) Bowman , Caspary , Peterson , Renger , Steinhardt

9. RESOURCE CONSERVATION AND PUBLIC OUTREACH

A Westlake Village Pet Hotel: Waiver of Sewer Connection Fees

Discuss and take action on customer request to waive sewer connection fees in the amount of \$28,000.

Director of Resource Conservation and Public Outreach Reyes provided a summary of events, which led to the incorrect calculation and charging of equivalent residential units (ERUs).

The Board discussed with staff, Stan Slaton, manager of the pet hotel and hospital, and Tim Fagan, contractor for the tenant improvement project, the occupancy timing related to when the error was discovered and construction began.

On a motion by Director Joseph Bowman, seconded by Director Lee Renger, the Board of Directors voted 3-2 to Approve waiving of sewer connection fees in the amount of \$28,000 for Barkley Pet Hotel/Hospital; and stated this action does not apply to any future customer use at this same location.

Director Peterson requested staff verify whether 10 or 14 ERUs are being used as the billing basis.

AYES: Director(s) Bowman , Renger , Steinhardt

NOES: Director(s) Caspary , Peterson

10. INFORMATION ITEMS

A Equestrian Trails Tank

B Water Shortage Update - January 2011

11. NON-ACTION ITEMS

A Organization Reports(1) MWDa. Representative Report/Agenda(s); (2)Other

(1) MWD Representative Peterson discussed general business of Metropolitan including Congressman Devin Nunes' proposed legislation related to de-funding of EPA, San Joaquin River Settlement and Delta Pumps; the budget will be two separate documents (1) House/(1) Senate; and relicensing of Hoover Dam.

(2) None.

B Director's Reports on Outside Meetings

Director Steinhardt reported on his attendance at the February 17-18, 2011, Special District Institute Governance Seminar he attended, which included discussions on employee benefits, combining of services with other local cities/agencies, overtime law; financial planning; annual "state of the district" report; and outreach to both the community and media.

Director Caspary reported on his attendance at the Santa Monica Bay Restoration Commission meeting of February 17, 2011, which included discussion of their annual 2010 report including a project listing; and stated Sam Unger, Executive Officer of Regional Water Quality Control Board - Los Angeles office reported on the TMDL process.

Director Bowman reported on his attendance at the ACWA Federal Affairs meeting of February 16, 2011, which included the topics of State Water Resources Control Board proposal on water flow; regulations on water transfers; WRDA earmarks would help Army Corp of Engineers/Bureau of Reclamation; deficit; Chromium 6 and perchlorate.

Director Renger reported on his attendance at the AWA meeting of February 17, 2011 during which testing of discharged waters was discussed, and stated results over limit are punishable even though results read as false-negatives 15% of the time.

C General Manager Reports

General Manager Mundy provided an update regarding general business of the district including display of student art exhibit; Calabasas Feeder shutdown; Conejo/Las Virgenes Future Foundation Student Congress Presentation; Pepperdine public policy class; 60 people attended the quarterly wastewater tour; addition of community calendar to folders per Board request; rescheduling of termination hearing appeal dates; and 1.9" of rain received at Tapia over the weekend - no effect on facilities.

D Director's Comments

Director Bowman read a 10-page statement he wrote entitled "Vietnam syndrome" regarding employee morale, medical and retirement benefits, which was entered into the public record. Director Peterson stated one of the statements made was discussed in Closed Session and therefore not appropriate for Open Session comments.

President Renger discussed a Scientific American article regarding cutting of carbon and methane and impacts on global climate change.

Director Bowman requested President Renger direct General Manager Mundy go to the Board with vacancies prior to filling 4 of the 12 vacant positions, but not have the item on an agenda, which was seconded by Director Steinhardt. President Renger stated the Board hired the General Manager to do a job, let him do it, and during the recent General Manager review the Board said the General Manager did a good job. Director Caspary commented that vacant positions can be discussed with the Board during the March 9, 2011, Action Planning Workshop. Directors Renger, Caspary and Peterson agreed it was appropriate to discuss at the Action Planning Workshop vs. appearing on an agenda. Director Steinhardt withdrew his previous second.

12. FUTURE AGENDA ITEMS

None.

13. CLOSED SESSION

The meeting adjourned to Closed Session at 6:57 p.m.

A Conference with District Counsel - Existing Litigation (Government Code Section 54956.9(a)):

1. Weber v. Las Virgenes Municipal Water District

14. OPEN SESSION AND ADJOURNMENT

The meeting reconvened into Open Session at 7:00 p.m. and the Chair declared the meeting adjourned at 7:01 p.m.

LEE RENGER, President
Board of Directors
Las Virgenes Municipal Water District

ATTEST:

CHARLES CASPARY, Secretary
Board of Directors
Las Virgenes Municipal Water District

(SEAL)

LAS VIRGENES MUNICIPAL WATER DISTRICT

To: BARRY S. STEINHARDT, TREASURER

Payments for Board Meeting of: March 22, 2011

Upon certification by the Treasurer the checks and wire transfers were correct and supporting documents available, it is recommended the following demands on the various funds be approved and payments authorized.

Wells Fargo Bank A/C No. 4806-994448

Checks Nos. 55328 through 55448 were issued in the total amount of

\$ 740,867.88

Payments through wire transfers as follows:

No Wires Transfer

Total payments

\$ 740,867.88

(Reference is hereby made to these demands on file in the District's Check Register and by this reference the same is incorporated herein and made a part hereof.)

**CHECK LISTING FOR BOARD MEETING
03/22/11**

Company Name	Company No.	Check No. 55328 thru 55351 03/08/11	Check No. 55352 thru 55383 03/15/11	Check No. 55384 thru 55448 03/22/11	Total
		Amount	Amount	Amount	Amount
Potable Water Operations	101	42,195.77	43,159.75	26,130.43	111,485.95
Recycled Water Operations	102		624.34		624.34
Sanitation Operations	130	842.71	6,530.89	53,428.00	60,801.60
Potable Water Replacement	301	225.00	1,364.19	9,313.27	10,902.46
Sanitation Replacement	330			2,365.00	2,365.00
Internal Service	701	19,123.72	20,969.71	222,261.71	262,355.14
Joint Venture Operations	751	28,248.57	159,757.31	54,192.36	242,198.24
Joint Venture Construction	752			1,200.45	1,200.45
Joint Venture Replacement	754		323.70	48,611.00	48,934.70
Total Printed		90,635.77	232,729.89	417,502.22	740,867.88
Voided Checks/Payment Stopped:		None			
Total Voids		0.00	0.00	0.00	0.00
Net Total		90,635.77	232,729.89	417,502.22	740,867.88

Batch Number - 207607

Bank Account - 00146807 Cash-General

Payment . . . Number Date	Address Number	Name	Payment Sub Message	Document . . . Ty Number	Key Item Co	Amount	Invoice Number
55328 03/08/11	16480	A.W. CHESTERTON COMPANY	LIFT STATION PUMP SPIRAL TANK	PV 110592	001 00701	784.71	IN002324838/9 23
			FREIGHT	PV 110592	002 00701	58.00	IN002324838/9 23
55329 03/08/11	2339	AGOURA LOCK TECHNOLOGIES	Payment Amount MISC LOCKS & KEYS	PV 110593	001 00701	114.33	77370
			Payment Amount SRV	PV 110556	001 00101	31.93	2150/022011
55330 03/08/11	2869	AT&T	02/20-03/19/1 1 G.PETERSONS 2/23-3/22/11 SRV	PV 110583	001 00701	33.81	1984/022311
			02/23-03/22/1 1 SRV	PV 110585	001 00101	31.17	5388/022311
			02/23-03/22/1 1 SRV	PV 110586	001 00101	32.21	2430/022311
			02/23-03/22/1 1 SRV	PV 110587	001 00101	32.21	0210/022311
55331 03/08/11	9631	AT&T LONG DISTANCE	Payment Amount SRV	PV 110560	001 00701	293.38	806368136/020 411
			01/05-02/04/1 1 SRV	PV 110560	002 00701	5.30	806368136/020 411
			01/05-02/04/1 1 SRV	PV 110560	003 00701	.09	806368136/020 411
			01/05-02/04/1 1 SRV	PV 110560	004 00701	21.78	806368136/020 411
			01/05-02/04/1 1 SRV	PV 110560	005 00701	2.54	806368136/020 411

Batch Number - 207607
Bank Account - 00146807 Cash-General

Payment Number	Payment Date	Address Number	Name	Payment Stub Message	Ty	Document Number	Key	Key	Key	Amount	Invoice Number
Number	Date	Number				Number	Item	Co	Co		Number
55332	03/08/11	17417	CALIFORNIA BUILDING EVALUATION	Payment Amount	PV	110560	006	00701		132.43	806368136/020
				PROG							411
				PMT#5-LV-2 PS							
				GNRTR & VFD							
				10%							
				RETENTION-PMT #5							
				Payment Amount					469.71		
				REPR LCD	PV	110612	001	00701		250.00	10385#5
				KEYPAD							
				Payment Amount					225.00		
55333	03/08/11	11330	DIAL SECURITY	Payment Amount	PV	110590	001	00751		516.90	135862
				2/25 FEDEX DELIVERY (1)					516.90		
				Payment Amount					52.26		
55334	03/08/11	2658	FEDERAL EXPRESS CORP	Payment Amount	PV	110591	001	00701		52.26	7-408-04977
				Payment Amount					52.26		
55335	03/08/11	2661	FLO-SYSTEMS INC	Payment Amount	PV	110594	001	00701		12,709.05	F12177-11R027
				WEMCO TORQUE FLOW PUMP					12,709.05		
				Payment Amount					12,709.05		
55336	03/08/11	17199	GOVERNMENT STAFFING SERVICES, INC.	Payment Amount	PV	110557	001	00701		1,294.80	3213
				2/13/11-S.GON ZALEZ					1,294.80		
				Payment Amount					1,294.80		
				P/E							
				2/13/11-STEVE SCOUTEN							
				Payment Amount					2,589.60		
				MISC OILS-RLV	PV	110598	001	00701		2,885.52	4563854
				Payment Amount					2,885.52		
				MISC OILS-WLK							
				DRUM DEPOSIT	PV	110598	003	00701		3,288.35	4563854
				DRUM DEPOSIT	PV	110598	004	00701		150.00	4563854
				DRUM DEPOSIT	PV	110598	006	00701		100.00	4563854

Batch Number - 207607
Bank Account - 00146807 Cash-General

Payment Number	Payment Date	Alt Payee	Address Number	Name	Payment Stub Message	Document Ty	Document Number	Key Item	Key Co	Amount	Invoice Number
55338	03/08/11	6805	4791	G.P. RESOURCES, INC. P. O. BOX 31001-1235 PASADENA CA 91110-1235	REIMB CSMFO CNF	PV	110589	001	00701	775.38	022511
Payment Amount 6,423.87											
55339	03/08/11	3083	3083	JCI JONES CHEMICALS, INC	SODIUM BISULFITE 38%-4155 GALS	PV	110595	001	00701	5,904.26	497970
Payment Amount 775.38											
55340	03/08/11	2611	2611	JCI JONES CHEMICALS, INC DEPARTMENT LA 23561 PASADENA CA 91185-3561	SODIUM HYPOCHLORITE 12.5%-4990	PV	110596	001	00701	3,035.95	498450
Payment Amount 11,962.78											
55341	03/08/11	3352	3352	LAS VIRGENES MUNICIPAL WATER DISTRICT	RECTIFIER 01/25-02/24/1 1 TWIN LAKES 01/13-02/14/1 1 RECTIFIER 01/26-02/25/1 1	PV	110572	001	00101	36.20	08345/022411
Payment Amount 5,896.15											
55341	03/08/11	3352	3352	LAS VIRGENES MUNICIPAL WATER DISTRICT	WATER 6/11 EQUESTRIAN 12/14/10-02/1 5/11 WALK PLANT 12/16/10-02/1	PV	110561	001	00101	401.56	0909/021611
Payment Amount 159.15											
Payment Amount 108.66											

Batch Number - 207607
Bank Account - 00146807 Cash-General

Payment Number	Date	Address Number	Name	Payment Stub Message	Document Ty	Number	Key Item	Co	Amount	Invoice Number
55342	03/08/11	3164	LEMIEUX & O'NEILL	Payment Amount 02/11 RETAINTER	PV	110570	001	00701	6,000.00	140-999M/0211
55343	03/08/11	2998	NEW TURF CONSTRUCTION	Payment Amount 02/11 PROFESSIONAL SRV	PV	110571	001	00701	6,645.88	140M/0211
55344	03/08/11	6342	POWER MACHINERY CENTER	Payment Amount REPR LPG TANK#202@TAPI A	PV	110566	001	00701	216.28	C94175
55345	03/08/11	17174	ROTH STAFFING COMPANIES, LP	Payment Amount P/E 02/20/11-TEMP SRV	PV	110565	001	00701	489.60	12578207
55346	03/08/11	15522	JOHN STANGLE	Payment Amount REIMB RE:L.C.SEMINA R 2/23/11	PV	110580	001	00701	55.66	022311
55347	03/08/11	9505	TIRE MAN AGOURA	Payment Amount 4 NEW TIRES FOR VEH#840	PV	110581	001	00701	834.13	2005948
55348	03/08/11	3026	VENTURA COUNTY STAR	Payment Amount 52WKS SUBSCP-3/14/1 1-3/13/12	PV	110569	001	00701	201.53	11019360/2011
55349	03/08/11	3025	WATER & SANITATION SRV./VENTURA COUNTY	Payment Amount PURCH WTR 01/18-02/15/1 1	PV	110564	001	00101	16,581.13	1730050006/02 1511
55350	03/08/11	16064	WELLS FARGO FINANCIAL LEASING, INC.	Payment Amount SCNR&PRINTER/ PMT#44-MAR'11	PV	110582	001	00701	591.49	6765552419
55351	03/08/11	8510	WORK BOOT	Payment Amount SAFETY	PV	110568	001	00701	225.00	12129

ITEM 08

Batch Number - 207607
Bank Account - 00146807 Cash-General

Payment . . . Number	Date	Address Number	Name	Payment Strub Message	Document . . . Ty Number	Key Item Co	Amount	Invoice Number
-------------------------	------	-------------------	------	-----------------------	-----------------------------	----------------	--------	-------------------

			WAREHOUSE	SHOES/VOLLMAR				
				.BRETT			225.00	
				Payment Amount			90,635.77	
				Total Amount of Payments Written				
				Total Number of Payments Written			24	

Batch Number - 207693
Bank Account - 00146607 Cash-General

Payment Number	Payment Date	Address Number	Name	Payment Stub Message	Ty	Number	Key	Item	Co	Amount	Invoice Number
55352	03/15/11	17361	ACCURATE FIRST AID SERVICES	REPL FIRST AID CABNT-WLK	PV	110724	001	00701		175.33	2407
				REPL FIRST AID CABNT-RLV	PV	110726	001	00701		244.58	2416
				REPL FIRST AID	PV	110729	001	00701		235.96	2417
				CABNT-TAPIA REPL FIRST AID CABNT-HQ	PV	110730	001	00701		171.76	2418
				REPL FIRST AID CABNT-OPS	PV	110731	001	00701		109.59	2419
				Payment Amount						937.22	
55353	03/15/11	2367	ALL SAFE ELECTRIC, INC.	STM CLN,BAKE,DIP- 30HP GE MTR	PV	110600	001	00701		618.77	R43061
				Payment Amount						618.77	
55354	03/15/11	2398	ARBOR OILFIELD SPECIALTIES	SS RING AS EXAMPLE	PV	110601	001	00701		433.00	32375
				Payment Amount						433.00	
55355	03/15/11	2869	AT&T	SRV 02/25-03/24/1	PV	110708	001	00101		29.92	0192/022511
				Payment Amount						29.92	
55356	03/15/11	7965	B&B PALLET CO.	125YDS WOOD CHIPS 1"	PV	110602	001	00701		1,302.50	106024
				125YDS WOOD CHIPS 1"	PV	110603	001	00701		1,302.50	106025
				125YDS WOOD CHIPS 1"	PV	110604	001	00701		1,302.50	106026
				125YDS WOOD CHIPS 1"	PV	110605	001	00701		1,302.50	106027
				125YDS WOOD CHIPS 1"	PV	110606	001	00701		1,302.50	106028
				125YDS WOOD CHIPS 1"	PV	110608	001	00701		1,302.50	106029
				125YDS WOOD CHIPS 1"	PV	110735	001	00701		1,302.50	106030
				125YDS WOOD CHIPS 1"	PV	110736	001	00701		1,302.50	106031

Batch Number - 207693
Bank Account - 00146807 Cash-General

Payment Number	Payment Date	Address Number	Name	Payment Stub Message	Document Ty	Document Number	Key Item	Key Co	Amount	Invoice Number
55357	03/15/11	5376	CALIFORNIA ELECTRIC SUPPLY		PV	110610	001	00701	387.33	8997-738616
									10,420.00	
Payment Amount										
MISC ELECL PARTS										
					PV	110611	001	00701	37.28	8997-739013
30 LAMPS 24EX-1										
					PV	110614	001	00701	842.57	8997-739017
MISC ELECL PARTS										
Alt Payee 5451 CALIFORNIA ELECTRIC SUPPLY P.O. BOX 14196 ORANGE CA 92863										
Payment Amount										
55358	03/15/11	5405	CALOLYMPIC SAFETY		PV	110615	001	00701	229.43	083892-1
SAFETY ITEMS-GLOVES, GEL										
									1,267.18	
Payment Amount										
55359	03/15/11	2513	CAPCO ANALYTICAL SERVICES		PV	110609	001	00701	396.25	110412-0218
LAB ANALYSIS-FUEL GAS/SULFUR										
									432.76	
Payment Amount										
55360	03/15/11	18118	CHANNEL ISLANDS PUBLIC MANAGEMENT ASSOC.		PV	110733	001	00701	125.00	030911
2011 MEMB-PANIAGUA &HERNANDEZ										
									396.25	
Payment Amount										
55361	03/15/11	4536	CITRUS COLLEGE		PV	110734	001	00701	250.00	030911
WTR.AWARENESS DAY 5 ATTD										
									125.00	
Payment Amount										
55362	03/15/11	2590	DAILY NEWS		PV	110711	001	00701	576.20	0289956000/02
2/11 LEGAL AD (1)-BIDS										
									250.00	
Payment Amount										
55363	03/15/11	8923	ENVIRONMENTAL EXPRESS LTD		PV	110737	001	00701	1,263.00	1000235697
MISC LAB SUPPLIES										
									576.20	
Payment Amount										
55364	03/15/11	2654	FAMCON PIPE		PV	110599	001	00701	383.84	131944
FREIGHT										
									73.37	
Payment Amount										
									1,336.37	
MISC ELL, 90-INVENTORY										

Batch Number - 207693
Bank Account - 00146807 Cash-General

Payment Number	Payment Date	Address Number	Name	Payment Stub Message	Ty	Document Number	Key Item	Key Co	Amount	Invoice Number
55365	03/15/11	2658	FEDERAL EXPRESS CORP	Payment Amount 3/4 FEDEX DELIVERY (2)	PV	110732	001	00701	94.16	7-415-70577
				Payment Amount					383.84	
55366	03/15/11	2672	FRUIT GROWERS LABORATORY, INC.	LAB ANALYSIS	PV	110617	001	00701	148.50	100726A
				Payment Amount					94.16	
55367	03/15/11	6770	G.I. INDUSTRIES	LAB ANALYSIS	PV	110618	001	00701	74.25	101374A
				LAB ANALYSIS	PV	110619	001	00701	74.25	101622A
				Payment Amount					297.00	
				1/27-2/15 10YD ROLLOFF-SHOP	PV	110621	001	00701	529.60	2539958-0283-7
			Alt Payee 6771 G.I. INDUSTRIES P. O. BOX 541065 LOS ANGELES CA 90054-1065	Payment Amount					529.60	
55368	03/15/11	2683	GBH COMMUNICATION S, INC	WIRELESS HEADSET SYSTM	PV	110738	001	00701	711.19	SI461087
				Payment Amount					724.34	
55369	03/15/11	18115	GEXPRO	FREIGHT	PV	110738	003	00701	13.15	SI461087
				Payment Amount					1,364.19	
				150 AMP BREAKER	PV	110620	001	00701	1,364.19	170-301014
				Payment Amount					1,364.19	
55370	03/15/11	17199	GOVERNMENT STAFFING SERVICES, INC.	P/E	PV	110706	001	00701	2,071.68	3236
				02/20-02/27/1 1-S.GONZALEZ						
				Payment Amount					2,330.64	
				P/E 02/20-02/27/1 1-S.SCOUTEN	PV	110707	001	00701	2,330.64	3238
				Payment Amount					4,402.32	
55371	03/15/11	2701	GRAINGER, INC.	EXHAUST FAN/DOOR CLOSER	PV	110622	001	00701	1,183.82	9457606243
			Alt Payee 5453 GRAINGER, INC. DEPT 805178142 PALATINE IL 60038-0001	Payment Amount					1,183.82	

Batch Number - 207693
Bank Account - 00146807 Cash-General

Payment Number	Payment Date	Address Number	Name	Payment Stub Message	Ty	Document Number	Key Item	Key Co	Amount	Invoice Number
55372	03/15/11	3083	JCI JONES CHEMICALS, INC	SODIUM HYPOCHLORITE 12.5%-4954	PV	110740	001	00701	3,014.05	499005
			JCI JONES CHEMICALS, INC	SODIUM HYPOCHLORITE 12.5%-4976	PV	110783	001	00701	3,027.43	499253
			Alt Payee 13647 JCI JONES CHEMICALS, INC							
			DEPARTMENT LA 23561							
			PASADENA CA 91185-3561							
55373	03/15/11	4783	LAWSON PRODUCTS, INC	Payment Amount STOCK-RANCHO SHOP	PV	110739	001	00701	815.43	0186114
				Payment Amount FREIGHT	PV	110739	002	00701	31.28	0186114
55374	03/15/11	2798	LOS ANGELES COUNTY ASSESSOR	Payment Amount 1/28 ASSESSOR MAPS (12)	PV	110624	001	00701	48.00	11ASRE128
55375	03/15/11	2610	LOS ANGELES COUNTY DEPT. OF PUBLIC WORKS	Payment Amount 12/20&21 PRMT CONSTR INSPECTN	PV	110712	001	00754	323.70	RE-PW-1102140 7758
55376	03/15/11	2302	OFFICE DEPOT	Payment Amount OFFICE/COFFEE SUPPLIES	PV	110625	001	00701	604.31	550915294001
55377	03/15/11	17174	ROTH STAFFING COMPANIES, LP	Payment Amount P/E 02/27/11-TEMP SRV	PV	110710	001	00701	367.20	12580166
55378	03/15/11	6940	SECTRAN SECURITY, INC.	Payment Amount 03/11 COURIER SRV	PV	110767	001	00701	286.65	11030457
55379	03/15/11	2957	SOUTHERN CALIFORNIA EDISON	Payment Amount CONDUIT 01/20-02/22	PV	110628	001	00101	176.23	1313-55/02221 1
				Payment Amount LATIGO CYN 01/20-02/18	PV	110629	001	00101	21.11	4368-30/02181 1
				Payment Amount SADDLETREE	PV	110630	001	00101	488.34	4368-32/02121

Batch Number - 207693
Bank Account - 00146807 Cash-General

Payment Number	Payment Date	Address Number	Name	Payment Stub Message	Ty	Document Number	Key Item	Key Co	Amount	Invoice Number
	01/14-02/12				PV	110631	001	00101	20.38	4368-34/02171
	RECTIFIER									
	01/20-02/17				PV	110632	001	00701	255.58	4368-35/02151
	HQ/OPNS									
	01/18-02/15				PV	110634	001	00701	155.11	4368-36/02151
	HQ/OPNS									
	01/18-02/15				PV	110635	001	00101	25.08	4368-38/02221
	CONDUIT									
	01/20-02/22				PV	110637	001	00101	23.30	4368-39/02221
	RECTIFIER									
	01/21-02/22				PV	110638	001	00101	21.07	4368-40/02031
	WOOLSEY TANK									
	01/06-02/03				PV	110640	001	00101	23.30	4368-41/02281
	BOX CYN									
	01/27-02/28				PV	110641	001	00130	2,946.17	4368-42/02161
	L/S#2 SEWER									
	01/18-02/16				PV	110642	001	00101	4,666.94	4368-44/03011
	WARNER P/S									
	01/28-03/01				PV	110643	001	00101	70.13	4368-47/03021
	SEMINOLE									
	01/31-03/02				PV	110645	001	00101	651.42	4368-49/03011
	CORNELL									
	12/29/10-03/0									
	111									
	WLK PLNT				PV	110646	001	00101	1,268.98	4368-52/02111
	01/13-02/11									
	MALIBU SYPHN				PV	110647	001	00751	22.57	4368-53/02151
	01/15-02/15									
	JBR P/S				PV	110648	001	00101	160.66	4368-54/02231
	01/24-02/23									
	STUNT RD				PV	110649	001	00101	3,054.77	4368-55/02091
	01/11-02/09									
	TAPIA PLNT				PV	110650	001	00751	73,992.45	4368-56/03011
	01/28-03/01									
	ARGOS VALVE				PV	110651	001	00101	21.11	4368-57/02181
	01/20-02/18									
	3 SPNG				PV	110652	001	00101	643.17	4368-58/02101
	01/13-02/10									
	KIMBERLY				PV	110653	001	00101	661.44	4368-59/02231
	01/24-02/23									
	RLV FARM				PV	110654	001	00751	5,087.23	4368-60/02151

Batch Number - 207693
Bank Account - 00145807 Cash-General

Payment Number	Date	Address Number	Name	Payment Stub Message	Ty	Document . . . Number	Key Itrm Co	Amount	Invoice Number
				01/17-02/15					1
			CENTRAL CYN		PV	110655	001 00751	150.47	4368-61/02151
			01/17-02/15						1
			NO.CYN		PD	110656	001 00751	1,850.20-	4368-62/ 011711
			IRRGTN#2						
			10/15/10-01/1						
			7						
			NO. CYN		PV	110658	001 00751	33.64	4368-62/02151
			IRRGTN#2						1
			01/17-02/15						
			DARDENNE		PV	110659	001 00101	667.22	4368-64/02171
			01/19-02/17						1
			MULWOOD		PV	110660	001 00101	2,195.03	4368-65/02171
			01/18-02/17						1
			EQUESTRIAN		PV	110661	001 00101	45.32	4368-67/02121
			01/14-02/12						1
			MTN GATE		PV	110662	001 00101	745.97	6316-49/02161
			01/18-02/16						1
			MORRISON		PV	110663	001 00101	27.45	8383-31/02241
			01/25-02/24						1
			AGOURA		PV	110664	001 00101	571.56	2515-69/02231
			01/24-02/23						1
			WLK PR STN		PV	110670	001 00101	25.80	2683-53/03011
			01/29-03/01						1
			McCOY P/S		PV	110671	001 00101	5,368.61	2782-42/02171
			01/19-02/17						1
			CLBS LV-2		PV	110672	001 00101	261.16	3395-85/03011
			01/28-03/01						1
			WLK P/S		PV	110673	001 00101	733.32	3977-87/03011
			01/28-03/01						1
			OPNS BLDG		PV	110674	001 00701	1,695.61	3977-89/02221
			01/21-02/22						1
			L/S#1 SEWER		PV	110675	001 00130	3,562.88	3977-91/02181
			01/20-02/18						1
			SEMINOLE		PV	110676	001 00101	7,913.79	7025-53/02151
			01/17-02/15						1
			COLD CYN		PV	110677	001 00101	3,863.43	7651-90/02161
			01/19-02/16						1
			JED SMITH		PV	110678	001 00101	3,852.61	6723-62/02171
			01/20-02/17						1
			RLV COMPOST		PV	110679	001 00751	23,666.84	5165-46/02231

Batch Number - 207693
Bank Account - 00146807 Cash-General

Payment Number	Payment Date	Address Number	Name	Payment Stub Message	TY	Document Number	Key Item	Key Co	Amount	Invoice Number
				01/24-02/23						
				FOXFIELD WELL	PV	110680	001	00751	128.05	7717-31/02121
				01/14-02/12						
				ODOR CNTRL	PV	110681	001	00130	21.84	4996-99/02161
				EQUIP						
				01/17-02/16						
				OAKRIDGE	PV	110682	001	00101	584.01	2165-89/02161
				01/18-02/16						
				RLV CNTRL	PV	110683	001	00751	182.18	5716-44/02221
				BLDG						
				01/21-02/22						
				PK BELMONT	PV	110684	001	00701	47.98	9284-79/02151
				01/17-02/15						
				HQ/HVAC	PV	110685	001	00701	605.40	6149-28/02151
				01/18-02/15						
				HQ CHILLER	PV	110686	001	00701	1,462.26	6534-73/02151
				01/18-02/15						
				HQ BLDG	PV	110687	001	00701	3,521.56	6634-32/02151
				01/18-02/15						
				RECTIFIER	PV	110688	001	00101	20.38	2219-92/02151
				01/18-02/15						
				005 DISCHRG	PV	110689	001	00751	22.94	5375-87/02161
				01/19-2/16						
				MULWOOD PR	PV	110690	001	00101	23.60	9781-34/02161
				01/17-02/16						
				MORRISON	PV	110691	001	00751	164.76	7173-76/02241
				01/25-02/24						
				UPR TWIN	PV	110692	001	00101	26.03	5155-72/03021
				LAKES						
				01/29-03/02						
				UPR TWIN	PV	110693	001	00101	609.39	5155-97/03021
				LAKES						
				01/28-03/02						
				UPR/PKWY CLBS	PV	110694	001	00101	11.53	9819-04/02171
				01/18-02/17/1						
				1						
				UPR/PKWY CLBS	PV	110694	002	00101	11.53	9819-04/02171
				01/18-02/17/1						
				1						
				PKWY CLBS	PV	110695	001	00102	612.81	9819-53/02171
				01/18-02/17						
				1						

Batch Number - 207693
Bank Account - 00146807 Cash-General

Payment Number	Payment Date	Address Number	Name	Payment Stub Message	Ty	Document Number	Key	Item	Co	Amount	Invoice Number
				UPR/LWR OAKS	PV	110696	001	00101		37.21	9819-99/02171
				01/18-02/17							1
				LWR OAKS TNK	PV	110697	001	00101		29.87	3747-36/02171
				01/19-02/17							1
				RW P/S	PV	110698	001	00751		34,826.76	4500-42/02161
				01/18-02/16							1
				RANCHVIEW	PV	110699	001	00101		367.86	8169*85/02221
				01/21-02/22							1
				TAPIA FAC	PV	110700	001	00751		2,314.18	8839-77/03011
				CHRG							1
				02/01-03/02							
				UPR/LWR OAKS	PV	110702	001	00101		2,099.72	8169-54/02171
				01/18-02/17							1
				Payment Amount					195,718.90		
55380	03/15/11	2964	STATE BOARD OF EQUALIZATION	PREPMT2-FEB11	PV	110714	001	00701		2,049.00	97-817885/FEB
				06 USETAX							11PRE
				97-817885							
				Payment Amount					2,049.00		
55381	03/15/11	2964	STATE BOARD OF EQUALIZATION	06 USETAX	PV	110715	001	00701		396.00	97325940/06AM
				AMEND							END
				97325940 DELL							
				Payment Amount					396.00		
55382	03/15/11	2964	STATE BOARD OF EQUALIZATION	04 USETAX	PV	110716	001	00701		116.00	97325940/04AM
				AMEND							END
				97325940 DELL							
				Payment Amount					116.00		
55383	03/15/11	3026	VENTURA COUNTY STAR	ADS:COMPOST	PV	110709	001	00751		130.00	1029241
				2/5-2/8/11							
				Payment Amount					130.00		
				Total Amount of Payments Written					232,729.89		
				Total Number of Payments Written					32		

Batch Number - 207701
Bank Account - 00146807 Cash-General

Payment Number	Payment Date	Address Number	Name	Payment Stub Message	Document	Key	Amount	Invoice Number
55384	03/22/11	16051	ACCURATE TELECOM INC.	12/10&14.1/11 SRV CALLS	PV	110749 001 00101	1,650.00	7048
				Payment Amount		1,650.00		
55385	03/22/11	17077	AECOM USA, INC.	1/8-2/11 BNR PROCESS FOLLOW-UP	PV	110665 001 00701	1,657.34	37092310
				1/8-2/11 EQUESTRIAN	PV	110666 001 00701	2,831.31	37092295
				TNK INSPEC	PV	110667 001 00701	4,012.33	37093391
				1/22-2/18 ALT STUDY-LV 1&3	PV	110667 001 00701	4,012.33	37093391
				Payment Amount		8,500.98		
55386	03/22/11	9271	ARMORCAST PRODUCTS CO.	MISC INVENTORY PARTS	PV	110747 001 00701	6,214.73	0126717-IN
				Payment Amount		6,214.73		
55387	03/22/11	17311	AUMA ACTUATORS, INC.	VALVE ACTUATOR	PV	110805 001 00701	4,971.68	6205088
				SARO 7.5-26B	PV	110805 002 00701	63.17	6205088
				FREIGHT	PV	110761 001 00701	34.13	1226161-0001-01
				Payment Amount		5,034.85		
55388	03/22/11	2417	B&R TOOL & SUPPLY CO	SCRUB BRUSH W/PLASTIC HANDLE	PV	110761 002 00701	6.32	1226161-0001-01
				FREIGHT	PV	110761 001 00101	1,276.55	9997112
				Payment Amount		40.45		
55389	03/22/11	18120	B-REEL FILMS	RFND DEP-CLOSING	PV	110787 001 00101	1,276.55	
				BL	PV	110758 001 00701	1,803.97	BPI077018
				Payment Amount		1,276.55		
55390	03/22/11	15635	BRENNTAG PACIFIC, INC.	AMMONIUM HYDROXIDE	PV	110758 002 00701	1,600.00	BPI077018
				AMMONIUM HYDROXIDE	PV	110759 001 00751	1,550.00	BPI127701
				CR-CONTAINER RETURN	PV	110760 001 00701	2,664.81	BPI077886
				AMMONIUM HYDROXIDE	PV	110760 002 00701	2,400.00	BPI077886

Batch Number - 207701
Bank Account - 00146807 Cash-General

Payment Number	Payment Date	Address Number	Name	Payment Stub Message	Ty	Document Number	Key	Item	Co	Amount	Invoice Number
55391	03/22/11	18119	WILLIAM BROWN	Payment Amount	PV	110784	001	00101		149.31	690424
				RFND							
				OVERPMT-CLOSE							
				D AC							
				Payment Amount						6,918.78	
55392	03/22/11	5405	CALOLYMPIC SAFETY	Payment Amount	PV	110762	001	00701		845.83	084543-1
				SAFETY							
				ITEMS-GLOVES							
				MISC SAFETY							
				ITEMS							
				Payment Amount						1,232.82	084543
55393	03/22/11	3074	CENTURY MAINTENANCE COMPANY	Payment Amount	PV	110815	001	00701		3,860.00	25651
				2/11							
				JANITORIAL							
				SRV-BLDG 8							
				2/11						140.00	25651
				JANITORIAL							
				SRV-WLK							
				2/11						1,450.00	25651
				JANITORIAL							
				SRV-RLV							
				2/5 EXTRA						200.00	25677
				CLEANING-BLDG							
				1							
				Payment Amount						5,650.00	
55394	03/22/11	2536	CITY OF LOS ANGELES	Payment Amount	PV	110750	001	00130		21,791.00	74WP111000922
				SWG CHG-5TH							
				PMT FY10/11							/5
				CAP							
				SWG CHG-5TH						31,637.00	74WP111000923
				PMT FY10/11							/5
				O&M							
				Payment Amount						53,428.00	
55395	03/22/11	8213	DATAMATIC, LTD.	Payment Amount	PV	110764	001	00701		191.70	CA-0000020443
				4/11 MTR READ							
				SYST MAINT							
				4/11 MTR READ						161.64	CA-0000020460
				SYST							
				MAINT-ADD'L							
				Alt Payee							
				16479							
				ALLIED AFFILIATED FUNDING, LP							
				C/O DATAMATIC, LTD.							
				P. O. BOX 676649							
				DALLAS TX 75267-6649							
				Payment Amount						353.34	

Batch Number - 207701
Bank Account - 00146807 Cash-General

Payment Number	Payment Date	Address Number	Name	Payment Stub Message	Document . . .	Key	Amount	Invoice Number
55396	03/22/11	2834	DIAL COMMUNICATION S SERVICE	3/11 RADIO MAINTENANCE	PV 110817	001 00701	1,537.00	31198
				Payment Amount			1,537.00	
55397	03/22/11	11330	DIAL SECURITY	3/11 SECURITY SRV-HQ.LBY GATES	PV 110809	001 00701	278.00	136659
				3/11 SECURITY SRV-TAPIA	PV 110810	001 00701	45.00	136660
				3/11 SECURITY SRV-RLV	PV 110811	001 00701	80.00	136661
				3/11 SECURITY SRV-RLV FARM	PV 110812	001 00701	35.00	136662
				3/11 SECURITY SRV-WLK	PV 110813	001 00701	70.00	136663
				3/11 SECURITY SRV-WLK P/S	PV 110814	001 00701	35.00	136664
				Payment Amount			543.00	
55398	03/22/11	16303	DUDEK	1/1-28 CONSTR SUP-24"RW P/L	PV 110766	001 00701	1,200.45	20110029
				Payment Amount			1,200.45	
55399	03/22/11	18111	ELECSYS INTERNATIONAL CORPORATION	4/11 MAINT 6 RADIX	PV 110789	001 00701	261.00	094405
				Payment Amount			261.00	
55400	03/22/11	14723	EMPLOYMENT DEVELOPMENT DEPARTMENT	CASE FILE-3460485	PV 110627	001 00701	10.00	3460485
				Payment Amount			10.00	
55401	03/22/11	2654	FAMCON PIPE	MISC INVENTORY PARTS	PV 110633	001 00701	6,489.44	132045
				BALL VALVE, 1-1/2" W/HANDLE	PV 110636	001 00701	330.00	132078
				PRESSURE REGULATORS	PV 110639	001 00701	8,323.44	132104
				MISC STORAGE PARTS	PV 110668	001 00701	422.55	132047
				Payment Amount			15,565.43	
55402	03/22/11	2698	GOLDEN STATE	3/11 ELEVATOR	PV 110818	001 00701	283.50	00763168

ITEM 5B

Batch Number - 207701
Bank Account - 00146807 Cash-General

Payment Number	Payment Date	Address Number	Name	Payment Stub Message	Ty	Document Number	Key Ltm Co	Amount	Invoice Number
			ELEVATOR	MAINT					
55403	03/22/11	2700	GRAFFITI PREVENTION SYSTEMS	Payment Amount 3/11 GRAFFITI RMVL-OLD TOPANGA	PV	110807	001 00101	283.50 75.00	2945
55404	03/22/11	7421	HAMNER, JEWELL AND ASSOCIATES	Payment Amount TITLE REPORT-FEB 11 SRV	PV	110788	001 00330	75.00 2,365.00	5172
55405	03/22/11	4525	HARRINGTON INDUSTRIAL PLASTICS INC.	Payment Amount BALL VALVE, 1/2" PVC, SCH80 MISC INVENTORY PARTS COUPLING, REDUCING,3/4" X 1/2" 3/4" FCxMPT, 3/4" MCxHB PVDF 2" RIGID PIPE CLAMP FREIGHT	PV	110644	001 00701	156.24 1,268.66 233.22 844.80 132.80 7.98	00575710 00575689 00575850 00575812 00575851 00575851
			Alt Payee 7132 HARRINGTON INDUSTRIAL PLASTICS LLC P. O. BOX 5128 14480 YORBA AVENUE CHINO CA 91708-5128						
55406	03/22/11	18121	HARRI HOLLANDER	Payment Amount RFND OVERPMT-CLOSE D.AC	PV	110785	001 00101	2,643.70 360.96	1150230
55407	03/22/11	8992	HOUSE SANITARY SUPPLY	Payment Amount JANITORIAL SUPPLIES	PV	110792	001 00701	2,530.77	051992
55408	03/22/11	17448	INTERNATIONAL METAL HOSE	Payment Amount STAINLESS STEEL TUBING,	PV	110748	001 00701	2,975.00	102947

Batch Number - 207701
Bank Account - 00146807 Cash-General

Payment Number	Payment Date	Address Number	Name	Payment Stub Message	Ty	Document Number	Key	Amount	Invoice Number
Number	Date	Number	COMPANY	Message		Number	Key	Amount	Number
							Item Co		
55409	03/22/11	2736	IRON MOUNTAIN RECORDS MANAGEMENT	STAINLESS STEEL TUBING, Payment Amount	PV	110748	002 00701	111.34	102947
				3/11 OFF-SITE STORAGE	PV	110806	001 00701	559.44	DEV1573
				Payment Amount				3,086.34	
55410	03/22/11	2776	LAB SAFETY SUPPLY INC.	FLASHLIGHT, MINI MAG	PV	110796	001 00701	152.11	1016939327
				FREIGHT	PV	110796	002 00701	10.96	1016939327
				Payment Amount				559.44	
				LAB SAFETY SUPPLY 6475 LAB SAFETY SUPPLY P O BOX 5004 JANESVILLE WI 53547-5004					
55411	03/22/11	18122	KATHRYN LAWRENCE	RFND OVERPMT-CLOSE D AC	PV	110786	001 00101	28.01	3070878
				Payment Amount				163.07	
55412	03/22/11	4783	LAWSON PRODUCTS, INC	TAPIA BIN PRTS.UTILITY BAG#869	PV	110669	001 00701	926.99	0203045
				FREIGHT	PV	110669	002 00701	27.27	0203045
				Payment Amount				954.26	
55413	03/22/11	2610	LOS ANGELES COUNTY DEPT. OF PUBLIC WORKS	1/11 SERVICE CUTS (3)	PV	110757	001 00101	254.00	IN110000757
				1/11 SERVICE CUTS (3)	PV	110757	002 00101	126.00	IN110000757
				Payment Amount				380.00	
55414	03/22/11	17639	MARTIN TEITELBAUM CONSTRUCTION	REFD DEPOSIT ON CLOSED A/C	PV	110775	001 00101	1,307.55	9997092
				INTEREST	PV	110776	001 00101	.73	9997092/INT
				Payment Amount				1,308.28	
55415	03/22/11	14322	MILES CHEMICAL COMPANY, INC	03/01/11 BULK FERRIC CHLORIDE	PV	110774	001 00701	6,790.61	145699
				Payment Amount				6,790.61	

Batch Number - 207701
Bank Account - 00146807 Cash-General

Payment Number	Payment Date	Address Number	Name	Payment Sub Message	Ty	Number	Item	Key	Co	Amount	Invoice Number
55416	03/22/11	2899	MOTION INDUSTRIES, INC.	MISC TAPIA MAINT SUPPL	PV	110779	001	00701		792.35	CA22-535441
				TRI-POWER BELTS (3)	PV	110780	001	00701		128.91	CA22-535510
				TRI-POWER BELT (1)	PV	110781	001	00701		48.92	CA22-535565
			All Payee 10317 MOTION INDUSTRIES INC. FILE 749376 LOS ANGELES CA 90074								
				CUTTING WHEEL, 14" X 20MM	PV	110742	001	00701		146.85	50781121
55417	03/22/11	16926	MSC INDUSTRIAL SUPPLY CO.	FREIGHT	PV	110742	002	00701		18.25	50781121
			All Payee 17054 MSC INDUSTRIAL SUPPLY CO. DEPT CH 0075 PALATINE IL 60055-0075								
				LAB ANALYSIS	PV	110721	001	00701		300.00	L0049913
55418	03/22/11	2836	MWH LABORATORIES	MISC LAB ANALYSIS	PV	110801	001	00701		1,550.00	L0050622
				ADAPTER, SCOTT 742 SERIES	PV	110741	001	00701		441.72	P291160701016
55419	03/22/11	8389	NORTHERN SAFETY CO., INC.	ANIN'L MESSAGE SRV@HQ BLDG	PV	110713	001	00701		828.00	71498
				SAFETY SHOES/REED,KE N	PV	110720	001	00701		151.53	15643
55420	03/22/11	2863	ON HOLD MARKETING SYSTEMS	NUT 5/8"XNUT 3/4 FINISHED HEX	PV	110743	001	00701		658.50	338984-00
				OUTBACK FOOTWEAR	PV	110743	003	00701		32.98	338984-00

Batch Number - 207701
Bank Account - 00146807 Cash-General

Payment Number	Payment Date	Address Number	Name	Payment Stub Message	Ty	Document Number	Key	Item	Co	Amount	Invoice Number
				BOLT, 5/8" X 3", HEX HEAD 316	PV	110802	001	00701		373.15	339192-00
				FREIGHT	PV	110802	002	00701		29.59	339192-00
				Payment Amount						1,094.22	
55423	03/22/11	7384	PACIFIC TEK	3000 PSI WTR JET SYST	PV	110703	001	00701		5,300.94	7660
				Payment Amount						5,300.94	
55424	03/22/11	18084	PHOENIX CIVIL ENGINEERING, INC.	02/11 ENGINEER SRV	PV	110723	001	00701		1,690.00	MLVM12100102
				Payment Amount						1,690.00	
55425	03/22/11	8484	PRAXAIR DISTRIBUTION, INC	02/11 CYLINDER RNTL	PV	110722	001	00701		49.20	38902494
				Payment Amount						49.20	
				Alt Payee							
				8898 PRAXAIR DISTRIBUTION INC. DEPT. LA 21511 PASADENA CA 91185-1511							
55426	03/22/11	18123	PRIME RENTALS	REFD O/P ON CLOSED A/C	PV	110777	001	00101		81.85	680716
				Payment Amount						49.20	
55427	03/22/11	2585	PURETEC	03/11-8" D.I.RNTL	PV	110770	001	00701		20.37	1065797
				Payment Amount						81.85	
				02/11 TANK RNTL	PV	110771	001	00701		261.68	1061540
				03/11-14" D. I. RNTL	PV	110772	001	00701		90.63	1065648
				03/11 TANK EXCHANGE SRV	PV	110773	001	00701		176.44	1067133
				Payment Amount						549.12	
55428	03/22/11	15904	REED ELECTRIC & FIELD SERVICE	REPR PARTS KIT SUMERSIBLE PUMP	PV	110704	001	00701		7,371.25	NIL02-11-22
				Payment Amount						7,371.25	
55429	03/22/11	14988	REXEL ELECTRICAL & DATACOM PRODUCTS		PV	110607	001	00701		33.72	801220851
				Payment Amount						7,371.25	

Batch Number - 207701
Bank Account - 00146807 Cash-General

Payment Number	Payment Date	Alt Payee	Address Number	Name	Payment Stub Message	TY	Document Number	Key	Amount	Invoice Number
Number	Date	Payee	Number				Number	Item Co		
55430	03/22/11	17401	7906	REXEL ELECTRICAL & DATACOM PRODUCTS DEPT. LA 21553 PASADENA CA 91185-1553	Payment Amount CARTRIDGE-TON ER/VAR COLORS	PV	110744	001 00701	33.72 2,232.75	6943
55431	03/22/11	6575		S & H COMPUTER RESOURCES	Payment Amount 100 LBS PASTURE SEED MIX	PV	110793	001 00701	3,015.27 330.58	6947
55432	03/22/11	16505		S&S SEEDS INC.	Payment Amount ANN'L SOFTWARE ASSURANCE	PV	110803	001 00751	26,308.22	US-PSI-150333
55433	03/22/11	16385		SOFTWAREONE	Payment Amount 8" PLUG VALVE PNEUMATICALLY INC.	PV	110745	001 00701	9,100.47	2628
55434	03/22/11	2977		SOUTHWEST VALVE & EQUIPMENT, INC.	Payment Amount CENTRATE AUTO TRANSFER SWITCH	PV	110841	001 00701	46,921.00	20484
55435	03/22/11	15427		TAFT ELECTRIC	Payment Amount INSTLD OPERATORS-RLV GATES	PV	110798	001 00701	7,000.00	74799
55436	03/22/11	18127		THE GATEKEEPER	Payment Amount RFND OVERPMT-OPEN ACCT	PV	110808	001 00101	7,000.00 686.06	752495
55437	03/22/11	18124		TRIUNFO TRUST	Payment Amount REFD O/P ON CLOSED A/C	PV	110778	001 00101	1,858.36	180422
55438	03/22/11	7737		RONALD TUTOR INSURANCE SERVICES, LLC	Payment Amount INS PREM FY10-11/3RD QTRLY PMT	PV	110717	001 00701	1,858.36 95,000.04	703325

Las Virgenes Municipal Water
 A/P Auto Payment Register

Batch Number - 207701
 Bank Account - 00146807 Cash-General

Payment Number	Payment Date	Address Number	Name	Payment Stub Message	TY	Document Number	Key Item	Co	Amount	Invoice Number
				INS PREM	PV	110717	002	00701	4,013.78	703325
				FY10-11/3RD						
				QTRLY PMT						
				INS PREM	PV	110717	003	00701	7,346.18	703325
				FY10-11/3RD						
				QTRLY PMT						
				INS PREM	PV	110718	001	00701	53,074.00	703326
				FY10-11/3RD						
				QTRLY						
				Payment Amount					159,434.00	
55439	03/22/11	3006	UNDERGROUND SERVICE ALERT	02/11 NEW TICKETS	PV	110727	001	00701	193.50	220110387
				Payment Amount					193.50	
55440	03/22/11	15807	UPS PROTECTION	APC SMART UPS 2250 WATTS	PV	110769	001	00701	547.65	110297
				SHIPPING & HANDLING	PV	110769	002	00701	45.00	110297
				Payment Amount					592.65	
55441	03/22/11	3035	VWR SCIENTIFIC	PHOSPHATE BUFFER	PV	110799	001	00701	109.38	44892526
				DILUTION VIA						
				FREIGHT	PV	110799	002	00701	20.42	44892526
				MISC LAB SUPPL	PV	110800	001	00701	434.82	44921825
				FREIGHT	PV	110800	004	00701	10.83	44921825
				Alt Payee 3216 VWR INTERNATIONAL, INC P. O. BOX 31001-1257 PASADENA CA 91110-1257						
				Payment Amount					575.45	
55442	03/22/11	3037	WAITE BROS. PLUMBING	PLUMBING REPR @TAPIA	PV	110719	001	00701	142.00	36051
				Payment Amount					142.00	
55443	03/22/11	3047	WESCO DISTRIBUTION, INC.	ELECTRICAL MAINT	PV	110728	001	00701	224.68	899311
				Alt Payee 6443 WESCO DISTRIBUTION, INC PO BOX 31001-0465 PASADENA CA 91110-0465						
				Payment Amount					224.68	

Batch Number - 207701
Bank Account - 00146807 Cash-General

Payment Number	Payment Date	Address Number	Name	Payment Stub Message	Ty	Document Number	Key Item	Co	Amount	Invoice Number
55444	03/22/11	3049	WEST COAST WATER SERVICE, INC	03/11 WTR TRMT FOR BOILER	PV	110782	001	00701	278.00	20599
55445	03/22/11	3507	WORDLAND	Payment Amount 4/1/11-3/31/11 2 PRINTER MAINT	PV	110794	001	00701	3,300.00	55374
55446	03/22/11	16623	WTS, INC.	Payment Amount 04/11 DIASTER RECOVERY FEES	PV	110725	001	00701	2,874.00	C0303/001-34
55447	03/22/11	3067	XEROX CORPORATION	Payment Amount WCP123-WLK/PM T#51-FEB'11	PV	110751	001	00701	168.54	053607041
				4590CP-1ST FL/PMT#43-FEB '11	PV	110752	001	00701	725.39	053607042
				4590CP-2ND FL/PMT#43-FEB '11	PV	110753	001	00701	667.83	053607043
				PT-OPNS/PMT#4 -FEB'11	PV	110754	001	00701	201.48	053607046
				WCP123-RLV/PM T#51-FEB'11	PV	110755	001	00701	253.57	053607183
55448	03/22/11	14731	1-800-CONFERENCE(R)	Payment Amount 2/15 CONF CALL-IRWMP MTG-JD	PV	110626	001	00701	132.88	1200730483
									2,016.81	
									132.88	
									417,502.22	
Total Amount of Payments Written										65
Total Number of Payments Written										

Date: March 14, 2011
 To: John R. Mundy, General Manager
 From: Finance and Administration Department
 Subject: Investment Report for the Month of February 2011

Summary of Investments

Investments Maturing Within Six Months:

Disc./Cpn Rate	Yield To Maturity	Investment Type	Date Invested	Date Matures	Book Value	Par Value	Market Value	Market Value Source
3.000%	1.751%	CalRANS-Municipal Bond	11/23/10	06/28/11	1,007,350	1,000,000	1,006,620	Custodian
		Sub-Total			1,007,350	1,000,000	1,006,620	

Investments Maturing After Six Months:

2.100%	2.100%	FHLB-Bullet	01/23/09	01/23/12	1,000,000	1,000,000	1,015,110	Custodian
2.250%	2.254%	US Bancorp-TLGP Bond	03/13/09	03/13/12	999,880	1,000,000	1,018,320	Custodian
2.375%	2.375%	FNMA-Callable Coupon	03/23/09	03/23/12	1,000,000	1,000,000	1,000,930	Custodian
2.400%	2.400%	FHLB-Callable Coupon	06/15/09	08/15/12	1,000,000	1,000,000	1,026,410	Custodian
4.760%	3.573%	CTCGEN-Municipal Bond	09/01/09	08/01/13	1,043,000	1,000,000	1,043,940	Custodian
3.000%	2.950%	LAUSD-Municipal Bond	10/15/09	07/01/13	1,001,710	1,000,000	1,016,670	Custodian
1.25% & Up	2.221%	FHLB-Callable Coupon	03/16/10	09/16/13	1,000,000	1,000,000	1,000,290	Custodian
1.375% & Up	2.008%	FHLB-Callable Coupon	03/16/10	09/16/13	1,000,000	1,000,000	1,004,970	Custodian
2.125%	2.125%	FHLB-Callable Coupon	03/17/10	09/17/13	1,000,000	1,000,000	1,000,760	Custodian
2.000%	2.000%	FNMA-Callable Coupon	04/15/10	04/15/13	1,000,000	1,000,000	1,001,850	Custodian
2.662%	2.662%	NYCGEN-Municipal Bond	06/04/10	05/01/14	1,000,000	1,000,000	1,011,570	Custodian
2% & Up	2.697%	FNMA-Callable Coupon	07/14/10	07/14/15	1,000,000	1,000,000	1,002,240	Custodian
1.5% & Up	2.229%	FNMA-Callable Coupon	07/28/10	07/28/15	1,000,000	1,000,000	995,430	Custodian
1% & Up	2.065%	FHLB-Callable Coupon	08/24/10	08/24/15	1,000,000	1,000,000	994,570	Custodian
1.75% & Up	2.327%	FNMA-Callable Coupon	08/25/10	08/25/15	1,000,000	1,000,000	991,600	Custodian
1.500%	1.500%	FNMA-Callable Coupon	09/08/10	09/08/14	1,000,000	1,000,000	992,360	Custodian
1.125%	1.125%	FNMA-Callable Coupon	09/09/10	09/09/13	1,000,000	1,000,000	996,410	Custodian
1.125%	1.125%	FHLB-Bullet	09/20/10	12/30/13	1,000,000	1,000,000	996,120	Custodian
1.200%	1.200%	FNMA-Callable Coupon	09/27/10	09/27/13	1,000,000	1,000,000	996,500	Custodian
1.5% & Up	2.080%	FNMA-Callable Coupon	09/29/10	09/29/15	1,000,000	1,000,000	981,660	Custodian
1.250%	1.250%	FNMA-Callable Coupon	09/30/10	12/30/13	1,000,000	1,000,000	990,090	Custodian
1.375%	1.375%	FFCB-Callable Coupon	10/14/10	10/14/14	1,000,000	1,000,000	981,740	Custodian
1.000%	1.000%	FFCB-Callable Coupon	10/18/10	10/18/13	1,000,000	1,000,000	990,370	Custodian
1.000%	1.000%	FNMA-Callable Coupon	10/18/10	10/18/13	1,000,000	1,000,000	993,920	Custodian
1.150%	1.156%	FHLB-Callable Coupon	10/21/10	04/21/14	999,780	1,000,000	986,640	Custodian
1.375% & Up	1.980%	FNMA-Callable Coupon	10/26/10	10/26/15	1,000,000	1,000,000	978,390	Custodian
1.250%	1.250%	FFCB-Callable Coupon	10/27/10	10/27/14	1,000,000	1,000,000	975,570	Custodian
1% & Up	1.874%	FNMA-Callable Coupon	10/28/10	10/28/15	1,000,000	1,000,000	977,470	Custodian
1.25% & Up	1.784%	FNMA-Callable Coupon	11/12/10	11/12/15	1,000,000	1,000,000	973,840	Custodian
1.150%	1.150%	FHLB-Callable Coupon	11/24/10	07/24/14	1,000,000	1,000,000	985,430	Custodian

LVMWD Investment Report for the Month Ending February 2011

Disc./Cpn Rate	Yield To Maturity	Investment Type	Date Invested	Date Matures	Book Value	Par Value	Market Value	Market Value Source
Investments Maturing After Six Months (continued):								
1.375%	1.375%	FHLB-Callable Coupon	11/24/10	04/04/14	1,000,000	1,000,000	992,630	Custodian
1.125%	1.125%	FFCB-Callable Coupon	12/06/10	12/06/13	1,000,000	1,000,000	988,300	Custodian
1.500%	1.500%	FFCB-Callable Coupon	12/08/10	12/08/14	1,000,000	1,000,000	989,750	Custodian
1.140%	1.140%	FHLB-Callable Coupon	12/09/10	12/09/13	1,000,000	1,000,000	997,260	Custodian
1.750%	1.750%	FHLB-Callable Coupon	12/17/10	12/17/14	1,000,000	1,000,000	983,910	Custodian
1.375%	1.375%	FFCB-Callable Coupon	12/20/10	12/20/13	1,000,000	1,000,000	995,310	Custodian
1.400%	1.400%	FNMA-Callable Coupon	12/27/10	12/27/13	1,000,000	1,000,000	997,540	Custodian
1.400%	1.400%	FNMA-Callable Coupon	01/06/11	01/06/14	1,000,000	1,000,000	997,230	Custodian
1.500%	1.500%	FHLB-Callable Coupon	01/14/11	01/14/14	1,000,000	1,000,000	995,670	Custodian
1.450%	1.450%	FNMA-Callable Coupon	01/24/11	01/24/14	1,000,000	1,000,000	1,003,480	Custodian
1.625%	1.625%	FNMA-Callable Coupon	01/25/11	07/25/14	1,000,000	1,000,000	992,080	Custodian
2.000%	2.000%	FHLB-Callable Coupon	01/28/11	07/28/14	1,000,000	1,000,000	999,810	Custodian
2.000%	2.000%	FFCB-Callable Coupon	02/02/11	02/02/15	1,000,000	1,000,000	1,001,470	Custodian
2.000%	2.000%	FHLB-Callable Coupon	02/28/11	11/28/14	1,000,000	1,000,000	1,003,060	Custodian
		Sub-Total			44,044,370	44,000,000	43,858,670	
		Total Investments			45,051,720	\$45,000,000	44,865,290	

Note: Gov. Agency Coupon Notes will distribute interest every six month.

- 1-CPNRT=1.25% to 3/11; thereafter 2.625%.
- 2-CPNRT=1.375% to 9/11; thereafter 2.5%.
- 3-CPNRT=2% to 7/12; 2.5% to 7/13; 3% to 7/14; 3.75% to 1/15; thereafter 4.5%.
- 4-CPNRT=1.5% to 1/13; thereafter 3%.
- 5-CPNRT=1% to 8/12; 1.5% to 8/13; 2.5% to 8/14; thereafter 4.5%.
- 6-CPNRT=1.75% to 9/12; 2% to 9/13; 2.5% to 9/14; 3% to 9/15; thereafter 4.5%.
- 7-CPNRT=1.5% to 9/12; 1.75% to 9/13; 2% to 9/14; 2.5% to 9/15; thereafter 4%.
- 8-CPNRT=1% to 10/12; 1.5% to 10/13; 2% to 10/14; 3.5% to 4/15; thereafter 4.5%.
- 9-CPNRT=1% to 10/12; 1.5% to 10/13; 2% to 10/14; 3.5% to 4/15; thereafter 4.5%.
- 10-CPNRT=1.25% to 11/12; 1.5% to 5/14; 2% to 11/14; 2.5% to 5/15; thereafter 4%.

Interest earnings for the month were as followed:

	Amount Earned/Accrued	Current Yield
Refunding Revenue Bonds - Reserve Fund (Bank of New York Mellon)	\$1,036	0.512%
Investments	61,590	1.678%
Local Agency Investment Fund (LAIF)	10,250	0.512%
HighMark US Treasury Money Market Fund	1	0.010%
Sweep Accounts (Wells Fargo Bank/Bank of New York Mellon)	6	0.010%
Total Earnings	\$72,883	

Schedule of Investment Balance Limitations (Per District investment policy)

The source of the market valuation is as followed:

Investments (Note 1)	Total Amount Invested	% of Total	Max. Limit Allowed
Refunding Revenue Bonds - Reserve Fund (Bank of New York Mellon/LAIF)	\$45,051,720	59.93%	no limit
HighMark US Treasury Money Market Fund (Union Bank)	2,762,990	3.68%	1 yr debt pmt.
Local Agency Investment Fund (LAIF)	25,751	0.03%	no limit
	27,333,287	36.36%	50,000,000
Total	\$75,173,748	100.00%	

(Note 2)

Note 1: The average weighted duration for investments, excluding LAIF, is 1.114 days, which is under the assumption that callable coupons will not be called and will be held until maturity.
 Note 2: In February 2011, Joint Powers Authority's participation in investment is \$5,612,447.22, of which \$3,747,863.51 (or 66.78%) belongs to LV.

LVMWD Investment Report for the Month Ending February 2011

Bank Account Balances as of February 28, 2011:


Bank Name	Account Type	Amount
Wells Fargo Bank	Checking	\$158,411 (Note 3)
Wells Fargo Bank	Sweep	147,904
Bank of New York Mellon	Money Market	0
	Total	\$306,315

Note 3: This is bank balance without adjusting for outstanding checks. The total amount of outstanding checks is unavailable at the time of reporting.

"All District investments are included in this report and all investments, except those relating to debt issues and deferred compensation programs funds, conform to District investment policy. All investment transactions within the period covered by this report, except for the exceptions noted above, conform to District investment policy. Deferred compensation program funds are not included in this report; their investment is directed by individual employees participating in the deferred compensation program and not by the District. Debt issue funds are included in this report; their investment is controlled by specific provisions of the issuance documents and not by the District."

"The deposits and investments of the District safeguard the principal and maintain the liquidity needs of the District, providing the District with the ability to meet expenditure requirements for the next six months. The maturity dates are compatible with foreseeable cash flow requirements. The deposits and investments can be easily and rapidly converted into cash without substantial loss of value."

Approved for March 22, 2011 Agenda:


 John R. Mundy, General Manager

I HEREBY CERTIFY THAT THE FOREGOING IS TRUE AND CORRECT
 TO THE BEST OF MY KNOWLEDGE

Andrew Hicks
 03-14-2010

 Barry Steinhardt, Treasurer



March 22, 2011 LVMWD Regular Board Meeting

TO: Board of Directors

FROM: Facilities & Operations

Subject: Call for Bids - 1235 Foot Backbone Improvements Project, Agoura Hills Pipeline: Proposed bid schedule and Notice Inviting Sealed Bids for the 1235 Foot Backbone Improvement Project, Agoura Hills Pipeline.

SUMMARY:

On October 26, 2010, the Board received and filed the Final Design Report for Phase I of the backbone program (LVMWD #2457.00), prepared by Kennedy/Jenks Consultants Engineers & Scientists (Kennedy/Jenks). Phase I of the Backbone Program includes 11,700 feet of 16 inch to 18 inch pipeline for the Agoura Hills Pipeline and 9,475 feet of 30 inch pipeline for the Calabasas Pipeline project. Separate bid packages were prepared for each project. The Calabasas Pipeline is scheduled to start construction in mid-fiscal year 11-12. Kennedy/Jenks has completed the plans and specifications for the Agoura Hills Pipeline project. The bid schedule is as follows:

Call for Bids	March 22, 2011
1st Advertisement	March 28,2011
2nd Advertisement	April 4, 2011
Pre-Bid Tour	April 25, 2011
Open Bids	May 9, 2011
Award Bid	May 24, 2011

FINANCIAL IMPACT:

Kennedy/Jenks design services were funded through CIP Work Order Account 10344 with a budget of \$280,361.

Prepared By: Lindsay Cao, P.E., Associate Engineer

ATTACHMENTS:

[Notice Inviting Bids - Backbone](#)

NOTICE INVITING SEALED PROPOSALS (BIDS)
1235 FOOT BACKBONE IMPROVEMENT PROJECT, AGOURA HILLS PIPELINE

NOTICE IS HEREBY GIVEN that the Board of Directors of Las Virgenes Municipal Water District invites and will receive sealed proposals (bids) up to the hour of 3:00 p.m. on May 9, 2011, for furnishing the work described in the contract documents. Bids received after the time stated in the Call for Bids will not be accepted and will be returned, unopened, to the bidder. The time shall be determined by the time on the receptionist telephone console in our Headquarters lobby. Proposals will be publicly opened and read aloud at the office of the District, 4232 Las Virgenes Road, Calabasas, California. Said bids shall conform to and be responsive to the Specifications and Contract Documents for said work as heretofore approved by the District.

A **mandatory** pre-bid tour will be conducted at 9:00 a.m. on April 25, 2011. The meeting will begin at the District headquarters at 4232 Las Virgenes Road, Calabasas, CA 91302. Attendance at the pre-bid conference is a condition precedent to submittal of the bid and the District will not consider a bid from any bidder not represented at the pre-bid conference. Questions regarding the project may be directed to Lindsay Cao, P.E., at 818.251.2163.

Sets of contract documents may be purchased at the District upon payment to the District by check or cash only for Fifty-Five Dollars (\$55) for each hard copy set and \$10 for each CD set. Purchase price will not be refunded.

Each bid must be on the District bid form and shall be sealed and filed with the secretary of the District at or before the time stated in the Notice.

All terms and conditions contained in the Specifications and Contract Documents shall become part of the contract. The Board of Directors of Las Virgenes Municipal Water District reserves the right to reject any and all bids and to waive any and all irregularities in any bid. No bidder may withdraw his bid after the said time for bid openings until 60-days thereafter or until the District has made a final award to the successful bidder or has rejected all bids, whichever event first occurs.

The Board of Directors of the District reserves the right to select the schedule(s) under which the bids are to be compared and contract(s) awarded.

BY ORDER OF THE GOVERNING BODY OF
LAS VIRGENES MUNICIPAL WATER DISTRICT

Dated

Charles Caspary
Secretary of the Board

INFORMATION FOR BIDDERS

1. GENERAL

The work hereunder must be done in strict conformity with the plans and specifications adopted and approved by the District.

2. CONTRACT DOCUMENTS

(a) The contract documents shall consist of the following:

- Notice Inviting Sealed Proposals (Bids)
- Information for Bidders
- Proposal or Bid Form
- Noncollusion Declaration
- Agreement
- Addenda issued Prior to Bid Opening
- Certificate(s) of Insurance
- Workers Compensation Certificate
- Bonds
- Special Provisions
- Plans and Specifications

(b) Terms and conditions contained in the contract documents are part of the contract. The governing board of the District may reject bids and to waive informalities in bids. No bidder may withdraw a bid until the District has made a final award to the successful bidder or has rejected all bids.

3. PROPOSALS

Bids shall be made upon the form of proposal furnished by the District and a part of the contract documents. Bids shall be properly executed and with all items filled in; the signatures of persons signing shall be in longhand. Erasures, interlineations or other corrections shall be authenticated by affixing in the margin immediately opposite the correction, the initials of a person signing the bid. The unit price and the total amount named by a bidder for an item are not in agreement, the unit price alone shall be *considered as representing the bidder's intention, and the totals shall be corrected to conform.*

Persons bidding may submit bids on any of the schedules set forth in the bid form.

Bids shall not contain recapitulation of the work to be done. Alternative proposals will not be considered except as called for. No oral, telegraphic or telephonic proposals or modifications will be considered.

Bids shall be accompanied by a bidder bond in a form acceptable to the District or cash in the amount of 10% of the bid price.

Before submitting a bid, bidders shall carefully examine all contract documents, shall visit the site of the work, shall fully inform themselves as to all the existing conditions and

limitations, and shall include in the bid a sum to cover the cost of all items included in the contract. No allowance will be made because of lack of such examination or knowledge.

Bids shall be sealed in an envelope marked **1235' BACKBONE IMPROVEMENT PROJECT, AGOURA HILLS PIPELINE** addressed to the Secretary of the District, and be delivered thereto on or before the day and hour set for the opening of bids in the notice inviting sealed proposals, and shall bear the name of the bidder. It is the SOLE responsibility of the bidder to see that his bid is delivered and received in proper time. Any bid received after that scheduled closing time for receipt of bids shall be returned to the bidder unopened.

The District shall have a period of 60 days after the opening of bids within which to accept or reject the bids. If no bid is accepted within the period, or if the successful bidder executes and delivers the necessary contract documents to the District, the District will return to each bidder all checks and bonds received by the District from unsuccessful bidders within 10 days after the execution of the contract and presentation of required certificates and bonds or within 10 days after being requested to do so by the bidder if no bid is accepted within the period.

4. AGREEMENT AND BONDS

The form of contract which the successful bidder, as Contractor, will be required to execute is included in the contract documents, and should be carefully examined by the bidder. The agreement, bonds, and other documents to be executed by the Contractor shall be executed in original triplicates stamped according to law, one of which original triplicate shall be filed with *the District, and the others with the District's Attorney and the District's Engineer.*

The successful bidder, simultaneously with the execution of the agreement, shall furnish and maintain a payment bond in an amount equal to 100% of the contract price and a faithful performance bond in an amount equal to 100% of the contract price. The bonds shall be secured from a surety company satisfactory to the District and whose name is on file with the County Clerk of Los Angeles County as an approved and financially sound surety company, authorized to transact business in this State.

The bonds shall meet all of the requirements and contain the conditions required by Sections 3247 and 3248 inclusive, of the Civil Code, and other applicable provisions of the law and regulations of the State of California.

Failure to execute the contract and file acceptable bonds and proof of insurance coverage as provided therein within the time set forth herein shall be just cause for the annulment of the award and forfeiture of the proposal guarantee.

5. ADDENDA OR BULLETINS

Addenda or bulletins issued before the time to submit bids expires, or forming a part of the contract documents furnished to the bidder for preparation of his bid, shall be covered in the bid and shall be made a part of the contract.

6. WITHDRAWAL OF BID

A bidder may withdraw the bid personally or by a signed written request prior to the scheduled time for opening of the bids (but not after).

7. AWARD OR REJECTION OF BIDS

The contract will be awarded to the lowest responsible bidder complying with these instructions and with the notice inviting sealed proposals. The District may reject bids or waive informality in bids. If in the judgment of the District a bid is unbalanced, or if the bidder is not responsible, it shall be considered sufficient grounds for rejection of the entire bid.

8. BIDDERS INTERESTED IN MORE THAN ONE BID

No person, firm or corporation shall make or file, or be interested in more than one bid for the same work, unless alternative bids are solicited. A person, firm or corporation submitting a subproposal to a bidder, or who has quoted prices on material to a bidder, is not disqualified from submitting a subproposal or quoting prices to other bidders.

9. OTHER REQUIREMENTS

Before award of the contract, a bidder upon request shall furnish a recent statement of financial condition and previous construction experience or other evidence of qualifications.

Before entering into a contract, the bidder to whom the contract has been awarded shall *furnish satisfactory evidence of workers' compensation insurance and public liability and property damage insurance as specified in the special provisions.*

Contractor's License requirement for this project is: Class A. General.

**PROPOSAL
TO
LAS VIRGENES MUNICIPAL WATER DISTRICT
FOR THE CONSTRUCTION OF
*[Name of Project]***

Name of Bidder: _____

Business Address: _____

Phone No.: _____

The site of the work to be constructed and referred to herein is in the County of Los Angeles, California.

The work is to be in accordance with the specifications and contract documents and as shown on plans therefore entitled: *[Name of Project]*.

TO THE GOVERNING BOARD OF LAS VIRGENES MUNICIPAL WATER DISTRICT.

In compliance with your notice inviting sealed proposals (bids) and other documents, the undersigned bidder proposes to perform the work and in a workmanlike manner, in strict conformity with the plans and specifications and other contract documents, including Addenda Nos. ^[____], ^[____], and ^[____], on file in the office of the Secretary of the District for the contract unit prices herein.

[Bid Schedule]

It is understood the foregoing quantities are approximate only and are solely for the *purpose of facilitating the comparison of bids. The Contractor's compensation will be computed upon the basis of the actual quantities in the complete work, whether they are more or less than those shown.*

State manufacturers name and address for each type of material upon which this proposal is based.

TYPE OF MATERIAL

MANUFACTURER

Contractor shall submit to District the following information:

- (1) The name and location of the place of business of each subcontractor performing work, labor or render construction services and each subcontractor licensed by the State of California specially fabricating and installing improvements according to detailed drawings or the plans and specifications, in an amount in excess of one-half of one percent of the Contractor's total bid.
- (2) The portion of the work to be done by each subcontractor.

The contractor shall list only one subcontractor for each portion of the work identified in the bid.

DIVISION OF WORK OR TRADE	NAME OF SUBCONTRACTOR	LOCATION OF MILL, SHOP OR OFFICE

SIGNATURE OF AUTHORIZED OFFICER OF BIDDER: _____

PRINTED NAME: _____

DATED: _____

NOTE: If Bidder is a corporation, the legal name of the corporation shall be set forth above, together with the signature of the officer or officers authorized to sign contracts on behalf of the corporation. If Bidder is a co-partnership, the true name of the firm shall be set forth above, together with the signature of the partner or partners authorized to sign contracts on behalf of the co-partnership. If the Bidder is an individual, the signature shall be placed above. If a joint venture of a special partnership, the names of the general partners and special partners shall be submitted.

NONCOLLUSION DECLARATION

The undersigned declares under penalty of perjury as follows:

1. I am employed by [_____] of [_____], the party making the foregoing bid as [_____].
2. The bid is not made in the interest of, or on behalf of, any undisclosed person, partnership, company, association, organization, or corporation.
3. The bid is genuine and not collusive or sham; that the bidder has not directly or indirectly induced or solicited any other bidder to put in a false or sham bid, and has not directly or indirectly colluded, conspired, connived, or agreed with any bidder or anyone else to put in a sham bid, or that anyone shall refrain from bidding.
4. The bidder has not in any manner, directly or indirectly, sought by agreement, communication, or conference with anyone to fix the bid price of the bidder or any other bidder, or to fix any overhead, profit, or cost element of the bid price, or of that of any other bidder, or to secure any advantage against the public body awarding the contract of anyone interested in the proposed contract.
5. All statements contained in the bid are true.
6. The bidder has not, directly or indirectly, submitted the bid price or any breakdown thereof, or the contents thereof, or divulged information or data relative thereto, or paid, and will not pay, any fee to any corporation, partnership, company, association, organization, bid depository, or to any member or agent thereof to effectuate a collusive or sham bid.

DATED: _____

By: _____



March 22, 2011 LVMWD Regular Board Meeting

TO: Board of Directors

FROM: Facilities & Operations

Subject: 2011 Las Virgenes Dam - Settlement Report

SUMMARY:

On January 18, 2011, Benner and Carpenter Land Surveyors surveyed at the Las Virgenes Dam to assess recent settlement. The Las Virgenes Dam Settlement Report has been developed from this survey. Previous surveys were performed by Benner and Carpenter Land Surveyors and Peak Surveys, Inc. Survey results from both surveyors are deemed to be consistent. This report addresses the movement of monuments located on the crest of the dam and in the spillway. Additionally, seepage flow, rainfall amounts and reservoir level measurements are analyzed in the report in a format recommended by the Department of Water Resources, Division of Safety of Dams (DSOD). This report incorporated seepage measurements taken from the District's automated monitoring facilities.

DSOD has requested that seepage flow, reservoir level and horizontal and vertical movement of monuments located on the crest of the Las Virgenes Dam be monitored and reported. The California Water Code authorizes DSOD to issue rules and regulations to safeguard life and property regarding dams. The last inspection performed by the DSOD occurred in the Spring 2010, with no significant comments. In the case of an earthquake of magnitude 5.0 or greater in the vicinity of the dam, the District is required to perform additional surveys. There have been no earthquakes of magnitude 5.0 or greater within the vicinity of the dam since the last survey performed on January 28, 2010.

The results of the survey show no significant variances from the measurements of past years, indicating that further investigation of the dam is not necessary until the next settlement survey tentatively scheduled for January 2012.

RECOMMENDATION(S):

Receive and file the Las Virgenes Dam Settlement Report No. 2474.00.

FINANCIAL IMPACT:

There is no financial impact associated with this action.

Prepared By: James Spicer II, Associate Engineer



March 22, 2011 LVMWD Regular Board Meeting

TO: Board of Directors

FROM: Facilities & Operations

Subject: Alternative Study to LV-1 and LV-3 Upgrades

SUMMARY:

The 2007 Potable Water Master Plan Update and the 2009 Project Alternative Study for the 1235-ft Backbone Improvements included a proposed upgrade of LV-1 turnout with Metropolitan Water District of Southern California (MWDSC) from the current 1135-foot gradient to the 1235-foot gradient. The proposed project, in partnership with MWDSC, would be advantageous to both agencies: it would fulfill MWDSC's contractual obligation to provide more capacity to neighboring Calleguas Municipal Water District while increasing water pressure to LVMWD, and enable LVMWD to eliminate the need to use LVMWD's conduit pump station to pump water from the current 1135-foot gradient to 1235-foot gradient. The increase in gradient would also require approximately \$1.7 million from LVMWD to strengthen two sections of a 30" pipeline that is not rated to receive 1235-feet of pressure.

An alternative to the \$1.7 million improvement is to construct a \$235,000 pressure reducing station that would reduce the proposed 1235-foot gradient to the 1205-foot gradient matching the pressure capacity for the two sections of the 30" pipeline. The reduction of the pressure using a pressure reducing station would reduce the use of the conduit pump station, but would not eliminate completely.

The 2007 Water Master Plan Update also included the upgrade of the LV-3 turnout from the current 4 cubic feet per second (cfs) to 6 cfs in anticipation of the proposed Deer Lake Development.

For the last few years, LVMWD staff has worked closely with MWDSC staff to develop project scope, planning, cost estimate and draft agreements for the proposed upgrades of LV-1 and LV-3. The cost estimate is approximately \$1.5 million for the LV-1 upgrade with LVMWD responsible for 1/3 of the cost. In addition, LVMWD staff was not successful in excluding certain conditions in the proposed agreement that would allow MWDSC to revert LV-1 back to the current lower pressure of 1135-foot gradient at the discretion of MWDSC despite the investment made by LVMWD. The cost estimate for the upgrade of the LV-3 is approximately \$500,000 with \$100,000 for construction cost and \$400,000 for MWDSC plan check and inspection services to ascertain that proposed improvement meets MWDSC standards.

With a total cost of nearly \$3 million for the upgrades of LV-1 and LV-3 and not being able to reach an agreement with MWDSC for certain operating conditions, LVMWD staff and AECOM staff revisited and investigated if there were any alternatives to the proposed upgrades.

The attached report identifies a new alternative that would achieve the objectives of LV-1 and LV-3 upgrades while eliminating all of the nearly \$3 million anticipated cost. The new alternative is to use the large capacity from the LV-2 Turnout and reduce the water pressure from 1235-foot gradient to 1205-foot gradient at the existing Conduit Pressure Reducing Station. Once the pressure is reduced, water will flow in the 30" pipeline to a proposed Twin Lakes Emergency Supply pipeline and ultimately downstream of LV-3 turnout. The Twin Lakes Emergency Supply pipeline was identified in the 2007 Water Master Plan Update to supply residents with water when there is a shutdown of MWDSC's West Valley Feeder #2 that would stop water flow to LV-1 and LV-3.

This new alternative would eliminate nearly \$3 million in capital improvement cost while providing capacity to downstream of the LV-3 connection and the Twin Lakes Pump station to serve the proposed Deer Lake development, in fill and increased existing demands. The flow of water from LV-2 would also eliminate the use of Conduit Pump Station during normally operating conditions while preserving the option of pumping water from LV-1 during emergency conditions such as a shut down of the Calabasas feeder. The only downside of not having 1235-foot gradient from the proposed upgrade of LV-1 connection is the increase in Twin Lakes pumping cost of approximately \$650 per year under current conditions to \$1,700 per year when Deer Lake is fully developed. The increase in pumping cost is due to lower suction pressure at the Twin Lakes Pump Station from the proposed 1235-foot gradient to the alternative 1205-foot gradient.

RECOMMENDATION(S):

Receive and file the Alternative Study for LV-1 and LV-3, LVMWD Report No. 2433.01.

Prepared By: John Zhao, Principal Engineer

ATTACHMENTS:

[Alternative Study LV-1 and LV-3](#)

Technical Memorandum

Page 1 of 10

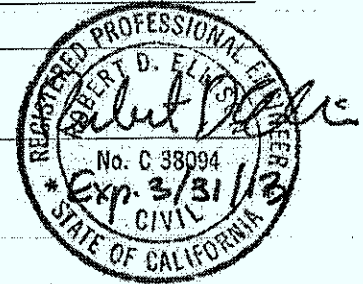
To John Zhao, PE – Las Virgenes MWD

CC David Lippman, PE

Subject Alternatives Study for LV-1 and LV-3

From Dan Ellison, PE and Ron Herbst, PE - AECOM

Date March 3, 2011

**INTRODUCTION**

Overview. This technical memorandum examines a new concept for operating the Las Virgenes MWD (LVMWD) system in the West Hills area of the San Fernando Valley. By adjusting the pressure setting for an existing pressure reducing station and by making minor modifications to a pipeline designed to provide an emergency supply to Twin Lakes Pump Station, planned upgrades to two turnout facilities can be deferred. These upgrades had been the responsibility of the Metropolitan Water District of Southern California (MWDSC) which owns the facilities, but were taking much more time and were expected to be much more costly to complete than originally planned. This technical memorandum is an amendment to the *Project Alternatives Study for the 1,235-ft Backbone Improvements Project*, LVMWD Report No. 2433.00, October 2009, specifically **Section 4** which addressed the use of the "30-inch Conduit", supply to Twin Lakes Pump Station, and proposed upgrades to the LV-1 and LV-3 Turnouts.

LV-1 Turnout Upgrade. The LV-1 Turnout delivers water from the West Valley Feeder No. 1 of Metropolitan Water District of Southern California (MWDSC) to a pipeline generally referred to as "the 30-inch Conduit," whence water is delivered to a few Las Virgenes customers in the West Hills area. At times, water is also pumped from the 30-inch Conduit into the District's main backbone system, via Conduit Pump Station. An upgrade of this MWDSC turnout facility had been planned to help MWDSC relieve a choke point in their system. The proposed upgrade could also produce several benefits to LVMWD.

LV-3 Turnout Upgrade. The LV-3 Turnout delivers water from MWDSC's West Valley Feeder No. 2 to Twin Lakes Pump Station. Upgrades to this turnout were also planned as part of an upgrade to the pump station, required to meet growing demands in the area.

Previous recommendations. This memorandum re-examines recommendations from the District's last two Potable Water Master Plans (2000 and 2007), the *West Hills Facility Report (2001)*, the *Preliminary Design Report for Twin Lakes Pump Station Expansion (2005)*, and the *Project Alternatives Study for the 1,235-ft Backbone Improvements (2009)*. In these studies, the following recommendations are found:



1. Connect the LV-1 Turnout to West Valley Feeder No. 2, thereby raising the gradient in the 30-inch Conduit.
2. Install a pressure reducing station, to limit pressure in the 30-inch Conduit, to maintain a standard safety factor.
3. Re-rate the pressure capacity of the 30-inch Conduit, to account for the actual steel used in its manufacture.
4. Upgrade the suction pipeline to Twin Lakes Pump Station, to provide flows needed for expected tract developments. This upgrade includes increasing the capacity of the LV-3 Turnout facility.
5. Install an emergency supply line to Twin Lakes Pump Station, to provide water to the pump station from the District's system, when the MWDC feeder is not operating.

Because of various difficulties in advancing the work at the LV-1 and LV-3 Turnouts (as described below), and due to the unexpected high cost of this turnout work, an alternative system has been discussed over the last year, involving using the emergency pipeline to Twin Lakes as a secondary supply line (not just an emergency supply), and raising the gradient in the 30-inch Conduit by adjusting the pressure reducing station at Conduit Pump Station. By doing these things, the needed upgrades to the LV-1 and LV-3 Turnouts can be deferred for many years - if not indefinitely. This memorandum presents AECOM's analysis of this alternative system.

LV-1 TURNOUT - BACKGROUND

System Description. Two MWDC transmission pipelines provide water to LVMWD facilities in the West Hills area. West Valley Feeder No. 1 was the original source of supply to LVMWD. Providing water from the Weymouth Treatment Plant, this pipeline operates at a maximum hydraulic gradient of 1135 feet. West Valley Feeder No. 2 was constructed when the State Water Project was completed. Providing water from the Jensen Treatment Plant, this pipeline operates at a maximum hydraulic gradient of 1,260 feet. Both pipelines extend through the Santa Susana tunnel terminating at a turnout in Simi Valley which supplies Calleguas MWD (CA-2).

With the completion of Feeder No. 2, Feeder No. 1 was no longer needed to convey MWDC water to LVMWD and Calleguas MWD. Most of this older pipeline was subsequently leased to the Los Angeles Department of Water and Power and is now integral to their system of water distribution in the northwest San Fernando Valley. However, the western-most segment of Feeder No. 1 was retained to convey water from the CA-2 turnout back to the LV-1 turnout. The portion leased to LADWP is separated from the segment used to supply LVMWD by a valve. Plate 1 shows schematically how LVMWD's backbone system is supplied through the West Valley Feeders and three turnout facilities.

Although the water delivered through Feeder No. 1 comes from Feeder No. 2, the maximum gradient is lower. Because the Calleguas system, Feeder No. 1, and the 30-inch Conduit were all designed for a maximum gradient of 1135-ft, pressure is reduced at the CA-2



turnout to avoid over pressurizing these facilities. This pressure reduction is achieved using a small hydropower facility in conjunction with pressure reducing valves.

Proposed LV-1 connection relocation. LVMWD's *2000 Potable Water Master Plan* (LVMWD Report No. 2096.05) first recommended connecting the LV-1 turnout directly to Feeder No. 2, which is directly across the street from the LV-1 metering station. By connecting the LV-1 turnout to the higher gradient pipeline, the District can:

- Reduce pumping costs at the (future) Woolsey Pump Station
- Serve additional customers in the Box Canyon area (who are currently served through a connection to the City of Simi Valley), and
- Increase flows to the backbone system that are available through the 30-inch Conduit.

Shortly after the *2000 Potable Water Master Plan* was written, however, a follow-up study (the *West Hills Facility Report* - LVMWD Report No. 2143.00) determined that two sections of the 30-inch Conduit were not rated for the pressures that would be encountered. Most of the existing pipeline was rated at 150 psi or higher, except for approximately 5,060-ft which used Class 100 pipe.

Although the structural capacity of the 30-inch Conduit was determined to be insufficient to withstand the maximum 1,260-ft gradient, the more recent *Backbone Study* found that it was capable of withstanding a 1,205-ft gradient. The *Backbone Study* recommended moving the LV-1 connection, as earlier proposed, but recommended the inclusion of a pressure reducing station to prevent overstressing the pipe. This study found that during recent operations, the gradient in the Feeder No. 2 had been recorded at the CA-2 Turnout as varying between a gradient of 1,196 feet and 1,262 feet. Much of the time, the gradient was near or below the 1,205-ft gradient that the 30-inch Conduit could handle. Thus, a pressure reducing station would simply regulate the pressure at a level where it often already operates. Thus the recommended improvements documented in *Project Alternatives Study for the 1,235-ft Backbone Improvement Project* included moving LV-1 to the higher gradient supplied by West Valley Feeder No. 2, re-rating the Class 100 pipe segment to its actual pressure rating of 107 psi, and installing a pressure reducing station as to not exceed the 107 psi rating.

Difficulties with LV-1 reconnection. Moving the connection of LV-1 literally across the street proved to be more difficult than expected. Although only a small amount of pipeline was needed, because of extreme utility congestion at this location, a connection concept developed by MWDSC involved deep bore-and-jack construction under Feeder No. 1. The expected high cost of the work further complicated the development of a cost-sharing agreement between MWDSC and LVMWD for the work, as explained below.

Calleguas MWD capacity issues. Moving the LV-1 connection would serve a second purpose, relieving capacity problems which MWDSC was experiencing in delivering water to Calleguas MWD. Because the water delivered to LV-1 must currently flow through the CA-2 Turnout, the amount of water available to Calleguas is thereby reduced. This chokepoint



has been a concern for several years, as development in Ventura County has increased the demands on the CA-2 Turnout. As it is, MWDC cannot provide Calleguas with their agreed-upon capacity.

MWDC has investigated several alternatives for solving this capacity constraint. In 2007, MWDC published its *Integrated Area Study, Report No. 1317*, which looked at this issue among others in their system. Both short-term and long-term recommendations were presented to meet current and future demands. Building upon its *2007 Draft West Valley Study*, MWDC presented several alternatives for increasing the capacity of the CA-2 Turnout, while maintaining LVMWD's capacity at LV-1.

The first alternative, estimated to cost \$2.5 million plus engineering and administrative costs, was to relocate the LV-1 connection to West Valley Feeder No. 2, increasing the maximum gradient to 1,260 feet. The second alternative, estimated to cost \$1 million plus engineering and administrative costs, was to build a connecting pipeline and pressure reducing station between West Valley Feeders No. 1 and 2, prior to the CA-2 Turnout. The pressure reducing station would be set to a downstream gradient equal to the existing gradient in Feeder No. 1. This second alternative would result in no increase in the pressure at the LV-1, and thus would provide no benefit LVMWD.

Draft cost sharing agreement. By code, MWDC does not guarantee hydraulic grade to their customers. They therefore recommended the second (less expensive) alternative, but were willing to implement the first alternative for LVMWD's benefit with a cost-sharing arrangement. A draft cost sharing agreement was developed between the two agencies, but it contained a provision that could effectively negate the value of the LVMWD investment, if it was ever exercised. This provision reads:

"Metropolitan does not guarantee hydraulic grade at this service connection, even after the construction of the intertie described herein. Additionally, Metropolitan may elect to serve the LV-01 service connection from the West Valley Feeder No. 1, should future demands or operational considerations dictate. However, in the event of system capacity issues in either of the West Valley Feeders, Metropolitan will strive to work cooperatively with the affected agencies to discuss potential solutions for meeting West Valley Area demands, within Administrative Code requirements."

Thus, this provision would place at risk the investment of over \$1.5 million by LVMWD for relocating the LV-1 connection. The system described later in this report, with only the additional investment of installing check valves on the proposed Twin Lakes supplement line achieves nearly the same results desired by LVMWD as moving the LV-1 connection. MWDC may still need to implement one of the alternatives identified in their study, in order to provide the full capacity rating of the CA-2 Turnout, but this becomes an issue that will have little effect on LVMWD.

LV-3 TURNOUT - BACKGROUND

The Twin Lakes Pump Station currently serves the Twin Lakes pressure zone and the Upper Twin Lakes pressure zone, and will eventually serve the proposed Deerlake Ranch pressure zone. The total buildout demand for these developments (including allowances for



future fill-in) is estimated to be 2,100 gpm. To provide the total demand with 18 hours of pumping (a LVMWD criterion), the total design capacity for the Twin Lakes Pump Station must be 2,800 gpm. These demand calculations are outlined in Table 1.

Table 1 – Twin Lakes Pump Station Pumping Capacity Requirements

<u>Projected Demands</u>	<u>MDD - 2007 Master Plan Update</u>
Existing Demands at LV-3 Turnout	1,000 gpm
Projected Demands - Deerlake Ranch (Tract 53138)	670 gpm
Projected Demands - Area North of Twin Lakes	30 gpm
Allowance for Fill-in Development	400 gpm
Total Projected Demands	2,100 gpm
For 18 Hour Pumping	X (24/18)
Required Pumping Capacity	2,800 gpm

Several years ago, upgrades to the Twin Lakes system were begun in response to the development of the Upper Twin Lakes Zone and the County's approval of the Deerlake Ranch development. The Deerlake Ranch development will include the addition of nearly 325 homes, and rough grading for the development was about to start just as the local housing market collapsed. The upgrades needed to supply 2,800 gpm through the Twin Lakes system involved (1) adding two new pumps to Twin Lakes Pump Station, (2) constructing new pipelines on the suction side of the pump station, and (3) increasing the capacity of the MWDSC LV-3 Turnout facility. The construction of the emergency supply pipeline (as discussed below) was also recommended.

The increased capacity of Twin Lakes Pump Station cannot be served through the LV-3 Turnout as currently constructed. The existing turnout is an 8-inch pipeline and needs to be replaced by a 12-inch pipeline to provide the proposed capacity. In addition to supplying the Twin Lakes Pump Station, the LV-3 Turnout serves a small number of homes adjacent to Chatsworth Park South.

The required work entailed with upgrading the LV-3 Turnout consists of:

- Installing about 200 feet of 12-inch pipeline
- Removing (or abandoning in place) about 200 feet of 8-inch pipeline
- Replacing the existing flanged outlet on Feeder No. 2 with a larger outlet
- Replacing the meter with a larger unit
- Replacing 3 line valves



Under normal circumstances the construction cost for the above would likely be less than \$100,000, and the engineering costs would be no more than \$30,000, but as the project developed, complications arose that added greatly to the anticipated costs. These complications included:

- **Suspected hazardous material in pipe coating.** The coal tar coating on the existing 8-inch pipe was believed to contain polychlorinated biphenyl (PCB). According to MWDSC staff, this is typical for pipe of this era in their system. MWDSC procedures dictate that such pipe must be removed and disposed of in a hazardous materials facility, rather than abandoned in place.
- **Hazardous material in soil.** The pipeline construction would need to occur in Chatsworth Park South, where lead pellets and clay pigeon debris have caused closure of the facility (the park is the site of a former shooting range). Although LVMWD has developed acceptable, low-cost mitigation procedures for its own pipeline work within the park, MWDSC has expressed reservations regarding working in the area.
- **Upgrade of meter facility.** MWDSC desired to upgrade the LV-3 metering facility. The current facility does not contain telemetry.
- **Plan check and inspection costs.** MWDSC estimated the cost of providing plan check and inspection services would be \$350,000. (LVMWD would be responsible for the design and construction.)

EMERGENCY SUPPLY PIPELINE - BACKGROUND

As a part of the Twin Lakes Pumps Station Expansion Project a more reliable emergency supply was needed. Currently, when MWDSC West Valley Feeder No. 2 is down for maintenance or when an emergency occurs, Twin Lakes Pump Station is served through a temporary connection to the LADWP system, via a fire hydrant on Germain Street. This source of supply is no longer sufficient for the Twin Lakes and Upper Twin Lakes demands, unless emergency restrictions are imposed. When the Deerlake Ranch development is constructed, this temporary connection through the hydrant will become significantly short of needed capacity.

In response, Las Virgenes has planned and designed an emergency connection pipeline for the Twin Lake Pump Station. The proposed emergency supply would come from the District's 30-inch Conduit in Valley Circle Boulevard. A new 14-inch emergency supply pipeline was conceived to deliver water when MWDSC water was unavailable. The hydraulic gradient in this pipeline would be either 1,135 feet or 1,205 feet, depending on the gradient in the 30-inch Conduit.

PROJECT STATUS

The District planned the construction of the Twin Lakes improvements in three phases:



- **Phase 1** involved the pump station work. This work was initiated last year, to take advantage of favorable prices for construction.
- **Phase 2** involved the Las Virgenes pipeline work. This work was delayed due to complications involving lead contamination of the adjacent City of Los Angeles park, through which the pipelines traversed. To achieve economies of scale, the pump station pipeline work, and the emergency supply pipeline work was packaged together into one set of plans and specifications.
- **Phase 3** involved the MWDSC LV-3 Turnout work. This work would require coordination and approvals from MWDSC.

The Twin Lakes Pumps Station Expansion Project is currently nearing completion. Completion is anticipated in early 2011. However, the pump station will not be able to run at the planned capacity until upgrades to the suction pipelines are complete.

Design of Las Virgenes pipeline upgrades is nearing completion. As mentioned, lead contamination issues delayed the project for many months. More recent complications arose during the permit process with the Los Angeles County Watershed Flood Maintenance Division. The current design shows the emergency pipeline crossing over a box culvert, where there is very little cover. A more typical design would have called for an undercrossing. Explaining the reasons for the overcrossing and resolving the concerns of the County has delayed the permit by several months. However, the delays created due to this design feature are warranted. The over-crossing represents a very significant cost savings for the District by eliminating extremely difficult bore-and-jack construction in this location, where ground water levels are expected to be high, likely requiring de-watering, limited space exists for jacking/receiving pits, and there are various interfering utilities. We anticipate delivery of bid documents to the District shortly, assuming the revision proposed by this amendment are agreed upon.

The Phase 3 LV-3 Turnout work has encountered more significant delays. During its conceptual design process, MWDSC identified the potential for encountering hazardous material if the 8-inch pipeline were replaced; this could significantly affect costs. As part of the upgrade, MWDSC also wanted to modernize the metering facility. Also, the costs for the MWDSC oversight were much greater than had been anticipated. Resolving cost and design issues with MWDSC appeared to be a difficult process.

ALTERNATIVE SYSTEM - DESCRIPTION

Due to the various complications with the turnout facilities, as described above, AECOM and LVMWD staff identified an alternative system of improvements that was less costly and more readily implemented. This alternative system is shown in **Plate 2**, and consists of the following major elements:

- **LV-1 is eliminated as a regular source of water.** This is accomplished by installing a normally closed valve on the 30-inch Conduit, just north of the connection to the emergency supply pipeline. Although this sounds like a significant detriment, it is essentially how the system functions right now, except the normally closed valve is



currently further south, at Plummer Street. LV-1 will continue to be a source of water during scheduled and unscheduled shutdowns of the Calabaras Feeder. These shutdowns have been increasing in frequency due to repairs by MWDSC.

- **The hydraulic gradient is raised in the 30-inch Conduit**, from a nominal gradient of 1,135 feet to 1,205 feet. This is done by adjusting the pressure reducing station at Conduit Pump Station. From the LVMWD perspective, this eliminates most of the benefit of relocating the connection to LV-1. Although relocating the LV-1 connection would improve system redundancy, this work could be postponed indefinitely.
- **The emergency supply pipeline becomes a "Supplemental Supply Pipeline"** and is in service during normal operations. This is accomplished by installing check valves on the two pipelines that would be supplying the pump station. The need to upgrade LV-3 is therefore postponed indefinitely. When demands at Twin Lakes Pump Station exceed the current capacity of the LV-3 Turnout, supplemental flows will be drawn from the 30-inch Conduit via the Supplemental Supply Pipeline.

How the system works will depend on the gradient in West Valley Feeder No. 2:

- **Gradient above 1,205 feet.** Under this scenario, Twin Lakes Pump Station will function exactly as it does now when one to three pumps are running, drawing water from the LV-3 Turnout. If four or five pumps begin to run, the check valve on the proposed 14-inch Supplemental Supply pipeline will open and the pump station will pull water from both West Valley Feeder No. 2 and from the 30-Inch Conduit.
- **Gradient below 1,205 feet.** If the gradient in WVF-2 is lower than 1,205 feet, initial flows with one to three pumps running will come from the proposed 14-inch Supplemental Supply Pipeline. When four or five pumps are running, water will again flow both sources. This will require an additional check valve to be installed on LV-3 downstream of the metering station. This is necessary to prevent water from flowing out of the 30-inch Conduit into West Valley Feeder No. 2.

This system has the additional benefit of reducing the amount of water that stagnates in the 30-inch Conduit when the LV-1 Turnout is not in service. Currently, a valve at Plummer Street is shut, isolating the section of pipe that is between the LV-1 and LVMWD's northernmost customer served from this pipeline. This results in water stagnation in approximately 9,300 feet of pipe. Prior to reactivating the LV-1 turnout, this pipeline must be flushed. Under the alternative system proposed in this report, the normally closed valve moves to Devonshire, resulting in only 3,300 feet of isolated pipeline. Furthermore, by using the Twin Lakes Emergency Pipeline regularly as a supplemental pipeline, stagnation of water in this pipeline will not be an issue.

ANALYSIS

To verify that no negative hydraulic impacts would occur, AECOM examined in detail the hydraulic conditions on the suction side of the pump station and adjusted the system curves to reflect the proposed alternative system.



The hydraulic analysis showed that when the HGL in West Valley Feeder No. 2 is at its low point of 1190 feet and the pressure reducing station supplying the 30-inch Conduit is at its proposed set point HGL of 1,205 feet, approximately 2,000 gpm will flow from the 14-inch pipeline and the remaining 800 gpm of the design flow will come through the LV-3 Turnout. When the HGL in West Valley Feed No. 2 is at its maximum of 1,260 feet a majority of the flow will come through LV-3.

Figure 1 shows the anticipated changes in system curves that will occur with the alternative system. Slightly higher total dynamic head will occur under certain conditions. However, with the pumps that have been supplied during the upgrade, the total amount of flow that is available will exceed the required 2,800 gpm criterion established in **Table 1**. The pump curves used to generate **Figure 1** include the certified pump curves from the recently installed Pump No's. 5 and 6 at Twin Lakes Pump Station.

There will be an energy cost impact associated with this change. The water delivered to the 30-inch Conduit is generally pumped to a maximum HGL of 1,235 feet at the LV-2 Pump Station. Energy loss occurs when the HGL is reduced through the pressure reducing station to 1,205 feet. Assuming that about perhaps 25 percent of the Twin Lakes demand will be served through the pressure reducing station, and assuming that the average head loss through this station is 15 feet, the annual cost of energy lost is calculated at \$650, if the cost of electricity is \$0.13/kWh. This added energy cost could reach perhaps \$1,700 per year, if Deerlake Ranch is constructed and the amount of water supplied through the supplemental pipeline increases to 35 percent.

There is also an operational impact. With a normally closed valve isolating the LV-1 Turnout and with a normal gradient of 1,205 feet, the 30-inch Conduit will no longer be capable of providing a supplemental supply to the 1,235-ft Backbone System, via Conduit Pump Station. However, if the need arises, the isolation valve can be opened, LV-1 can be activated, and the gradient in the 30-inch Conduit can be restored to 1,135 feet. When this occurs, the suction-side gradient at Twin Lakes Pump Station will be affected, reducing the maximum pump station flows by perhaps 500 gpm. This is not expected to be a significant issue. Activation of LV-1 normally occurs during the winter, when repairs to the Calabasas Feeder are scheduled. If LV-1 is activated during the summer due to an unscheduled outage, emergency water restrictions would apply.

CONCLUSIONS AND RECOMMENDATIONS

The hydraulic analysis showed that by increasing the gradient in the 30-inch Conduit to 1,205 feet, Twin Lakes Pump Station can be adequately supplied without upgrading the LV-3 Turnout. Furthermore the HGL in the 30-inch Conduit can easily be increased by adjusting the existing PRV in Conduit Pump Station and installing the proposed isolation valve in the 30-inch Conduit at the connection point to the Twin Lakes Emergency Supply Pipeline. This largely eliminates the benefit (from the LVMWD perspective) of connecting the LV-1 Turnout to West Valley Feeder No. 2.

By implementing this alternative, the minimum TDH system curve is raised by 39-feet at the design flow of 2,800 gpm. The impact will be a slightly decreased flow rate from Twin Lakes



Pump Station under certain hydraulic conditions. Under typical operations, the impact will be minimal, virtually non-detectable. There will be a small amount of additional energy cost.

Table 2 provides a comparison of the new alternative described in this report, and the system that would be achieved with the previously proposed upgrades of LV-1 and LV-3.

Table 2 – Comparison of Different Systems

	Upgrades of LV-1 and LV-3	New Alternative
2800 gpm flow at Twin Lakes PS	Yes	Yes
Operating cost at Twin Lake PS	As currently planned	Additional \$650 to \$1700 per year
Capital cost	As currently planned	Reductions of: At least \$1.5 M for LV-1 At least \$0.4 M for LV-3
Emergency flows to Backbone System, via Conduit Pump Station	Higher flows available due to higher suction pressure	Same as current operations
Operating costs at Conduit PS	Lower operating costs due to higher suction pressure	Same as current operations
Water stagnation in pipelines	9,300 feet of 30-inch Conduit 2,600 feet of 14-inch Emergency Supply Pipeline	3,300 feet of 30-inch Conduit
Gradient in 30-inch Conduit	1205 feet all the time	1205 feet, except when LV-1 is activated
Operational flexibility	As currently planned	Somewhat reduced
Service to customers in Box Canyon currently served by Ventura County WWD.	Service to some additional customers might be possible ¹	Same as current operations

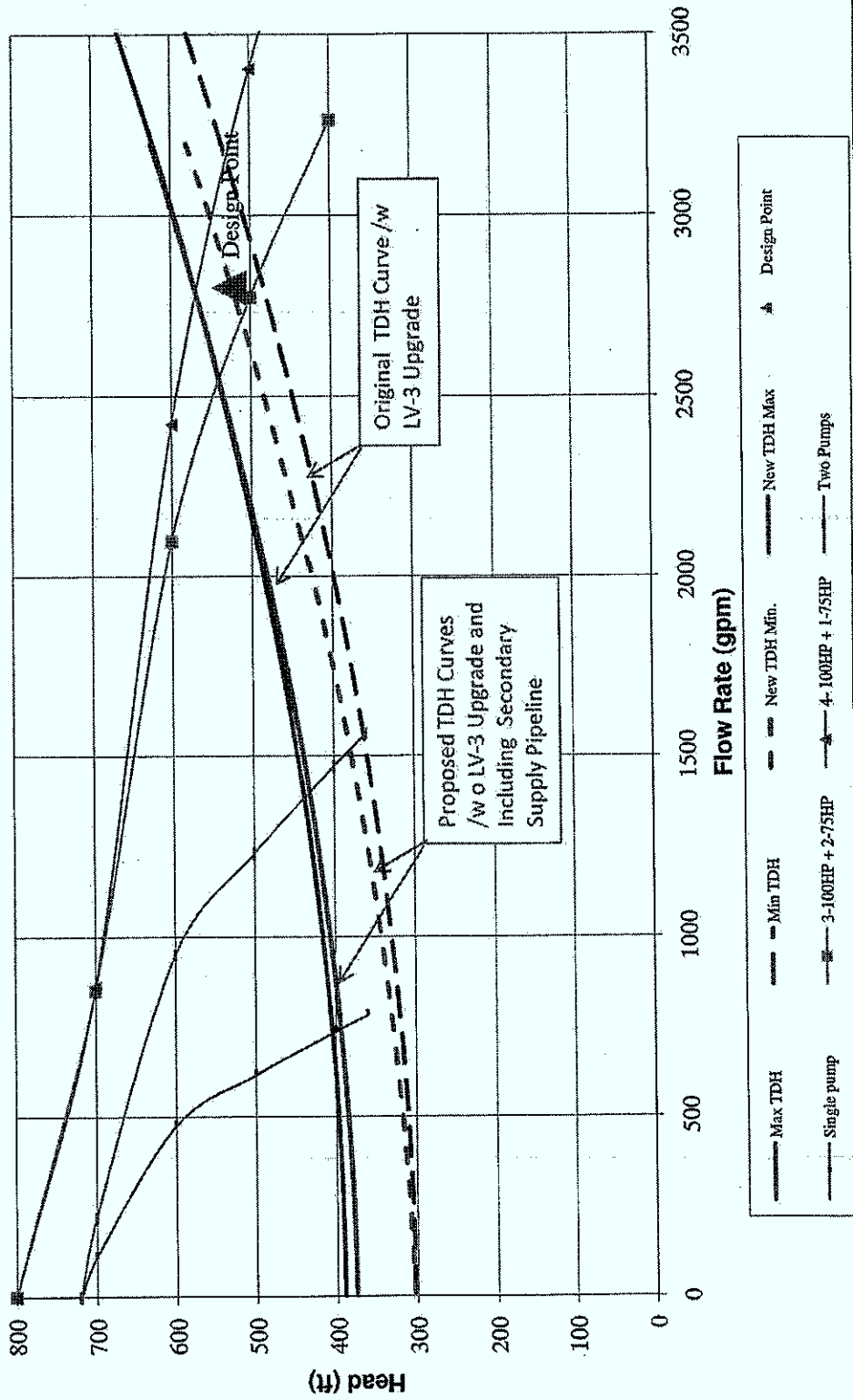
The proposed upgrades to the LV-1 and LV-3 would still provide greater operational flexibility and redundancy, and thus should remain part of LVMWD's master plan. However, achieving these benefits should be a lower priority to LVMWD than other system improvements. It is therefore recommended that the turnout upgrades be deferred.

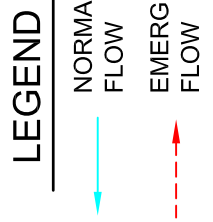
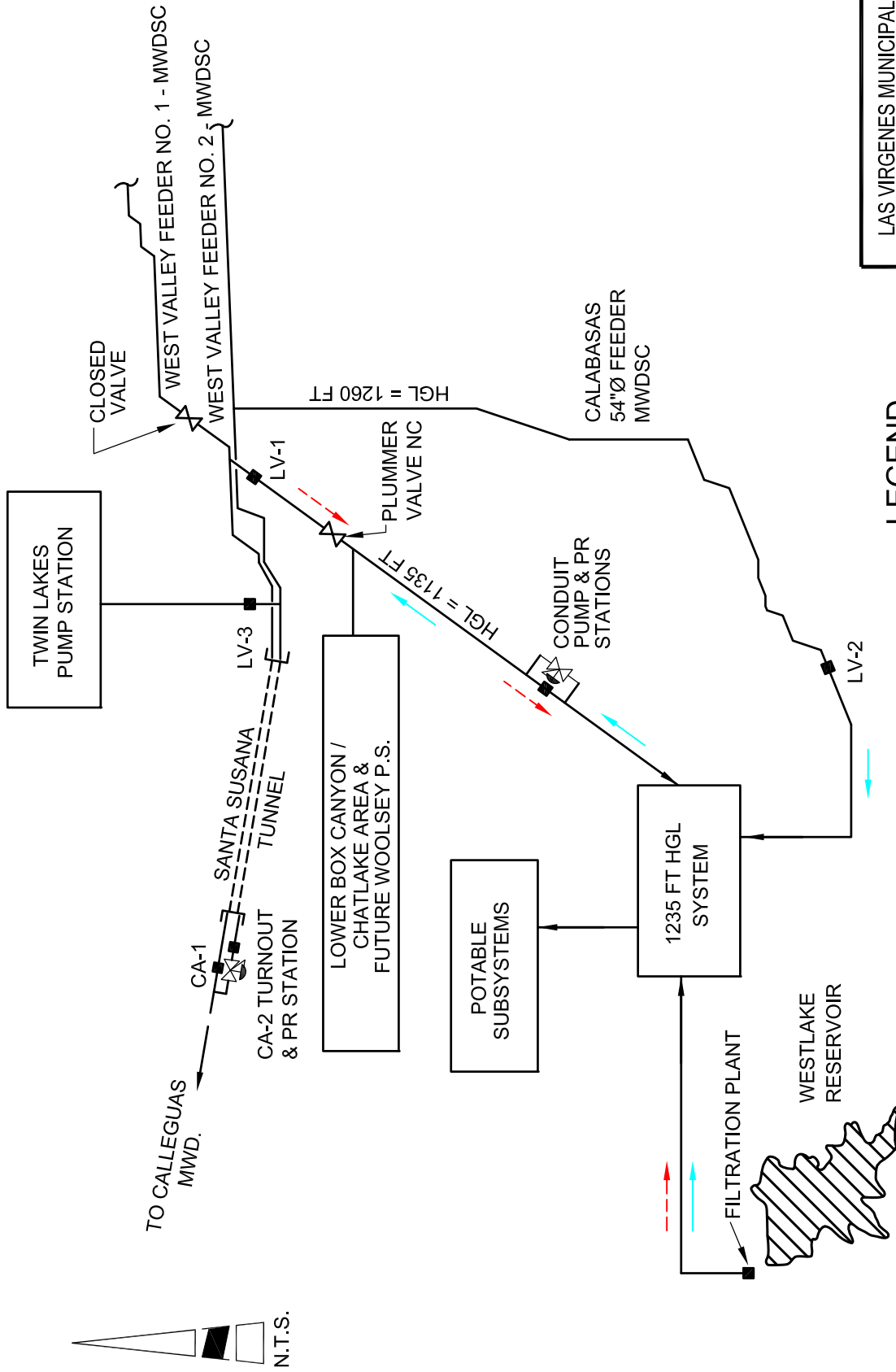
We appreciate the opportunity to provide this report to the District, and look forward to any questions you may have.

Enclosures: (1) Plate 1, (2) Plate 2, and (3) Figure 1.

¹ Service would be limited by the gradient in West Valley Feeder No. 2, which has recorded as low as 1189 feet and could be lower in years to come, as demands increase.

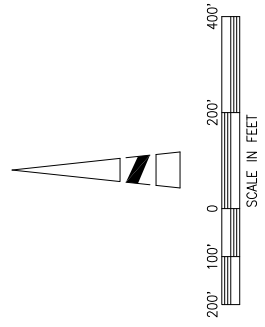
FIGURE 1
Certified Pump and Revised System Curves
for Twin Lakes Pump Station





LAS VIRGENES MUNICIPAL WATER DISTRICT ALTERNATIVE STUDY FOR LV-1 AND LV-3	
MAJOR SUPPLY AND TRANSMISSION FACILITIES	
FEBRUARY 2011	PLATE 1

ITEM 7B



— PROPOSED PIPELINES
— EXISTING PIPELINES

LAS VIRGENES MUNICIPAL WATER DISTRICT ALTERNATIVE STUDY FOR LV-1 AND LV-3	
LOCATION OF EXISTING AND PROPOSED FACILITIES	
FEBRUARY 2011	PLATE 2



March 22, 2011 LVMWD Regular Board Meeting

TO: Board of Directors

FROM: Facilities & Operations

Subject: Twin Lakes Pump Station Expansion Project Acceptance

SUMMARY:

On May 26, 2009, the Board awarded a contract to PCI/Myers Joint Venture to construct two pumps and various piping, and control systems at the Twin Lakes Pump Station to expand the pump station from the current pumping capacity of 2050 gallons per (gpm) to 2500 gpm. The expansion of the pump station is in anticipation of demand due to the proposed Deer Lake development, infill and increased demands.

A total of four change orders were approved administratively during the construction. Change Order #1 in the amount of \$7,200.00 credit was for the deletion of lead primer abatement for the surge tanks. The lead primer was found to be in good condition. Change Order #2 in the amount of \$5,587.00 was for fees paid to the electrical utility provider, LADWP. Per contract agreement LVMWD would pay such fees. Change Order #3 in the amount of \$9,845.75 was for the addition of an electrical study required by LADWP, and addition of a 10" valve and a flow meter per contract unit bid price. Change Order #4 in the amount of \$16,433.30 was for resolving several field conflicts with buried LADWP electrical conduits that include additional potholing to expose the utilities, relocation of transformer vault and credits for removing the canopy installation that was in conflict with LADWP conduits. Significant delays were encountered while working with LADWP to resolve the underground utility conflicts, and additional delays were also encountered by the Contractor who failed to follow its proposed construction schedule.

After extensive negotiation between LVMWD staff and the Contractor, an agreement was reached that each party would forgo claims associated with Liquidated Damages due to delays. Change Order #5 was administratively approved with \$0 and an extension of the contract completion date by 212 calendar days. As of December 31, 2010, the project was substantially completed. It is appropriate at this time to file the Notice of Completion, make the final payment and release retention as stipulated in the contract.

RECOMMENDATION(S):

Ratify Change Order #5 in the amount of \$0 and an extension of the completion date by 212 calendar days; approve the last progress payment in the amount of \$13, 923.93; approve the execution of a Notice of Completion by the Secretary of the Board for and on behalf of the District and have the same recorded; and that in the absence of claims from subcontractors and others, release retention in the amount of \$80,884.61 thirty calendar days after filing the Notice of Completion for the Twin Lakes Pump Station Expansion Project.

FINANCIAL IMPACT:

This project is funded through CIP Work Order Account 10191 with a budget of \$2,245,080. Final costs are as follows:

Project Budget	\$2,245,080.00
Design Costs	\$311,326.00
Construction Contract	\$808,804.05
Services During Construction	\$113,629.95

ITEM 7C

Inspection/Project Mgmt/Administration	\$169,516.00
G&A	\$246,191.00
Total Project Cost	\$1,649,467.00

Prepared By: John Zhao, Principal Engineer

ATTACHMENTS:

[Notice of Completion](#)

RECORDING REQUESTED BY

Las Virgenes Municipal Water District

AND WHEN RECORDED MAIL TO

Name Carol Giroto
Street Address Las Virgenes Municipal Water District
City & State 4232 Las Virgenes Road
Zip Calabasas, CA 91302

SPACE ABOVE THIS LINE FOR RECORDER'S USE

T 420 LEGAL (9-94)

Notice of Completion

NOTICE IS HEREBY GIVEN THAT:

- 1. The undersigned is the owner of the interest or estate stated below in the property hereinafter described.
2. The full name of the undersigned is Las Virgenes Municipal Water District (NAME).
3. The full address of the undersigned is 4232 Las Virgenes Road, Calabasas, CA 91302

(NUMBER AND STREET, CITY, STATE, ZIP).

- 4. The nature of the title of the undersigned is (E.G., owner in fee OR vendee under contract of purchase OR lessee OR OTHER APPROPRIATE DESIGNATION).
5. The full names and full addresses of all persons, if any, who hold title with the undersigned as joint tenants or as tenants in common are:

N/A

- 6. The names of the predecessors in interest of the undersigned, if the property was transferred subsequent to the commencement of the work of improvement herein referred to are (OR IF NO TRANSFER WAS MADE, INSERT THE WORD "none"):

N/A

- 7. A work of improvement on the property hereinafter described was completed on March 22, 2011 (DATE).
8. The name of the original contractor, if any, for the work of improvement was PCI/Mvers Joint Venture (NAME OF CONTRACTOR, OR IF NO CONTRACTOR FOR THE WORK OF IMPROVEMENT AS A WHOLE, INSERT THE WORD "none"). [IF NOTICE COVERS COMPLETION OF CONTRACT FOR ONLY PART OF THE WORK OF IMPROVEMENT, ADD: The kind of work done or material furnished was (GIVE GENERAL STATEMENT, E.G., furnishing of concrete for sidewalks).
9. The property on which the work of improvement was completed is in the City of Chatsworth, County of Los Angeles, State of California, and is described as follows: Twin Lakes Pump Station Expansion Project (set forth description of jobsite sufficient for identification, using legal description if possible).
10. The street address of the said property is End of Devonshire in Chatsworth (NUMBER AND STREET, OR, IF THERE IS NO OFFICIAL STREET ADDRESS, INSERT THE WORD "none".)

Dated: March 22, 2011

(SIGNATURE)
Charles P. Caspary (TYPED NAME)

VERIFICATION

I, the undersigned, say:
I am the person who signed the foregoing notice. I have read the above notice and know its contents, and the facts stated therein are true of my own knowledge.

I declare under penalty of perjury that the foregoing is true and correct.

Executed at Calabasas, California, this 22 day of March, 2011

(SIGNATURE)
Charles P. Caspary, Secretary

DO NOT RECORD

Recommended Procedure in the Preparation of a Notice of Completion

A notice of completion must be filed for record *within 10 days* after completion of the work of improvement (to be computed exclusive of the day of completion), as provided in section 3093, Civil Code.

The "owner" who must file for record a notice of completion of a building or other work of improvement means the owner (or his successor in interest at the date of notice is filed) on whose behalf the work was done, though his ownership is less than the fee title. For example, if A is the owner in fee, and B, lessee under a lease, causes a building to be constructed, then B, or whoever has succeeded to his interest at the date the notice is filed, must file the notice.

If the ownership is in *two or more persons as joint tenants or tenants in common*, the notice may be signed by any one of the co-owners (in fact, the foregoing form is designed for giving of the notice by only one co-tenant), but the names and addresses of the other co-owners must be stated in paragraph 5 of the form.

In paragraphs 3 and 5, the full address called for should include street number, city, county and state.

As to paragraph 6, insert the date of completion of the work of improvement as a *whole* if applicable. However, if the notice is to be given only of completion of a particular contract, where work of improvement is made pursuant to two or more original contracts, strike the words "a work of improvement" and insert a general statement of the kind of work done or materials furnished pursuant to such contract (e.g. "The foundations for the improvements").

If the notice is to be given as a notice of completion of the work of improvement as a *whole*, insert the name of the prime contractor, if any, in paragraph 7. No contractor's name need be given if there is no general contractor, e.g., on so-called "owner-builder jobs". However, if the notice is to be given only of completion of a particular contract, where work of improvement is made pursuant to two or more original contracts, insert the name of the contractor who performed that particular contract.

Paragraph 8 should be completed only where the notice is signed by a successor in interest of the owner who caused the improvement to be constructed.

In paragraph 9, insert the *full legal* description, not merely a street address or tax description. Refer to deed or policy of title insurance. If the space provided for description is not sufficient, a rider may be attached.

In paragraph 10, show the street address, if any, assigned to the property by any competent public or governmental authority.

**NOTICE
OF COMPLETION**

CHICAGO TITLE COMPANY



WESTERN DIVISION HEADQUARTERS
245 S. LOS ROBLES AVENUE, SUITE 105
PASADENA, CALIFORNIA 91101-2820
(818) 432-7600

CHICAGO TITLE COMPANY





March 22, 2011 LVMWD Regular Board Meeting

TO: Board of Directors

FROM: Facilities & Operations

Subject: Vehicle Replacement Program Purchase Fiscal Year 2010-11: Award of Bid for Dump Truck

SUMMARY:

On February 8, 2011, the Board authorized the bid schedule and Notice Inviting Bids for the purchase of a dump truck to replace Vehicle 149. Bids were advertised and one sealed bid was returned and opened on Monday, February 28, 2011. The bid, from Gibbs International Truck Centers, was in the amount of \$97,715.59. The initial estimate for the purchase of a replacement dump truck was \$103,000.00.

RECOMMENDATION(S):

Authorize the General Manager to issue a purchase order for the purchase of a new dump truck to Gibbs International Trucks in the amount of \$97,715.59.

FINANCIAL IMPACT:

Work order 10447, Fiscal Year 2010-11 Vehicle Replacement Program, has a budget of \$110,000.00.

Prepared By: Larry J. Miller, Water Systems and Facilities Manager



March 22, 2011 LVMWD Regular Board Meeting

TO: Board of Directors

FROM: Resource Conservation & Public Outreach

Subject: AMR/AMI Installation Project: Purchase of Meter Covers, Lids and Boxes

SUMMARY:

The FY 2010/2011 AMR/AMI Installation Project in the Capital Improvement Program allocated funds to replace the meter covers and lids, and if necessary the meter boxes at the same time as the AMR/AMI equipment is being installed. The new covers and lids are manufactured to accommodate the Firefly unit and provide optimum transmission of the meter reading signal from one meter to the next or directly to a laptop computer. Amorcast Products Company is a sole source.

RECOMMENDATION(S):

Authorize the General Manager to waive formal bidding requirements and to issue a purchase order to Amorcast Products Company in an amount not to exceed \$136,749.05.

FINANCIAL IMPACT:

Meter covers and lids will be charged to Job No. 10450.1880.505 as they are customized for the AMR/AMI installation. Meter boxes will be charged Account No. 701224.5510 which funds the replacement of damaged units. Quantities for this order are 2,850, 11,000 and 250 pieces of covers, lids and boxes, respectively.

Parts will be ordered into inventory as needed. Exact quantities are unknown and will be determined as field inspections are completed in each phase of the project.

Prepared By: Carol Palma, Customer Service Manager



March 22, 2011 LVMWD Regular Board Meeting

TO: Board of Directors

FROM: Resource Conservation & Public Outreach

Subject: Public Outreach for the Draft Urban Water Management Plan

SUMMARY:

On April 12, 2011, staff will present the draft Urban Water Management Plan (UWMP) to the Board, seek approval to release the document for public review and set a date for its adoption. The draft Plan includes the compliance target to meet the Water Conservation Act of 2009 (20x2020). For cities and counties in the service area, the UWMP regulations require a 60-day review prior to adoption. In addition, staff will also present the outreach efforts to disseminate the draft Plan to the public and solicit input from the Board as to the extent of these notifications.

RECOMMENDATION(S):

Provide direction to staff as necessary.

Prepared By: Carlos Reyes, Director of Resource Conservation and Public Outreach



March 22, 2011 LVMWD Regular Board Meeting

TO: Board of Directors

FROM: Resource Conservation & Public Outreach

Subject: Water Shortage Update - February 2011

SUMMARY:

Attached is the Allocation Update from Metropolitan Water District. Through seven months of the current water year, the District is 11% below its allocation compared to 10% last year. The region is currently 27% below its overall allocation for the same period.

Prepared By: Carol Palma, Customer Service Manager

ATTACHMENTS:

[MWD Water Supply and Allocation Update February 2011](#)



THE METROPOLITAN WATER DISTRICT
OF SOUTHERN CALIFORNIA

Office of the General Manager

March 3, 2011

Mr. John Mundy
General Manager
Las Virgenes Municipal Water District
4232 Las Virgenes Road
Calabasas, CA 91302

Dear Mr. Mundy:

Metropolitan's Water Supply Allocation Plan
Information and Water Delivery Update through February 2011

The Metropolitan Water District of Southern California (Metropolitan) implemented its Water Supply Allocation Plan (WSAP) on April 13, 2010 at a Level 2 for the period of July 1, 2010 through June 30, 2011. A key aspect of the WSAP implementation is to maintain an ongoing information exchange between Metropolitan and its member agencies on water use and other factors that may affect final allocations. This letter provides an update of Metropolitan water deliveries and other information related to the WSAP for the month of February 2010. The figures in this letter are only intended to be an indicator of your water use relative to the WSAP. On December 14, 2010, the Metropolitan Board approved an amendment to the 2010/11 Water Management Program to facilitate the purchase of full-service rate supplies by member agencies. Purchases under the amended 2010/11 Water Management Program are not tracked in this letter and are not counted against the 2010/11 WSAP allocation. The Metropolitan Board of Directors will consider whether to implement a WSAP allocation for the upcoming 2011/12 fiscal year at its board meeting on April 12, 2011.

As of February 28, 2011, cumulative metered deliveries to your agency including firm, IAWP, CUP production, and wheeled water totaled:

- 12,830 acre-feet
- An estimated 0 acre-feet of the deliveries shown above are from CUP production.

Through eight months of the twelve month allocation period, the total deliveries expected for your agency to date are expected to total:

- 14,446 acre-feet

Mr. John Mundy
Page 2
March 3, 2011

At this point in the allocation year, the cumulative deliveries to your agency are:

- 11 percent less than expected

For your reference, the combined regional total deliveries in the same period were

- 1,041,489 acre-feet, which is approximately 27 percent less than expected

Please note that in the interest of providing you with timely information, the most recent month's metered delivery data is based on raw meter reads and have not been reconciled for any billing adjustments (such as inter-agency agreements). Each month's letter will likely provide reconciled billing figures for previous months, and therefore may be updated from those in previous letters.

A number of different factors, such as the monthly pattern and actual local supply production, may be leading to the differences between water deliveries and the WSAP baseline. For your information and reference, attached to this letter are graphs and tables showing monthly and cumulative information, a display of the estimated monthly delivery pattern, a table of your agency's estimated local supply production for the allocation year, and a table indicating whether or not your agency has requested various credits and adjustments within the WSAP. All of the credits and adjustments shown in the table are optional, and some may not apply to your agency; the purpose of the table is to provide an inventory of the credits and adjustments that are included in the calculation of your agency's allocation.

Your agency's local production is the critical component in determining the final WSAP allocation for your agency. In this light, please make sure to review the local supply estimates provided with this letter. Also, as a reminder if your agency is operating a Metropolitan Conjunctive Use Program, please provide estimates that separate Conjunctive Use Program production from other local groundwater production. This will help Metropolitan avoid any double-counting of groundwater production when estimating local supplies and WSAP allocations.

The following are some key implementation aspects of the WSAP for your information:

- Metropolitan's WSAP is being implemented at a Level 2.
- Implementation is effective from July 1, 2010 through June 30, 2011.
- Previously granted WSAP appeals, optional credits, and adjustments will be carried over from 2009/10 unless they were specific to that allocation year.
- Penalties for overuse will be calculated and due at the completion of the allocation year ending June 30, 2011.
- Penalty rates will be based on a multiple of the Untreated Tier 2 rate in effect July 1, 2011 (\$652/AF).
- Penalties, if applicable, will be spread over three monthly billings beginning with the August 2011 invoice.

Mr. John Mundy

Page 3

March 3, 2011

- Metropolitan will provide monthly tracking reports throughout the Allocation Year, however penalty rates and charges will only be assessed to the extent that an agency's total annual usage exceeds its total annual allocation.
- Final WSAP allocations for each agency will be based on a final local supply production certification.

Please note the last bullet point listed above. The final Metropolitan allocation to each agency will be based on actual local production during the Allocation Year. Each member agency will be expected to certify their local production following the completion of the WSAP Allocation Year. As the allocation year continues to unfold, it is anticipated that there will be changes in actual local supply production for the member agencies, and that the final Metropolitan supplies allocated will differ accordingly. We will continue to collaborate with you and your staff to provide updated estimates that result from any changes in local supply production as they happen. This is an important aspect of the WSAP to be aware of because any penalties assessed will be based on final certified local supply production.

WSAP Review Meeting, March 10, 2011

When the Metropolitan Board of Directors adopted the WSAP in February 2008, it directed Metropolitan staff to conduct a review of the WSAP three years later to consider improvements to the plan. Accordingly, Metropolitan is conducting the 3-year WSAP Review process with the member agencies. The purpose of the review process is to collaborate with member agencies to identify potential modifications to the WSAP and to recommend changes, if any, for board consideration. The first meeting of the WSAP Review process was held on February 23, 2011.

The next WSAP Review workshop is scheduled for March 10, 2011, from 9:30 to 11:30 in Room 2-145 at Metropolitan's Headquarters located at Union Station. The topic of local supplies will be first issue for workgroup discussion. Where feasible, submittal of your WSAP-related questions to Metropolitan staff in advance of the meeting is much appreciated. Allowing staff opportunity to prepare analyses beforehand will be to the benefit of all workshop participants. For those unable to attend in person, a conference call line will be available. The call-in number is (213) 217-7888, and the pass code is 6053#.

Please RSVP to Mr. David Sumi of my staff at dsumi@mwadh2o.com. We look forward to your participation.

Mr. John Mundy
Page 4
March 3, 2011

Metropolitan has also set aside the following dates and times for future Member Agency Managers meetings on the WSAP Review as needed.

- March 25, 1:30-3:30, Metropolitan HQ
- April 8, 1:30-3:30, Metropolitan HQ
- April 27, 1:30-3:30, Metropolitan HQ

Revised WSAP Handbook on Member Agency website

To aid your preparation for this meeting, a copy of the current WSAP is posted on the Member Agency website for your review. The current WSAP reflects modification to the WSAP formula approved by the Metropolitan Board of Directors in August 2010 that went into effect for the 2010/11 allocation year. Contact David Sumi at dsumi@mwdh20.com for any questions about obtaining the handbook.

If you have any questions please feel free to call me at 213-217-7384.

Very truly yours,



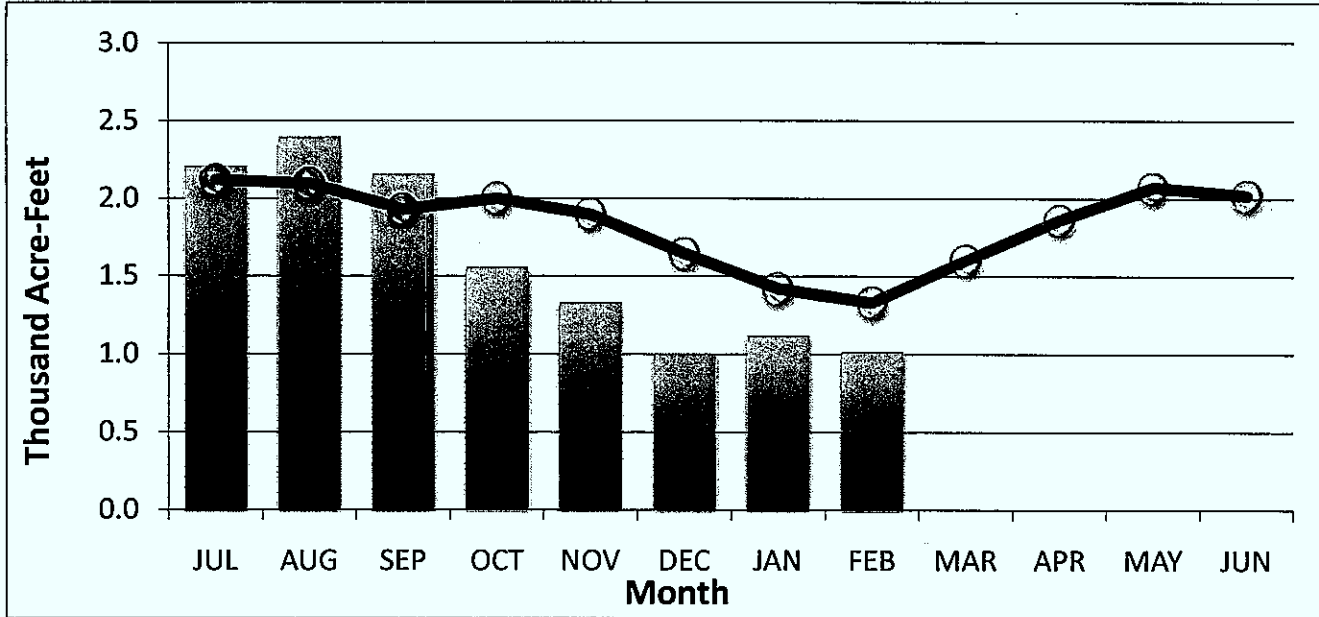
Brandon J. Goshi
Manager, Resource Analysis

BJG:tt

Enclosure

**2010-11 Water Supply Allocation Tracking: Las Virgenes MWD
For the Period Ending February 28, 2011**

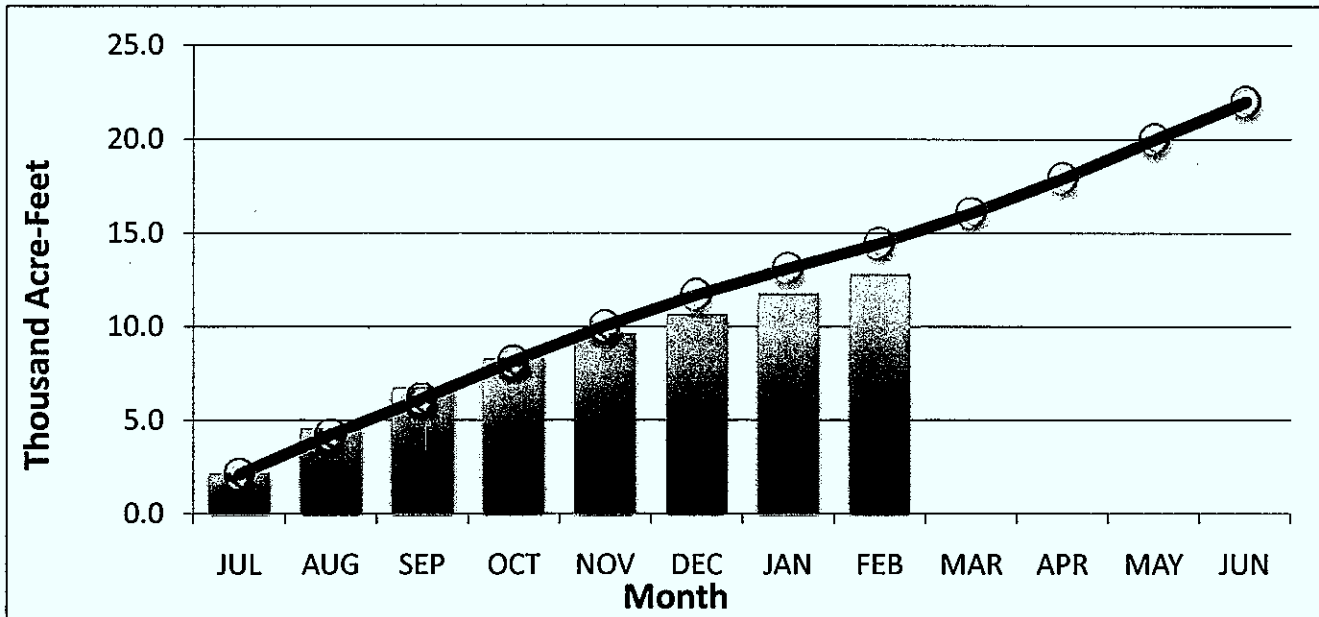
Monthly Deliveries vs. WSAP Allocation



	JUL	AUG	SEPT	OCT	NOV	DEC
WSAP Allocation*	2,119	2,096	1,930	2,002	1,898	1,648
Actual Deliveries**	2,213	2,399	2,162	1,562	1,340	1,009

	JAN	FEB	MAR	APR	MAY	JUN
WSAP Allocation*	1,421	1,332	1,604	1,863	2,073	2,021
Actual Deliveries**	1,123	1,022				

Cumulative Deliveries vs. WSAP Allocation



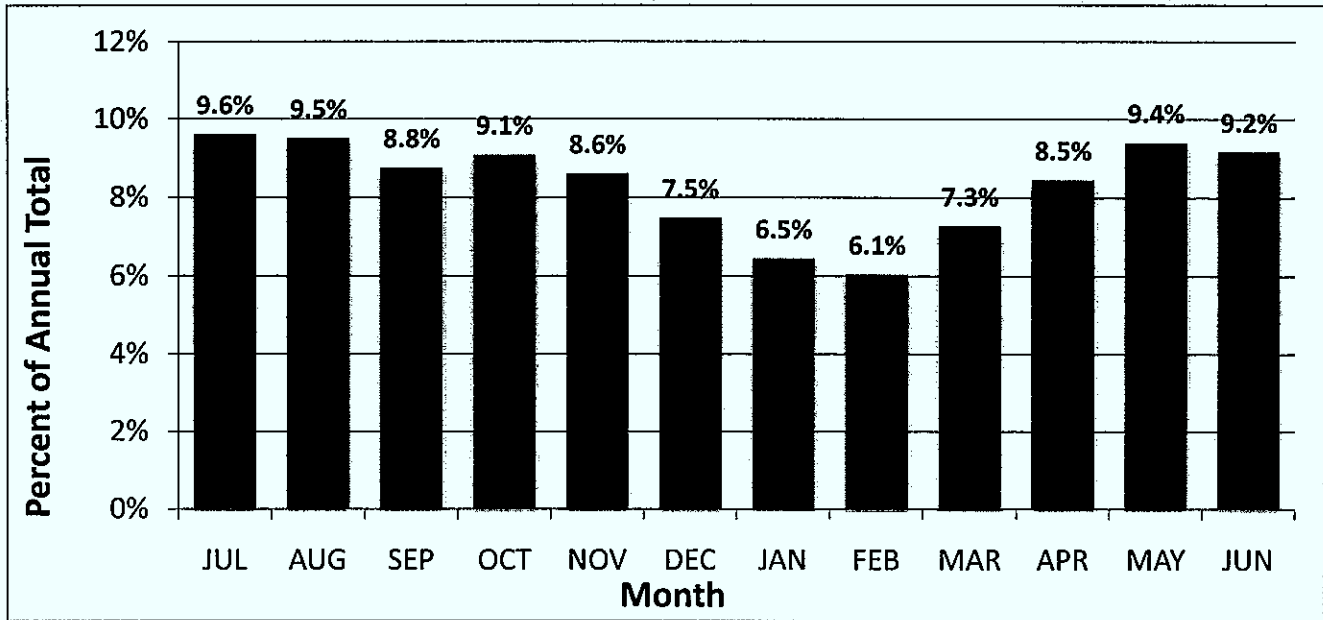
	JUL	AUG	SEPT	OCT	NOV	DEC
WSAP Allocation*	2,119	4,215	6,145	8,147	10,045	11,693
Actual Deliveries**	2,213	4,612	6,774	8,336	9,675	10,685

	JAN	FEB	MAR	APR	MAY	JUN
WSAP Allocation*	13,114	14,446	16,050	17,913	19,986	22,007
Actual Deliveries**	11,808	12,830				

*Allocation includes WSAP, Seawater Barrier, IAWP, and Wheeling
 **Deliveries includes Firm, Seawater Barrier, CUP Sales, Wheeling, and IAWP

**2010-11 Water Supply Allocation Tracking: Las Virgenes MWD
For the Period Ending February 28, 2011**

Monthly Delivery Pattern



Allocation Year Local Supply Estimates

Supply Type	Acre-Feet
Groundwater	-
Groundwater Recovery	-
Los Angeles Aqueduct	-
Surface Production	-
Other	122
Extraordinary Production	-
Total	122

Optional Allocation Year Credits and Adjustments

Credit/Adjustment	Status
Conserving Rate Structure	Complete
Agency Funded Conservation Savings	Not Submitted
Agency Level Growth Rate	Not Submitted
Allocation Year Local Supply Estimate	Complete
Included 2010-11 Appeals	None
Minimum Per-Capita Water Use	Not Submitted
Agency Generated Delivery Pattern	Not Submitted