



Las Virgenes-Triunfo JPA Demonstration Garden Project

Presented by:

Marilee Kuhlmann, Principal

Tom Rau ASLA, Principal

www.urbanwatergroup.com

URBAN WATER GROUP

Drought Resilient Landscapes



Design Objectives:

“Gaining a Clear Perspective on Outdoor Water Use”

Provide examples of:

Medium, Low and Very Low Water-Use Plantings

Storm Water Harvesting

Rain Gardens

Permeable Pavements

Drip Irrigation and Smart Controller

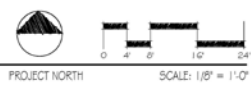
Inspire homeowners to implement these ideas in their own yards to reduce outdoor water use





LEGEND	
REV	NOTE, DESCRIPTION
1	30" GARDEN BEDS MOUNTED ON BRICK AT THE LEVEL TO BE USED FOR PLANTING THE VARIOUS SPECIES OF WATER SAVINGS AVAILABLE IN THE RAINFOREST GARDEN BEDS.
2	WISFOR ARRIVAL PLUGS FOR SEED OR DOCKETS LAD TOURS
3	LOW WATER-USE TURF ALTERNATIVES: CAREX, TURFA, DIMONDA, ETC.
4	BOULDERS FOR SITTING
5	STORAGE PAVES: COVERS OF IMPROVED WATER, IMPORTANCE OF REDUCING OUTDOOR WATER CONSUMPTION, ETC.
6	BRICKING OFF SPITTLE TO KISSAN
7	BOUNDER ROSE TO DEMONSTRATE HOW TO KEEP BRASS TREES WITH OTHER BRASS PLANTS IN RAIN GARDENS AND OTHERS
8	PERMANENTLY OPEN DRAINAGE TRENCHES TO BE USED TO COLLECT RAINFALL. NUMBER OF DRAINS EQUALS TO HIGHPOINT AND LOWPOINT
9	POSTING DEMONSTRATION TO BE USED TO DEMONSTRATE RAIN GARDENS AND OTHERS
10	DRAINFALL OF RAIN GARDENS AND OTHERS
11	4" WIDE DECOMPOSED GRANITE PATHWAY
12	OVERFLOW DRAINS STORMWATER TO RAIN GARDEN
13	RAIN GARDEN
14	RAIN GARDEN OVERFLOW TO STREET
15	NEED OF WATER USE PLANTING VIGNETTES: RAIN GARDEN PLANTS, TURF ALTERNATIVES, FLOWERS, PERENNIALS
16	DECOMPOSED WATER USE PLANTING VIGNETTES: CALIFORNIA NATIVE, AUSTRALIAN, MEDITERRANEAN
17	LOW WATER-USE PLANTING VIGNETTES: CALIFORNIA NATIVE, SOUTH AFRICAN, SUCCESSION
18	LOW WATER-USE PLANTING VIGNETTES TO WATER WHEN INSTALLED: CALIFORNIA NATIVES AND SUCCESSION
19	LOW WATER-USE PLANTING VIGNETTES TO PROTECT VISUAL INTEREST: C. CONDOLIA, ANIMAL, S.I. SLOPE MAXIMUM, TYPICAL
20	NATIVE SHADE TREE: QUERCUS AGRIFOLIA, ARBUSTUS MARINA
21	NATIVE FLOWERING PLANTING TREE: CROCOPUS CUCULIS
22	NON-TROPICAL BURNING RESISTANT: AEROLICUS
23	SPACED REDUCED CONCRETE SEAT WALL: DRAINAGE TYPICAL
24	POND: TABLE
25	POSTS AND TENSION BRACE FOR OVERHEAD SHADE BALL, TYPICAL
26	ROCK AND STONE: PORTLAND-REPAIRS: ARBUSTUS MARINA, PHELUS AGRIFOLIA, VITIS CALIFORNICA, ROGERS RED
27	SPECIMEN SUCCESSION TREE: ALICE-HERCULES, ALICE BANGS
28	HIGHPOINT WATER-USE PLANTING VIGNETTES: RAINFALL, MOST
29	SPACED AND DIMENSIONAL SCALE TREES AND REDUCING WATER FLOW
30	LOW WATER-USE PLANTING VIGNETTES: COLUMBIA AND FLOWERING
31	BRICKING COMMONWEALTH OAK
32	DRY WOODLAND AND UNDERSTORY PLANTING VIGNETTES: CALIFORNIA NATIVES
33	ROCK GARDEN/RENCH DRAIN TO INFILTRATE TERRACE RAFFO
34	PERMANENTLY OPEN DRAINAGE TRENCHES TO DEMONSTRATE DRAINAGE, RESISTANCE, FLOWERS, PLANT MATERIALS, GRAVEL WITH EUCALYPTUS, D.I.P.
35	PERMANENT SHADE GARDEN
36	NEW STOOD SITTING AREA
37	BRICKING OFF SPITTLE: NATIVE SHRUBS TO REMAIN: CROCOPUS, BACCHARIS, TO BE SURVIVED
38	INTERPRETIVE SIGNAGE PANEL, TYPICAL
39	CALIFORNIA WILDOFLOWER MEADOW
40	CALIFORNIA NATIVE FLOWERING AND HABITAT PLANTINGS
41	SPACED REDUCED CONCRETE (URBAN) RETAINING WALL: SEAT WALL
42	CONCRETE RETAINING WALL
43	RELOCATE SOME OF ALL OF EXISTING BOULDERS FOR REUSE AS RETAINING WALLS AND DECORATIVE COORAL TREATMENTS
44	WIDE GRANITE PATHWAY WITH BOULDERS FOR SEATING AT SEATING AREAS
45	EXISTING OAKS AND TOWN TO REMAIN, TYPICAL
46	EXISTING BOULDERS, KEEP IN PLACE OR RELOCATE AS NEEDED
47	NEW 48" WIDE CONCRETE BRUSH
48	NEW TRENCH: DRAIN
49	PATCH ASPHALT AT END OF DRIVEWAY AND PROVIDE CURB
50	2" WIDE LANDSCAPE TIMBERS AND DECOMPOSED GRANITE PATHWAY
51	LANDSCAPE TIMBER STEPS WITH HANDRAIL
52	BENCH
53	TIE TRENCH DRAIN INTO EXISTING STORM DRAIN TO STREET
54	INTERCEPT EXISTING STORM DRAIN AND DIVERT TO RAIN GARDEN
55	OVERFLOW TO BRUSH
56	NEW ADA ACCESSIBLE RAMP AT CURB
57	WATERWAY BRIDGES TYPICAL FOR DEMONSTRATION OF IRRIGATION, MAINTENANCE, COMPOSTING, ETC.
58	EXISTING CONCRETE BRUSH
59	2" WIDE LANDSCAPE TIMBERS WITH ANCHOR FOOTING
60	SHADE TREE, TYPICAL

1 OVERALL SITE PLAN
 CONCEPT A: "GAINING A CLEAR PERSPECTIVE ON REDUCING OUTDOOR WATER USE"



URBAN WATER GROUP
 Drought-Resilient Landscapes
 746 S. LOS ANGELES STREET SUITE 610
 LOS ANGELES, CA 90014
 424.262.4894 urbanwatergroup.com

LAS VIRGENES MUNICIPAL WATER DISTRICT-TRIUNFO IFA
PURE WATER DEMONSTRATION PROJECT
 4332 LAS VIRGENES ROAD
 CALABASAS, CA 91302-1994

Rev			
1			
2			
3			
4			

Sheet Title:
**CONCEPT A:
 OVERALL SITE
 PLAN**

Date: 4/20/18
 Scale: As Noted
 Project Number:
 Revision: Final Schematic Design

Sheet Number:
L-0.1



LEGEND	
KEY	NOTE, DESCRIPTION
1	10" GATE VALVE MOUNTED ON BRACK AT THE CURB TO BE USED FOR FILLING THE VARIOUS LEVELS OF WATER SAVINGS ACHIEVABLE IN THE SMALLER GREEN SPACES.
2	WATER AERIAL PLANT FOR SEED OR COEXIST-LED TUBS
3	LOW WATER-USE TURF ALTERNATIVES: CAREX, TURFRIA, DIVISIONA, ETC.
4	BOULDERS FOR SITTING
5	ORAGE PAVES: COIRS OF IMPROVING WATER, IMPROVAGE OF REDUCING OUTDOOR WATER CONSUMPTION, ETC.
6	SHADING COVER WANTED TO REMOVE
7	SHADE POSE TO DEPENDENCE FOR TO DEEP WATER TREES WITH THINER WATER COLLECTOR IN RAIN GARDEN AND COEXISTING PLANTINGS TO PROVIDE TENDER PROTECTED RAIN GARDEN OF SHADY GARDEN FOOT, NUMBER OF DEEP SOLATED TO HIGHLY MAINTAIN USE
8	SHEDDING CONDUIT TO BE USED TO DEPENDENCE ON RAIN GARDEN AND COEXISTING
9	SHEDDING CONDUIT TO BE USED TO DEPENDENCE ON RAIN GARDEN AND COEXISTING
10	SHEDDING CONDUIT TO BE USED TO DEPENDENCE ON RAIN GARDEN AND COEXISTING
11	SHEDDING CONDUIT TO BE USED TO DEPENDENCE ON RAIN GARDEN AND COEXISTING
12	SHEDDING CONDUIT TO BE USED TO DEPENDENCE ON RAIN GARDEN AND COEXISTING
13	RAIN GARDEN
14	RAIN GARDEN OVERFLOW TO STREET
15	MEDIUM WATER-USE PLANTING VARIETIES: RAIN GARDEN PLANTS, TURF ALTERNATIVES, PLANTING FRESHWATER
16	MEDIUM WATER-USE PLANTING VARIETIES: CALIFORNIA NATIVE, AUSTRIAN WINTERHARDY
17	LOW WATER-USE PLANTING VARIETIES: CALIFORNIA NATIVE, SOUTH CALIFORNIA SUCULANTS
18	SHEDDING CONDUIT TO BE USED TO DEPENDENCE ON RAIN GARDEN AND COEXISTING PLANTINGS TO PROVIDE TENDER PROTECTED RAIN GARDEN OF SHADY GARDEN FOOT, NUMBER OF DEEP SOLATED TO HIGHLY MAINTAIN USE
19	SHEDDING CONDUIT TO BE USED TO DEPENDENCE ON RAIN GARDEN AND COEXISTING
20	NATIVE SHADE TREE: QUERCUS AGROBOLIA, MOUTUS VARIETA WATER TOLERANCE TENDER TREE OVERHEAD COEXISTING, LONGEVITY, SUCULANTS, SOUTH CALIFORNIA SUCULANTS
21	SHEDDING CONDUIT TO BE USED TO DEPENDENCE ON RAIN GARDEN AND COEXISTING PLANTINGS TO PROVIDE TENDER PROTECTED RAIN GARDEN OF SHADY GARDEN FOOT, NUMBER OF DEEP SOLATED TO HIGHLY MAINTAIN USE
22	SHEDDING CONDUIT TO BE USED TO DEPENDENCE ON RAIN GARDEN AND COEXISTING
23	SHEDDING CONDUIT TO BE USED TO DEPENDENCE ON RAIN GARDEN AND COEXISTING
24	POSTS AND TENSION WIRE FOR OVERHEAD SHADE SAIL, TYPICAL
25	SHEDDING CONDUIT TO BE USED TO DEPENDENCE ON RAIN GARDEN AND COEXISTING
26	SHEDDING CONDUIT TO BE USED TO DEPENDENCE ON RAIN GARDEN AND COEXISTING
27	SHEDDING CONDUIT TO BE USED TO DEPENDENCE ON RAIN GARDEN AND COEXISTING
28	SHEDDING CONDUIT TO BE USED TO DEPENDENCE ON RAIN GARDEN AND COEXISTING
29	SHEDDING CONDUIT TO BE USED TO DEPENDENCE ON RAIN GARDEN AND COEXISTING
30	SHEDDING CONDUIT TO BE USED TO DEPENDENCE ON RAIN GARDEN AND COEXISTING
31	POOL GARDEN/DRY DRAIN TO INFILTRATE TERRACE RAINFALL
32	POWDERED FIBER REINFORCED CONCRETE STABILIZATION, CRACKS, REPAIRS, FILL, FIBER, GRAVIT, WITH FIBER, GRAVIT, ETC.
33	PARTIAL SHADE GARDEN
34	LOG FOOTING AREA
35	EXISTING ESTABLISHED VARIETY SPECIES TO REMOVE EXISTING, BACKWARDS, TO BE SUBSTITUTED
36	INTERPRETIVE SIGNAGE PANEL, TYPICAL
37	CALIFORNIA WOODLAND MEADOW
38	CALIFORNIA NATIVE FOLIATION AND HABITAT PLANTINGS
39	CALIFORNIA NATIVE FOLIATION AND HABITAT PLANTINGS
40	SHEDDING CONDUIT TO BE USED TO DEPENDENCE ON RAIN GARDEN AND COEXISTING
41	SHEDDING CONDUIT TO BE USED TO DEPENDENCE ON RAIN GARDEN AND COEXISTING
42	SHEDDING CONDUIT TO BE USED TO DEPENDENCE ON RAIN GARDEN AND COEXISTING
43	SHEDDING CONDUIT TO BE USED TO DEPENDENCE ON RAIN GARDEN AND COEXISTING
44	SHEDDING CONDUIT TO BE USED TO DEPENDENCE ON RAIN GARDEN AND COEXISTING
45	SHEDDING CONDUIT TO BE USED TO DEPENDENCE ON RAIN GARDEN AND COEXISTING
46	SHEDDING CONDUIT TO BE USED TO DEPENDENCE ON RAIN GARDEN AND COEXISTING
47	SHEDDING CONDUIT TO BE USED TO DEPENDENCE ON RAIN GARDEN AND COEXISTING
48	PATCH ASPHALT AT END OF DRIVEWAY AND PROVIDE CURB
49	3" WIDE LANDSCAPE TIMBERS AND DECOMPOSED GRANITE PATHWAY
50	LANDSCAPE TRIMMER STEPS WITH HANDRAIL
51	SEED
52	THE TRENCH DRAIN INTO EXISTING STORM DRAIN TO STREET
53	INTERCEPT EXISTING STORM DRAIN AND DIVERT TO RAIN GARDEN
54	OVERFLOW TO SHADE
55	NEW ADA ACCESSIBLE RAMP AT CURB
56	WATER-RESISTANT PROTECTIVE FOR DECOMPOSITION OF REGULAR MAINTENANCE, COMPOSTING, ETC.
57	EXISTING CONCRETE SHADE
58	IF MARKET UNAVAILABLE WITH ANCHOR FOOTING
59	SHADE TREE, TYPICAL

1 SOUTH PLANTING BEDS DETAIL PLAN

SEE DETAIL 2 ON SHEET L-0.4 FOR UMBRELLAS AND SHADE TREE ALTERNATIVE



2 SOUTH PLANTING BEDS SECTION/ELEVATION
CONCEPT A: "GAINING A CLEAR PERSPECTIVE ON REDUCING OUTDOOR WATER USE"

URBAN WATER GROUP

Drought Resilient Landscapes
746 S. LOS ANGELES STREET, SUITE 610
LOS ANGELES, CA 90014
424-367-1204 urbanwatergroup.com

Thomas W. Rau,
Landscape Architect
CA Lic. #5581

LAS VIRGENES MUNICIPAL WATER DISTRICT-TRIUNFO JPA
PURE WATER DEMONSTRATION PROJECT
4232 LAS VIRGENES ROAD
CALABASAS, CA 91302-1994

Date:	4/10/18
Version:	Final Schematic Design
Project Name:	
Client Name:	
Site:	
Scale:	
Author:	
Checker:	
Approver:	
Reviewer:	
Designer:	
Coordinator:	
Operator:	
Printer:	

Sheet Title:
CONCEPT A: SOUTH PLANTING BEDS SECTION/ELEVATION AND DETAIL PLAN

Sheet Number:

L-0.2

Lawn Alternatives

- Field Sedge
(*Carex praegracilis*)
 - ✓ Uses 50% less water
 - ✓ Mow or not mow
- Kurapia
(*Phylla nodiflora*)
 - ✓ Uses 75% less water



Medium-Low Water Plants

Natives and Mediterranean



EUPHORIA MYRSINITES



TEUCRIUM MAJORICUM



ACHILLEA 'MOONSHINE'



ACHILLEA MILLIFOLIUM 'ISLAND PINK'



SALVIA 'MARINE BLUE'



SANTOLINA ROSMARINIFOLIA

Low-Very Low Water Plants

Succulents



SENECIO CYLINDRICUS



AGAVE 'JOE HOAK'



AEONIUM 'KIWI'



SENECIO SERPENS



AEONIUM 'JACK CATLIN'



ALOE STRIATA

Low-Very Low Water Plants

California Natives



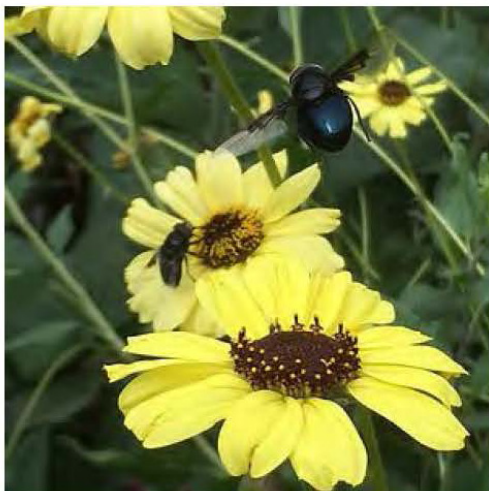
SPHAERALCEA AMBIGUA



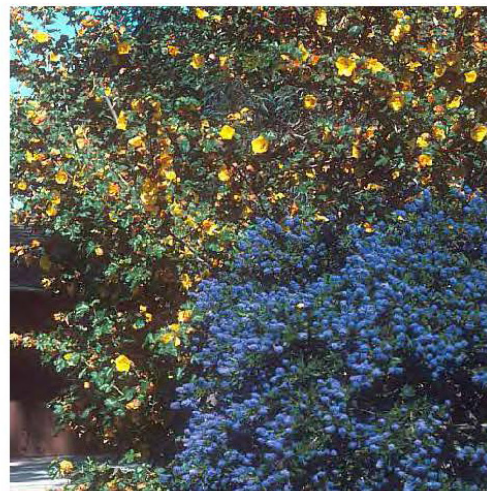
ABUTILON PALMERI



EPIPHYLLUM NEVINII 'CANYON SILVER'



ENCELIA CALIFORNICA 'EL DORADO'



CEANOTHUS 'CONCHA'



ACHILLEA MILLEFOLIUM 'ISLAND PINK'

Rain Garden

- ✓ **Infiltrates** stormwater to reduce irrigation needs
- ✓ **Filters** stormwater overflow before discharging to street

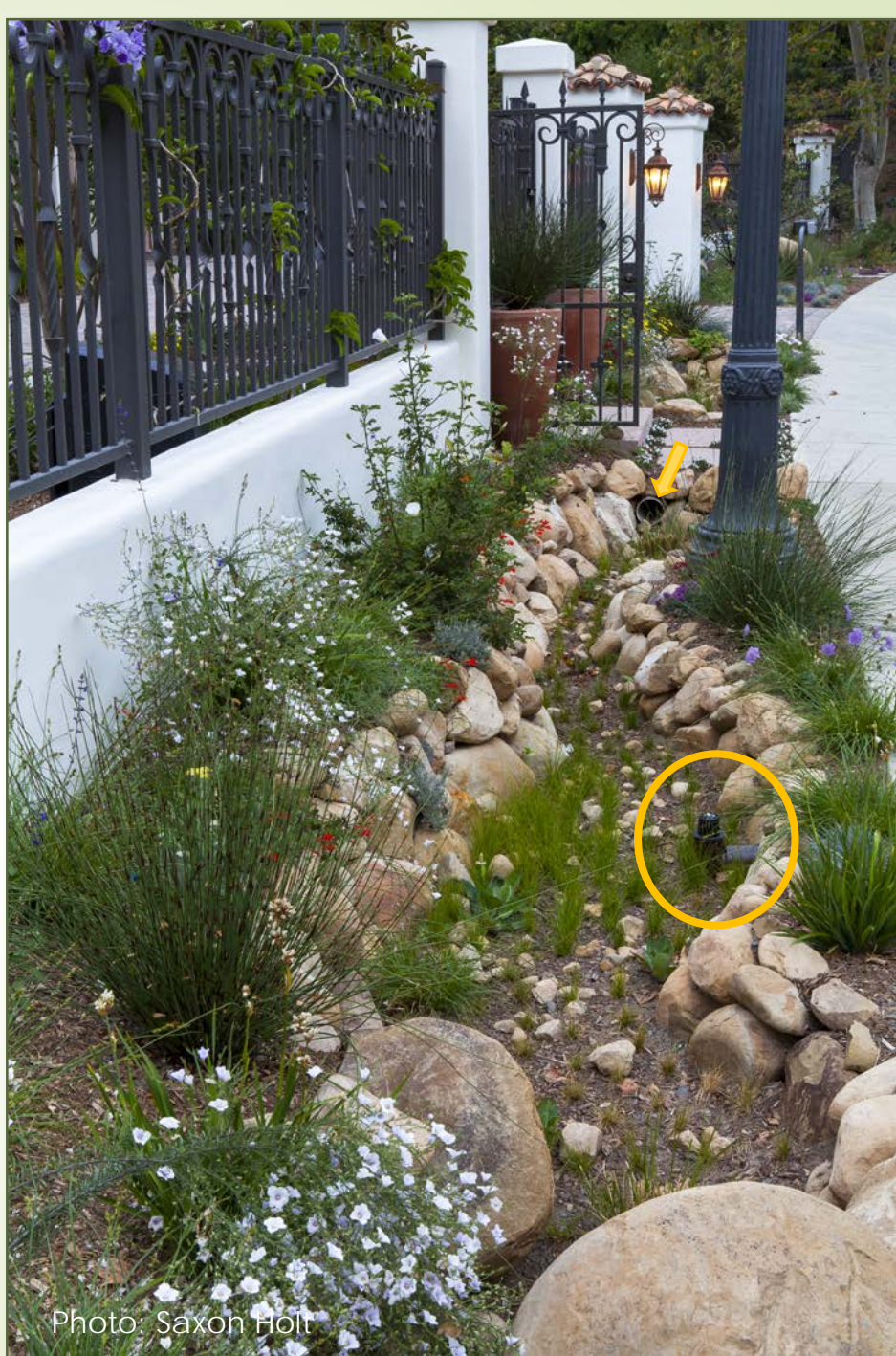


Photo: Saxon Holt

Rain Garden

- ✓ Plants adapted to seasonal **wet and dry** conditions



Photo: Saxon Holt

Rain Tanks

- Capture Roof Water
 - ✓ 620 gallons per inch of rain from 1,000 sf roof
 - ✓ Use to deep water trees with gravity-fed soaker hose
 - ✓ LID compliance
 - ✓ Examples of 55 to 420 gallons



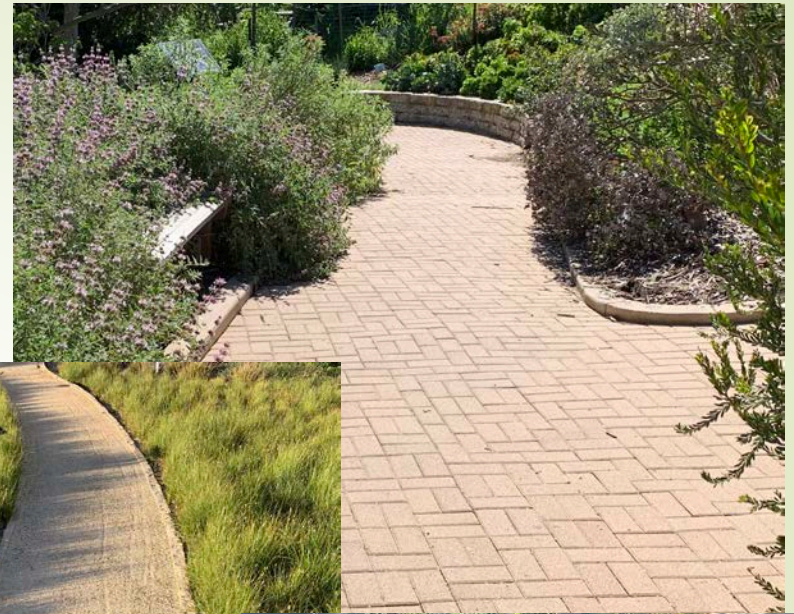
Amphitheater

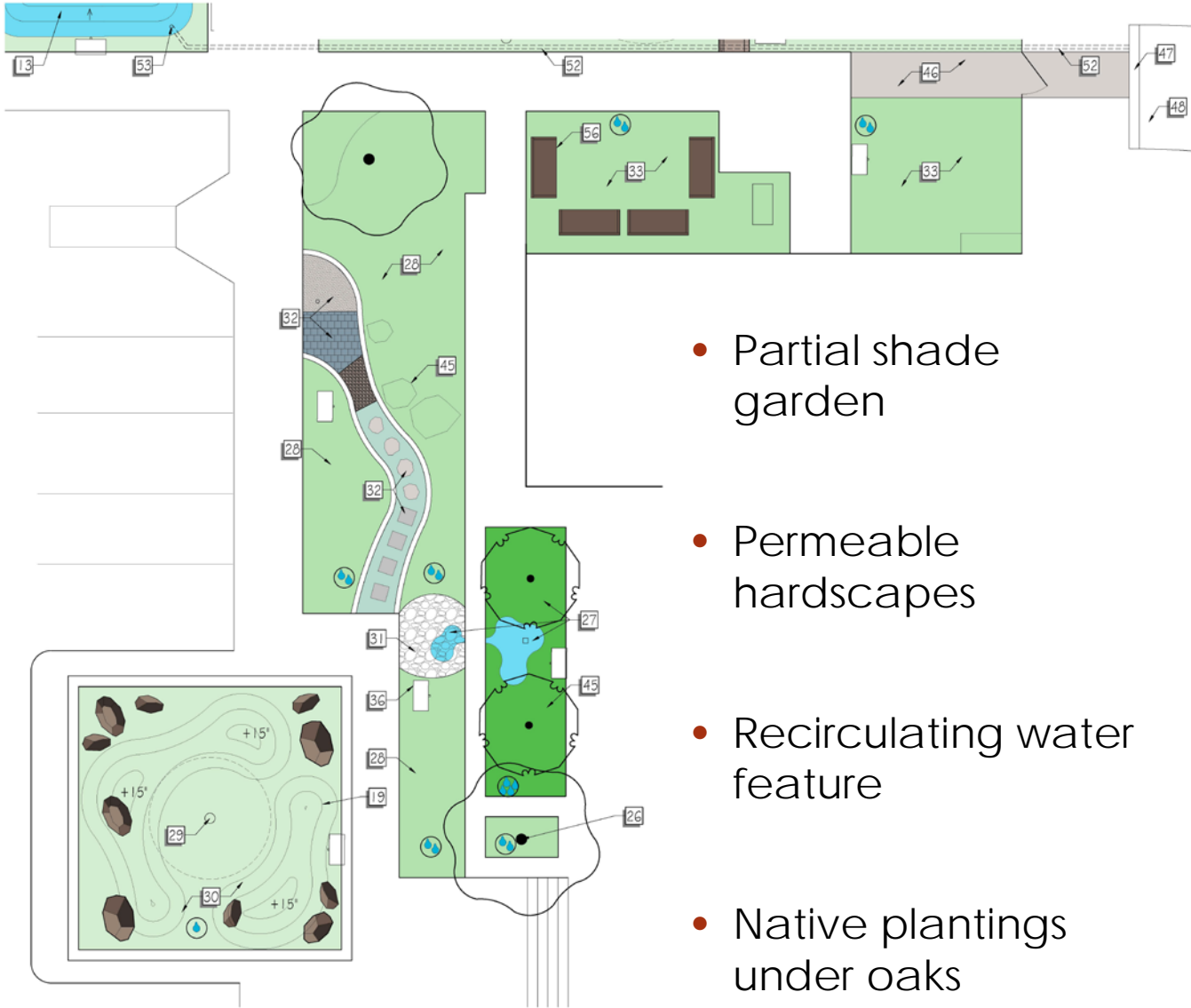
- Teaching and Community Gathering Events
- ✓ Seating for 30 people



Permeable Pavement

- Infiltrate Runoff
 - ✓ Reduces irrigation needs
 - ✓ Prevent site runoff from polluting waterways

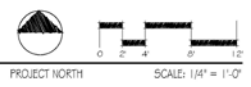




- Partial shade garden
- Permeable hardscapes
- Recirculating water feature
- Native plantings under oaks

LEGEND	
REV	NOTE DESCRIPTION
1	NO SAME VALUE VALUES DISPLAYED AT THE CORNER TO BE USED FOR MEASURING THE VARIOUS DEVICES OF WATER SAVING AS AVAILABLE IN THE BENCH, GARBLE, POTS.
2	WATER MAIN, PUMP FOR SELF OR DOWN-LED TUBS
3	LOW WATER USE "XRF" AERATIVE "CAREY, CURIA, DIVISION, INC.
4	SOULERS FOR SITTING
5	SOULERS PANELS: COVERS OF WAPORING WATER, IMPORTANCE OF REDUCING OUTDOOR WATER CONSUMPTION, ETC.
6	EXISTING OPEN WHILE TO REMAIN
7	SHOWER ROSE TO DEVELOPER NEW TO USE WATER WITH SYSTEM WATER COLLECTED IN RAIN BARRELS AND CISTERNS
8	RECYCLED CULTURAL, EXISTING RECYCLED WATER LEASE OF SANITARY GARDEN PLANT NUMBER OF GROSS SQUARES TO
9	RECYCLED CULTURAL, EXISTING RECYCLED WATER LEASE OF SANITARY GARDEN PLANT NUMBER OF GROSS SQUARES TO
10	EXAMPLES OF RAIN BARRELS AND CISTERNS
11	4" WIDE DECOMPOSED GRANITE PATHWAY
12	OVERFLOW DIRECTS STORMWATER TO RAIN GARDEN
13	RAIN GARDEN
14	RAIN GARDEN OVERFLOW TO STREET
15	MEDIUM WATER USE PLANTING VIGNETTES: RAIN GARDEN PLANTS, TOP TO BOTTOM: CALIFORNIA NATIVE, AUSTRALIAN, MEDITERRANEAN
16	LOW WATER USE PLANTING VIGNETTES: CALIFORNIA NATIVE, SOUTH AMERICAN, BLOSSOMERS
17	LOW WATER USE PLANTING VIGNETTES: TO WATER WHEN BEHIND GARDEN, CALIFORNIA NATIVE AND BLOSSOMERS
18	LOW WATER USE PLANTING VIGNETTES: TO WATER WHEN BEHIND GARDEN, CALIFORNIA NATIVE AND BLOSSOMERS
19	LOW WATER USE PLANTING VIGNETTES: TO WATER WHEN BEHIND GARDEN, CALIFORNIA NATIVE AND BLOSSOMERS
20	WATER SHADE TREE: QUERCUS AGROFOLIA, ARBUTUS MARIANA
21	WHITE FLOERING "FRASER" TREE: CHRYSEIS GIGANTEA, LICHONIA GIGANTEA, SERRAVALLEA GIGANTEA
22	SHADE TREE: QUERCUS AGROFOLIA, ARBUTUS MARIANA
23	SHADE TREE: QUERCUS AGROFOLIA, ARBUTUS MARIANA
24	SHADE TREE: QUERCUS AGROFOLIA, ARBUTUS MARIANA
25	SHADE TREE: QUERCUS AGROFOLIA, ARBUTUS MARIANA
26	SHADE TREE: QUERCUS AGROFOLIA, ARBUTUS MARIANA
27	SHADE TREE: QUERCUS AGROFOLIA, ARBUTUS MARIANA
28	SHADE TREE: QUERCUS AGROFOLIA, ARBUTUS MARIANA
29	SHADE TREE: QUERCUS AGROFOLIA, ARBUTUS MARIANA
30	SHADE TREE: QUERCUS AGROFOLIA, ARBUTUS MARIANA
31	SHADE TREE: QUERCUS AGROFOLIA, ARBUTUS MARIANA
32	SHADE TREE: QUERCUS AGROFOLIA, ARBUTUS MARIANA
33	SHADE TREE: QUERCUS AGROFOLIA, ARBUTUS MARIANA
34	SHADE TREE: QUERCUS AGROFOLIA, ARBUTUS MARIANA
35	SHADE TREE: QUERCUS AGROFOLIA, ARBUTUS MARIANA
36	SHADE TREE: QUERCUS AGROFOLIA, ARBUTUS MARIANA
37	SHADE TREE: QUERCUS AGROFOLIA, ARBUTUS MARIANA
38	SHADE TREE: QUERCUS AGROFOLIA, ARBUTUS MARIANA
39	SHADE TREE: QUERCUS AGROFOLIA, ARBUTUS MARIANA
40	SHADE TREE: QUERCUS AGROFOLIA, ARBUTUS MARIANA
41	SHADE TREE: QUERCUS AGROFOLIA, ARBUTUS MARIANA
42	SHADE TREE: QUERCUS AGROFOLIA, ARBUTUS MARIANA
43	SHADE TREE: QUERCUS AGROFOLIA, ARBUTUS MARIANA
44	SHADE TREE: QUERCUS AGROFOLIA, ARBUTUS MARIANA
45	SHADE TREE: QUERCUS AGROFOLIA, ARBUTUS MARIANA
46	SHADE TREE: QUERCUS AGROFOLIA, ARBUTUS MARIANA
47	SHADE TREE: QUERCUS AGROFOLIA, ARBUTUS MARIANA
48	SHADE TREE: QUERCUS AGROFOLIA, ARBUTUS MARIANA
49	SHADE TREE: QUERCUS AGROFOLIA, ARBUTUS MARIANA
50	SHADE TREE: QUERCUS AGROFOLIA, ARBUTUS MARIANA
51	SHADE TREE: QUERCUS AGROFOLIA, ARBUTUS MARIANA
52	SHADE TREE: QUERCUS AGROFOLIA, ARBUTUS MARIANA
53	SHADE TREE: QUERCUS AGROFOLIA, ARBUTUS MARIANA
54	SHADE TREE: QUERCUS AGROFOLIA, ARBUTUS MARIANA
55	SHADE TREE: QUERCUS AGROFOLIA, ARBUTUS MARIANA
56	SHADE TREE: QUERCUS AGROFOLIA, ARBUTUS MARIANA
57	SHADE TREE: QUERCUS AGROFOLIA, ARBUTUS MARIANA
58	SHADE TREE: QUERCUS AGROFOLIA, ARBUTUS MARIANA
59	SHADE TREE: QUERCUS AGROFOLIA, ARBUTUS MARIANA

1 FRONT ENTRY PLANTING BEDS DETAIL PLAN
 CONCEPT A: "GAINING A CLEAR PERSPECTIVE ON REDUCING OUTDOOR WATER USE"



Rev	By	Date

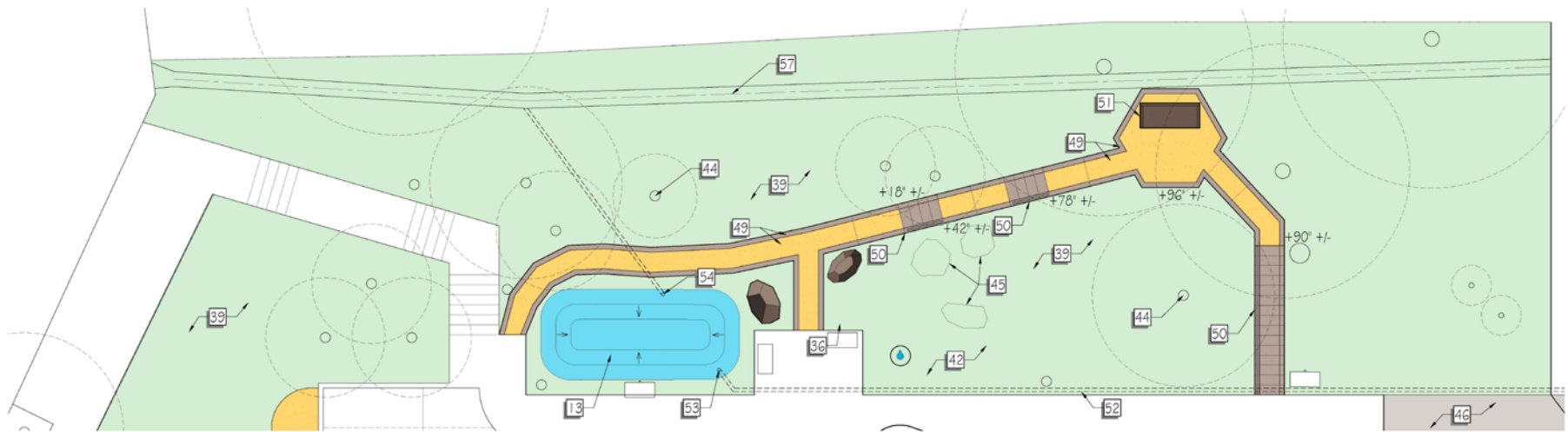
Sheet Title:
**CONCEPT A: FRONT
 ENTRY PLANTING BEDS
 DETAIL PLAN**

Drawn by: [Name]
 Scale: As Noted
 Project Number:
 Version: Final Schematic Design

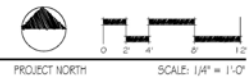
Sheet Number:
L-0.3

- Oak woodland slope plantings
- Drainage improvements
- Rain garden

LEGEND	
REF	NOTE, DESCRIPTION
1	10' GATE VALVE MOUNTED ON BRANCH AT THE CURB TO BE USED FOR
11	INDICATE THE VARIOUS LEVELS OF WATER SAVINGS ACHIEVABLE IN THE
2	WATER AERIAL PLAZA FOR BICYCLE OR COCCO-LED TUBS
3	LOW WATER-USE TURF ADAPTIVES: CAREX, TURFARIA, DRACONIA,
4	BOULDERS FOR SITTING
5	BRIDGE PANELS: COERS OF IMPROVING WATER, IMPROVAGE OF
6	BRIDGE OVER WALKER TO RAIN
7	BRIDGE ROSE TO DECOMPOSTER FOR TO DEEP WATER TREES WITH
8	STORM WATER COLLECTION IN RAIN BARREL AND CISTERN
9	BRIDGE ROSE TO DECOMPOSTER FOR TO DEEP WATER TREES WITH
10	BRIDGE ROSE TO DECOMPOSTER FOR TO DEEP WATER TREES WITH
11	BRIDGE ROSE TO DECOMPOSTER FOR TO DEEP WATER TREES WITH
12	OVERFLOW DIRECTS STORMWATER TO RAIN GARDEN
13	RAIN GARDEN
14	RAIN GARDEN OVERFLOW TO STREET
15	MEDIUM WATER-USE PLANTING VARIETIES: RAIN GARDEN PLANTS, TURF
16	MEDIUM WATER-USE PLANTING VARIETIES: CALIFORNIA NATIVE, SOUTH
17	LOW WATER-USE PLANTING VARIETIES: CALIFORNIA NATIVE, SOUTH
18	LOW WATER-USE PLANTING VARIETIES: CALIFORNIA NATIVE, SOUTH
19	LOW WATER-USE PLANTING VARIETIES: CALIFORNIA NATIVE, SOUTH
20	NATIVE SHADE TREE: QUERCUS AGROCOLA, AEBULUS WILSONIA
21	NATIVE TREES: QUERCUS AGROCOLA, AEBULUS WILSONIA
22	SPACED REDUCED CONCRETE SIDEWALK (DESIGNED BY PROS)
23	PONIC TABLE
24	POSTS AND TENSION WIRE FOR OVERHANG SHADE BAIL, TYPICAL
25	POSTS AND TENSION WIRE FOR OVERHANG SHADE BAIL, TYPICAL
26	POSTS AND TENSION WIRE FOR OVERHANG SHADE BAIL, TYPICAL
27	POSTS AND TENSION WIRE FOR OVERHANG SHADE BAIL, TYPICAL
28	POSTS AND TENSION WIRE FOR OVERHANG SHADE BAIL, TYPICAL
29	POSTS AND TENSION WIRE FOR OVERHANG SHADE BAIL, TYPICAL
30	POSTS AND TENSION WIRE FOR OVERHANG SHADE BAIL, TYPICAL
31	POOL GARDEN/DRY DRAIN TO INFILTRATE TERRACE RAINOFF
32	PERFORATED PAVEMENT/STIFFING SPHERE DECOMPOSTATION (DESIGNED
33	PARTIAL SHADE GARDEN
34	LOG FOOTRESTING AREA
35	EXISTING UNDESIGNED WALKER SPACES TO REMAIN (CONCRETE,
36	INTERPRETIVE SIGNAGE PANEL, TYPICAL
37	CALIFORNIA WILDOVER MEADOW
38	CALIFORNIA NATIVE POLLINATOR AND HABITAT PLANTINGS
39	CALIFORNIA NATIVE POLLINATOR AND HABITAT PLANTINGS
40	SPACED REDUCED CONCRETE SIDEWALK (DESIGNED BY PROS)
41	COMPOST RETAINING WALL
42	RELOCATE SOME OF ALL EXISTING COBBLES FOR USE AS
43	RELOCATE SOME OF ALL EXISTING COBBLES FOR USE AS
44	RELOCATE SOME OF ALL EXISTING COBBLES FOR USE AS
45	RELOCATE SOME OF ALL EXISTING COBBLES FOR USE AS
46	NEW 48" WIDE CONCRETE WALK
47	NEW TRENCH DRAIN
48	12" WIDE LANDSCAPE TIMBERS AND DECOMPOSED GRANITE PATHWAY
49	12" WIDE LANDSCAPE TIMBERS AND DECOMPOSED GRANITE PATHWAY
50	LANDSCAPE TIMBERS WITH HANDRAIL
51	BENCH
52	TRENCH DRAIN INTO EXISTING STORM DRAIN TO STREET
53	INTERCEPT EXISTING STORM DRAIN AND DIVERT TO RAIN GARDEN
54	OVERFLOW TO SHALE
55	NEW ADA ACCESSIBLE RAMP AT CURB
56	WATER-USE PROS TYPICAL FOR DECOMPOSTATION OF RESIDUAL,
57	EXISTING CONCRETE SHALE
58	IF MARKET UMBRELLA WITH ANCHOR FOOTING
59	SHADE TREE, TYPICAL



1 NORTH PLANTING BEDS DETAIL PLAN
 CONCEPT A: "GAINING A CLEAR PERSPECTIVE ON REDUCING OUTDOOR WATER USE"



URBAN WATER GROUP

Drought Resilient Landscapes

746 S. LOS ANGELES STREET, SUITE 610
 LOS ANGELES, CA 90014
 424-367-1204 urbanwatergroup.com

Thomas W. Rau,
 Landscape Architect
 CA Lic. #5581

LAS VIRGENES MUNICIPAL WATER DISTRICT-TRIUNFO JPA
 PURE WATER DEMONSTRATION PROJECT
 4232 LAS VIRGENES ROAD
 CALABASAS, CA 91302-1994

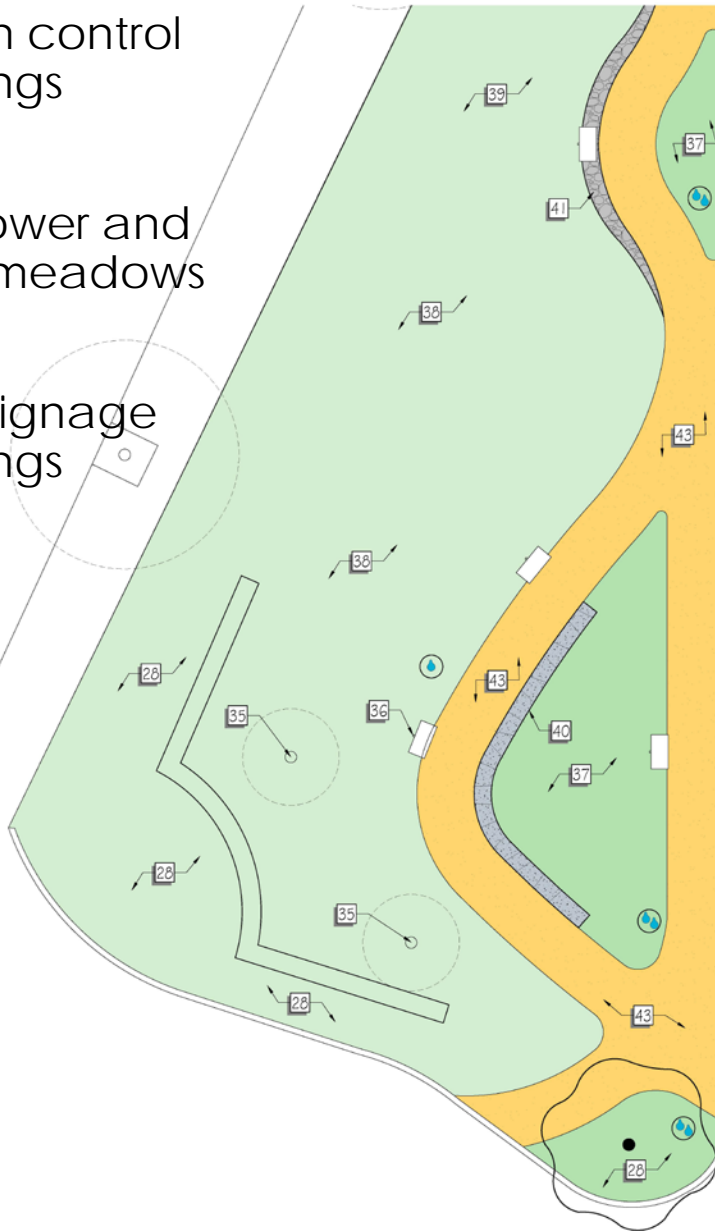
Date:	4/10/18
Version:	Final Schematic Design
Project Name:	
Client:	As Noted
Rev:	
1	
2	
3	
4	
5	

Sheet Title:
 CONCEPT A: NORTH
 PLANTING BEDS
 DETAIL PLAN,
 AMPHITHEATER SHADE
 ALTERNATIVE

Sheet Number:

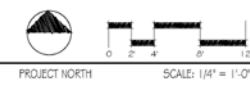
L-0.4

- Erosion control plantings
- Wildflower and grass meadows
- Entry signage plantings



LEGEND	
ITEM	NOTE, DESCRIPTION
1	SOFT GATE VALVE MOUNTED DOWNSTREAM OF THE TRENCH TO BE USED FOR VENTING THE VACUOUS SPACE OF WATER SAVINGS ADJUSTABLE IN THE SAMPLE GARDEN PLANTS
2	VISITOR ARRIVAL PLAZA FOR SELF OR DOCENT LED TOURS
3	LOW WATER USE TOFF ALTERNATIVES: CADEK, KURAFIA, DRONOKA, etc.
4	BOULDERS FOR SITTING
5	BIOWALL PANELS: COEFFICIENT OF PERMEABILITY, IMPORTANCE OF REDUCING OUTDOOR WATER CONSUMPTION, ETC.
6	BIOWALL GERM VARIETY TO EDVAIN
7	SOAKER ROSE TO DEMONSTRATE HOW TO DEEP WATER TREES WITH STEAM BATH DRAINAGE IN RAIN GARDEN AND CATCHING RAINWATER FOR PLANT IRRIGATION WATER SAVING SAMPLE GARDEN PLANT NUMBER OF DROPS RELATED TO WATERSAVING MEASUREMENT
8	BIOWALL DOWNCOURT TO BE PIPED TO DEMONSTRATION RAIN GARDEN AND SYSTEMS
10	SAMPLES OF RAIN BARRELS AND SYSTEMS
11	4" WIDE DECOMPOSED GRANITE PATHWAY
12	OVERFLOW DIRECTS STORMWATER TO RAIN GARDEN
13	RAIN GARDEN
14	RAIN GARDEN OVERFLOW TO STREET
15	MEDIUM WATER USE PLANTING VIGNETTES: RAIN GARDEN PLANTS, TOFF ALTERNATIVES, FLOWERING PERENNIALS
16	MEDIUM WATER USE PLANTING VIGNETTES: CALIFORNIA NATIVE, AUSTRALIAN, WESTERN WILDFLOWERS
17	LOW WATER USE PLANTING VIGNETTES: CALIFORNIA NATIVE, SOUTH AFRICAN BULBOUS
18	OVERFLOW TO RAIN GARDEN USE PLANTING VIGNETTES TO WATER SPHEN PERENNIALS, CALIFORNIA NATIVE AND BULBOUS PLANTS
19	THE WOODING TO CREATE GOOD USE AND PROVIDE VISUAL INTEREST, 2" CONCRETE STEPS, 3" SLOPE MAXIMUM, TYPICAL
20	NATIVE SHADE TREE: QUERCUS AGROPHILA, REDWOOD WALKER NATIVE PLANTING TREES: QUERCUS LANCEOLATA, LYCOPHILA, FERNBUSH AND ANACARDIUM
21	SPACED RECYCLED CONCRETE DEBRIS: RECYCLED TYPICAL PROVIDES SEATING SOL UP TO 30 PEOPLE FOR DOCENT LED TOURS
22	PONIC TABLE
24	POSTS AND TENSION WIRE FOR OVER-HEAD SHADE SAIL, TYPICAL
25	ROOZE AND THE WOODING: PERENNIALS AND TROPICAL PLANTS: LYCOPHILA, VERA, CALIFORNIA WOODS, etc.
26	SPECIMEN SUCCESSION TREES: ALICE - ORCULUS, ALICE DANBELL
27	FORMER LOW WATER USE PLANTING VIGNETTES: PERENNIAL, MOIST SHADE AND SMALL-MEDIUM SCALE TREES AND RECYCLATING WATER BARRELS
28	LOW WATER USE PLANTING VIGNETTES: COLORFUL AND FLOWERING
29	BIOWALL COMMUNICATIVE OAK
30	DRY BROADLEAF AND UNDEROFT PLANTING VIGNETTES: CALIFORNIA NATIVE
31	SOIL GARDEN FRENCH DRAIN TO INFILTRATE TERRACE RUNOFF
32	RECYCLED FURNITURE/BIOWALL STONE DEMONSTRATION: DEBRIS, RECYCLED FURNITURE, UNIT PAVERS, GRAVEL WITH BROWN COALS, D-2
33	PARTIAL SHADE GARDEN
34	LOG STOOL, SITTING AREA
35	BIOWALL RECYCLED CONCRETE DEBRIS TO REMAIN: LEANING WALL, BACHMANN, TO BE SUBSTITUTED
36	INTERPRETIVE SIGNAGE PANEL, TYPICAL
37	CALIFORNIA WILDFLOWER MEADOW
38	CALIFORNIA NATIVE POLYUNATOR AND HABITAT PLANTINGS
39	CALIFORNIA NATIVE SLOPE STABILIZATION PLANTINGS
40	SPACED RECYCLED CONCRETE DEBRIS: RECYCLED TYPICAL
41	CONCRETE RETAINING WALL
42	RELOCATE SOME OF ALL OF EXISTING OBSTACLES FOR RELEASE AS EXISTING WALL AND CONCRETE DEBRIS: RECYCLED TYPICAL
43	4" WIDE GRANITE PATHWAY WITH BROWN TILES FOR VISIBILITY AT SLOPED AREA
44	EXISTING DRAIN AND TRENCH TO REMAIN, TYPICAL
45	EXISTING BOULDERS, KEEP IN PLACE OR RELOCATE AS NEEDED
46	NEW 48" WIDE CONCRETE WALL
47	NEW TRENCH DRAIN
48	PATCH ASPHALT AT END OF DRIVEWAY AND PROVIDE CURB
49	3" WIDE LANDSCAPE TIMBERS AND DECOMPOSED GRANITE PATHWAY
50	LANDSCAPE TIMBER STEPS WITH HANDRAIL
51	BENCH
52	THE TRENCH DRAIN INTO EXISTING STORM DRAIN TO STREET
53	INTERCEPT EXISTING STORM DRAIN AND DIVERT TO RAIN GARDEN
54	OVERFLOW TO STREET
55	NEW ADA ACCESSIBLE BAMP AT CURB
56	WOODEN STEPS: TYPICAL FOR DEMONSTRATION OF REGISTRATION, MAINTENANCE, COMPOSTING, ETC.
57	EXISTING CONCRETE BRIDGE
58	3" MARKET UMBRELLA WITH ANCHOR FOOTING
59	SHADE TREE, TYPICAL

1 SLOPE FRONTAGE DETAIL PLAN
 CONCEPT A: "GAINING A CLEAR PERSPECTIVE ON REDUCING OUTDOOR WATER USE"



Rev			
▲			
▲			
▲			
▲			

Signage

- Interpretive Subjects:
 - ✓ Plant lists for each garden
 - ✓ How to install rain tanks
 - ✓ How to install permeable paving
 - ✓ The story of imported water
 - ✓ Announcements and community events





KEY	NOTE, DESCRIPTION
1	10' GATE VALVE MOUNTED ON BRACK AT THE CURB TO BE USED FOR
2	10' WIDE WALKWAY TO BE USED FOR
3	10' WIDE WALKWAY TO BE USED FOR
4	10' WIDE WALKWAY TO BE USED FOR
5	10' WIDE WALKWAY TO BE USED FOR
6	10' WIDE WALKWAY TO BE USED FOR
7	10' WIDE WALKWAY TO BE USED FOR
8	10' WIDE WALKWAY TO BE USED FOR
9	10' WIDE WALKWAY TO BE USED FOR
10	10' WIDE WALKWAY TO BE USED FOR
11	10' WIDE WALKWAY TO BE USED FOR
12	10' WIDE WALKWAY TO BE USED FOR
13	10' WIDE WALKWAY TO BE USED FOR
14	10' WIDE WALKWAY TO BE USED FOR
15	10' WIDE WALKWAY TO BE USED FOR
16	10' WIDE WALKWAY TO BE USED FOR
17	10' WIDE WALKWAY TO BE USED FOR
18	10' WIDE WALKWAY TO BE USED FOR
19	10' WIDE WALKWAY TO BE USED FOR
20	10' WIDE WALKWAY TO BE USED FOR
21	10' WIDE WALKWAY TO BE USED FOR
22	10' WIDE WALKWAY TO BE USED FOR
23	10' WIDE WALKWAY TO BE USED FOR
24	10' WIDE WALKWAY TO BE USED FOR
25	10' WIDE WALKWAY TO BE USED FOR
26	10' WIDE WALKWAY TO BE USED FOR
27	10' WIDE WALKWAY TO BE USED FOR
28	10' WIDE WALKWAY TO BE USED FOR
29	10' WIDE WALKWAY TO BE USED FOR
30	10' WIDE WALKWAY TO BE USED FOR
31	10' WIDE WALKWAY TO BE USED FOR
32	10' WIDE WALKWAY TO BE USED FOR
33	10' WIDE WALKWAY TO BE USED FOR
34	10' WIDE WALKWAY TO BE USED FOR
35	10' WIDE WALKWAY TO BE USED FOR
36	10' WIDE WALKWAY TO BE USED FOR
37	10' WIDE WALKWAY TO BE USED FOR
38	10' WIDE WALKWAY TO BE USED FOR
39	10' WIDE WALKWAY TO BE USED FOR
40	10' WIDE WALKWAY TO BE USED FOR
41	10' WIDE WALKWAY TO BE USED FOR
42	10' WIDE WALKWAY TO BE USED FOR
43	10' WIDE WALKWAY TO BE USED FOR
44	10' WIDE WALKWAY TO BE USED FOR
45	10' WIDE WALKWAY TO BE USED FOR
46	10' WIDE WALKWAY TO BE USED FOR
47	10' WIDE WALKWAY TO BE USED FOR
48	10' WIDE WALKWAY TO BE USED FOR
49	10' WIDE WALKWAY TO BE USED FOR
50	10' WIDE WALKWAY TO BE USED FOR
51	10' WIDE WALKWAY TO BE USED FOR
52	10' WIDE WALKWAY TO BE USED FOR
53	10' WIDE WALKWAY TO BE USED FOR
54	10' WIDE WALKWAY TO BE USED FOR
55	10' WIDE WALKWAY TO BE USED FOR

LEGEND	NOTE, DESCRIPTION
15	MEDIUM WATER-USE PLANTING VARIETIES: RAIN GARDEN PLANTS, TURF ALTERNATIVE, PLANTING FREEDOM
16	MEDIUM WATER-USE PLANTING VARIETIES: CALIFORNIA NATIVE, AESTHETIC, MEDITERRANEAN
17	LOW WATER-USE PLANTING VARIETIES: CALIFORNIA NATIVE, SOUTH CALIFORNIA CLIMATIC
18	LOW WATER-USE PLANTING VARIETIES: TO WATER WHEN REQUIRED CALIFORNIA NATIVE AND MEDITERRANEAN
19	LOW WATER-USE PLANTING VARIETIES: TO WATER WHEN REQUIRED CALIFORNIA NATIVE AND MEDITERRANEAN
20	NATIVE SHADE TREE: QUERCUS AGROBOLIA, ADBULUS NABEUA
21	WATER TOLERANT TREE: FICUS LYONSII, FICUS VULGARIS, FICUS RELIGIOSA, FICUS SPINOSA, FICUS SPINOSA, FICUS SPINOSA
22	SPACED REDUCED CONCRETE SET WALL, DRAINAGE BY FLOOR, FLOORING TO BE DONE UP TO 30 PEOPLE FOR COOKING/GRILLING
23	POSTS AND TENSION WIRE FOR OVERHEAD SHADE SAIL, TYPICAL
24	POSTS AND TENSION WIRE FOR OVERHEAD SHADE SAIL, TYPICAL
25	POSTS AND TENSION WIRE FOR OVERHEAD SHADE SAIL, TYPICAL
26	POSTS AND TENSION WIRE FOR OVERHEAD SHADE SAIL, TYPICAL
27	POSTS AND TENSION WIRE FOR OVERHEAD SHADE SAIL, TYPICAL
28	POSTS AND TENSION WIRE FOR OVERHEAD SHADE SAIL, TYPICAL
29	POSTS AND TENSION WIRE FOR OVERHEAD SHADE SAIL, TYPICAL
30	POSTS AND TENSION WIRE FOR OVERHEAD SHADE SAIL, TYPICAL
31	POSTS AND TENSION WIRE FOR OVERHEAD SHADE SAIL, TYPICAL
32	POSTS AND TENSION WIRE FOR OVERHEAD SHADE SAIL, TYPICAL
33	POSTS AND TENSION WIRE FOR OVERHEAD SHADE SAIL, TYPICAL
34	POSTS AND TENSION WIRE FOR OVERHEAD SHADE SAIL, TYPICAL
35	POSTS AND TENSION WIRE FOR OVERHEAD SHADE SAIL, TYPICAL
36	POSTS AND TENSION WIRE FOR OVERHEAD SHADE SAIL, TYPICAL
37	POSTS AND TENSION WIRE FOR OVERHEAD SHADE SAIL, TYPICAL
38	POSTS AND TENSION WIRE FOR OVERHEAD SHADE SAIL, TYPICAL
39	POSTS AND TENSION WIRE FOR OVERHEAD SHADE SAIL, TYPICAL
40	POSTS AND TENSION WIRE FOR OVERHEAD SHADE SAIL, TYPICAL
41	POSTS AND TENSION WIRE FOR OVERHEAD SHADE SAIL, TYPICAL
42	POSTS AND TENSION WIRE FOR OVERHEAD SHADE SAIL, TYPICAL
43	POSTS AND TENSION WIRE FOR OVERHEAD SHADE SAIL, TYPICAL
44	POSTS AND TENSION WIRE FOR OVERHEAD SHADE SAIL, TYPICAL
45	POSTS AND TENSION WIRE FOR OVERHEAD SHADE SAIL, TYPICAL
46	POSTS AND TENSION WIRE FOR OVERHEAD SHADE SAIL, TYPICAL
47	POSTS AND TENSION WIRE FOR OVERHEAD SHADE SAIL, TYPICAL
48	POSTS AND TENSION WIRE FOR OVERHEAD SHADE SAIL, TYPICAL
49	POSTS AND TENSION WIRE FOR OVERHEAD SHADE SAIL, TYPICAL
50	POSTS AND TENSION WIRE FOR OVERHEAD SHADE SAIL, TYPICAL
51	POSTS AND TENSION WIRE FOR OVERHEAD SHADE SAIL, TYPICAL
52	POSTS AND TENSION WIRE FOR OVERHEAD SHADE SAIL, TYPICAL
53	POSTS AND TENSION WIRE FOR OVERHEAD SHADE SAIL, TYPICAL
54	POSTS AND TENSION WIRE FOR OVERHEAD SHADE SAIL, TYPICAL
55	POSTS AND TENSION WIRE FOR OVERHEAD SHADE SAIL, TYPICAL

LEGEND	NOTE, DESCRIPTION
31	POOL GARDEN/DRY DRAIN TO INFILTRATE TERRACE RAJOFF
32	PERFORATED PAVEMENT/STAIRS/SPRINKLER/IRRIGATION/URBANE/PERFORATED PAVEMENT/STAIRS/SPRINKLER/IRRIGATION/URBANE
33	PARTIAL SHADE GARDEN
34	LOG FOOTING/STAIR AREA
35	EXISTING SPECIFIED VARIETY SPECIES TO REMAIN EXISTING/PERFORATED PAVEMENT/STAIRS/SPRINKLER/IRRIGATION/URBANE
36	MEDITERRANEAN GRASS PANE, TYPICAL
37	CALIFORNIA WOODLAND MEADOW
38	CALIFORNIA NATIVE POLLINATOR AND HABITAT PLANTINGS
39	CALIFORNIA NATIVE POLLINATOR AND HABITAT PLANTINGS
40	SPACED REDUCED CONCRETE SET WALL, DRAINAGE BY FLOOR, FLOORING TO BE DONE UP TO 30 PEOPLE FOR COOKING/GRILLING
41	COBBLE RETAINING WALL
42	RELOCATE SOME OF ALL OF EXISTING COBBLES FOR USE AS RETAINING WALL AND EXISTING COBBLE FORM CONCRETE
43	EXISTING COBBLES TO BE USED FOR STABILIZATION OF EXISTING COBBLES
44	EXISTING COBBLES TO BE USED FOR STABILIZATION OF EXISTING COBBLES
45	EXISTING COBBLES TO BE USED FOR STABILIZATION OF EXISTING COBBLES
46	EXISTING COBBLES TO BE USED FOR STABILIZATION OF EXISTING COBBLES
47	EXISTING COBBLES TO BE USED FOR STABILIZATION OF EXISTING COBBLES
48	EXISTING COBBLES TO BE USED FOR STABILIZATION OF EXISTING COBBLES
49	EXISTING COBBLES TO BE USED FOR STABILIZATION OF EXISTING COBBLES
50	EXISTING COBBLES TO BE USED FOR STABILIZATION OF EXISTING COBBLES
51	EXISTING COBBLES TO BE USED FOR STABILIZATION OF EXISTING COBBLES
52	EXISTING COBBLES TO BE USED FOR STABILIZATION OF EXISTING COBBLES
53	EXISTING COBBLES TO BE USED FOR STABILIZATION OF EXISTING COBBLES
54	EXISTING COBBLES TO BE USED FOR STABILIZATION OF EXISTING COBBLES
55	EXISTING COBBLES TO BE USED FOR STABILIZATION OF EXISTING COBBLES

1 SOUTH PLANTING BEDS DETAIL PLAN

SEE DETAIL 2 ON SHEET L-0.4 FOR UMBRELLAS AND SHADE TREE ALTERNATIVE



2 SOUTH PLANTING BEDS SECTION ELEVATION
CONCEPT A: "GAINING A CLEAR PERSPECTIVE ON REDUCING OUTDOOR WATER USE"

PROJECT NORTH SCALE: 1/4" = 1'-0"

URBAN WATER GROUP
Drought Resilient Landscapes
746 S. LOS ANGELES STREET, SUITE 610
LOS ANGELES, CA 90014
424-367-1204 urbanwatergroup.com

Thomas W. Rau,
Landscape Architect
CA Lic. #5581

LAS VIRGENES MUNICIPAL WATER DISTRICT-TRIUNFO JPA
PURE WATER DEMONSTRATION PROJECT
4232 LAS VIRGENES ROAD
CALABASAS, CA 91302-1994

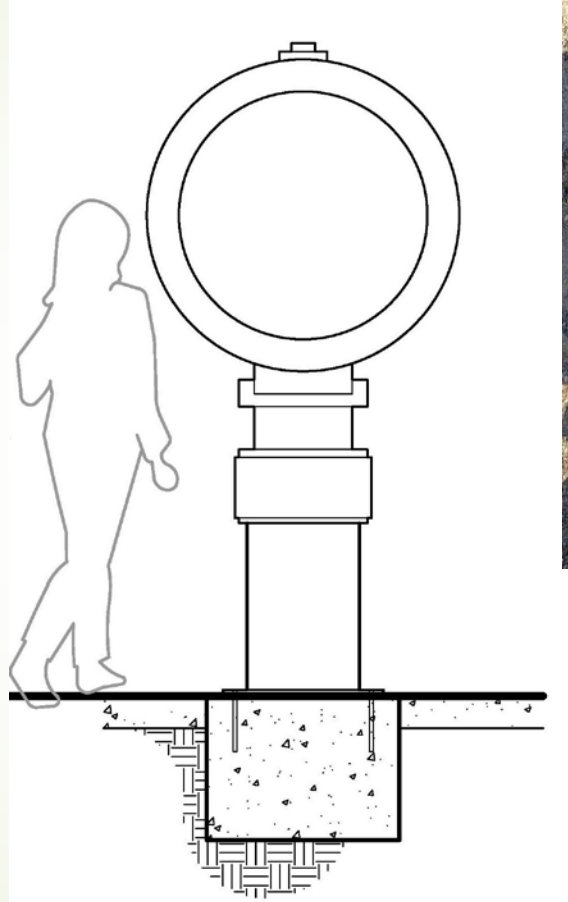
Date:	4/10/18
Version:	Final Schematic Design
Project Name:	
Client Name:	
Site:	
Scale:	
Author:	
Checker:	
Reviewer:	
Approver:	

Sheet Title:
CONCEPT A: SOUTH PLANTING BEDS SECTION ELEVATION AND DETAIL PLAN

Sheet Number:
L-0.2

30" Valve Artifact a.k.a. "The Lens"

- Signifies the extent of infrastructure need to import water
 - ✓ Tactile perspective
 - ✓ Sight through opening to see examples of medium, low and very gardens indicated by "drop" sign posts



30" Valve Artifact a.k.a. "The Lens"

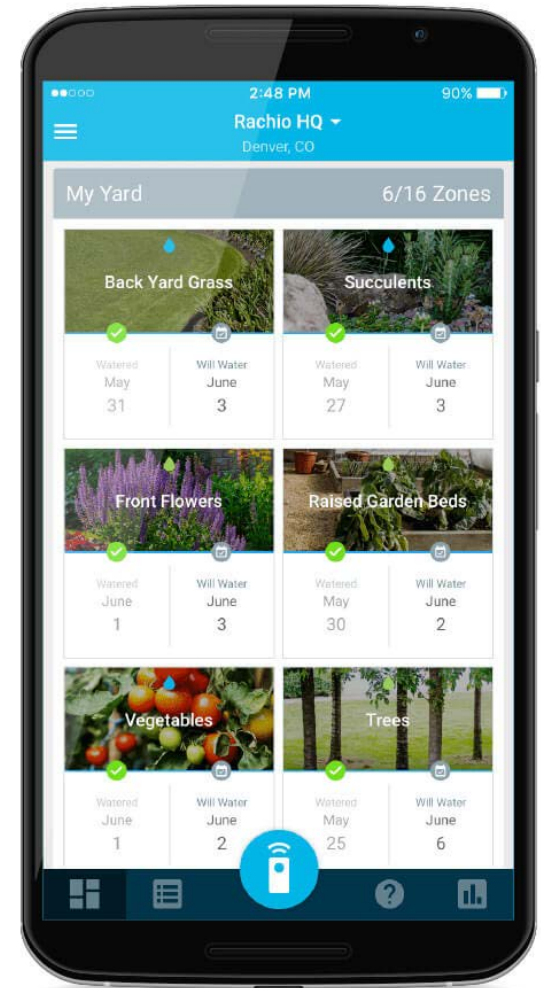


- ✓ Sight through opening to see examples of medium, low and very gardens indicated by "drop" sign posts

Water Management

“Smart” Controllers, aka
Weather-Based Irrigation Controller
(WBIC):

- ✓ Automatically adjusts watering schedule to **seasonal averages** or **real-time** weather data
- ✓ **Calculates watering schedules** based upon exposure, soil type, plant factor, slope, emitter flow rates, summer water reduction, establishment period etc.



Water Management

- Once established:
- ✓ Water only every few weeks
 - ✓ Reduce summer water
 - ✓ Many require no irrigation

URBAN WATER GROUP

Drought Resilient Landscapes

Questions?

